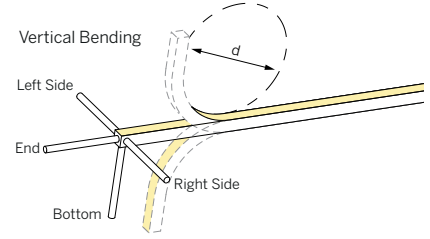
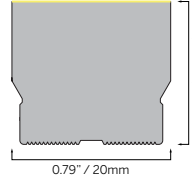


FLEX 20x18 VERTICAL BLACK

0.79x0.71"

- STATIC WHITE
- FREE CUT
- TUNABLE WHITE
- WARM DIM
- RGB/RGBW
- PIXEL



SPECIFICATION	
MATERIAL	Silicone
MOUNTING	Surface
IP RATING	IP67, IP20
BINNING	3 Step
LIFETIME (L70)	50,000hrs based on LM-80 & TM-21 applicable test data
DRIVER REQUIREMENT	24VDC Constant voltage
PROTECTION	UV, flame, salt and chlorine resistant
WARRANTY	5 Years

STATIC WHITE (CRI >90 Ra)

SPECIFICATION (MINIMUM BEND DIAMETER >9.8" / 300 mm)

- DRIVERS
- IES FILES

DRIVER OPTIONS (See driver page for details)	
D010 = eldoLED, 10%, 0-10V dimming, 120-277V	DALI-DT6 = eldoLED DALI (DT6), 0.1% dimming, 120-277V
EL96 = eldoLED 24V, 0.1% 0-10V dimming, 120-277V	UNV96-WL = 0-10V / Phase Dim 96W Wet Location, 1% dimming, 120-277V
DPH = Phase Dimming, 1% dimming, 120V only	
L3D0E = Lutron Hi-lume Premier 0.1% EcoSystem, 120-277V	UNV384-WL = 0-10V / Phase Dim 384W Wet Location, 1% dimming, 120-277V

Cut Interval	DELIVERED LUMENS lm/ft						
	1800K	2400K	2700K	3000K	3500K	4000K	6000K
S05 50 mm (2")	4	5	5	6	6	6	6
S12 50 mm (2")	9	12	12	13	13	14	14

ORDERING INFORMATION									
MODEL	JACKET	CCT	LED TYPE	CABLE ENTRY	IP RATING	CABLE LENGTH	LENGTH	DRIVERS	
63S2018V Flex 20x18 Vertical	2 Black	C18 1800K	S05 5 W/m (15m max.)	E End	7 IP67	003 0.3m (1ft)	.XXXX Length in inches	D010 EL96 DPH L3D0E DALI-DT6 UNV96-WL UNV384-WL	
		C24 2400K	1.5 W/ft (49.2ft max.)	B Bottom	2 IP20	010 1m (3.3ft)			
		C27 2700K	S12 12 W/m (6m max.)	SL Side Left		030 3m (9.8ft)			
		C30 3000K	3.7 W/ft (19.7ft max.)	SR Side Right		050 5m (16.4ft)			
		C35 3500K				100 10m (32.8ft)			
		C40 4000K							
C60 6000K									
63S2018V	2								

STATIC WHITE - HIGH OUTPUT (CRI >90 Ra)

SPECIFICATION (MINIMUM BEND DIAMETER >9.8" / 300 mm)

- DRIVERS

DRIVER OPTIONS (See driver page for details)	
D010 = eldoLED, 10%, 0-10V dimming, 120-277V	DALI-DT6 = eldoLED DALI (DT6), 0.1% dimming, 120-277V
EL96 = eldoLED 24V, 0.1% 0-10V dimming, 120-277V	UNV96-WL = 0-10V / Phase Dim 96W Wet Location, 1% dimming, 120-277V
DPH = Phase Dimming, 1% dimming, 120V only	
L3D0E = Lutron Hi-lume Premier 0.1% EcoSystem, 120-277V	UNV384-WL = 0-10V / Phase Dim 384W Wet Location, 1% dimming, 120-277V

Cut Interval	DELIVERED LUMENS lm/ft						
	1800K	2400K	2700K	3000K	3500K	4000K	6000K
S13 62.5 mm (2.5")	15	20	21	23	24	23	24

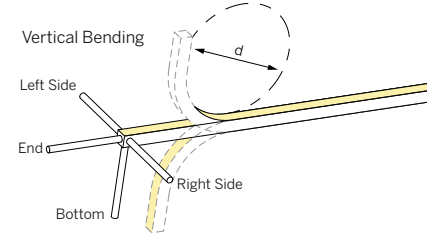
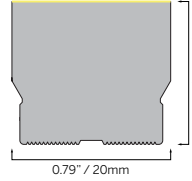
ORDERING INFORMATION									
MODEL	JACKET	CCT	LED TYPE	CABLE ENTRY	IP RATING	CABLE LENGTH	LENGTH	DRIVERS	
63S2018HOV Flex 20x18 Vertical High Output	2 Black	C18 1800K	S13 13.5 W/m (5m max.)	E End	7 IP67	003 0.3m (1ft)	.XXXX Length in inches	D010 EL96 DPH L3D0E DALI-DT6 UNV96-WL UNV384-WL	
		C24 2400K	4.1 W/ft (16.4ft max.)	B Bottom	2 IP20	010 1m (3.3ft)			
		C27 2700K		SL Side Left		030 3m (9.8ft)			
		C30 3000K		SR Side Right		050 5m (16.4ft)			
		C35 3500K				100 10m (32.8ft)			
		C40 4000K							
C60 6000K									
63S2018HOV	2		S13						

FLEX 20x18 VERTICAL BLACK

0.79x0.71"



- STATIC WHITE
- FREE CUT
- TUNABLE WHITE
- WARM DIM
- RGB / RGBW
- PIXEL



SPECIFICATION	
MATERIAL	Silicone
MOUNTING	Surface
IP RATING	IP67, IP20
BINNING	3 Step
LIFETIME (L70)	50,000hrs based on LM-80 & TM-21 applicable test data
DRIVER REQUIREMENT	24VDC Constant voltage
PROTECTION	UV, flame, salt and chlorine resistant
WARRANTY	5 Years

STATIC WHITE FREE CUT (CRI >90 Ra)

SPECIFICATION (MINIMUM BEND DIAMETER >9.8" / 300 mm)

- DRIVERS
- IES FILES

DRIVER OPTIONS (See driver page for details)	
D010 = eldoLED, 10%, 0-10V dimming, 120-277V	DALI-DT6 = eldoLED DALI (DT6), 0.1% dimming, 120-277V
EL96 = eldoLED 24V, 0.1% 0-10V dimming, 120-277V	UNV96-WL = 0-10V / Phase Dim 96W Wet Location, 1% dimming, 120-277V
DPH = Phase Dimming, 1% dimming, 120V only	
L3D0E = Lutron Hi-lume Premier 0.1% EcoSystem, 120-277V	UNV384-WL = 0-10V / Phase Dim 384W Wet Location, 1% dimming, 120-277V

Cut Interval	DELIVERED LUMENS lm/ft						
	1800K	2400K	2700K	3000K	3500K	4000K	6000K
SF05 Free Cut	4	4	5	5	5	5	5
SF12 Free Cut	7	10	12	12	12	13	12

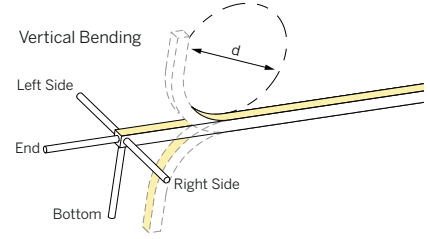
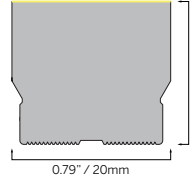
- ACCESSORIES

ORDERING INFORMATION									
MODEL	JACKET	CCT	LED TYPE	CABLE ENTRY	IP RATING	CABLE LENGTH	LENGTH	DRIVERS	
63S2018V Flex 20x18 Vertical	2 Black	C18 1800K	SF05 5 W/m (12.5m max.)	E End B Bottom SL Side Left SR Side Right	7 IP67 2 IP20	003 0.3m (1ft)	.XXXX Length in inches	D010 EL96 DPH L3D0E DALI-DT6 UNV96-WL UNV384-WL	
		C24 2400K	1.5 W/ft (41ft max.)			010 1m (3.3ft)			
		C27 2700K	SF12 12 W/m (6m max.)			030 3m (9.8ft)			
		C30 3000K	3.7 W/ft (19.7ft max.)			050 5m (16.4ft)			
		C35 3500K				100 10m (32.8ft)			
		C40 4000K							
C60 6000K									
63S2018V	2								

FLEX 20x18 VERTICAL BLACK

0.79x0.71"

- STATIC WHITE
- FREE CUT
- TUNABLE WHITE
- WARM DIM
- RGB / RGBW
- PIXEL



SPECIFICATION	
MATERIAL	Silicone
MOUNTING	Surface
IP RATING	IP67, IP20
BINNING	3 Step
LIFETIME (L70)	50,000hrs based on LM-80 & TM-21 applicable test data
DRIVER REQUIREMENT	24VDC Constant voltage
PROTECTION	UV, flame, salt and chlorine resistant
WARRANTY	5 Years

TUNABLE WHITE (CRI >90 Ra)

SPECIFICATION (MINIMUM BEND DIAMETER >9.8" / 300 mm)

DRIVER OPTIONS (See driver page for details)	
DALI-DT6 = eldoLED DALI (DT6), 0.1% dimming, 120-277V	
DALI-DT8 = eldoLED DALI (DT8), 0.1% dimming, 120-277V	

	Cut Interval	DELIVERED LUMENS lm/ft							
		1800K	2400K	2700K	3000K	3500K	4000K	6000K	
CT10	62.5 mm (2.5")	7	9	10	10	10	11	11	

- DRIVERS
- IES FILES

ORDERING INFORMATION									
MODEL	JACKET	CCT (LOW)	CCT (HIGH)	LED TYPE*	CABLE ENTRY	IP RATING	CABLE LENGTH	LENGTH	DRIVERS
63S2018V Flex 20x18 Vertical	2 Black	C18 1800K	24 2400K	CT10 2x9.6 W/m (7m max.) 2x2.9 W/ft (23ft max.) * Rated wattage is maximum wattage per channel. Combined power must also not exceed this value.	E End B Bottom SL Side Left SR Side Right	7 IP67 2 IP20	003 0.3m (1ft)	.XXXX Length in inches	DALI-DT6 DALI-DT8
		C24 2400K	27 2700K				010 1m (3.3ft)		
		C27 2700K	30 3000K				030 3m (9.8ft)		
		C30 3000K	35 3500K				050 5m (16.4ft)		
		C35 3500K	40 4000K				100 10m (32.8ft)		
63S2018V	2			CT10					

TUNABLE WHITE - HIGH OUTPUT (CRI >90 Ra)

SPECIFICATION (MINIMUM BEND DIAMETER >9.8" / 300 mm)

DRIVER OPTIONS (See driver page for details)	
DALI-DT6 = eldoLED DALI (DT6), 0.1% dimming, 120-277V	
DALI-DT8 = eldoLED DALI (DT8), 0.1% dimming, 120-277V	

	Cut Interval	DELIVERED LUMENS lm/ft							
		1800K	2400K	2700K	3000K	3500K	4000K	6000K	
CT10	83.3mm (3.3")	10	15	16	16	17	17	18	
CT13	83.3mm (3.3")	13	19	21	22	22	22	23	

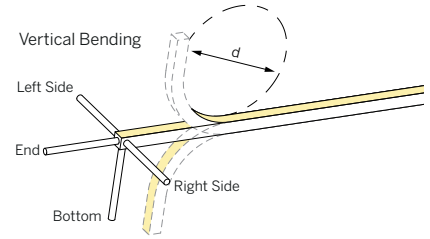
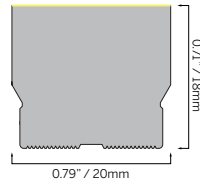
ORDERING INFORMATION									
MODEL	JACKET	CCT (LOW)	CCT (HIGH)	LED TYPE*	CABLE ENTRY	IP RATING	CABLE LENGTH	LENGTH	DRIVERS
63S2018HOV Flex 20x18 Vertical High Output	2 Black	C18 1800K	24 2400K	CT10 2x10 W/m (4m max.) 2x3 W/ft (13.1ft max.) CT13 2x13 W/m (3m max.) 2x4 W/ft (9.8ft max.) * Rated wattage is maximum wattage per channel. Combined power must also not exceed this value.	E End B Bottom SL Side Left SR Side Right	7 IP67 2 IP20	003 0.3m (1ft)	.XXXX Length in inches	DALI-DT6 DALI-DT8
		C24 2400K	27 2700K				010 1m (3.3ft)		
		C27 2700K	30 3000K				030 3m (9.8ft)		
		C30 3000K	35 3500K				050 5m (16.4ft)		
		C35 3500K	40 4000K				100 10m (32.8ft)		
63S2018HOV	2								

FLEX 20x18 VERTICAL BLACK

0.79x0.71"



- STATIC WHITE
- FREE CUT
- TUNABLE WHITE
- WARM DIM
- RGB / RGBW
- PIXEL



SPECIFICATION	
MATERIAL	Silicone
MOUNTING	Surface
IP RATING	IP67, IP20
BINNING	3 Step
LIFETIME (L70)	50,000hrs based on LM-80 & TM-21 applicable test data
DRIVER REQUIREMENT	24VDC Constant voltage
PROTECTION	UV, flame, salt and chlorine resistant
WARRANTY	5 Years

WARM DIM (CRI >90 Ra)

SPECIFICATION (MINIMUM BEND DIAMETER >9.8" / 300 mm)

- DRIVERS

DRIVER OPTIONS (See driver page for details)
 MAGSDM96-WD = 0-10V / Phase Dim 96W, 0.1% CCR Dimming for Warm Dim, 120-277V (Phase - 120V only)

	Cut Interval	DELIVERED LUMENS lm/ft	
		2700K	3000K
14R	83.33 mm (3.3")	10	12

- IES FILES

ORDERING INFORMATION									
MODEL	JACKET	CCT	LED TYPE	CABLE ENTRY	IP RATING	CABLE LENGTH	LENGTH	DRIVERS	
63S2018V Flex 20x18 Vertical	2 Black	C2718W 2700-1800K	14R 14 W/m (5m max.) 4.3 W/ft (16.4ft max.)	E End	7 IP67	003 0.3m (1ft)	.XXXX Length in inches	MAGSDM96-WD	
		C3018W 3000-1800K		B Bottom	2 IP20	010 1m (3.3ft)			
				SL Side Left		030 3m (9.8ft)			
				SR Side Right		050 5m (16.4ft)			
						100 10m (32.8ft)			
63S2018V	2		14R					MAGSDM96-WD	

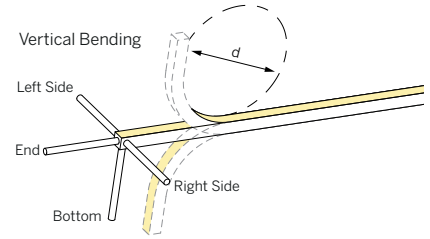
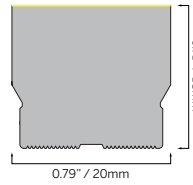
- ACCESSORIES

FLEX 20x18 VERTICAL BLACK

0.79x0.71"



- STATIC WHITE
- FREE CUT
- TUNABLE WHITE
- WARM DIM
- RGB / RGBW
- PIXEL



SPECIFICATION	
MATERIAL	Silicone
MOUNTING	Surface
IP RATING	IP67, IP20
BINNING	3 Step
LIFETIME (L70)	50,000hrs based on LM-80 & TM-21 applicable test data
DRIVER REQUIREMENT	24VDC Constant voltage
PROTECTION	UV, flame, salt and chlorine resistant
WARRANTY	5 Years

RGB

SPECIFICATION (MINIMUM BEND DIAMETER >11.8" / 300 mm)

- DRIVERS

DRIVER OPTIONS (See driver page for details)
DMX = eldoLED, 24V, 0.1% DMX Dimming

	Cut Interval	DELIVERED LUMENS lm/ft		
		RED	GREEN	BLUE
L12	100 mm (3.9")	2	4	1

- IES FILES
- ACCESSORIES

ORDERING INFORMATION									
MODEL	JACKET	CCT	LED TYPE	CABLE ENTRY	IP RATING	CABLE LENGTH	LENGTH	DRIVERS	
63S2018V Flex 20x18 Vertical	2 Black	RGB RGB	L12 12 W/m (5m max.) 3.7 W/ft (16.4ft max.)	E End B Bottom SL Side Left SR Side Right	7 IP67 2 IP20	003 0.3m (1ft) 010 1m (3.3ft) 030 3m (9.8ft) 050 5m (16.4ft) 100 10m (32.8ft)	.XXXX Length in inches	DMX	
63S2018V	2	RGB	L12					DMX	

RGBW

SPECIFICATION (MINIMUM BEND DIAMETER >11.8" / 300 mm)

- DRIVERS

DRIVER OPTIONS (See driver page for details)
DMX = eldoLED, 24V, 0.1% DMX Dimming

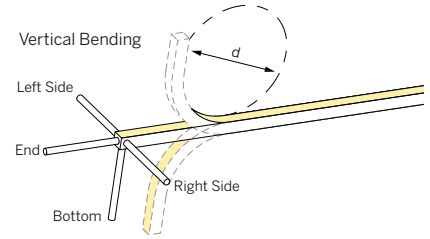
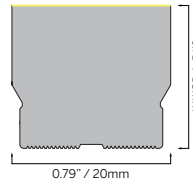
	Cut Interval	DELIVERED LUMENS lm/ft					
		RED	GREEN	BLUE	2700K	3000K	4000K
L16	100 mm (3.9")	2	4	1	4	5	5

ORDERING INFORMATION									
MODEL	JACKET	CCT	LED TYPE	CABLE ENTRY	IP RATING	CABLE LENGTH	LENGTH	DRIVERS	
63S2018V Flex 20x18 Vertical	2 Black	RGBW27 RGBW(2700K) RGBW30 RGBW(3000K) RGBW40 RGBW(4000K)	L16 16 W/m (5m max.) 4.9 W/ft (16.4ft max.)	E End B Bottom SL Side Left SR Side Right	7 IP67 2 IP20	003 0.3m (1ft) 010 1m (3.3ft) 030 3m (9.8ft) 050 5m (16.4ft) 100 10m (32.8ft)	.XXXX Length in inches	DMX	
63S2018V	2		L16					DMX	

FLEX 20x18 VERTICAL BLACK

0.79x0.71"

- STATIC WHITE
- FREE CUT
- TUNABLE WHITE
- WARM DIM
- RGB / RGBW
- PIXEL



SPECIFICATION	
MATERIAL	Silicone
MOUNTING	Surface
IP RATING	IP67, IP20
BINNING	3 Step
LIFETIME (L70)	50,000hrs based on LM-80 & TM-21 applicable test data
DRIVER REQUIREMENT	24VDC Constant voltage
PROTECTION	UV, flame, salt and chlorine resistant
WARRANTY	5 Years

PIXEL - STATIC WHITE (CRI >90 Ra)

SPECIFICATION (MINIMUM BEND DIAMETER >11.8" / 300 mm)

DRIVERS	DRIVER OPTIONS (See driver page for details)	DELIVERED LUMENS lm/ft										
		Pixels	DMX Addresses	Cut Interval	1800K	2400K	2700K	3000K	3500K	4000K	6000K	
	DMX = eldoLED, 24V, 0.1% DMX Dimming	DMX10P13	10 /m (3.94")	10 /m (1 /px)	100 mm (3.9")	52	68	74	80	82	84	83

ORDERING INFORMATION										
MODEL	JACKET	CCT	CCT	LED TYPE	CABLE ENTRY	IP RATING	CABLE LENGTH	LENGTH	DRIVERS	
63S2018V Flex 20x18 Vertical	2 Black	C18 1800K	DMX10P13 13.5 W/m (5m max.)	E End B Bottom SL Side Left SR Side Right	7 IP67 2 IP20	003 0.3m (1ft) 010 1m (3.3ft) 030 3m (9.8ft) 050 5m (16.4ft) 100 10m (32.8ft)	.XXXX Length in inches	DMX		
		C24 2400K	4.1 W/ft (16.4ft max.)							
		C27 2700K								
		C30 3000K								
		C35 3500K								
		C40 4000K								
C60 6000K										
63S2018V	2			DMX10P13					DMX	

PIXEL - TUNABLE WHITE (CRI >90 Ra)

SPECIFICATION (MINIMUM BEND DIAMETER >11.8" / 300 mm)

DRIVERS	DRIVER OPTIONS (See driver page for details)	DELIVERED LUMENS lm/ft										
		Pixels	DMX Addresses	Cut Interval	1800K	2400K	2700K	3000K	3500K	4000K	6000K	
	DMX = eldoLED, 24V, 0.1% DMX Dimming	CTDMX10P13	10 /m (3.94")	20 /m (2 /px)	100 mm (3.9")	4	6	6	7	7	7	7

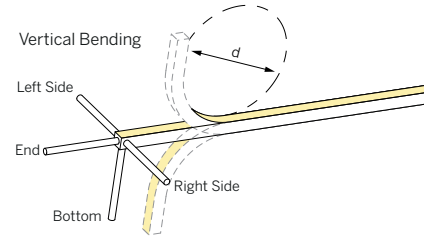
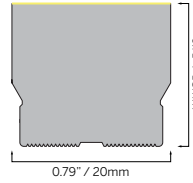
ORDERING INFORMATION											
MODEL	JACKET	CCT	CCT	LED TYPE	CABLE ENTRY	IP RATING	CABLE LENGTH	LENGTH	DRIVERS		
63S2018V Flex 20x18 Vertical	2 Black	C18 1800K	24 2400K	CTDMX10P13 13.5 W/m (5m max.)	E End B Bottom SL Side Left SR Side Right	7 IP67 2 IP20	003 0.3m (1ft) 010 1m (3.3ft) 030 3m (9.8ft) 050 5m (16.4ft) 100 10m (32.8ft)	.XXXX Length in inches	DMX		
		C24 2400K	27 2700K								
		C27 2700K	30 3000K								
		C30 3000K	35 3500K								
		C35 3500K	40 4000K								
		C40 4000K	60 6000K								
63S2018V	2			CTDMX10P13					DMX		

FLEX 20x18 VERTICAL BLACK

0.79x0.71"



- STATIC WHITE
- FREE CUT
- TUNABLE WHITE
- WARM DIM
- RGB / RGBW
- PIXEL



SPECIFICATION	
MATERIAL	Silicone
MOUNTING	Surface
IP RATING	IP67, IP20
BINNING	3 Step
LIFETIME (L70)	50,000hrs based on LM-80 & TM-21 applicable test data
DRIVER REQUIREMENT	24VDC Constant voltage
PROTECTION	UV, flame, salt and chlorine resistant
WARRANTY	5 Years

PIXEL - RGB

SPECIFICATION (MINIMUM BEND DIAMETER >11.8" / 300 mm)

DRIVER OPTIONS (See driver page for details)
DMX = eldoLED, 24V, 0.1% DMX Dimming

	Pixels	DMX Addresses	Cut Interval	DELIVERED LUMENS lm/ft		
				RED	GREEN	BLUE
DMX02P14	2 /m (19.7")	6 /m (3 /px)	500 mm (19.7")	1	4	1
DMX10P14	10 /m (3.94")	30 /m (3 /px)	100 mm (3.9")	1	4	1

- DRIVERS
- IES FILES
- ACCESSORIES

ORDERING INFORMATION									
MODEL	JACKET	CCT	LED TYPE	CABLE ENTRY	IP RATING	CABLE LENGTH	LENGTH	DRIVERS	
63S2018V Flex 20x18 Vertical	2 Black	RGB	RGB	DMX02P14 14 W/m (5m max.) 4.3 W/ft (16.4ft max.)	E End	7 IP67	003 0.3m (1ft)	.XXXX Length in inches	DMX
				DMX10P14 14 W/m (5m max.) 4.3 W/ft (16.4ft max.)	B Bottom	2 IP20	010 1m (3.3ft)		
					SL Side Left		030 3m (9.8ft)		
					SR Side Right		050 5m (16.4ft)		
							100 10m (32.8ft)		
63S2018V	2	RGB						DMX	

PIXEL - RGBW

SPECIFICATION (MINIMUM BEND DIAMETER >11.8" / 300 mm)

DRIVER OPTIONS (See driver page for details)
DMX = eldoLED, 24V, 0.1% DMX Dimming

	Pixels	DMX Addresses	Cut Interval	DELIVERED LUMENS lm/ft					
				RED	GREEN	BLUE	2700K	3000K	4000K
DMX10P16	10 /m (3.94")	40 /m (4 /px)	100 mm (3.9")	1	2	1	2	2	2

ORDERING INFORMATION									
MODEL	JACKET	CCT	LED TYPE	CABLE ENTRY	IP RATING	CABLE LENGTH	LENGTH	DRIVERS	
63S2018V Flex 20x18 Vertical	2 Black	RGBW27 RGBW(2700K) RGBW30 RGBW(3000K) RGBW40 RGBW(4000K)	DMX10P16 16 W/m (5m max.) 4.9 W/ft (16.4ft max.)	E End	7 IP67	003 0.3m (1ft)	.XXXX Length in inches	DMX	
				B Bottom	2 IP20	010 1m (3.3ft)			
				SL Side Left		030 3m (9.8ft)			
				SR Side Right		050 5m (16.4ft)			
						100 10m (32.8ft)			
63S2018V	2		DMX10P16					DMX	



FLEX 20x18 VERTICAL BLACK

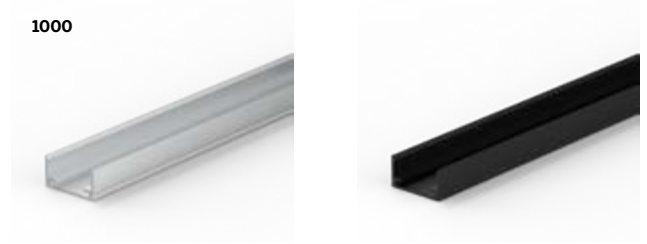
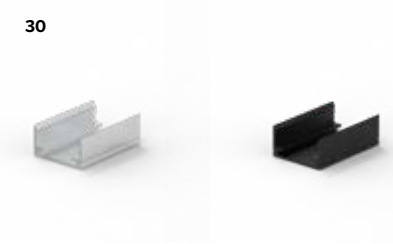
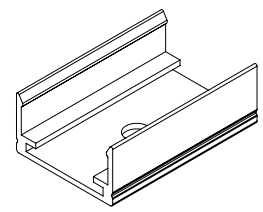
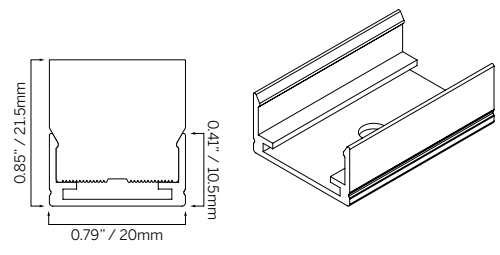
0.79x0.71"

- STATIC WHITE
- FREE CUT
- TUNABLE WHITE
- WARM DIM
- RGB / RGBW
- PIXEL
- DRIVERS
- IES FILES

ACCESSORIES

TYPE Aluminum profile
MOUNTING Surface mount

ORDERING INFORMATION		
MODEL	FINISH	LENGTH
63S2018X	5AP Silver	0030 30mm (1.18")
	2AP Black	1000 1000mm (39.37")
63S2018X		



TYPE Stainless bendable profile
MOUNTING Surface mount

ORDERING INFORMATION		
MODEL	FINISH	LENGTH
63S2018X	5SC Silver	1000 1000mm (39.37")
	2SC Black	
63S2018X		1000

