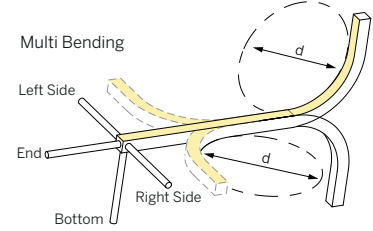
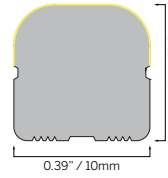
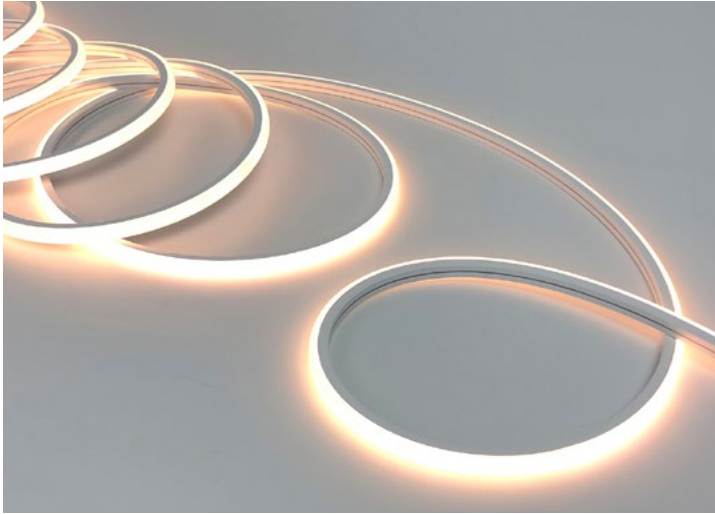


FLEX 10X10 MULTI DOMED

0.39x0.39"

STATIC WHITE



SPECIFICATION	
MATERIAL	Silicone
MOUNTING	Surface
IP RATING	IP67, IP20
BINNING	3 Step
LIFETIME (L70)	50,000hrs based on LM-80 & TM-21 applicable test data
DRIVER REQUIREMENT	24VDC Constant voltage
PROTECTION	UV, flame, salt and chlorine resistant
WARRANTY	5 Years

DRIVERS STATIC WHITE (CRI >90 Ra)

SPECIFICATION (MINIMUM BEND DIAMETER >7.9" / 200 mm)

DRIVER OPTIONS (See driver page for details)	
D010 = eldoLED, 10%, 0-10V dimming, 120-277V	DALI-DT6 = eldoLED DALI (DT6), 0.1% dimming, 120-277V
EL96 = eldoLED 24V, 0.1% 0-10V dimming, 120-277V	UNV96-WL = 0-10V / Phase Dim 96W Wet Location, 1% dimming, 120-277V
DPH = Phase Dimming, 1% dimming, 120V only	
L3D0E = Lutron Hi-lume Premier 0.1% EcoSystem, 120-277V	UNV384-WL = 0-10V / Phase Dim 384W Wet Location, 1% dimming, 120-277V

Cut Interval	DELIVERED LUMENS lm/ft							
	1800K	2400K	2700K	3000K	3500K	4000K	6000K	
S05 55.56 mm (2.2")	102	134	146	157	161	165	163	
S10 55.56 mm (2.2")	205	268	293	316	322	331	327	

ORDERING INFORMATION									
MODEL	JACKET	CCT	LED TYPE	CABLE ENTRY	IP RATING	CABLE LENGTH	LENGTH	DRIVERS	
63S1010MD Flex 10x10 Multi Domed	1 White	C18 1800K	S05 5 W/m (6m max.) 1.5 W/ft (19.7ft max.) S10 10 W/m (4m max.) 3 W/ft (13.1ft max.)	E End B Bottom SL Side Left SR Side Right	7 IP67 2 IP20	003 0.3m (1ft)	.XXXX Length in inches	D010 EL96 DPH L3D0E DALI-DT6 UNV96-WL UNV384-WL	
		C24 2400K				010 1m (3.3ft)			
		C27 2700K				030 3m (9.8ft)			
		C30 3000K				050 5m (16.4ft)			
		C35 3500K				100 10m (32.8ft)			
		C40 4000K							
C60 6000K									
63S1010MD	1								

STATIC WHITE - HIGH OUTPUT (CRI >90 Ra)

SPECIFICATION (MINIMUM BEND DIAMETER >7.9" / 200 mm)

DRIVER OPTIONS (See driver page for details)	
D010 = eldoLED, 10%, 0-10V dimming, 120-277V	DALI-DT6 = eldoLED DALI (DT6), 0.1% dimming, 120-277V
EL96 = eldoLED 24V, 0.1% 0-10V dimming, 120-277V	UNV96-WL = 0-10V / Phase Dim 96W Wet Location, 1% dimming, 120-277V
DPH = Phase Dimming, 1% dimming, 120V only	
L3D0E = Lutron Hi-lume Premier 0.1% EcoSystem, 120-277V	UNV384-WL = 0-10V / Phase Dim 384W Wet Location, 1% dimming, 120-277V

Cut Interval	DELIVERED LUMENS lm/ft							
	1800K	2400K	2700K	3000K	3500K	4000K	6000K	
S10 55.56 mm (2.2")	234	307	335	361	368	379	373	

ORDERING INFORMATION									
MODEL	JACKET	CCT	LED TYPE	CABLE ENTRY	IP RATING	CABLE LENGTH	LENGTH	DRIVERS	
63S1010HOMD Flex 10x10 Multi Domed High Output	1 White	C18 1800K	S10 10 W/m (4m max.) 3 W/ft (13.1ft max.)	E End B Bottom SL Side Left SR Side Right	7 IP67 2 IP20	003 0.3m (1ft)	.XXXX Length in inches	D010 EL96 DPH L3D0E DALI-DT6 UNV96-WL UNV384-WL	
		C24 2400K				010 1m (3.3ft)			
		C27 2700K				030 3m (9.8ft)			
		C30 3000K				050 5m (16.4ft)			
		C35 3500K				100 10m (32.8ft)			
		C40 4000K							
C60 6000K									
63S1010HOMD	1		S10						

FLEX 10X10 MULTI DOMED

0.39x0.39"

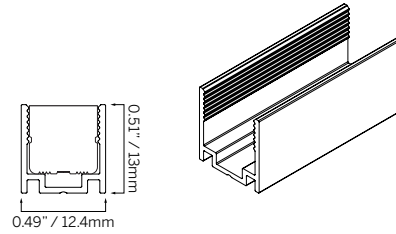
ACCESSORIES

STATIC
WHITE

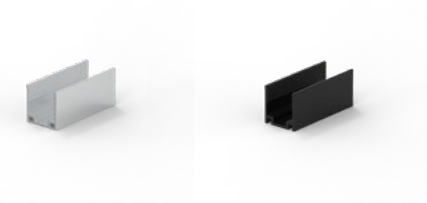
TYPE Aluminum profile
MOUNTING Surface mount

ORDERING INFORMATION

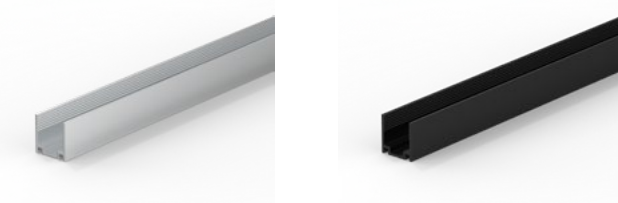
MODEL	FINISH	LENGTH
63S1010X	5AP Silver	0030 30mm (1.18")
	2AP Black	1000 1000mm (39.37")
		2000 2000mm (78.74")
63S1010X		



30



1000/2000



DRIVERS

IES
FILES

TYPE Stainless Mounting Clip
MOUNTING Surface mount

ORDERING INFORMATION

MODEL	FINISH	LENGTH
63S1010X	5SC Silver	0030 30mm (1.18")
	2SC Black	
63S1010X		0030



ACCESSORIES

TYPE Stainless Bendable Profile
MOUNTING Surface mount

ORDERING INFORMATION

MODEL	FINISH	LENGTH
63S1010X	5SC Silver	1000 1000mm (39.37")
	2SC Black	
63S1010X		1000

