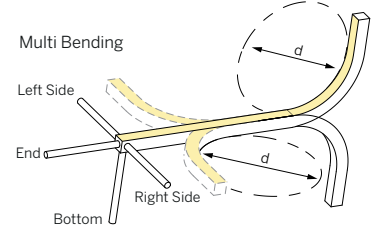
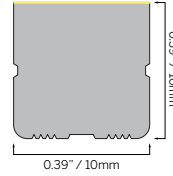
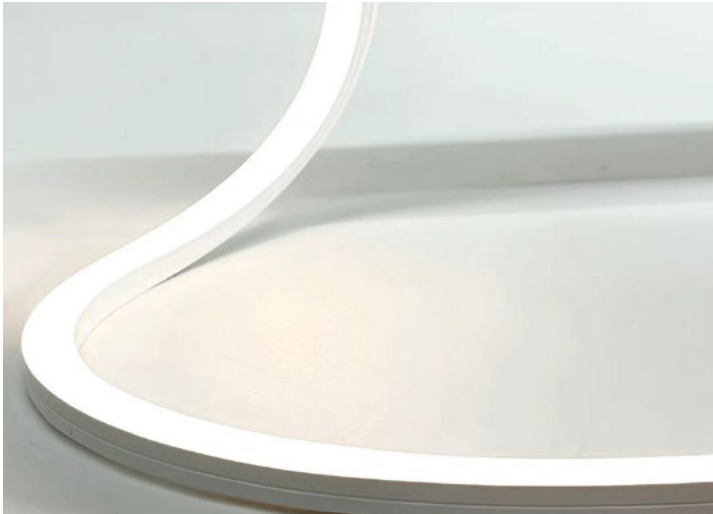


# FLEX 10X10 MULTI

0.39x0.39"

STATIC WHITE



SPECIFICATION	
MATERIAL	Silicone
MOUNTING	Surface
IP RATING	IP67, IP20
BINNING	3 Step
LIFETIME (L70)	50,000hrs based on LM-80 & TM-21 applicable test data
DRIVER REQUIREMENT	24VDC Constant voltage
PROTECTION	UV, flame, salt and chlorine resistant
WARRANTY	5 Years

## DRIVERS STATIC WHITE (CRI >90 Ra)

SPECIFICATION (MINIMUM BEND DIAMETER >7.9" / 200 mm in both planes)

DRIVER OPTIONS (See driver page for details)	
D010 = eldoLED, 10%, 0-10V dimming, 120-277V	DALI-DT6 = eldoLED DALI (DT6), 0.1% dimming, 120-277V
EL96 = eldoLED 24V, 0.1% 0-10V dimming, 120-277V	UNV96-WL = 0-10V / Phase Dim 96W Wet Location, 1% dimming, 120-277V
DPH = Phase Dimming, 1% dimming, 120V only	
L3D0E = Lutron Hi-lume Premier 0.1% EcoSystem, 120-277V	UNV384-WL = 0-10V / Phase Dim 384W Wet Location, 1% dimming, 120-277V

Cut Interval	DELIVERED LUMENS lm/ft						
	1800K	2400K	2700K	3000K	3500K	4000K	6000K
S05 55.56 mm (2.2")	80	104	115	123	126	129	127
S10 55.56 mm (2.2")	160	209	229	246	251	258	255

### ORDERING INFORMATION

MODEL	JACKET	CCT	LED TYPE	CABLE ENTRY	IP RATING	CABLE LENGTH	LENGTH	DRIVERS
<b>63S1010M</b> Flex 10x10 Multi	1 White	C18 1800K	S05 5 W/m (6m max.) 1.5 W/ft (19.7ft max.) S10 10 W/m (4m max.) 3 W/ft (13.1ft max.)	E End	7 IP67 2 IP20	003 0.3m (1ft)	.XXXX Length in inches	D010 EL96 DPH L3D0E DALI-DT6 UNV96-WL UNV384-WL
		C24 2400K		B Bottom		010 1m (3.3ft)		
		C27 2700K		SL Side Left		030 3m (9.8ft)		
		C30 3000K		SR Side Right		050 5m (16.4ft)		
		C35 3500K				100 10m (32.8ft)		
		C40 4000K						
C60 6000K								
<b>63S1010M</b>	<b>1</b>							

## STATIC WHITE - HIGH OUTPUT (CRI >90 Ra)

SPECIFICATION (MINIMUM BEND DIAMETER >7.9" / 200 mm in both planes)

DRIVER OPTIONS (See driver page for details)	
D010 = eldoLED, 10%, 0-10V dimming, 120-277V	DALI-DT6 = eldoLED DALI (DT6), 0.1% dimming, 120-277V
EL96 = eldoLED 24V, 0.1% 0-10V dimming, 120-277V	UNV96-WL = 0-10V / Phase Dim 96W Wet Location, 1% dimming, 120-277V
DPH = Phase Dimming, 1% dimming, 120V only	
L3D0E = Lutron Hi-lume Premier 0.1% EcoSystem, 120-277V	UNV384-WL = 0-10V / Phase Dim 384W Wet Location, 1% dimming, 120-277V

Cut Interval	DELIVERED LUMENS lm/ft						
	1800K	2400K	2700K	3000K	3500K	4000K	6000K
S10 55.56 mm (2.2")	183	239	262	282	287	295	261

### ORDERING INFORMATION

MODEL	JACKET	CCT	LED TYPE	CABLE ENTRY	IP RATING	CABLE LENGTH	LENGTH	DRIVERS
<b>63S1010HOM</b> Flex 10x10 Multi High Output	1 White	C18 1800K	S10 10 W/m (4m max.) 3 W/ft (13.1ft max.)	E End	7 IP67 2 IP20	003 0.3m (1ft)	.XXXX Length in inches	D010 EL96 DPH L3D0E DALI-DT6 UNV96-WL UNV384-WL
		C24 2400K		B Bottom		010 1m (3.3ft)		
		C27 2700K		SL Side Left		030 3m (9.8ft)		
		C30 3000K		SR Side Right		050 5m (16.4ft)		
		C35 3500K				100 10m (32.8ft)		
		C40 4000K						
C60 6000K								
<b>63S1010HOM</b>	<b>1</b>		<b>S10</b>					

# FLEX 10X10 MULTI

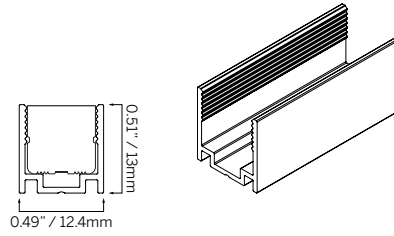
0.39x0.39"

**STATIC WHITE** **ACCESSORIES**

**TYPE** Aluminum profile  
**MOUNTING** Surface mount

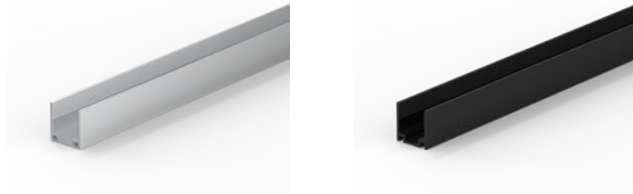
**ORDERING INFORMATION**

MODEL	FINISH	LENGTH
<b>63S1010X</b>	<b>5AP</b> Silver	<b>0030</b> 30mm (1.18")
	<b>2AP</b> Black	<b>1000</b> 1000mm (39.37")
		<b>2000</b> 2000mm (78.74")
<b>63S1010X</b>		



**30**

**1000/2000**



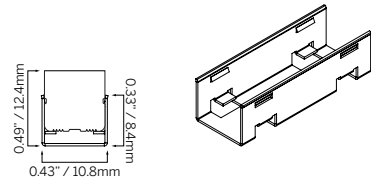
**DRIVERS**

**IES FILES**

**TYPE** Stainless Mounting Clip  
**MOUNTING** Surface mount

**ORDERING INFORMATION**

MODEL	FINISH	LENGTH
<b>63S1010X</b>	<b>5SC</b> Silver	<b>0030</b> 30mm (1.18")
	<b>2SC</b> Black	
<b>63S1010X</b>		<b>0030</b>



**ACCESSORIES**

**TYPE** Stainless Bendable Profile  
**MOUNTING** Surface mount

**ORDERING INFORMATION**

MODEL	FINISH	LENGTH
<b>63S1010X</b>	<b>5SC</b> Silver	<b>1000</b> 1000mm (39.37")
	<b>2SC</b> Black	
<b>63S1010X</b>		<b>1000</b>

