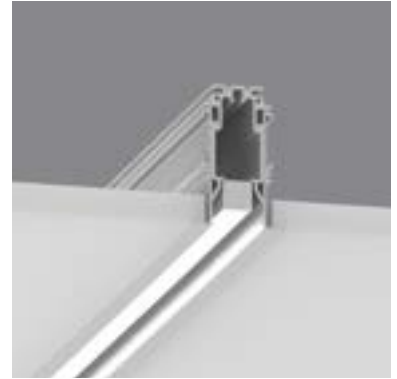


20 Linear Recessed Flush



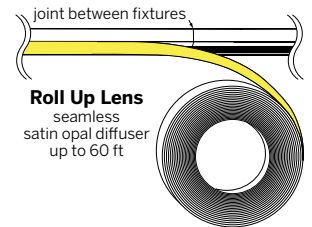
Contents

- 1 overview
- 2 specifications / configurator
- 3 photometry

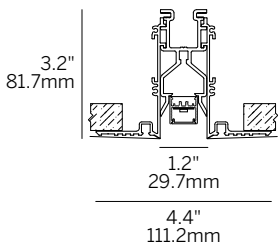


Miniature, fully recessed line of light. Trimless and bezel trim for all types of hard ceilings. Seamless integration into any drywall, wood and metal surfaces.

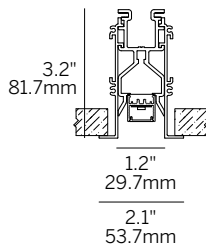
- Recessed fixture with fully recessed light for continuous mounting to any desired length (1/4" increments), as well as standard grid multiples.
- Multiple lens options for diffuse, high efficiency and luminous effect.
- Extruded aluminum housing, easily installed. Field maintainable and upgradeable LED and driver without upsetting the ceiling.
- Efficacy up to 80 lumens per watt (delivered) @ 3000K, see photometry page for details.
- 90+ CRI, 3 Step MacAdam (Static White).
- L70 (TM21 Projected 85C) Static White 60,000 hours, RGBW 50,000 hours, WD 36,000 hours.
- ETL and ETL-C for dry and damp locations.
- Lengths and angles factory cut to exact field dimension.
- Supplied with 4' class 2 plenum rated feed cable per fixture length.
- Powdercoat painted.



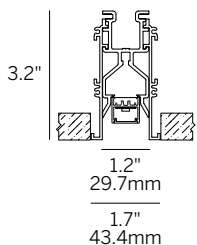
QS Quick Ship Available



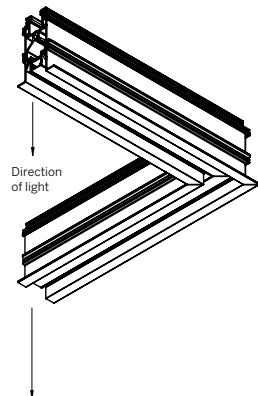
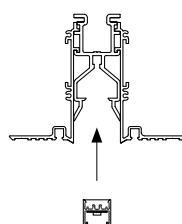
Recessed Plaster Trim (RPT)



Recessed Bezel Trim (RBT)
Recessed Grid Trim (RGT9/RGT15)



Recessed Return Trim (RRT)



Pattern Corner

Minimum Angle 45°
Maximum Angle 180°

Ordering Information									
Model	Fixation	Pattern	Length	Power ²	CRI/CCT ³	Driver ⁴	Lens	Finish	Options
WG-20LRF	RPT RBT RRT RGT9 RGT15	S P ¹ PZ ¹	A A x B A x B x C A x B x A x B	L M H	927 930 935 940 WD RGBW	X S D010 DPH L3DAE L3DOE EL96 DALI DMX	OD (std) MPL NL16 LL45B ⁵ LL45W ⁵ BDO ⁶ BDC ⁶	W (std) B S F	AWNRF BT EM WL ⁷

Model

- WG-20LRF = 20 Linear Recessed Flush

Fixation

- RPT = Recessed plaster trim
- RBT = Recessed bezel trim
- RRT = Recessed return trim
- RGT9 = Recessed grid trim 9/16"
- RGT15 = Recessed grid trim 15/16"

Pattern

- S = Straight run
- P = Standard patterns 2, 3 or 4 sided with 90° corners on the same plane¹
- PZ = Non-standard patterns and/or corners other than 90° on multiple planes, consult factory¹

Length

- A, B, C = specify inches to the nearest 0.25" (i.e. 72.25")
For patterns specify each length (i.e. 2 sided: A x B = 72.25" x 48";
3 sided: A x B x C; 4 sided: A x B x A x B)
- For 2 and 4 foot fixtures to fit ceiling grids specify 24" and 48" lengths

Power²

- L = 3W/ft low power (WD 2.7 W/ft) (24V)
- M = 6W/ft mid power (WD 5.5 W/ft) (24V) (RGBW - 7.6 W/ft)
- H = 10W/ft high power (WD 8 W/ft) (24V)

CRI / CCT (90+ CRI minimum)³

- 927 = 2700K
- 930 = 3000K
- 935 = 3500K
- 940 = 4000K
- WD = Warm Dimming (1800K - 3000K)
- RGBW = 3000K White (M power only)

Driver (remote)⁴

- X = No driver, ordered separately
- S = Standard, non-dim driver 120-277V
- D010 = eldoLED, 10%, 0-10V dimming, 120-277V
- DPH = Phase Dimming, 1% dimming, 120V only
- L3DAE = Lutron Hi-lume 1% EcoSystem, 120-277V
- L3DOE = Lutron Hi-lume Premier 0.1% EcoSystem, 120-277V
- EL96 = eldoLED, 24V, 0.1% 0-10V Dimming
- DALI = eldoLED DALI (DT6), 0.1% dimming (120-277V)
- DMX = eldoLED, 24V, 0.1% DMX Dimming

Lens

- OD = Satin opal diffuser (standard)
- MPL = Micro-prismatic lens
- NL16 = Linear narrow lens, 16°
- LL45B = Linear louver black⁵
- LL45W = Linear louver white⁵
- BDO = Block Diffuser Opal⁶
- BDC = Block Diffuser Clear⁶

Finish

- W = White, 15% gloss, RAL 9010 (standard)
- B = Black, 15% gloss, RAL 9005
- S = Silver, 15% gloss, RAL 9006
- F = Custom finished trim, specify RAL

Options

- AWNRF = Lutron Athena Wireless Node RF (specify with D010, EL96 or DALI)
- BT = Wireless CAS – Casambi (specify with D010, EL96, DALI or DMX)
- EM = Emergency (remote)
- WL = Wet Location Under Canopy / Cover⁷

- See pattern spec sheet.
- Wattage shown is for LED boards only, system wattage varies depending on driver selected.
- See photometric data sheet for delivered lumens.
- Remote power supply required. See power supply page for details.
- Louver available in 0.5" increments.
- Butt seam (lens) when in continuous run, straight runs only.
- Wet Location option available for OD / MPL lenses and recessed / surface ceiling applications only.

Lenses/Accessories



Opal Diffuser (OD)



Narrow Lens (NL16)



Louver (LL45)



Block Diffuser (BD)

Cutout Dimensions

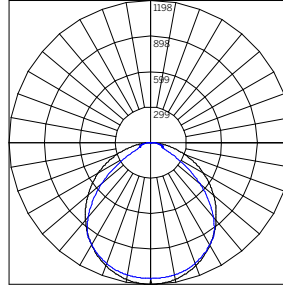
RPT – 2.25" width / length + ¼"
RBT – 1.75" width / length + ¼"
RRT – 1.75" width / length + ¼"

20 Linear Recessed Flush

WG-20LRF-...-OD-W

Delivered Lumens Per Foot

		Power			
		L [3 W/ft]	M [6 W/ft]	H [10 W/ft]	RGBW [7.6 W/ft]
CCT	927	171	341	598	-
	930	186	371	649	-
	935	220	441	772	-
	940	262	524	917	-
	WD ²	131	271	393	-
	RGBW ³	-	-	-	222
UGR ⁴		24.8	27.4	29.2	-



BEAM ANGLE (0-180) = 97.7
BEAM ANGLE (90-270) = 110.4

ILLUMINANCE - 48" OD H 3500K

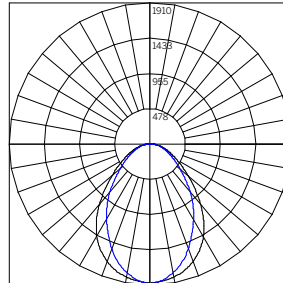
WG-20LRF-...-S-48-H-935-...-OD-W-...¹

Mounting Height [ft]	Illuminance [fc at max cd]	Beam Width [ft]
2	300	4.6
4	75	9.2
6	33	13.7
8	19	18.3
10	12	22.9
12	8	27.5
14	6	32
16	5	36.6
18	4	41.2
20	3	45.8

WG-20LRF-...-MPL-W

Delivered Lumens Per Foot

		Power			
		L [3 W/ft]	M [6 W/ft]	H [10 W/ft]	RGBW [7.6 W/ft]
CCT	927	209	418	731	-
	930	227	454	795	-
	935	270	540	944	-
	940	321	641	1122	-
	WD ²	160	332	480	-
	RGBW ³	-	-	-	272
UGR ⁴		26.3	28.9	30.7	-



BEAM ANGLE (0-180) = 73.8
BEAM ANGLE (90-270) = 85.5

ILLUMINANCE - 48" MPL H 3500K

WG-20LRF-...-S-48-H-935-...-MPL-W-...¹

Mounting Height [ft]	Illuminance [fc at max cd]	Beam Width [ft]
2	478	3
4	119	6
6	53	9
8	30	12
10	19	15
12	13	18
14	10	21
16	7	24
18	6	27
20	5	30

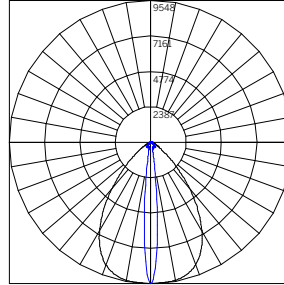
Power Multiplier				
	L [3 W/ft]	M [6 W/ft]	H [10 W/ft]	RGBW [7.6 W/ft]
9XX/RGBW	0.29	0.57	1.00	0.29
WD	0.17	0.35	0.51	-
CCT Multiplier				
	927	930	935	940
	0.77	0.84	1.00	1.19

- 1 Polar Plot and Cone of Light are applicable to part number noted; use Multiplication Factor table to approximate other models or refer to online photometry.
- 2 WD lumen data at maximum output (3000K).
- 3 RGBW lumen data at maximum output with 3000K White LED.
- 4 UGR value noted is the maximum UGR (crosswise) with 935 LEDs / 48" length.

20 Linear Recessed Flush

WG-20LRF-...-NL16-W Delivered Lumens Per Foot

		Power			
		L [3 W/ft]	M [6 W/ft]	H [10 W/ft]	RGBW [7.6 W/ft]
CCT	927	207	414	725	-
	930	225	450	787	-
	935	267	535	936	-
	940	318	635	1112	-
	WD ²	158	329	476	-
	RGBW ³	-	-	-	269
UGR ⁴		17.8	20.3	22.1	-



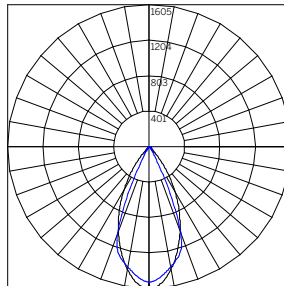
BEAM ANGLE (0-180) = 10.4
BEAM ANGLE (90-270) = 75.1

ILLUMINANCE - 48" NL16 H 3500K WG-20LRF-...-S-48-H-935-...-NL16-W-...¹

Mounting Height [ft]	Illuminance [fc at max cd]	Beam Width [ft]
2	2387	0.4
4	597	0.7
6	265	1.1
8	149	1.5
10	95	1.8
12	66	2.2
14	49	2.6
16	37	2.9
18	29	3.3
20	24	3.7

WG-20LRF-...-LL45B-W Delivered Lumens Per Foot

		Power			
		L [3 W/ft]	M [6 W/ft]	H [10 W/ft]	RGBW [7.6 W/ft]
CCT	927	55	110	193	-
	930	60	120	209	-
	935	71	142	249	-
	940	84	169	296	-
	WD ²	42	88	127	-
	RGBW ³	-	-	-	72
UGR ⁴		0.0	0.0	0.6	-



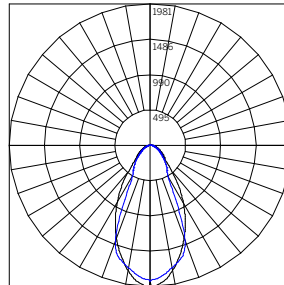
BEAM ANGLE (0-180) = 45
BEAM ANGLE (90-270) = 50

ILLUMINANCE - 48" LL45B H 3500K WG-20LRF-...-S-48-H-935-...-LL45B-W-...¹

Mounting Height [ft]	Illuminance [fc at max cd]	Beam Width [ft]
2	401	1.7
4	100	3.3
6	45	5
8	25	6.6
10	16	8.3
12	11	9.9
14	8	11.6
16	6	13.3
18	5	14.9
20	4	16.6

WG-20LRF-...-LL45W-W Delivered Lumens Per Foot

		Power			
		L [3 W/ft]	M [6 W/ft]	H [10 W/ft]	RGBW [7.6 W/ft]
CCT	927	115	229	402	-
	930	125	250	437	-
	935	148	297	519	-
	940	176	352	616	-
	WD ²	88	183	264	-
	RGBW ³	-	-	-	149
UGR ⁴		21.6	24.1	25.9	-



BEAM ANGLE (0-180) = 48.1
BEAM ANGLE (90-270) = 57.3

ILLUMINANCE - 48" LL45W H 3500K WG-20LRF-...-S-48-H-935-...-LL45W-W-...¹

Mounting Height [ft]	Illuminance [fc at max cd]	Beam Width [ft]
2	495	1.8
4	124	3.6
6	55	5.4
8	31	7.1
10	20	8.9
12	14	10.7
14	10	12.5
16	8	14.3
18	6	16.1
20	5	17.9

Power Multiplier				
	L [3 W/ft]	M [6 W/ft]	H [10 W/ft]	RGBW [7.6 W/ft]
9XX/RGBW	0.29	0.57	1.00	0.29
WD	0.17	0.35	0.51	-

CCT Multiplier				
	927	930	935	940
	0.77	0.84	1.00	1.19

- 1 Polar Plot and Cone of Light are applicable to part number noted; use Multiplication Factor table to approximate other models or refer to online photometry.
- 2 WD lumen data at maximum output (3000K).
- 3 RGBW lumen data at maximum output with 3000K White LED.
- 4 UGR value noted is the maximum UGR (crosswise) with 935 LEDs / 48" length.