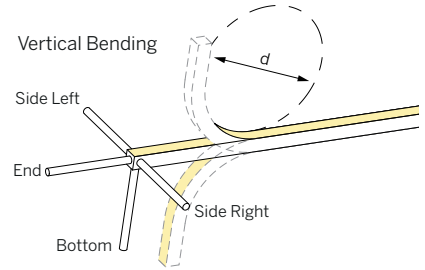
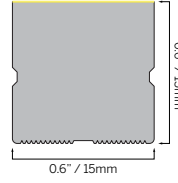


FLEX 15x15 VERTICAL BLACK

0.6x0.6"



SPECIFICATION	
MATERIAL	Silicone
MOUNTING	Surface
IP RATING	IP67, IP20
BINNING	3 Step
LIFETIME (L70)	50,000hrs based on LM-80 & TM-21 applicable test data
DRIVER REQUIREMENT	24VDC Constant voltage
PROTECTION	UV, flame, salt and chlorine resistant
WARRANTY	5 Years

STATIC WHITE (CRI >90 Ra)

SPECIFICATION (MINIMUM BEND DIAMETER >9.8" / 250 mm)

DRIVER OPTIONS (See driver page for details)	
D010 = eldoLED, 10%, 0-10V dimming, 120-277V	DALI-DT6 = eldoLED DALI (DT6), 0.1% dimming, 120-277V
EL96 = eldoLED 24V, 0.1% 0-10V dimming, 120-277V	UNV96-WL = 0-10V / Phase Dim 96W Wet Location, 1% dimming, 120-277V
DPH = Phase Dimming, 1% dimming, 120V only	
L3D0E = Lutron Hi-lume Premier 0.1% EcoSystem, 120-277V	UNV384-WL = 0-10V / Phase Dim 384W Wet Location, 1% dimming, 120-277V

Cut Interval	DELIVERED LUMENS lm/ft						
	1800K	2400K	2700K	3000K	3500K	4000K	6000K
S05 50 mm (2")	4	5	6	7	7	7	7
S12 50 mm (2")	10	13	15	16	16	16	16

ORDERING INFORMATION									
MODEL	JACKET	CCT	LED TYPE	CABLE ENTRY	IP RATING	CABLE LENGTH	LENGTH	DRIVERS	
63S1515V Flex 15x15 Vertical	2 Black	C18 1800K	S05 5 W/m (16m max.)	E End	7 IP67	O03 0.3m (1ft)	.XXXX Length in inches	D010 EL96 DPH L3D0E DALI-DT6 UNV96-WL UNV384-WL	
		C24 2400K	1.5 W/ft (52.5ft max.)	B Bottom	2 IP20	O10 1m (3.3ft)			
		C27 2700K	S12 12 W/m (8m max.)	SL Side Left		O30 3m (9.8ft)			
		C30 3000K	3.7 W/ft (26.2ft max.)	SR Side Right		O50 5m (16.4ft)			
		C35 3500K				100 10m (32.8ft)			
		C40 4000K							
C60 6000K									
63S1515V	2								

STATIC WHITE - HIGH OUTPUT (CRI >90 Ra)

SPECIFICATION (MINIMUM BEND DIAMETER >9.8" / 250 mm)

DRIVER OPTIONS (See driver page for details)	
D010 = eldoLED, 10%, 0-10V dimming, 120-277V	DALI-DT6 = eldoLED DALI (DT6), 0.1% dimming, 120-277V
EL96 = eldoLED 24V, 0.1% 0-10V dimming, 120-277V	UNV96-WL = 0-10V / Phase Dim 96W Wet Location, 1% dimming, 120-277V
DPH = Phase Dimming, 1% dimming, 120V only	
L3D0E = Lutron Hi-lume Premier 0.1% EcoSystem, 120-277V	UNV384-WL = 0-10V / Phase Dim 384W Wet Location, 1% dimming, 120-277V

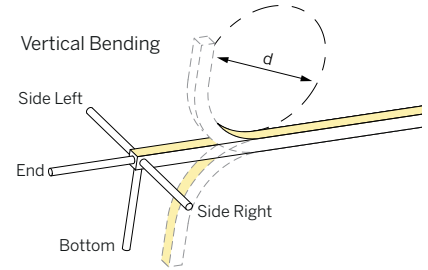
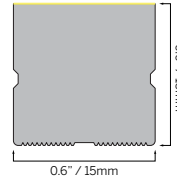
Cut Interval	DELIVERED LUMENS lm/ft						
	1800K	2400K	2700K	3000K	3500K	4000K	6000K
S13 62.5 mm (2.5")	17	23	24	27	27	27	27

ORDERING INFORMATION									
MODEL	JACKET	CCT	LED TYPE	CABLE ENTRY	IP RATING	CABLE LENGTH	LENGTH	DRIVERS	
63S1515HOV Flex 15x15 Vertical High Output	2 Black	C18 1800K	S13 13.5 W/m (5m max.)	E End	7 IP67	O03 0.3m (1ft)	.XXXX Length in inches	D010 EL96 DPH L3D0E DALI-DT6 UNV96-WL UNV384-WL	
		C24 2400K	4.1 W/ft (16.4ft max.)	B Bottom	2 IP20	O10 1m (3.3ft)			
		C27 2700K		SL Side Left		O30 3m (9.8ft)			
		C30 3000K		SR Side Right		O50 5m (16.4ft)			
		C35 3500K				100 10m (32.8ft)			
		C40 4000K							
C60 6000K									
63S1515HOV	2		S13						

FLEX 15x15 VERTICAL BLACK

0.6x0.6"

- STATIC WHITE
- FREE CUT
- TUNABLE WHITE
- WARM DIM
- RGB/RGBW
- PIXEL



SPECIFICATION	
MATERIAL	Silicone
MOUNTING	Surface
IP RATING	IP67, IP20
BINNING	3 Step
LIFETIME (L70)	50,000hrs based on LM-80 & TM-21 applicable test data
DRIVER REQUIREMENT	24VDC Constant voltage
PROTECTION	UV, flame, salt and chlorine resistant
WARRANTY	5 Years

STATIC WHITE FREE CUT (CRI >90 Ra)

SPECIFICATION (MINIMUM BEND DIAMETER >9.8" / 250 mm)

- DRIVERS
- IES FILES

DRIVER OPTIONS (See driver page for details)	
D010 = eldoLED, 10%, 0-10V dimming, 120-277V	DALI-DT6 = eldoLED DALI (DT6), 0.1% dimming, 120-277V
EL96 = eldoLED 24V, 0.1% 0-10V dimming, 120-277V	UNV96-WL = 0-10V / Phase Dim 96W Wet Location, 1% dimming, 120-277V
DPH = Phase Dimming, 1% dimming, 120V only	
L3D0E = Lutron Hi-lume Premier 0.1% EcoSystem, 120-277V	UNV384-WL = 0-10V / Phase Dim 384W Wet Location, 1% dimming, 120-277V

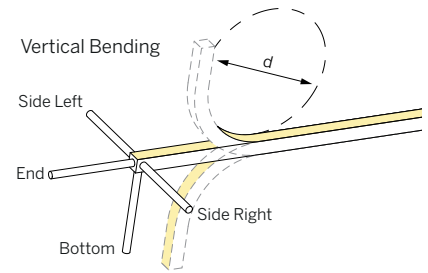
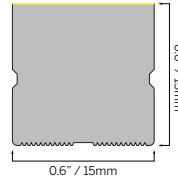
Cut Interval	DELIVERED LUMENS lm/ft						
	1800K	2400K	2700K	3000K	3500K	4000K	6000K
SF05	Free Cut	4	5	6	6	6	6
SF12	Free Cut	9	12	13	13	13	14

- ACCESSORIES

ORDERING INFORMATION									
MODEL	JACKET	CCT	LED TYPE	CABLE ENTRY	IP RATING	CABLE LENGTH	LENGTH	DRIVERS	
63S1515V Flex 15x15 Vertical	2 Black	C18 1800K	SF05 5 W/m (12.5m max.)	E End B Bottom SL Side Left SR Side Right	7 IP67 2 IP20	003 0.3m (1ft)	.XXXX Length in inches	D010 EL96 DPH L3D0E DALI-DT6 UNV96-WL UNV384-WL	
		C24 2400K	1.5 W/ft (41ft max.)			010 1m (3.3ft)			
		C27 2700K	SF12 12 W/m (6m max.)			030 3m (9.8ft)			
		C30 3000K	3.7 W/ft (19.7ft max.)			050 5m (16.4ft)			
		C35 3500K				100 10m (32.8ft)			
		C40 4000K							
C60 6000K									
63S1515V	2								

FLEX 15x15 VERTICAL BLACK

0.6x0.6"



SPECIFICATION	
MATERIAL	Silicone
MOUNTING	Surface
IP RATING	IP67, IP20
BINNING	3 Step
LIFETIME (L70)	50,000hrs based on LM-80 & TM-21 applicable test data
DRIVER REQUIREMENT	24VDC Constant voltage
PROTECTION	UV, flame, salt and chlorine resistant
WARRANTY	5 Years

TUNABLE WHITE (CRI >90 Ra)

SPECIFICATION (MINIMUM BEND DIAMETER >9.8" / 250 mm)

DRIVER OPTIONS (See driver page for details)	
DALI-DT6 = eldoLED DALI (DT6), 0.1% dimming, 120-277V	
DALI-DT8 = eldoLED DALI (DT8), 0.1% dimming, 120-277V	

	Cut Interval	DELIVERED LUMENS lm/ft						
		1800K	2400K	2700K	3000K	3500K	4000K	6000K
CT10	62.5 mm (2.5")	7	10	12	12	12	12	13

- DRIVERS
- IES FILES
- ACCESSORIES

ORDERING INFORMATION										
MODEL	JACKET	CCT (LOW)	CCT (HIGH)	LED TYPE*	CABLE ENTRY	IP RATING	CABLE LENGTH	LENGTH	DRIVERS	
63S1515V Flex 15x15 Vertical	2 Black	C18 1800K	24 2400K	CT10 2x9.6 W/m (7m max.) 2x2.9 W/ft (23ft max.) * Rated wattage is maximum wattage per channel. Combined power must also not exceed this value.	E End B Bottom SL Side Left SR Side Right	7 IP67 2 IP20	003 0.3m (1ft)	.XXXX Length in inches	DALI-DT6 DALI-DT8	
		C24 2400K	27 2700K				010 1m (3.3ft)			
		C27 2700K	30 3000K				030 3m (9.8ft)			
		C30 3000K	35 3500K				050 5m (16.4ft)			
		C35 3500K	40 4000K				100 10m (32.8ft)			
C40 4000K	60 6000K									
63S1515V	2			CT10						

TUNABLE WHITE - HIGH OUTPUT (CRI >90 Ra)

SPECIFICATION (MINIMUM BEND DIAMETER >9.8" / 250 mm)

DRIVER OPTIONS (See driver page for details)	
DALI-DT6 = eldoLED DALI (DT6), 0.1% dimming, 120-277V	
DALI-DT8 = eldoLED DALI (DT8), 0.1% dimming, 120-277V	

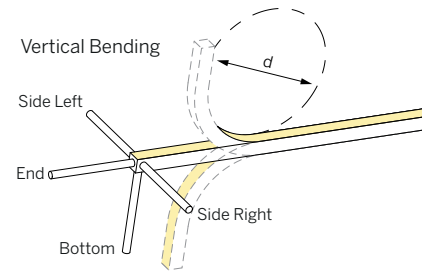
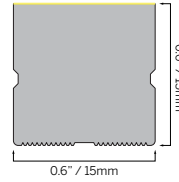
	Cut Interval	DELIVERED LUMENS lm/ft						
		1800K	2400K	2700K	3000K	3500K	4000K	6000K
CT10	83.3 mm (3.3")	12	16	18	20	20	20	20
CT13	83.3 mm (3.3")	15	21	24	25	25	26	26

ORDERING INFORMATION										
MODEL	JACKET	CCT (LOW)	CCT (HIGH)	LED TYPE*	CABLE ENTRY	IP RATING	CABLE LENGTH	LENGTH	DRIVERS	
63S1515HOV Flex 15x15 Vertical High Output	2 Black	C18 1800K	24 2400K	CT10 2x10 W/m (4m max.) 2x3 W/ft (13.1ft max.) CT13 2x13 W/m (3m max.) 2x4 W/ft (9.8ft max.) * Rated wattage is maximum wattage per channel. Combined power must also not exceed this value.	E End B Bottom SL Side Left SR Side Right	7 IP67 2 IP20	003 0.3m (1ft)	.XXXX Length in inches	DALI-DT6 DALI-DT8	
		C24 2400K	27 2700K				010 1m (3.3ft)			
		C27 2700K	30 3000K				030 3m (9.8ft)			
		C30 3000K	35 3500K				050 5m (16.4ft)			
		C35 3500K	40 4000K				100 10m (32.8ft)			
C40 4000K	60 6000K									
63S1515HOV	2									

FLEX 15x15 VERTICAL BLACK

0.6x0.6"

- STATIC WHITE
- FREE CUT
- TUNABLE WHITE
- WARM DIM
- RGB/RGBW
- PIXEL



SPECIFICATION	
MATERIAL	Silicone
MOUNTING	Surface
IP RATING	IP67, IP20
BINNING	3 Step
LIFETIME (L70)	50,000hrs based on LM-80 & TM-21 applicable test data
DRIVER REQUIREMENT	24VDC Constant voltage
PROTECTION	UV, flame, salt and chlorine resistant
WARRANTY	5 Years

WARM DIM (CRI >90 Ra)

SPECIFICATION (MINIMUM BEND DIAMETER >9.8" / 250 mm)

DRIVERS	DRIVER OPTIONS (See driver page for details)
	MAGSDM96-WD = 0-10V / Phase Dim 96W, 0.1% CCR Dimming for Warm Dim, 120-277V (Phase - 120V only)

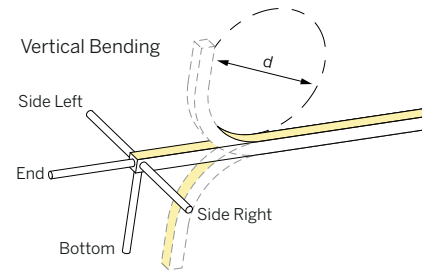
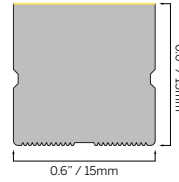
	DELIVERED LUMENS lm/ft		
	Cut Interval	2700K	3000K
14R	83.33 mm (2")	14	15

ORDERING INFORMATION										
MODEL	JACKET	CCT	LED TYPE	CABLE ENTRY	IP RATING	CABLE LENGTH	LENGTH			DRIVERS
63S1515V Flex 15x15 Vertical	2 Black	C2718W 2700-1800K C3018W 3000-1800K	14R 14 W/m (5m max.) 4.3 W/ft (16.4ft max.)	E End B Bottom SL Side Left SR Side Right	7 IP67 2 IP20	003 0.3m (1ft) 010 1m (3.3ft) 030 3m (9.8ft) 050 5m (16.4ft) 100 10m (32.8ft)	.XXXX Length in inches			MAGSDM96-WD
63S1515V	2		14R							MAGSDM96-WD

FLEX 15x15 VERTICAL BLACK

0.6x0.6"

- STATIC WHITE
- FREE CUT
- TUNABLE WHITE
- WARM DIM
- RGB/RGBW
- PIXEL



SPECIFICATION	
MATERIAL	Silicone
MOUNTING	Surface
IP RATING	IP67, IP20
BINNING	3 Step
LIFETIME (L70)	50,000hrs based on LM-80 & TM-21 applicable test data
DRIVER REQUIREMENT	24VDC Constant voltage
PROTECTION	UV, flame, salt and chlorine resistant
WARRANTY	5 Years

RGB

SPECIFICATION (MINIMUM BEND DIAMETER >11.8" / 300 mm)

DRIVER OPTIONS (See driver page for details)
DMX = eldoLED, 24V, 0.1% DMX Dimming

	Cut Interval	DELIVERED LUMENS lm/ft		
		RED	GREEN	BLUE
L12	100 mm (3.9")	2	5	1

ORDERING INFORMATION									
MODEL	JACKET	CCT	LED TYPE	CABLE ENTRY	IP RATING	CABLE LENGTH	LENGTH	DRIVERS	
63S1515V Flex 15x15 Vertical	2 Black	RGB RGB	L12 12 W/m (5m max.) 3.7 W/ft (16.4ft max.)	E End B Bottom SL Side Left SR Side Right	7 IP67 2 IP20	003 0.3m (1ft) 010 1m (3.3ft) 030 3m (9.8ft) 050 5m (16.4ft) 100 10m (32.8ft)	.XXXX Length in inches	DMX	
63S1515V	2	RGB	L12					DMX	

RGBW

SPECIFICATION (MINIMUM BEND DIAMETER >11.8" / 300 mm)

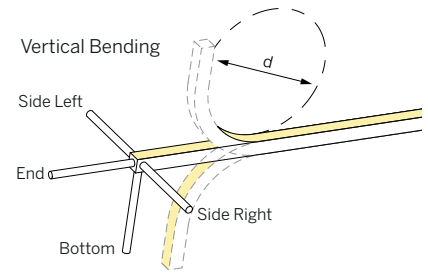
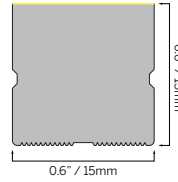
DRIVER OPTIONS (See driver page for details)
DMX = eldoLED, 24V, 0.1% DMX Dimming

	Cut Interval	DELIVERED LUMENS lm/ft					
		RED	GREEN	BLUE	2700K	3000K	4000K
L16	100 mm (3.9")	2	5	1	5	5	5

ORDERING INFORMATION									
MODEL	JACKET	CCT	LED TYPE	CABLE ENTRY	IP RATING	CABLE LENGTH	LENGTH	DRIVERS	
63S1515V Flex 15x15 Vertical	2 Black	RGBW27 RGBW(2700K) RGBW30 RGBW(3000K) RGBW40 RGBW(4000K)	L16 16 W/m (5m max.) 4.9 W/ft (16.4ft max.)	E End B Bottom SL Side Left SR Side Right	7 IP67 2 IP20	003 0.3m (1ft) 010 1m (3.3ft) 030 3m (9.8ft) 050 5m (16.4ft) 100 10m (32.8ft)	.XXXX Length in inches	DMX	
63S1515V	2		L16					DMX	

BLACK FLEX 15x15 VERTICAL

0.6x0.6"



SPECIFICATION	
MATERIAL	Silicone
MOUNTING	Surface
IP RATING	IP67, IP20
BINNING	3 Step
LIFETIME (L70)	50,000hrs based on LM-80 & TM-21 applicable test data
DRIVER REQUIREMENT	24VDC Constant voltage
PROTECTION	UV, flame, salt and chlorine resistant
WARRANTY	5 Years

PIXEL - STATIC WHITE (CRI >90 Ra)

SPECIFICATION (MINIMUM BEND DIAMETER >11.8" / 300 mm)

DRIVERS	DRIVER OPTIONS (See driver page for details) DMX = eldoLED, 24V, 0.1% DMX Dimming	DELIVERED LUMENS lm/ft									
		Pixels	DMX Addresses	Cut Interval	1800K	2400K	2700K	3000K	3500K	4000K	6000K
DMX10P13		10 /m (3.94")	10 /m (1 /px)	100 mm (3.9")	10	13	14	16	16	16	16

ORDERING INFORMATION									
MODEL	JACKET	CCT	LED TYPE	CABLE ENTRY	IP RATING	CABLE LENGTH	LENGTH	DRIVERS	
63S1515V Flex 15x15 Vertical	2 Black	C18 1800K	DMX10P13 13.5 W/m (5m max.) 4.1 W/ft (16.4ft max.)	E End B Bottom SL Side Left SR Side Right	7 IP67 2 IP20	003 0.3m (1ft)	.XXXX Length in inches	DMX	
		C24 2400K				010 1m (3.3ft)			
		C27 2700K				030 3m (9.8ft)			
		C30 3000K				050 5m (16.4ft)			
		C35 3500K				100 10m (32.8ft)			
		C40 4000K							
		C60 6000K							
63S1515V	2		DMX10P13					DMX	

PIXEL - TUNABLE WHITE (CRI >90 Ra)

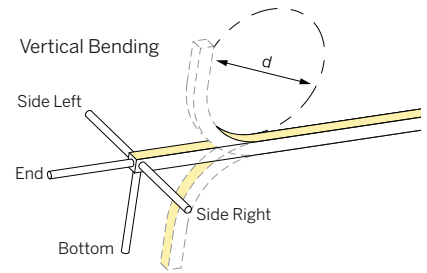
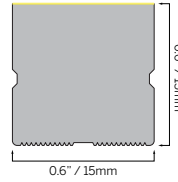
SPECIFICATION (MINIMUM BEND DIAMETER >11.8" / 300 mm)

DRIVERS	DRIVER OPTIONS (See driver page for details) DMX = eldoLED, 24V, 0.1% DMX Dimming	80.5 DELIVERED LUMENS lm/ft									
		Pixels	DMX Addresses	Cut Interval	1800K	2400K	2700K	3000K	3500K	4000K	6000K
CTDMX10P13		10 /m (3.94")	20 /m (2 /ft)	100 mm (3.9")	5	7	7	8	8	8	8

ORDERING INFORMATION										
MODEL	JACKET	CCT (LOW)	CCT (HIGH)	LED TYPE	CABLE ENTRY	IP RATING	CABLE LENGTH	LENGTH	DRIVERS	
63S1515V Flex 15x15 Vertical	2 Black	C18 1800K	24 2400K	CTDMX10P13 13.5 W/m (5m max.) 4.1 W/ft (16.4ft max.)	E End B Bottom SL Side Left SR Side Right	7 IP67 2 IP20	003 0.3m (1ft)	.XXXX Length in inches	DMX	
		C24 2400K	27 2700K				010 1m (3.3ft)			
		C27 2700K	30 3000K				030 3m (9.8ft)			
		C30 3000K	35 3500K				050 5m (16.4ft)			
		C35 3500K	40 4000K				100 10m (32.8ft)			
		C40 4000K	60 6000K							
		C60 6000K								
63S1515V	2			CTDMX10P13					DMX	

FLEX 15x15 VERTICAL BLACK

0.6x0.6"



SPECIFICATION	
MATERIAL	Silicone
MOUNTING	Surface
IP RATING	IP67, IP20
BINNING	3 Step
LIFETIME (L70)	50,000hrs based on LM-80 & TM-21 applicable test data
DRIVER REQUIREMENT	24VDC Constant voltage
PROTECTION	UV, flame, salt and chlorine resistant
WARRANTY	5 Years

PIXEL - RGB

SPECIFICATION (MINIMUM BEND DIAMETER >11.8" / 300 mm)

DRIVER OPTIONS (See driver page for details)
DMX = eldoLED, 24V, 0.1% DMX Dimming

	Pixels	DMX Addresses	Cut Interval	DELIVERED LUMENS lm/ft		
				RED	GREEN	BLUE
DMX02P14	2 /m (19.7")	6 /m (3 /px)	500 mm (19.7")	1	4	1
DMX10P14	10 /m (3.94")	30 /m (3 /px)	100 mm (3.9")	1	4	1

ORDERING INFORMATION

MODEL	JACKET	CCT	LED TYPE	CABLE ENTRY	IP RATING	CABLE LENGTH	LENGTH	DRIVERS
63S1515V Flex 15x15 Vertical	2 Black	RGB RGB	DMX02P14 14 W/m (5m max.) 4.3 W/ft (16.4ft max.) DMX10P14 14 W/m (5m max.) 4.3 W/ft (16.4ft max.)	E End B Bottom SL Side Left SR Side Right	7 IP67 2 IP20	003 0.3m (1ft) 010 1m (3.3ft) 030 3m (9.8ft) 050 5m (16.4ft) 100 10m (32.8ft)	.XXXX Length in inches	DMX
63S1515V	2	RGB						DMX

PIXEL - RGBW

SPECIFICATION (MINIMUM BEND DIAMETER >11.8" / 300 mm)

DRIVER OPTIONS (See driver page for details)
DMX = eldoLED, 24V, 0.1% DMX Dimming

	Pixels	DMX Addresses	Cut Interval	DELIVERED LUMENS lm/ft					
				RED	GREEN	BLUE	2700K	3000K	4000K
DMX10P16	10 /m (3.94")	40 /m (4 /px)	100 mm (3.9")	11	29	7	26	28	29

ORDERING INFORMATION

MODEL	JACKET	CCT	LED TYPE	CABLE ENTRY	IP RATING	CABLE LENGTH	LENGTH	DRIVERS
63S1515V Flex 15x15 Vertical	2 Black	RGBW27 RGBW(2700K) RGBW30 RGBW(3000K) RGBW40 RGBW(4000K)	DMX10P16 16 W/m 5m max.) 4.9 W/ft (16.4ft max.)	E End B Bottom SL Side Left SR Side Right	7 IP67 2 IP20	003 0.3m (1ft) 010 1m (3.3ft) 030 3m (9.8ft) 050 5m (16.4ft) 100 10m (32.8ft)	.XXXX Length in inches	DMX
63S1515V	2		DMX10P16					DMX

FLEX 15x15 VERTICAL BLACK

0.6x0.6"

ACCESSORIES

STATIC WHITE

TYPE Aluminum profile
MOUNTING Surface mount

FREE CUT

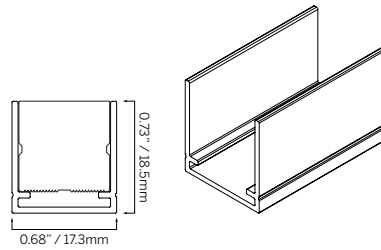
ORDERING INFORMATION			
MODEL	FINISH	LENGTH	
63S1515X	5AP Silver	0030	30mm (1.18")
	2AP Black	1000	1000mm (39.37")
63S1515X			

TUNABLE WHITE

WARM DIM

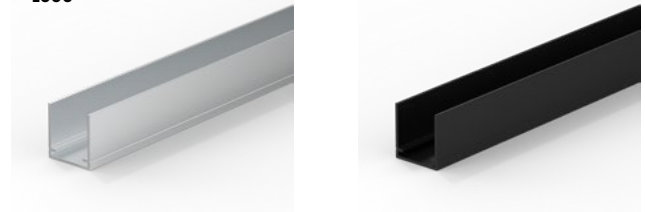
RGB/RGBW

PIXEL



30

1000



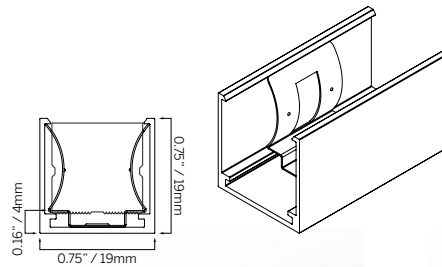
DRIVERS

TYPE Locking profile
MOUNTING Surface mount

IES FILES

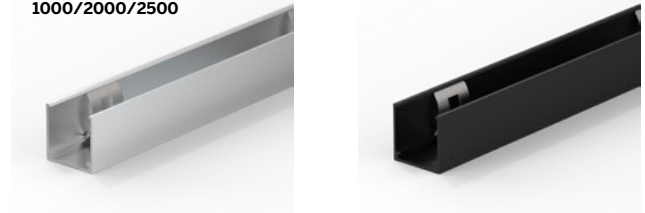
ACCESSORIES

ORDERING INFORMATION			
MODEL	FINISH	LENGTH	
63S1515X	5LP Silver	0035	35mm (1.38")
	2LP Black	1000	1000mm (39.37")
		2000	2000mm (78.74")
		2500	2000mm (98.43")
63S1515X			



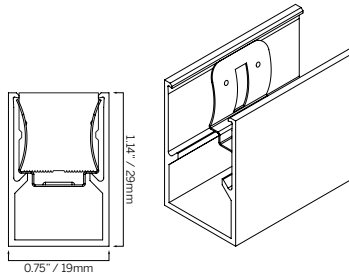
35

1000/2000/2500



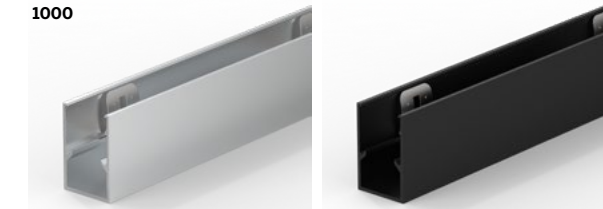
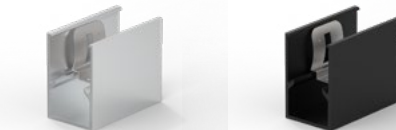
TYPE Deep Self Locking Profile
MOUNTING Surface mount

ORDERING INFORMATION			
MODEL	FINISH	LENGTH	
63S1515X	5LPC Silver	0035	35mm (1.38")
	2LPC Black	1000	1000mm (39.37")
63S1515X			



35

1000



FLEX 15x15 VERTICAL BLACK

0.6x0.6"

ACCESSORIES

STATIC WHITE

TYPE Stainless Mounting Clip
MOUNTING Surface mount

FREE CUT

ORDERING INFORMATION

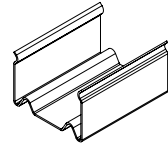
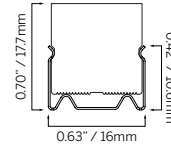
MODEL	FINISH	LENGTH
63S1515V	5SC Silver 2SC Black	0020 20mm (0.79") 1000 1000mm (39.37")
63S1515V		

TUNABLE WHITE

WARM DIM

RGB/RGBW

PIXEL



DRIVERS

IES FILES

TYPE Stainless Bendable Profile
MOUNTING Surface mount

ACCESSORIES

ORDERING INFORMATION

MODEL	FINISH	LENGTH
63S1515X	5SC Silver 2SC Black	1000 1000mm (39.37")
63S1515X		1000

