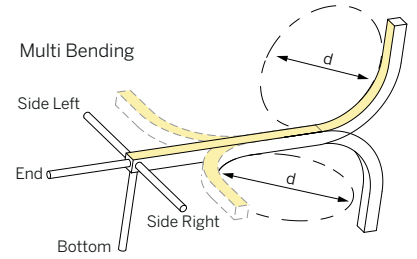
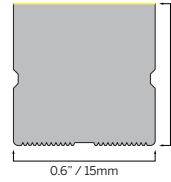


FLEX 15x15 MULTI

0.6x0.6"

- STATIC WHITE
- FREE CUT
- TUNABLE WHITE



SPECIFICATION	
MATERIAL	Silicone
MOUNTING	Surface
IP RATING	IP67, IP20
BINNING	3 Step
LIFETIME (L70)	50,000hrs based on LM-80 & TM-21 applicable test data
DRIVER REQUIREMENT	24VDC Constant voltage
PROTECTION	UV, flame, salt and chlorine resistant
WARRANTY	5 Years

DRIVERS STATIC WHITE (CRI >90 Ra)

SPECIFICATION (MINIMUM BEND DIAMETER >11.8" / 300 mm)

DRIVER OPTIONS (See driver page for details)	
D010 = eldoLED, 10%, 0-10V dimming, 120-277V	DALI-DT6 = eldoLED DALI (DT6), 0.1% dimming, 120-277V
EL96 = eldoLED 24V, 0.1% 0-10V dimming, 120-277V	UNV96-WL = 0-10V / Phase Dim 96W Wet Location, 1% dimming, 120-277V
DPH = Phase Dimming, 1% dimming, 120V only	
L3D0E = Lutron Hi-lume Premier 0.1% EcoSystem, 120-277V	UNV384-WL = 0-10V / Phase Dim 384W Wet Location, 1% dimming, 120-277V

Cut Interval	DELIVERED LUMENS lm/ft							
	1800K	2400K	2700K	3000K	3500K	4000K	6000K	
S05 50 mm (2")	60	78	85	92	94	97	95	
S10 50 mm (2")	116	152	166	179	182	188	185	

ACCESSORIES ORDERING INFORMATION

MODEL	JACKET	CCT	LED TYPE	CABLE ENTRY	IP RATING	CABLE LENGTH	LENGTH	DRIVERS
63S1515M Flex 15x15 Multi	1 White	C18 1800K	S05 5 W/m (8m max.)	E End	7 IP67	003 0.3m (1ft)	.XXXX Length in inches	D010
		C24 2400K	1.5 W/ft (26.3ft max.)	B Bottom	2 IP20	010 1m (3.3ft)		EL96
		C27 2700K	10 W/m (5m max.)	SL Side Left		030 3m (9.8ft)		DPH
		C30 3000K	3 W/ft (16.4ft max.)	SR Side Right		050 5m (16.4ft)		L3D0E
		C35 3500K				100 10m (32.8ft)		DALI-DT6
		C40 4000K						UNV96-WL
C60 6000K					UNV384-WL			
63S1515M	1							

STATIC WHITE - HIGH OUTPUT (CRI >90 Ra)

SPECIFICATION (MINIMUM BEND DIAMETER >11.8" / 300 mm)

DRIVER OPTIONS (See driver page for details)	
D010 = eldoLED, 10%, 0-10V dimming, 120-277V	DALI-DT6 = eldoLED DALI (DT6), 0.1% dimming, 120-277V
EL96 = eldoLED 24V, 0.1% 0-10V dimming, 120-277V	UNV96-WL = 0-10V / Phase Dim 96W Wet Location, 1% dimming, 120-277V
DPH = Phase Dimming, 1% dimming, 120V only	
L3D0E = Lutron Hi-lume Premier 0.1% EcoSystem, 120-277V	UNV384-WL = 0-10V / Phase Dim 384W Wet Location, 1% dimming, 120-277V

Cut Interval	DELIVERED LUMENS lm/ft							
	1800K	2400K	2700K	3000K	3500K	4000K	6000K	
S12 50 mm (2")	162	212	229	249	254	261	257	

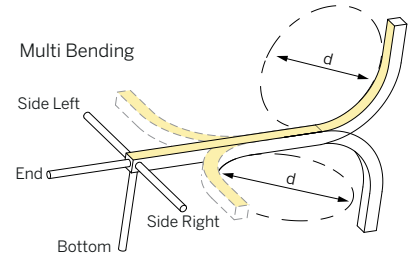
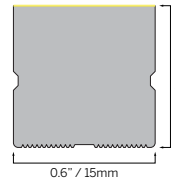
ACCESSORIES ORDERING INFORMATION

MODEL	JACKET	CCT	LED TYPE	CABLE ENTRY	IP RATING	CABLE LENGTH	LENGTH	DRIVERS
63S1515HOM Flex 15x15 Multi High Output	1 White	C18 1800K	S12 12 W/m (5m max.)	E End	7 IP67	003 0.3m (1ft)	.XXXX Length in inches	D010
		C24 2400K	4 W/ft (16.4ft max.)	B Bottom	2 IP20	010 1m (3.3ft)		EL96
		C27 2700K		SL Side Left		030 3m (9.8ft)		DPH
		C30 3000K		SR Side Right		050 5m (16.4ft)		L3D0E
		C35 3500K				100 10m (32.8ft)		DALI-DT6
		C40 4000K						UNV96-WL
C60 6000K					UNV384-WL			
63S1515HOM	1		S12					

FLEX 15x15 MULTI

0.6x0.6"

STATIC WHITE
FREE CUT
TUNABLE WHITE



SPECIFICATION	
MATERIAL	Silicone
MOUNTING	Surface
IP RATING	IP67, IP20
BINNING	3 Step
LIFETIME (L70)	50,000hrs based on LM-80 & TM-21 applicable test data
DRIVER REQUIREMENT	24VDC Constant voltage
PROTECTION	UV, flame, salt and chlorine resistant
WARRANTY	5 Years

DRIVERS **STATIC WHITE FREE CUT (CRI >90 Ra)**
SPECIFICATION (MINIMUM BEND DIAMETER >11.8" / 300 mm)

DRIVER OPTIONS (See driver page for details)	
D010 = eldoLED, 10%, 0-10V dimming, 120-277V	DALI-DT6 = eldoLED DALI (DT6), 0.1% dimming, 120-277V
EL96 = eldoLED 24V, 0.1% 0-10V dimming, 120-277V	UNV96-WL = 0-10V / Phase Dim 96W Wet Location, 1% dimming, 120-277V
DPH = Phase Dimming, 1% dimming, 120V only	
L3D0E = Lutron Hi-lume Premier 0.1% EcoSystem, 120-277V	UNV384-WL = 0-10V / Phase Dim 384W Wet Location, 1% dimming, 120-277V

Cut Interval	DELIVERED LUMENS lm/ft							
	1800K	2400K	2700K	3000K	3500K	4000K	6000K	
SF05	Free Cut	52	69	80	80	82	89	84
SF10	Free Cut	102	133	156	157	160	173	163

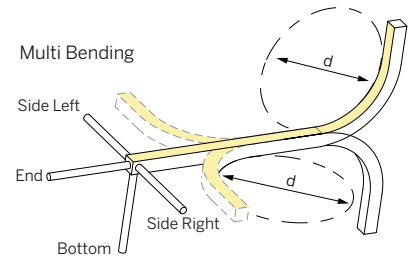
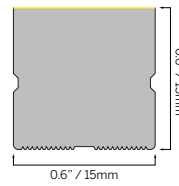
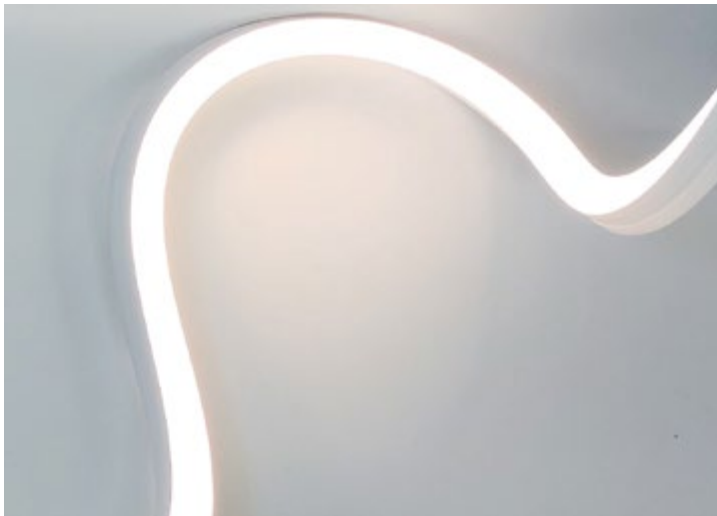
ACCESSORIES ORDERING INFORMATION

MODEL	JACKET	CCT	LED TYPE	CABLE ENTRY	IP RATING	CABLE LENGTH	LENGTH	DRIVERS
63S1515M Flex 15x15 Multi	1 White	C18 1800K	SF05 5 W/m (7.5m max.)	E End	7 IP67	003 0.3m (1ft)	.XXXX Length in inches	D010
		C24 2400K	1.5 W/ft (24.6ft max.)	B Bottom	2 IP20	010 1m (3.3ft)		EL96
		C27 2700K	SF10 10 W/m (5m max.)	SL Side Left		030 3m (9.8ft)		DPH
		C30 3000K	3 W/ft (16.4ft max.)	SR Side Right		050 5m (16.4ft)		L3D0E
		C35 3500K				100 10m (32.8ft)		DALI-DT6
		C40 4000K						UNV96-WL
C60 6000K					UNV384-WL			
63S1515M	1							

FLEX 15x15 MULTI

0.6x0.6"

- STATIC WHITE
- FREE CUT
- TUNABLE WHITE



SPECIFICATION	
MATERIAL	Silicone
MOUNTING	Surface
IP RATING	IP67, IP20
BINNING	3 Step
LIFETIME (L70)	50,000hrs based on LM-80 & TM-21 applicable test data
DRIVER REQUIREMENT	24VDC Constant voltage
PROTECTION	UV, flame, salt and chlorine resistant
WARRANTY	5 Years

DRIVERS **TUNABLE WHITE (CRI >90 Ra)**
 SPECIFICATION (MINIMUM BEND DIAMETER >11.8" / 300 mm)

DRIVER OPTIONS (See driver page for details)

DALI-DT6 = eldoLED DALI (DT6), 0.1% dimming, 120-277V
DALI-DT8 = eldoLED DALI (DT8), 0.1% dimming, 120-277V

Cut Interval	DELIVERED LUMENS lm/ft						
	1800K	2400K	2700K	3000K	3500K	4000K	6000K
CT08 50 mm (2")	74	104	115	120	121	123	119

ACCESSORIES **ORDERING INFORMATION**

MODEL	JACKET	CCT (LOW)	CCT (HIGH)	LED TYPE*	CABLE ENTRY	IP RATING	CABLE LENGTH	LENGTH	DRIVERS
63S1515M Flex 15x15 Multi	1 White	C18 1800K	24 2400K	CT08 2x8 W/m (5m max.) 2x2.4 W/ft (16.4ft max.) <small>* Rated wattage is maximum wattage per channel. Combined power must also not exceed this value.</small>	E End B Bottom SL Side Left SR Side Right	7 IP67 2 IP20	003 0.3m (1ft)	.XXXX Length in inches	DALI-DT6 DALI-DT8
		C24 2400K	27 2700K				010 1m (3.3ft)		
		C27 2700K	30 3000K				030 3m (9.8ft)		
		C30 3000K	35 3500K				050 5m (16.4ft)		
		C35 3500K	40 4000K				100 10m (32.8ft)		
63S1515M	1			CT08					

FLEX 15x15 MULTI

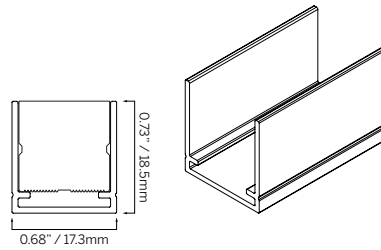
0.6x0.6"

ACCESSORIES

STATIC WHITE
FREE CUT
TUNABLE WHITE

TYPE Aluminum profile
MOUNTING Surface mount

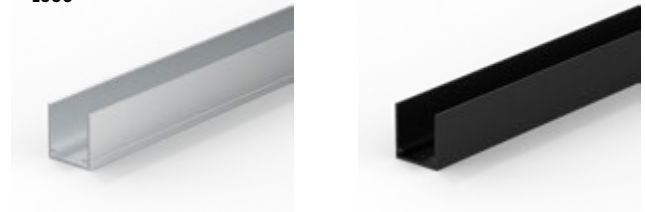
ORDERING INFORMATION		
MODEL	FINISH	LENGTH
63S1515X	5AP Silver	0030 30mm (1.18")
	2AP Black	1000 1000mm (39.37")
63S1515X		



30



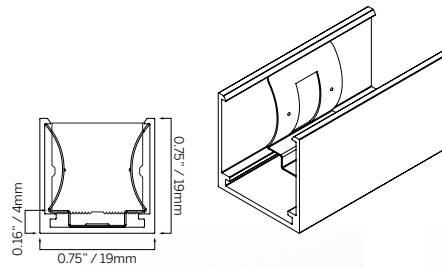
1000



DRIVERS

TYPE Locking profile
MOUNTING Surface mount

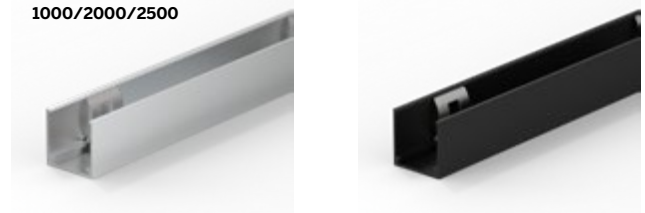
ORDERING INFORMATION		
MODEL	FINISH	LENGTH
63S1515X	5LP Silver	0035 35mm (1.38")
	2LP Black	1000 1000mm (39.37")
		2000 2000mm (78.74")
		2500 2000mm (98.43")
63S1515X		



35

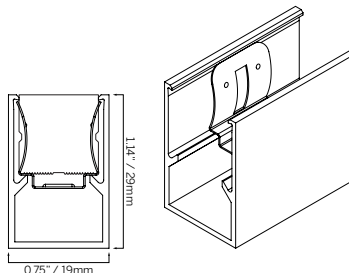


1000/2000/2500



TYPE Deep Self Locking Profile
MOUNTING Surface mount

ORDERING INFORMATION		
MODEL	FINISH	LENGTH
63S1515X	5LPC Silver	0035 35mm (1.38")
	2LPC Black	1000 1000mm (39.37")
63S1515X		



35



1000



FLEX 15x15 MULTI

0.6x0.6"

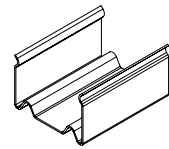
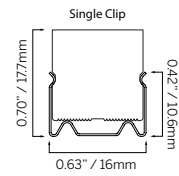
ACCESSORIES

STATIC WHITE
FREE CUT
TUNABLE WHITE

TYPE Stainless Mounting Clip
MOUNTING Surface mount

ORDERING INFORMATION

MODEL	FINISH	LENGTH
63S1515H	5SC Silver 2SC Black	0020 20mm (0.79") 1000 1000mm (39.37")
63S1515H		



DRIVERS
IES FILES
ACCESSORIES

TYPE Stainless Bendable Profile
MOUNTING Surface mount

ORDERING INFORMATION

MODEL	FINISH	LENGTH
63S1515X	5SC Silver 2SC Black	1000 1000mm (39.37")
63S1515X		1000

