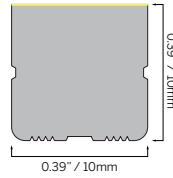
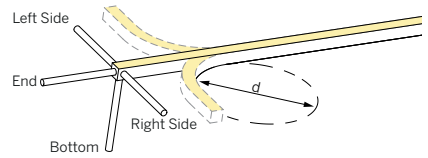


# FLEX 10x10 HORIZONTAL

0.39x0.39"



Horizontal Bending



SPECIFICATION	
<b>MATERIAL</b>	Silicone
<b>MOUNTING</b>	Surface
<b>IP RATING</b>	IP67, IP20
<b>BINNING</b>	3 Step
<b>LIFETIME (L70)</b>	50,000hrs based on LM-80 & TM-21 applicable test data
<b>DRIVER REQUIREMENT</b>	24VDC Constant voltage
<b>PROTECTION</b>	UV, flame, salt and chlorine resistant
<b>WARRANTY</b>	5 Years

## DRIVERS STATIC WHITE (CRI >90 Ra)

SPECIFICATION (MINIMUM BEND DIAMETER >3.9" / 100 mm)

DRIVER OPTIONS (See driver page for details)	
D010 = eldoLED, 10%, 0-10V dimming, 120-277V	DALI-DT6 = eldoLED DALI (DT6), 0.1% dimming, 120-277V
EL96 = eldoLED 24V, 0.1% 0-10V dimming, 120-277V	UNV96-WL = 0-10V / Phase Dim 96W Wet Location, 1% dimming, 120-277V
DPH = Phase Dimming, 1% dimming, 120V only	
L3D0E = Lutron Hi-lume Premier 0.1% EcoSystem, 120-277V	UNV384-WL = 0-10V / Phase Dim 384W Wet Location, 1% dimming, 120-277V

Cut Interval	DELIVERED LUMENS lm/ft							
	1800K	2400K	2700K	3000K	3500K	4000K	6000K	
S05 50 mm (2")	60	78	85	91	93	96	94	
S10 50 mm (2")	115	151	165	177	180	186	183	

ORDERING INFORMATION									
MODEL	JACKET	CCT	LED TYPE	CABLE ENTRY	IP RATING	CABLE LENGTH	LENGTH	DRIVERS	
<b>63S1010H</b> Flex 10x10 Horizontal	1 White	<b>C18</b> 1800K	<b>S05</b> 5 W/m (8m max.) 1.5 W/ft (26.2ft max.)	<b>E</b> End <b>B</b> Bottom <b>SL</b> Side Left <b>SR</b> Side Right	<b>7</b> IP67 <b>2</b> IP20	<b>003</b> 0.3m (1ft)	.XXXX Length in inches		<b>D010</b> <b>EL96</b> <b>DPH</b> <b>L3D0E</b> <b>DALI-DT6</b> <b>UNV96-WL</b> <b>UNV384-WL</b>
		<b>C24</b> 2400K				<b>010</b> 1m (3.3ft)			
		<b>C27</b> 2700K	<b>030</b> 3m (9.8ft)						
		<b>C30</b> 3000K	<b>050</b> 5m (16.4ft)						
		<b>C35</b> 3500K	<b>100</b> 10m (32.8ft)						
		<b>C40</b> 4000K							
<b>C60</b> 6000K									
<b>63S1010H</b>	<b>1</b>								

## STATIC WHITE - HIGH OUTPUT (CRI >90 Ra)

SPECIFICATION (MINIMUM BEND DIAMETER >3.9" / 100 mm)

DRIVER OPTIONS (See driver page for details)	
D010 = eldoLED, 10%, 0-10V dimming, 120-277V	DALI-DT6 = eldoLED DALI (DT6), 0.1% dimming, 120-277V
EL96 = eldoLED 24V, 0.1% 0-10V dimming, 120-277V	UNV96-WL = 0-10V / Phase Dim 96W Wet Location, 1% dimming, 120-277V
DPH = Phase Dimming, 1% dimming, 120V only	
L3D0E = Lutron Hi-lume Premier 0.1% EcoSystem, 120-277V	UNV384-WL = 0-10V / Phase Dim 384W Wet Location, 1% dimming, 120-277V

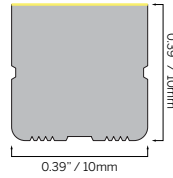
Cut Interval	DELIVERED LUMENS lm/ft							
	1800K	2400K	2700K	3000K	3500K	4000K	6000K	
S10 50 mm (2")	133	174	188	205	209	208	212	

ORDERING INFORMATION									
MODEL	JACKET	CCT	LED TYPE	CABLE ENTRY	IP RATING	CABLE LENGTH	LENGTH	DRIVERS	
<b>63S1010HOH</b> Flex 10x10 Horizontal High Output	1 White	<b>C18</b> 1800K	<b>S10</b> 10 W/m (5m max.) 3 W/ft (16.4ft max.)	<b>E</b> End <b>B</b> Bottom <b>SL</b> Side Left <b>SR</b> Side Right	<b>7</b> IP67 <b>2</b> IP20	<b>003</b> 0.3m (1ft)	.XXXX Length in inches		<b>D010</b> <b>EL96</b> <b>DPH</b> <b>L3D0E</b> <b>DALI</b> <b>UNV96-WL</b> <b>UNV384-WL</b>
		<b>C24</b> 2400K				<b>010</b> 1m (3.3ft)			
		<b>C27</b> 2700K	<b>030</b> 3m (9.8ft)						
		<b>C30</b> 3000K	<b>050</b> 5m (16.4ft)						
		<b>C35</b> 3500K	<b>100</b> 10m (32.8ft)						
		<b>C40</b> 4000K							
<b>C60</b> 6000K									
<b>63S1010HOH</b>	<b>1</b>		<b>S10</b>						

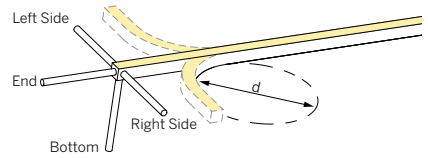
# FLEX 10x10 HORIZONTAL

0.39x0.39"

- STATIC WHITE
- FREE CUT
- TUNABLE WHITE
- WARM DIM



Horizontal Bending



SPECIFICATION	
<b>MATERIAL</b>	Silicone
<b>MOUNTING</b>	Surface
<b>IP RATING</b>	IP67, IP20
<b>BINNING</b>	3 Step
<b>LIFETIME (L70)</b>	50,000hrs based on LM-80 & TM-21 applicable test data
<b>DRIVER REQUIREMENT</b>	24VDC Constant voltage
<b>PROTECTION</b>	UV, flame, salt and chlorine resistant
<b>WARRANTY</b>	5 Years

**DRIVERS** **STATIC WHITE FREE CUT (CRI >90 Ra)**  
 SPECIFICATION (MINIMUM BEND DIAMETER >3.9" / 100 mm)

- IES FILES

DRIVER OPTIONS (See driver page for details)	
D010 = eldoLED, 10%, 0-10V dimming, 120-277V	DALI-DT6 = eldoLED DALI (DT6), 0.1% dimming, 120-277V
EL96 = eldoLED 24V, 0.1% 0-10V dimming, 120-277V	UNV96-WL = 0-10V / Phase Dim 96W Wet Location, 1% dimming, 120-277V
DPH = Phase Dimming, 1% dimming, 120V only	
L3D0E = Lutron Hi-lume Premier 0.1% EcoSystem, 120-277V	UNV384-WL = 0-10V / Phase Dim 384W Wet Location, 1% dimming, 120-277V

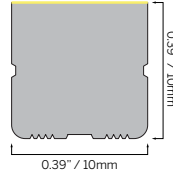
Cut Interval	DELIVERED LUMENS lm/ft							
	1800K	2400K	2700K	3000K	3500K	4000K	6000K	
SF05	Free Cut	52	68	79	80	82	88	83
SF10	Free Cut	101	132	154	156	159	171	161

- ACCESSORIES

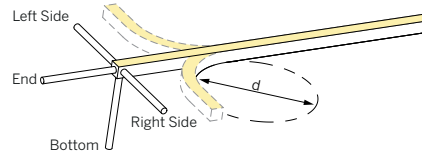
ORDERING INFORMATION									
MODEL	JACKET	CCT	LED TYPE	CABLE ENTRY	IP RATING	CABLE LENGTH	LENGTH	DRIVERS	
<b>63S1010H</b> Flex 10x10 Horizontal	1 White	<b>C18</b> 1800K	<b>SF05</b> 5 W/m (7.5m max.) 1.5 W/ft (24.6ft max.) <b>SF10</b> 10 W/m (5m max.) 3 W/ft (16.4ft max.)	<b>E</b> End <b>B</b> Bottom <b>SL</b> Side Left <b>SR</b> Side Right	<b>7</b> IP67 <b>2</b> IP20	<b>003</b> 0.3m (1ft)	.XXXX Length in inches		<b>D010</b> <b>EL96</b> <b>DPH</b> <b>L3D0E</b> <b>DALI-DT6</b> <b>UNV96-WL</b> <b>UNV384-WL</b>
		<b>C24</b> 2400K				<b>010</b> 1m (3.3ft)			
		<b>C27</b> 2700K				<b>030</b> 3m (9.8ft)			
		<b>C30</b> 3000K				<b>050</b> 5m (16.4ft)			
		<b>C35</b> 3500K				<b>100</b> 10m (32.8ft)			
		<b>C40</b> 4000K							
<b>C60</b> 6000K									
<b>63S1010H</b>	<b>1</b>								

# FLEX 10x10 HORIZONTAL

0.39x0.39"



Horizontal Bending



SPECIFICATION	
<b>MATERIAL</b>	Silicone
<b>MOUNTING</b>	Surface
<b>IP RATING</b>	IP67, IP20
<b>BINNING</b>	3 Step
<b>LIFETIME (L70)</b>	50,000hrs based on LM-80 & TM-21 applicable test data
<b>DRIVER REQUIREMENT</b>	24VDC Constant voltage
<b>PROTECTION</b>	UV, flame, salt and chlorine resistant
<b>WARRANTY</b>	5 Years

**DRIVERS** **TUNABLE WHITE (CRI >90 Ra)**  
 SPECIFICATION (MINIMUM BEND DIAMETER >3.9" / 100 mm)

**DRIVER OPTIONS (See Driver page for details)**

DALI-DT6 = eldoLED DALI (DT6), 0.1% dimming, 120-277V
DALI-DT8 = eldoLED DALI (DT8), 0.1% dimming, 120-277V

	DELIVERED LUMENS lm/ft							
	Cut Interval	1800K	2400K	2700K	3000K	3500K	4000K	6000K
<b>CT08</b>	50 mm (2")	70	98	107	113	114	115	112

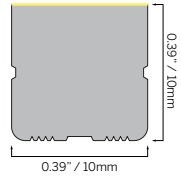
**ACCESSORIES** **ORDERING INFORMATION**

MODEL	JACKET	CCT (LOW)	CCT (HIGH)	LED TYPE*	CABLE ENTRY	IP RATING	CABLE LENGTH	LENGTH	DRIVERS
<b>63S1010H</b> Flex 10x10 Horizontal	<b>1</b> White	<b>C18</b> 1800K	<b>24</b> 2400K	<b>CT08</b> 2x8 W/m (5m max.) 2x2.4 W/ft (16.4ft max.) <small>* Rated wattage is maximum wattage per channel. Combined power must also not exceed this value.</small>	<b>E</b> End <b>B</b> Bottom <b>SL</b> Side Left <b>SR</b> Side Right	<b>7</b> IP67 <b>2</b> IP20	<b>003</b> 0.3m (1ft)	<b>.XXXX</b> Length in inches	<b>DALI-DT6</b> <b>DALI-DT8</b>
		<b>C24</b> 2400K	<b>27</b> 2700K				<b>010</b> 1m (3.3ft)		
		<b>C27</b> 2700K	<b>30</b> 3000K				<b>030</b> 3m (9.8ft)		
		<b>C30</b> 3000K	<b>35</b> 3500K				<b>050</b> 5m (16.4ft)		
		<b>C35</b> 3500K	<b>40</b> 4000K				<b>100</b> 10m (32.8ft)		
<b>63S1010H</b>	<b>1</b>			<b>CT08</b>					

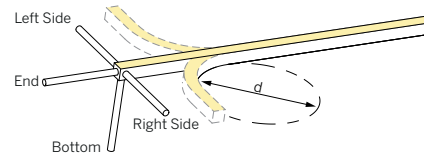
# FLEX 10x10 HORIZONTAL

0.39x0.39"

- STATIC WHITE
- FREE CUT
- TUNABLE WHITE
- WARM DIM



Horizontal Bending



SPECIFICATION	
<b>MATERIAL</b>	Silicone
<b>MOUNTING</b>	Surface
<b>IP RATING</b>	IP67, IP20
<b>BINNING</b>	3 Step
<b>LIFETIME (L70)</b>	50,000hrs based on LM-80 & TM-21 applicable test data
<b>DRIVER REQUIREMENT</b>	24VDC Constant voltage
<b>PROTECTION</b>	UV, flame, salt and chlorine resistant
<b>WARRANTY</b>	5 Years

**DRIVERS** **WARM DIM (CRI >90 Ra)**  
 SPECIFICATION (MINIMUM BEND DIAMETER >3.9" / 100 mm)

**DRIVER OPTIONS (See driver page for details)**

MAGSDM96-WD = 0-10V / Phase Dim 96W, 0.1% CCR Dimming for Warm Dim, 120-277V (Phase - 120V only)
--

	DELIVERED LUMENS lm/ft		
	Cut Interval	2700K	3000K
<b>10R</b>	50 mm (2")	125	135

**ACCESSORIES** ORDERING INFORMATION

MODEL	JACKET	CCT	LED TYPE	CABLE ENTRY	IP RATING	CABLE LENGTH	LENGTH	DRIVERS
<b>63S1010H</b> Flex 10x10 Horizontal	<b>1</b> White	<b>C2718W</b> 2700-1800K	<b>10R</b> 10 W/m (5m max.) 3 W/ft (16.4ft max.)	<b>E</b> End	<b>7</b> IP67	<b>003</b> 0.3m (1ft)	<b>.XXXX</b> Length in inches	<b>MAGSDM96-WD</b>
		<b>C3018W</b> 3000-1800K		<b>B</b> Bottom	<b>2</b> IP20	<b>010</b> 1m (3.3ft)		
				<b>SL</b> Side Left		<b>030</b> 3m (9.8ft)		
				<b>SR</b> Side Right		<b>050</b> 5m (16.4ft)		
						<b>100</b> 10m (32.8ft)		
<b>63S1010H</b>	<b>1</b>		<b>10R</b>				<b>MAGSDM96-WD</b>	

# FLEX 10x10 HORIZONTAL

0.39x0.39"

## ACCESSORIES

STATIC WHITE

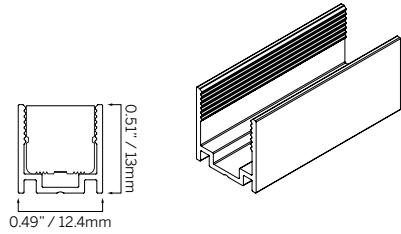
**TYPE** Aluminum profile  
**MOUNTING** Surface mount

FREE CUT

ORDERING INFORMATION		
MODEL	FINISH	LENGTH
<b>63S1010X</b>	<b>5AP</b> Silver	<b>0030</b> 30mm (1.18")
	<b>2AP</b> Black	<b>1000</b> 1000mm (39.37")
		<b>2000</b> 2000mm (78.74")
<b>63S1010X</b>		

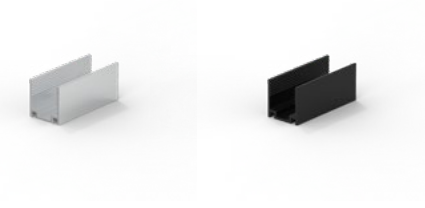
TUNABLE WHITE

WARM DIM

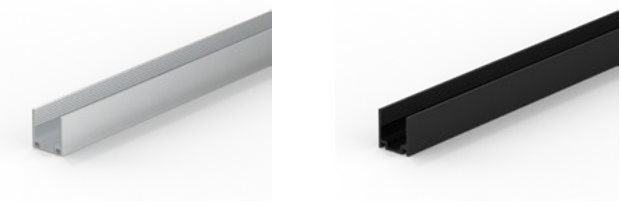


DRIVERS

30



1000/2000

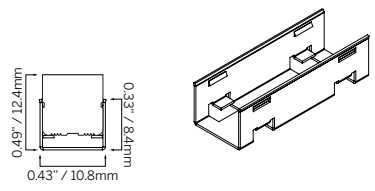


IES FILES

**TYPE** Stainless Mounting Clip  
**MOUNTING** Surface mount

ACCESSORIES

ORDERING INFORMATION		
MODEL	FINISH	LENGTH
<b>63S1010X</b>	<b>5SC</b> Silver	<b>0030</b> 30mm (1.18")
	<b>2SC</b> Black	
<b>63S1010X</b>		<b>0030</b>



**TYPE** Stainless Bendable Profile  
**MOUNTING** Surface mount

ORDERING INFORMATION		
MODEL	FINISH	LENGTH
<b>63S1010X</b>	<b>5SC</b> Silver	<b>1000</b> 1000mm (39.37")
	<b>2SC</b> Black	
<b>63S1010X</b>		<b>1000</b>

