

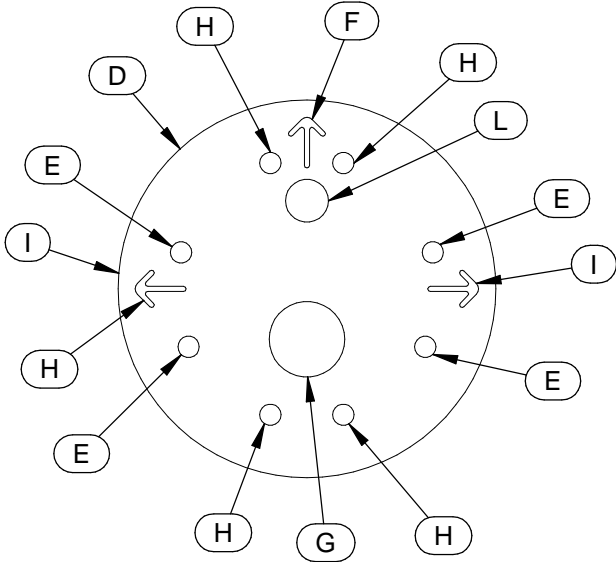
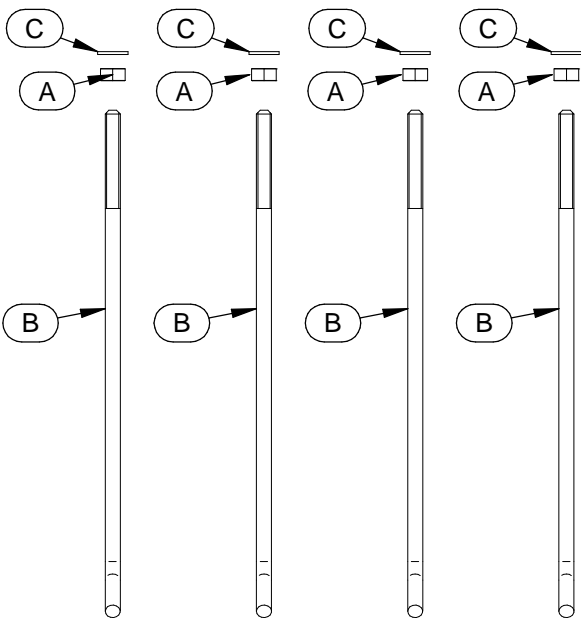
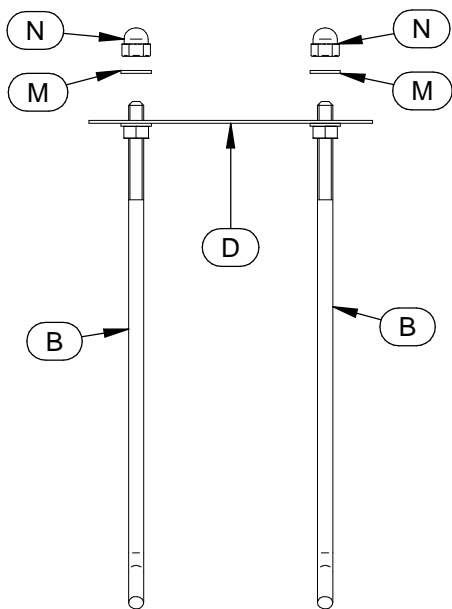
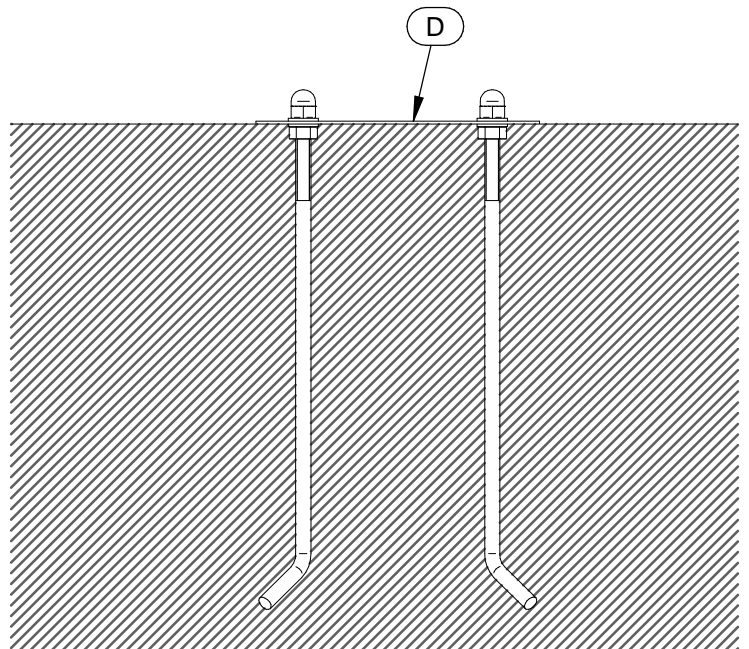
 WARNING: INSTALL PRODUCT IN ACCORDANCE WITH LOCAL AND NATIONAL ELECTRICAL CODES BY A QUALIFIED ELECTRICIAN	 WARNING: FAILURE TO COMPLY WITH THE INSTALLATION INSTRUCTIONS MAY RESULT IN DEATH OR SEVERE INJURY.	 WARNING: READ ALL SAFETY INSTRUCTIONS INCLUDED WITH LUMINAIRE BEFORE INSTALLING LUMINAIRE. SAVE INSTRUCTIONS FOR FUTURE USE.
CAUTION: THIS IS AN ELECTRONIC DEVICE. CARE MUST BE TAKEN DURING STORAGE AND HANDLING. STORE IN A CLEAN, COOL AND DRY LOCATION. ELECTROSTATIC DISCHARGE (ESD) CAN HARM THIS PRODUCT. AVOID STATIC DISCHARGE WHILE HANDLING THIS PRODUCT.		CAUTION: INTER-LUX IS NOT RESPONSIBLE FOR THE STRUCTURAL INTEGRITY OF THE BUILDING TO SUPPORT THE LUMINAIRE. ADDITIONAL BACKING MAY BE REQUIRED.
LOCATE AND REVIEW ANY CONSTRUCTION PLANS AND INTER-LUX RECORD DRAWINGS FOR ALL FIXTURE RUNS. IT IS RECOMMENDED TO LOCARE AND LAY OUT ALL COMPONENTS FOR EACH FIXTURE "RUN". A FIXTURE RUN TYPICALLY CONSISTS OF JOINERS, LENGTHS OF HOUSING, AND ENDCAPS. BE SURE TO IDENTIFY ALL CORRECT LENGTHS FOR EACH FIXTURE RUN.		

INSTALLATION INSTRUCTIONS

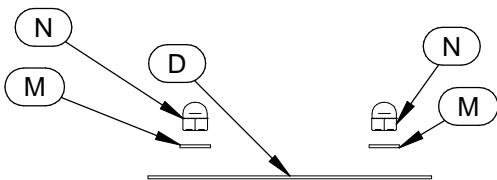
 <p>- Asymmetric (single) emission fixture: Holes (E) must be used for the rods. The arrow (F) shows the direction of the light emission, and the hole (G) must be used for the mains cable exit.</p> <p>- Round (double) emission fixture: Holes (H) must be used for the rods. The arrows (I) show the directions of the light emission, and the hole (L) must be used for the mains cable exit.</p>	 <p>Place the rods in the appropriate holes of the template, depending on the fixture (Asymmetric or Round emission). Screw the nuts (A) to the rods (B) and insert the washers (C).</p>
---	--



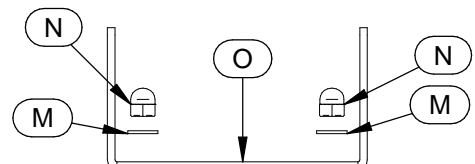
Lock the rods (B) on the jig (D) through the cap nuts (N). The washers (M) must be placed between the jig and the cap nuts.



Pour the concrete or dip the anchor bolts into the concrete until the bottom of the jig (D) touches the concrete



Remove the nuts (N), the washers (M) and the jig (D)



Place the mounting bracket (O) (provided with the fixture), and lock it with the cap nuts (N). The washers (M) must be placed between the bracket and the cap nuts.

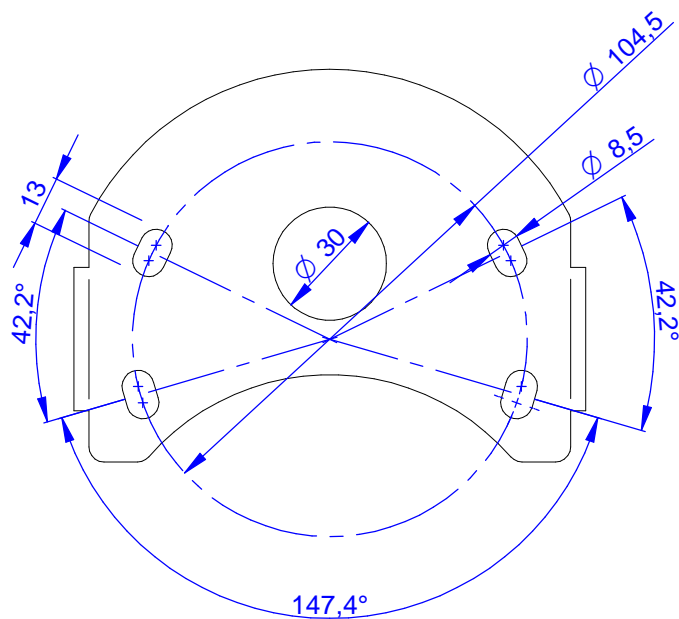
THIS PRODUCT MUST BE INSTALLED IN ACCORDANCE WITH THE APPLICABLE INSTALLATION CODE BY A PERSON FAMILIAR WITH THE CONSTRUCTION AND OPERATION OF THE PRODUCT AND THE HAZARDS INVOLVED

MOUNTING INSTRUCTIONS

READ ALL OF THESE INSTRUCTIONS BEFORE INSTALLING FIXTURES

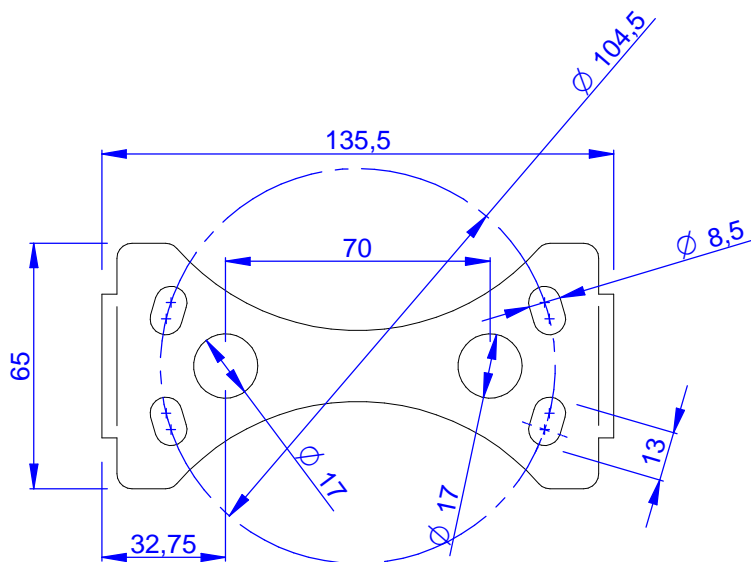
- CAUTION: USE ONLY WITH CLASS 2 POWER UNIT
- Keep all of the instructions for future reference
- Turn off power before installing fixture
- Installation is to be performed by a qualified electrician only
- All installations must conform to the National Electrical Code as well as all local jurisdictional codes and regulations
- Any modification of the luminaire will void any and all written or implied warranties
- The manufacture accepts no responsibility for damage to persons or property arising through improper use or installation

Bracket for Ryo AE (Asymmetric/Single Emission)
(Included with the fixture)



Units conversion:
13mm (0.512")
104.5mm (4.114")
8.5mm (0.335")
30mm (1.181")

Bracket for Ryo RE (Round/Double Emission)
(Included with the fixture)



Units conversion:
135.5mm (5.335")
65mm (2.559")
70mm (2.756")
8.5mm (0.335")
32.75mm (1.289")
17mm (0.669")
13mm (0.512")