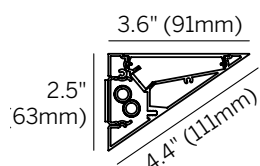
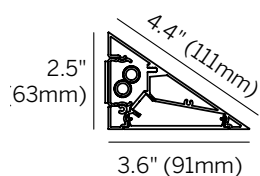


Ordering Information

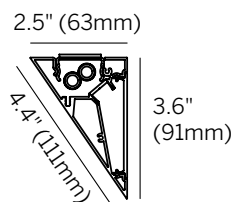
	SM	S					MPL		
Model	Fixation	Pattern	Length	Power ¹	CRI/CCT ²	Driver ³	Lens	Finish	Options
WG-WCWL (up light)	SM	S	24 36 48 60 XX	XL L M	927 930 935 940	X S D010 DPH L3DAE L3DOE EL96	MPL	W (std) B S F	EM



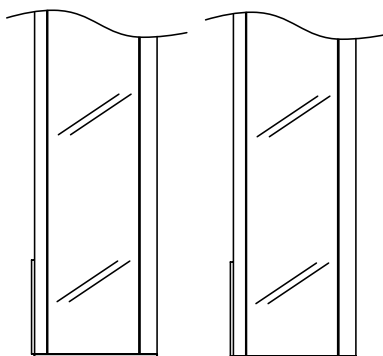
Wall Mounted Uplight



Wall Mounted Down Light



Ceiling Mounted Wall Wash



3.6" (91mm)

Uplight (WCWLU)

3.6" (91mm)

Downlight or
Wall Wash
(WCWL)

Luminaire

- Continuous surface wall, ceiling or mullion mounted cove system that delivers an even wash of directed light to the ceiling above or the floor below, and redirected light to softly illuminate the wall behind the fixture.
- WedgeCove can be mounted as a Wall Mounted Uplight (WCWLU), Wall Mounted Down Light or Ceiling Mounted Wall Wash (WCWL).
- Light source positioned for optimum vertical spread of illumination.
- Extruded aluminum housing (powdercoat painted), easily installed internal LED tray assembly. Remote driver. Field replaceable LED boards.
- Satin clear diffuser for high efficiency and soft edge beam without striations. Efficacy up to 82 lumens per watt (delivered).
- 90+ CRI, 3 Step MacAdam.
- L70 (TM21 Projected 85C) Static White 50,000 hours.
- ETL and ETL-C for dry, damp or wet locations.

Fixation

- SM = Surface Mount to wall, ceiling or mullion

Pattern

- S = Straight run

Length

- 24 = 24.0" (609.6mm)
- 36 = 36.0" (914.4mm)
- 48 = 48.0" (1219.2mm)
- 60 = 60.0" (1524mm)
- XX = Specify inches to the nearest 0.25 (i.e. 72.25")
Max 1 piece 96" - nonstandard

Power¹

- XL = 1.5 W/ft extra low power (24V)
- L = 3.0 W/ft low power (24V)
- M = 6.5 W/ft mid power (24V)

CRI/CCT (90+ CRI)²

- 927 = 2700K
- 930 = 3000K
- 935 = 3500K
- 940 = 4000K

Driver (remote)³

- X = No driver, ordered separately
- S = Standard, non-dim driver 120-277V
- D010 = Osram, 10%, 0-10V dimming, 120-277V
- DPH = Phase Dimming, 1% dimming, 120V only
- L3DAE = Lutron Hi-lume 1% EcoSystem, 120-277V
- L3DOE = Lutron Hi-lume Premier 0.1% EcoSystem, 120-277V
- EL96 = Osram / EldoLED, 24V, 0.1% 0-10V Dimming

Lens

- MPL = Micro-prismatic lens (standard)

Finish

- W = White, 15% gloss, RAL 9003 (standard)
- B = Black, 15% gloss, RAL 9005
- S = Silver, 15% gloss, RAL 9006
- F = Custom finish, specify RAL code

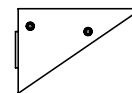
Options

- EM = Emergency LED driver (remote)

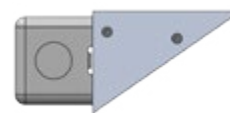
¹ Wattage shown does not include power supplies/drivers.

² See photometric data sheet for delivered lumens.

³ See power supply page for details.



End Cap (2 included)

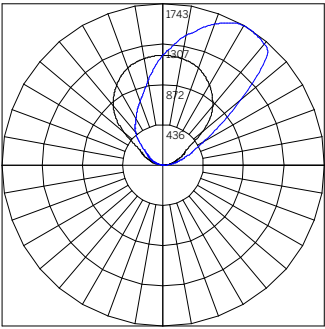


Mounts to 4" J-box (by others)

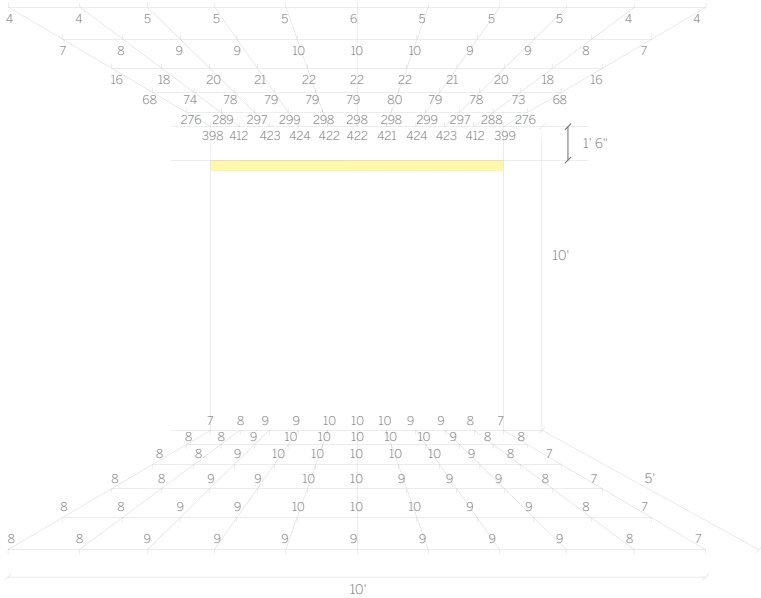
WG-WCWL-...-MPL-W				
DELIVERED LUMENS PER FOOT				
		POWER		
		XL [1.5 W/ft]	L [3 W/ft]	M [6.5 W/ft]
CCT	927	185	364	779
	930	204	400	857
	935	204	400	857
	940	213	417	893

Power Multiplier			
	XL [1.5 W/ft]	L [3 W/ft]	M [6.5 W/ft]
	0.24	0.47	1.00

CCT Multiplier			
927	930	935	940
0.91	1.00	1.00	1.04



ISOILLUMINANCE - 48" MPL M 3500K
WG-WCWL-...-S-48-M-935-...-MPL-W*



*Polar Plot and Cone of Light are applicable to part number noted; use Multiplication Factor table to approximate other models or refer to online photometry.