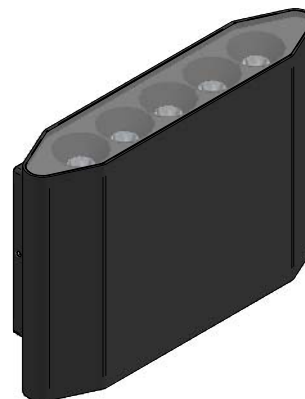
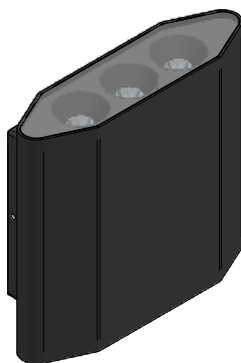
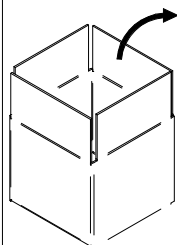


**SKIN WALL****WARNING:**

INSTALL PRODUCT IN ACCORDANCE WITH LOCAL AND NATIONAL ELECTRICAL CODES BY A QUALIFIED ELECTRICIAN

**WARNING:**

FAILURE TO COMPLY WITH THE INSTALLATION INSTRUCTIONS MAY RESULT IN DEATH OR SEVERE INJURY.

**WARNING:**

READ ALL SAFETY INSTRUCTIONS INCLUDED WITH LUMINAIRE BEFORE INSTALLING LUMINAIRE. SAVE INSTRUCTIONS FOR FUTURE USE.

CAUTION:

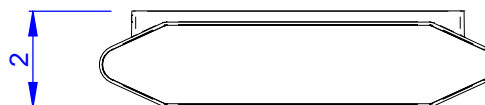
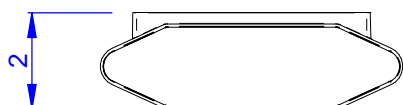
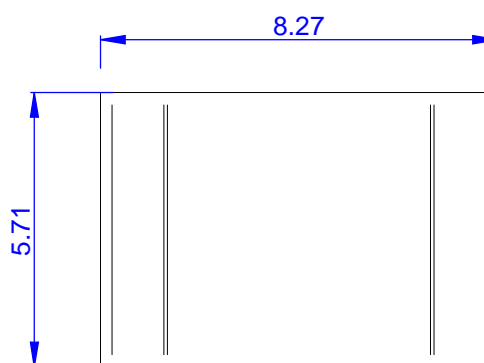
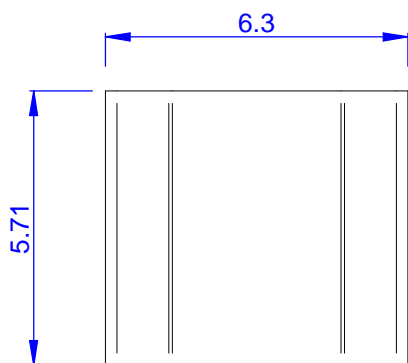
THIS IS AN ELECTRONIC DEVICE. CARE MUST BE TAKEN DURING STORAGE AND HANDLING. STORE IN A CLEAN, COOL AND DRY LOCATION. ELECTROSTATIC DISCHARGE (ESD) CAN HARM THIS PRODUCT. AVOID STATIC DISCHARGE WHILE HANDLING THIS PRODUCT.

CAUTION:

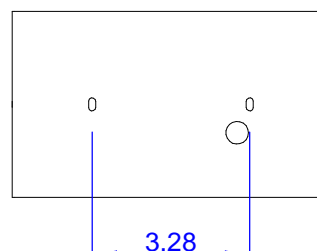
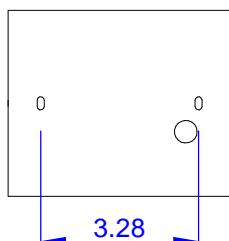
INTER-LUX IS NOT RESPONSIBLE FOR THE STRUCTURAL INTEGRITY OF THE BUILDING TO SUPPORT THE LUMINAIRE. ADDITIONAL BACKING MAY BE REQUIRED.

LOCATE AND REVIEW ANY CONSTRUCTION PLANS AND INTER-LUX RECORD DRAWINGS FOR ALL FIXTURE RUNS. IT IS RECOMMENDED TO LOCARE AND LAY OUT ALL COMPONENTS FOR EACH FIXTURE "RUN". A FIXTURE RUN TYPICALLY CONSISTS OF JOINERS, LENGTHS OF HOUSING, AND ENDCAPS. BE SURE TO IDENTIFY ALL CORRECT LENGTHS FOR EACH FIXTURE RUN.

		SIZE	WATTAGE
SKIN WALL OPTICS	SINGLE EMISSION	6.3"	7W
	DUAL EMISSION	8.3"	11W
	DUAL EMISSION	6.3"	14W
SKIN WALL FROSTED	SINGLE EMISSION	6.3"	8W
	DUAL EMISSION	8.3"	11W
	DUAL EMISSION	6.3"	16W
SKIN WALL WALLWASHER	SINGLE EMISSION	8.3"	11W
	DUAL EMISSION	8.3"	21W

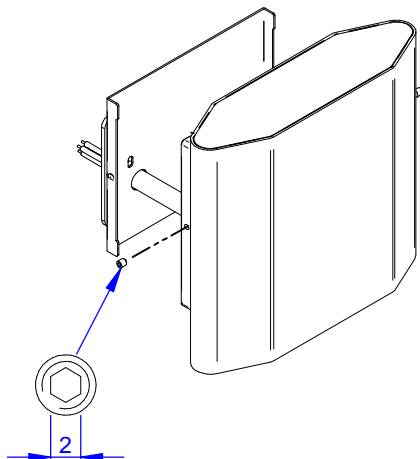
DIMENSIONS

Mounting bracket
Suitable for installation
on a 2x4 junction box



INSTALLATION INSTRUCTIONS

①

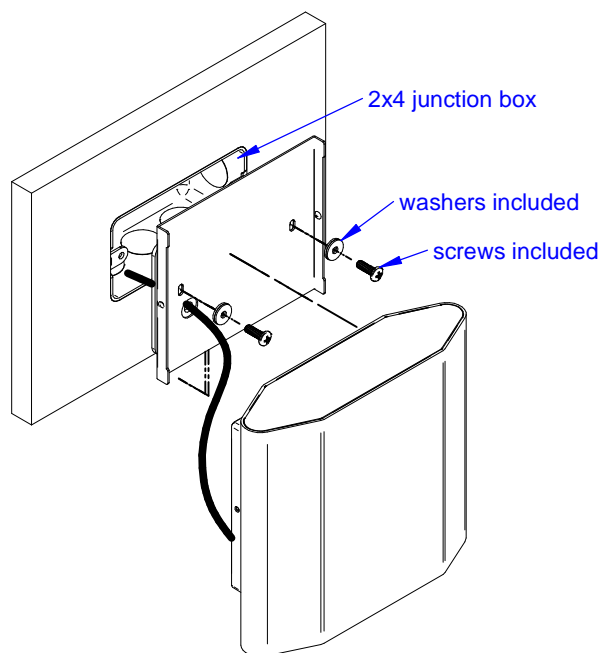


Loosen the set screw and remove the mounting bracket.

Recommended tool: 2mm hex key

Skin Wall single emission can be installed with emission in both upward and downward direction. Wallwasher version is equipped with labels indicating the installation direction

②



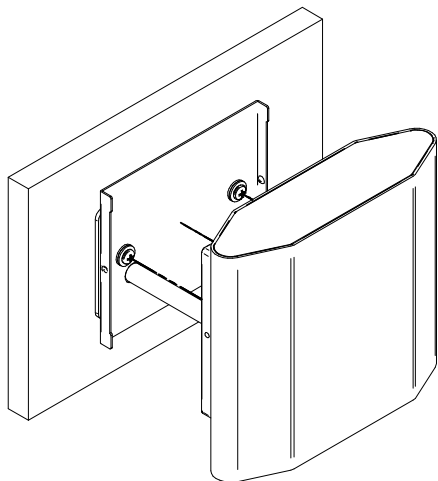
Make the wirings as shown on page 3. Install the mounting bracket on a 2x4 junction box. Connectors for splices included.

Warning!

Washers have a gasket on a side. The gasket should be placed toward the bracket.

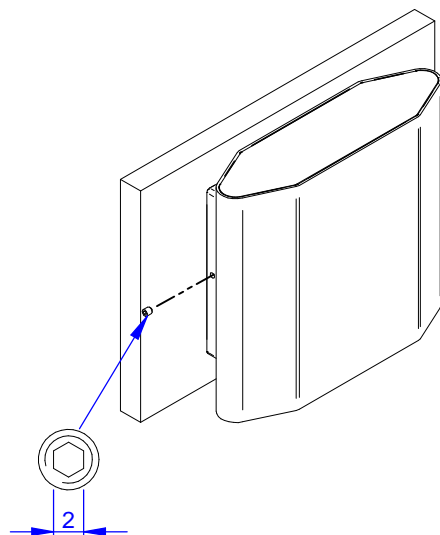
Bracket as well have a gasket on the back to seal the j-box.

③



Install the fixture on the mounting bracket

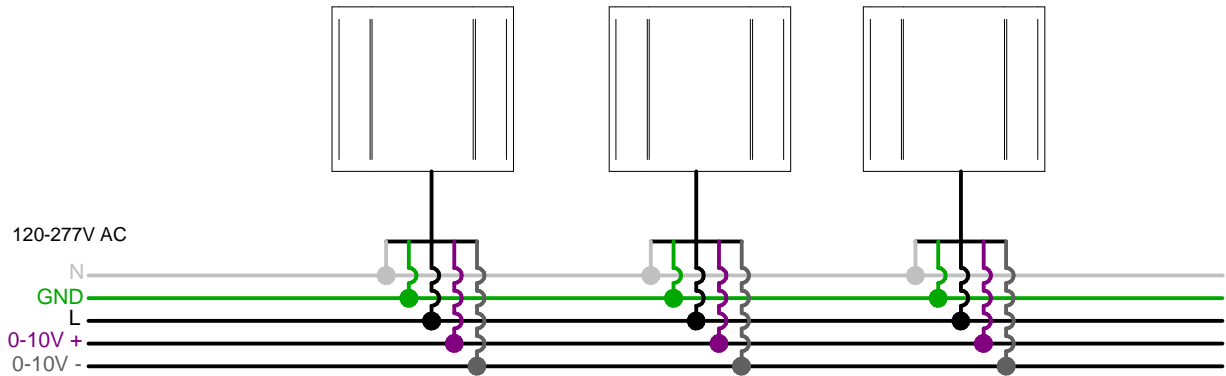
④



Tighten the set screw.

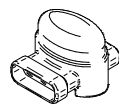
Recommended tool: 2mm hex key

WIRING DIAGRAM

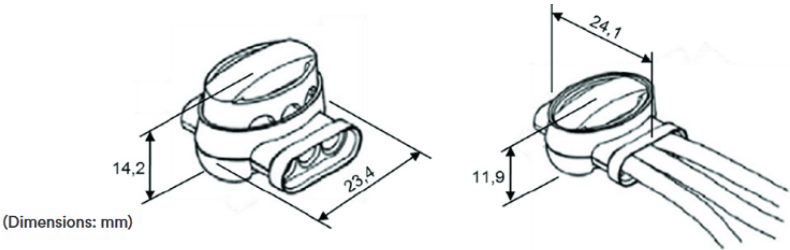


Cable Colors	Pole
Black wire	L
White wire	N
Green wire	Ground
Purple wire	0-10V +
Grey wire	0-10V -

1. Insert 2 or 3 unstripped wires completely into the connector and check their position by looking through the translucent connector body.
2. Hold the tool perpendicular to the wires and make the connection by driving the cap down flush with the top edge of the connector body.



5pcs included



THIS PRODUCT MUST BE INSTALLED IN ACCORDANCE WITH THE APPLICABLE INSTALLATION CODE BY A PERSON FAMILIAR WITH THE CONSTRUCTION AND OPERATION OF THE PRODUCT AND THE HAZARDS INVOLVED

MOUNTING INSTRUCTIONS

READ ALL OF THESE INSTRUCTIONS BEFORE INSTALLING FIXTURES

- Keep all of the instructions for future reference
- Turn off power before installing fixture
- Installation is to be performed by a qualified electrician only
- All installations must conform to the National Electrical Code as well as all local jurisdictional codes and regulations
- Any modification of the luminaire will void any and all written or implied warranties
- The manufacture accepts no responsibility for damage to persons or property airing through improper use or installation