

# 2.4" ProTools

WG-60RPTDL-SR

# Installation Instructions

# Downlight

Round Cylinder  
Suspended Rigid Stem

**IMPORTANT:** Fixture(s) must be wired in series! Refer to driver wiring document

Luminaires must be installed by a qualified electrician. Check with local and national codes for proper installation.



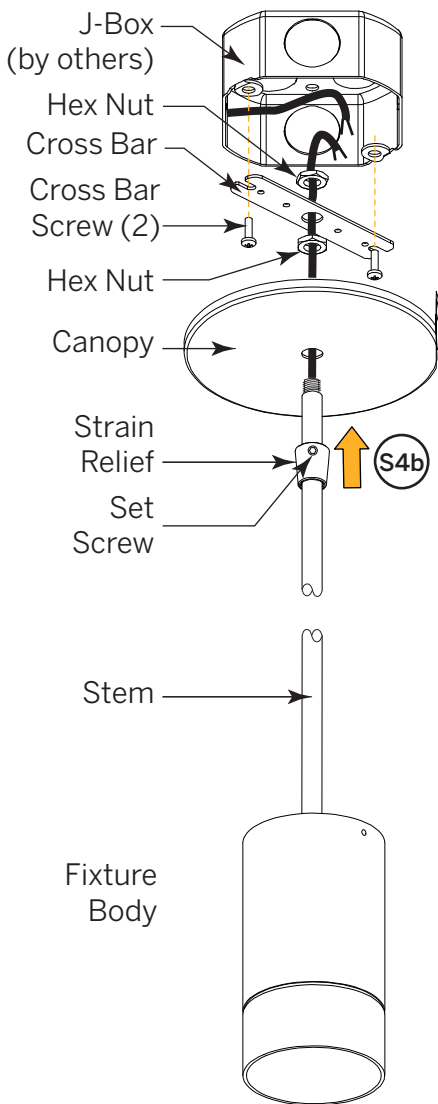
To prevent electrical shock disconnect electrical supply before installation or servicing.

**Never connect a live fixture!!!**

Contractor is responsible for adequately reinforcing walls and/or ceilings to support fixture weight. Provide blocking when necessary.

For Accessible Ceilings Only\*

Remote Driver



## Step 1

### Confirm Power Supply is Off!

Unpack luminaire unit. Remote drivers and housings are supplied by Inter-lux.

## Step 2

### Ceiling Preparation

Mark location, cut opening, and mount J-Box. Pull power (and control) cable(s) inside. Attach Cross Bar with supplied screws.

## Step 3

### Mounting

- a** From Fixture Body, feed cable through stem. If stem supplied in multiple pieces, feed cable through first section and **then** through second section. Now join first to second. Repeat if needed. Screw Stem assembly to Fixture Body.
- b** Slide Strain Relief onto top of stem. Follow with Canopy. Screw on Hex Nut on top of Canopy.
- c** Screw top of Stem to Cross Bar, followed by Hex Nut to secure.

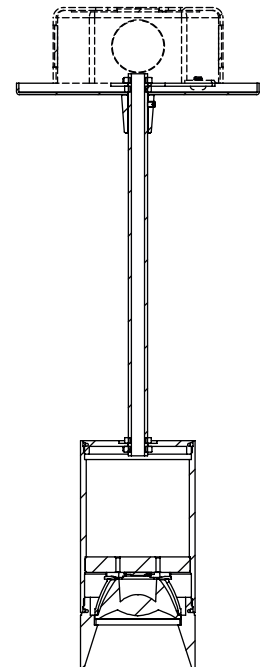
## Step 4

### Connect Electrical & Secure

- a** Inside J-Box, connect power (and control) wire(s) using suitable connectors.
- b** Slide Canopy and Strain Relief up the Stem to ceiling. Lock in place with Set Screw.

## Included in Box

- (1) Fixture Body with connected cable
- (1) Cross Bar
- (2) Cross Bar Screws
- (2) Hex Nuts
- (1-3) Stem(s) as specified
- (1) Canopy
- (1) Strain Relief with Set Screw



\*Alternatively, wire or cable may be fed from an accessible driver to the fixture in a non-accessible ceiling.

Need Help?