



inter•lux
2024 News



inter•lux

tools for lighting

Trade shows are a great way to meet with clients face-to-face and talk about the many new and improved products from Inter-lux.

Unfortunately, we cannot show all of them in this venue, so we created this small brochure to help you navigate, so you can recall, research and hopefully share what you have seen here.

Thank you for your time and your feedback.



inter•lux

tools for lighting

Lighting is about creating an environment that uses light as the main medium of expression. It means having one's work blend seamlessly with the architecture, often at the risk of not being seen. It's about giving definition to a space.

Inter-lux has curated a collection of lighting products that represents the best in design. Inter-lux is sensitive to the demands of the market. We know exactly how you need your product: on time, on budget, and all backed up with only the very best in pre and post order service.

Inter-lux – tools for lighting

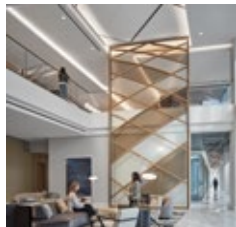


whitegoods

Whitegoods has developed a range of minimal lighting tools, utilizing the form factor of LED to reduce even further their visual impact.

Of course, they all hold true to our design principles:

- Reduction of detail
- Seamless architectural integration
- Logical, modular systems and families of products
- Ease of specification, installation and maintenance



whitegoods





whitegoods



1.5" ProTools Downlights + Cylinders

whitegoods

20 Linear Direct/Indirect
Surface Wall



20 Linear Surface



1.5" ProTools Downlight
Round Suspended Cylinder



2.4" ProTools Downlight
Round Cylinder



4" ProTools Downlight
Round Cylinder



5.5" ProTools Downlight
Round Cylinder



1.5" ProTools Downlight
Round Recessed



1.5" ProTools Adjustable
Square Recessed



1.5" ProTools Wallwash
Round Recessed

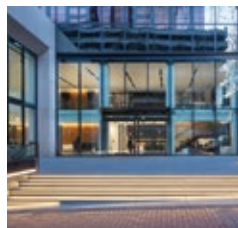
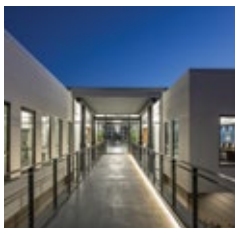


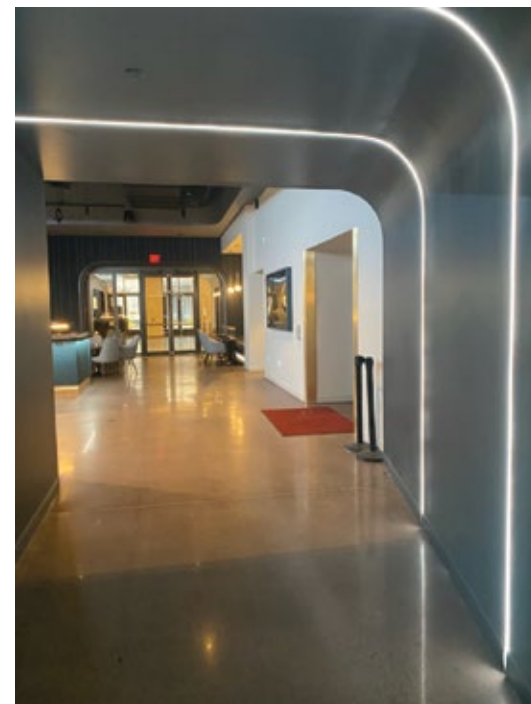
New for 2024 are interior, exterior and decorative luminaires from Linea Light.

These new designs include Skin, Diphy, Oh! and Mongolfier.

Expansions of existing product ranges, including D Wave, Periskop and Orma.

Exciting color changing, continuous linear systems; Paseo Pixel and Rubber Pixel.





Rubber RGBW





Pixel Technology

PIXEL allows the creation of dynamic lighting effects through the control of short segments of the fixture. Paseo Pixel for straight, continuous runs of color.

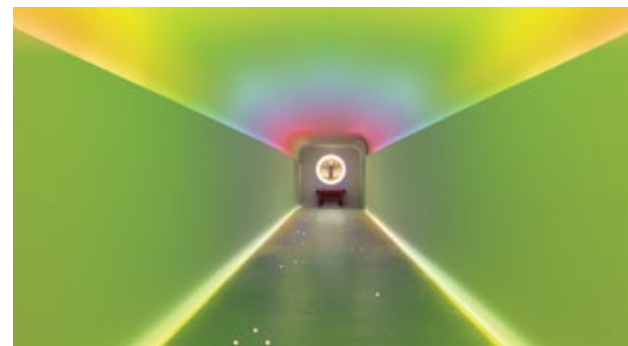
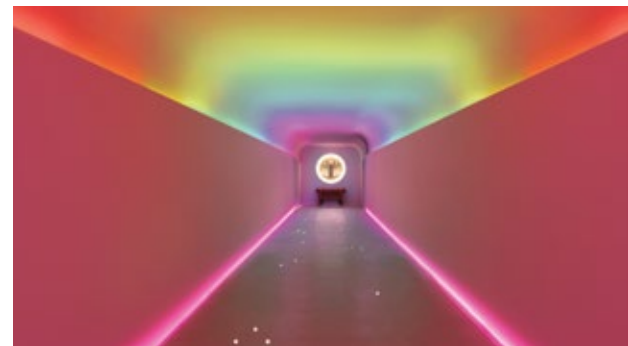




Pixel Technology

Rubber Pixel lets your creativity dictate the shape of the curveable and continuous luminaire.

Let your imagination run free!



D Wave



Orma



Paseo Pixel



Periskop



Rubber 3D Pixel



Diphy



Mongolfier



Oh!

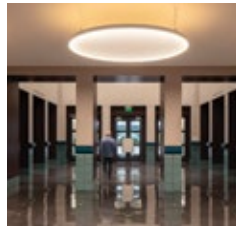


Skin



SATTLER

SATTLER pioneered the geometrically-shaped suspended luminaire that is so popular today. Providing functional illumination as well as feature aesthetics in a space, SATTLER quality is unmatched in the industry. SATTLER has expanded their offering to add more organic shapes, including some with biophilic and acoustic qualities.



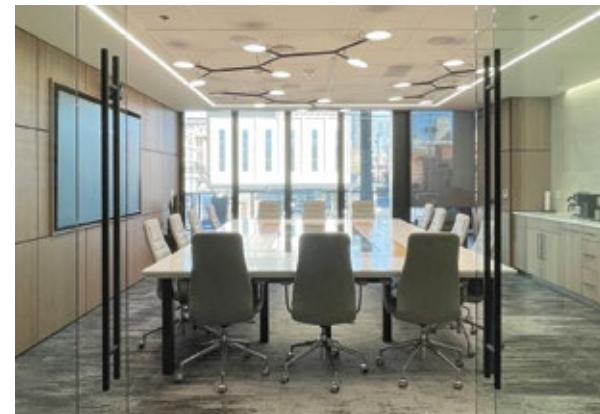
SATTLER

Slim Wall





SATTLER



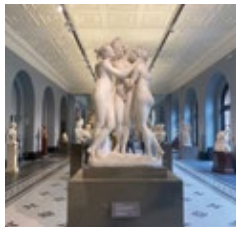


STOANE LIGHTING

Stoane Lighting designs and manufactures the highest level of product. Utilizing quality materials, the latest appropriate technology and the most efficient design and engineering philosophy, Stoane Lighting products are produced in compliance with the most stringent environmental sensitivities.

Controlling all aspects of the process, Stoane Lighting can treat standard and custom luminaires in the same high quality, environmentally-conscious manner, and with service life in mind.

If you are a lighting designer, do yourself a favor...

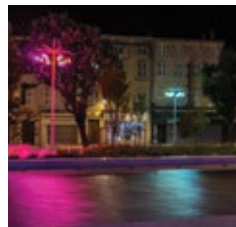
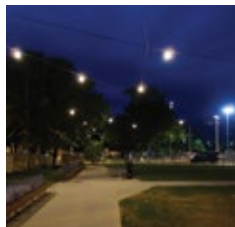




STOANE LIGHTING

G-CAT is a versatile, decorative yet functional, robust catenary lighting system. Varied optical accessories provide general illumination or accent lighting in any outdoor space. The tensioned cable system mounts to any structure and carries the electrical supply to single or multiple luminaires.

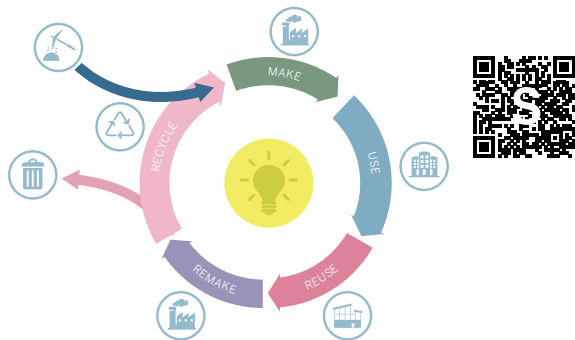
Using Stoane Lighting's capability to introduce custom adaptations, sparkling spheres and shadow-casting shades can be applied for unique results.



STOANE LIGHTING

Circular Economy

Sustainable lighting for the circular economy. Stoane Lighting products are designed to be easily disassembled, so internal components can be replaced, upgraded and eventually recycled.



MODULAR Common components across multiple products



REPLACEABLE Upgradeable optics, light sources and drivers



REMANUFACTURABLE Light sources and optics

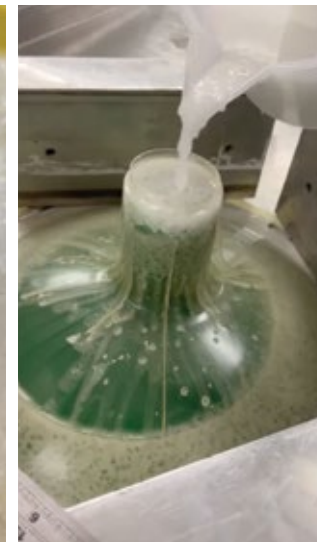


ECODESIGN Meet Ecodesign energy efficiency and performance thresholds



STOANE LIGHTING

Stoane Lighting melts down scrap aluminum and acrylic and recasts it into new products!



STOANE LIGHTING

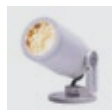
Amanita



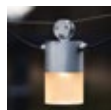
Firefly



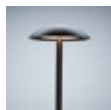
Frog Type X Zoom



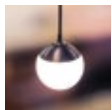
G Cat



Mushroom



Orb



Pipien



ZTA 35 Surface



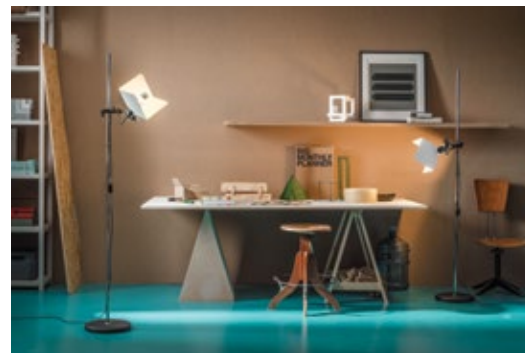
VCL



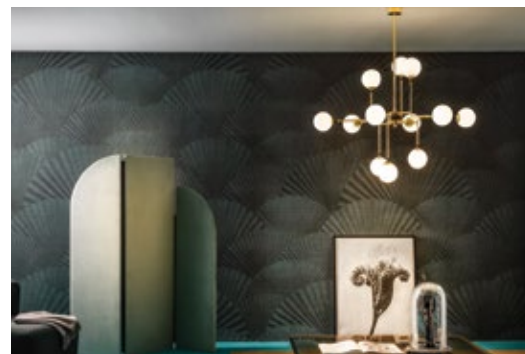
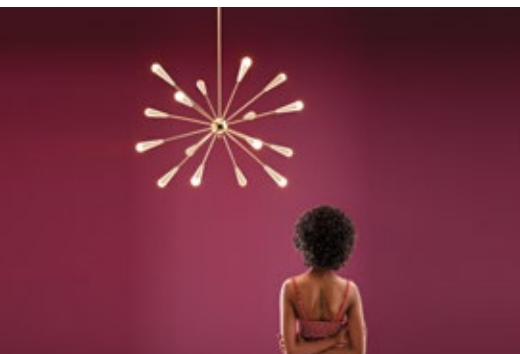


decorative

Inter-lux has curated a collection of decorative lighting products that represent the best in design for use in commercial offices, restaurants and hotels.



This is Inter-lux decorative.



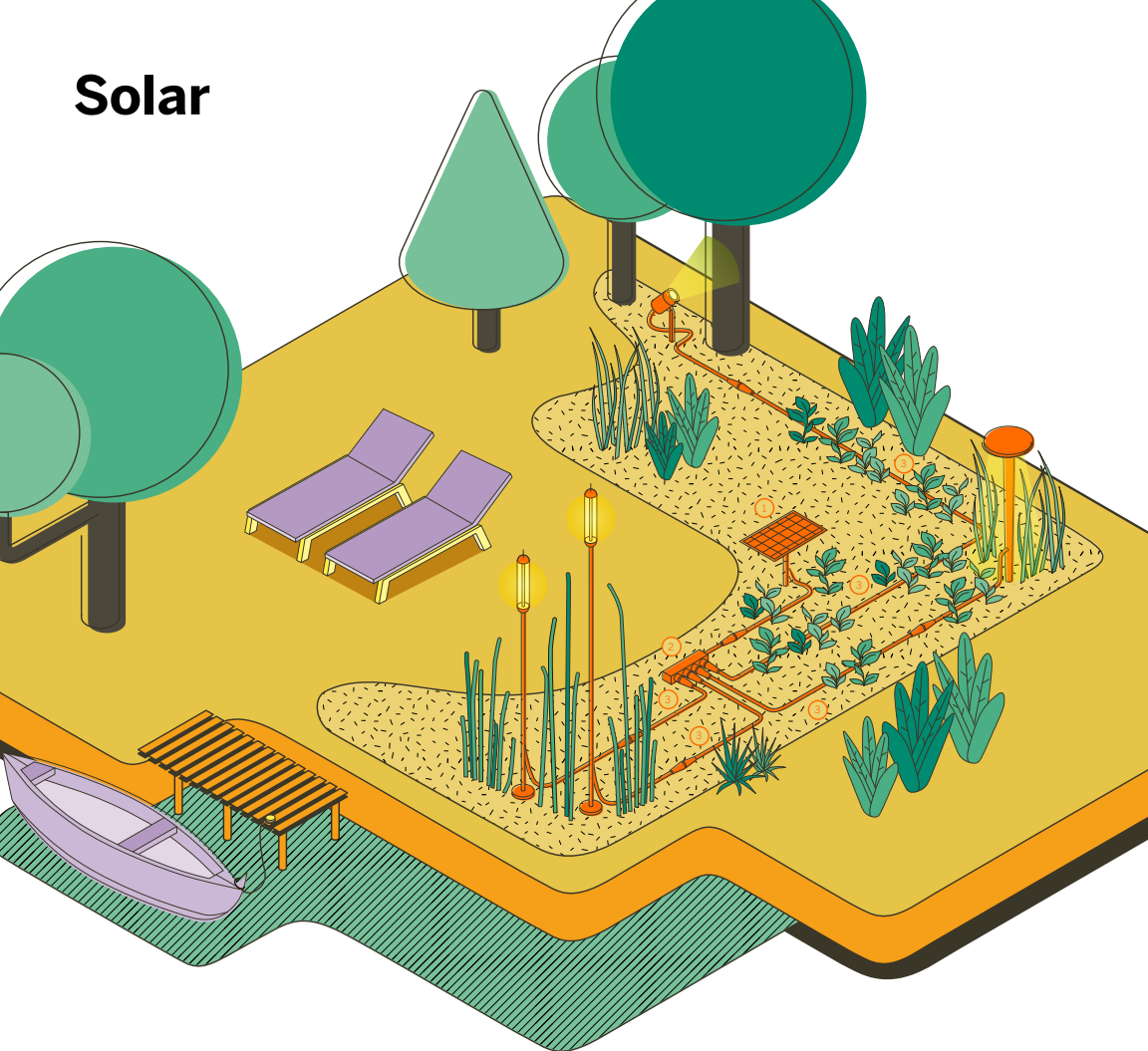
decorative

Minibox wall

STILNOVO



Solar



decorative

STILNOVO

Minibox Wall



IP44.DE

Lix Spike Solar Join



Piek Mini Solar Join



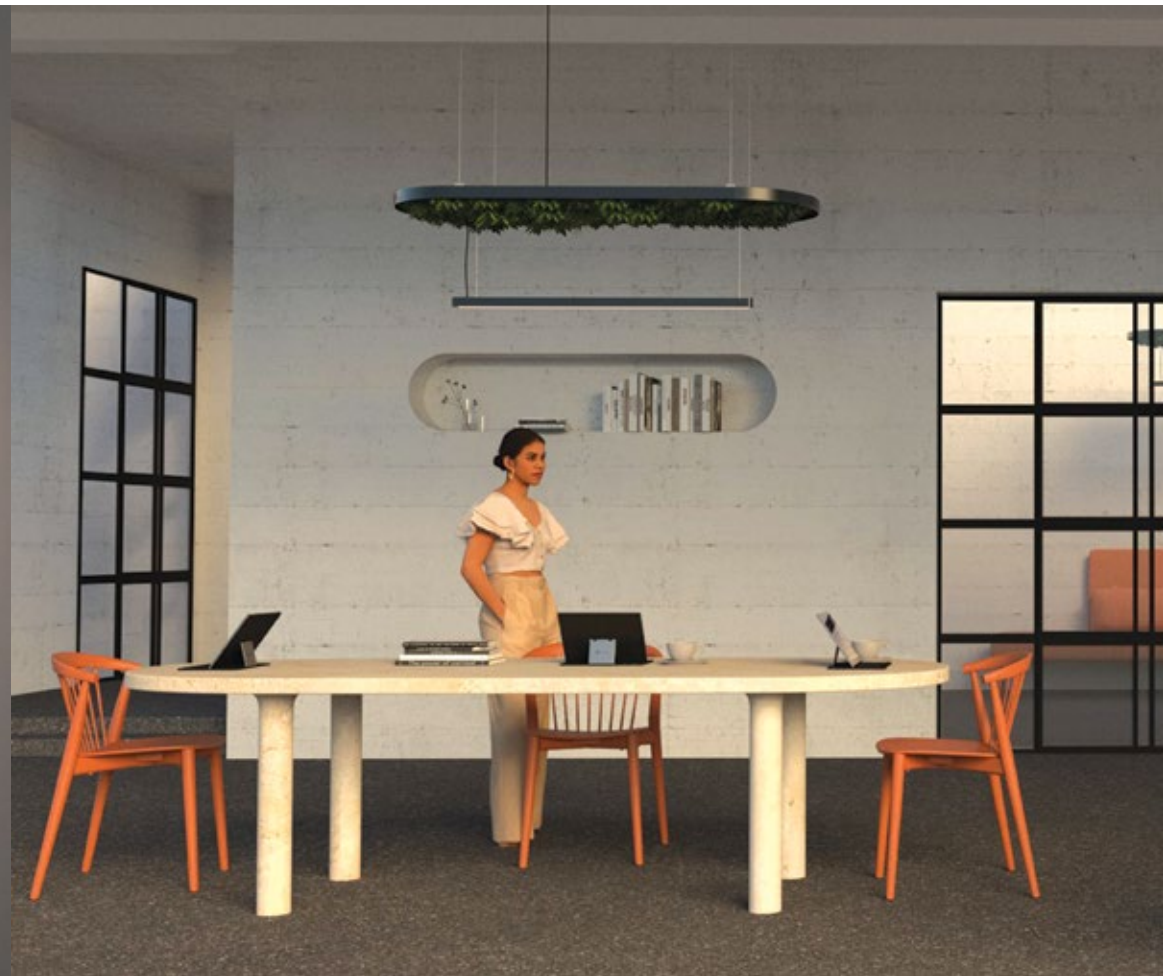
Biophilic

Luce Verde



Biophilic

Hoverlight



Credits



inside front - page 1

project: 181 Fremont
location: San Francisco, CA
lighting design: HLB
specifier: WSP Flack + Kurtz
photography: Lawrence Anderson



page 2 - 3

project: 1111 Brickell Lobby Renovation
location: Miami, FL
architect/specifier: IA Interior Architects
photography: Andrea Calo



page 4 - 5

project: 4600 River Road
location: Riverdale, MD
architect: Powers Brown Architecture
photography: Spielmann Studio



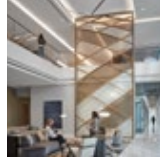
page 4 - 5

project: Daikin Interiors
location: Washington, DC
architect: VA-Spaces
lighting design: StudioHDP
photography: Judy Davis Photography



page 4 - 5

project: Association of American Universities
location: Washington, DC
architect: OTJ Architects
photography: Chris Spielmann



page 4 - 5

project: Confidential Financial Client
location: Chicago, IL
architect: IA Architects
photography: Tom Harris



page 4 - 5

project: ModivCare
location: Denver, CO
architect: Gensler
lighting design: ME Engineers
photography: Jess Blackwell



page 6

project: Daikin Interiors
location: Washington, DC
architect: VA-Spaces
lighting design: StudioHDP
photography: Judy Davis Photography.



page 7

project: American Bankers Association
location: Washington, DC
architect: OTJ Architects
lighting design: CM Kling
photography: Trent Bell



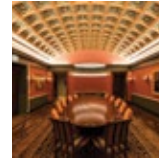
page 11

project: Healthcare Association
location: Washington, DC
architect: OTJ Architects
lighting design: Sarah Richter Design
photography: Trent Bell



page 13

project: Confidential Healthcare Association
location: Washington, DC
architect: OTJ Architects
lighting design: Sarah Richter Design
photography: Trent Bell



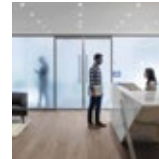
page 14

project: Old Parkland Bell Tower
location: Dallas, TX
architect: The Beck Group
specifier/lighting design: The Lighting Practice
photography: Parrish Ruiz de Velasco



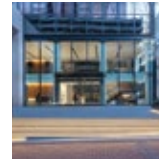
page 14

project: ASHRAE HQ
location: Peachtree Corners, GA
architect: Houser Walker Architecture
specifier: Integral Consulting Engineering
photography: Jonathan Hillyer



page 14

project: Axinn Veltrop & Harkrider
location: Washington, DC
architect: OTJ Architects
photography: Eric Laiguel



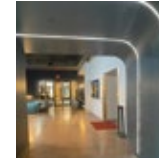
page 14

project: 6th & Main
location: Portland, OR
specifier: GBD Architects
photography: Steve Lerum, Inter-lux



page 16 - 17

project: Cabaret Performance Space
location: Pittsburgh, PA
architect: Moss Architects
lighting design: DLR Group
photography: Ed Massery Photography



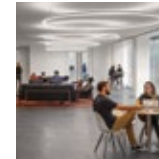
page 17

project: Cabaret Performance Space
location: Pittsburgh, PA
architect: Moss Architects
lighting design: DLR Group
photography: Ed Massery Photography



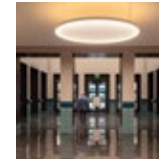
page 26 - 27

project: Nationals Park-FIS Champions Club
location: Washington, DC
architect: SHH
specifier: OPX
photography: HITT Contracting



page 26 - 27

project: 181 Fremont
location: San Francisco, CA
lighting design: HLB
specifier: WSP Flack + Kurtz
photography: Lawrence Anderson



page 26 - 27

project: The Portland Building
location: Portland, OR
architect: DLR Group
photography: Steve Lerum, Inter-lux

Credits



page 30 - 31

project: 1111 Brickell Lobby
location: Miami, Florida
architect/specifier: IA Interior Architects
photography: Andrea Calo



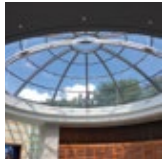
page 30 - 31

project: 601 Marshall
location: Washington, DC
specifier/designer: Electrolight
photography: Steve Lerum, Inter-lux



page 30 - 31

project: Hunt Midwest
location: Kansas City, MO
photography: Ryan Farmer, C&O Sales



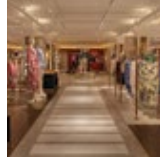
page 32 - 33

project: Crystal Bridges
location: Bentonville, AR
architect: Safdie Architects
lighting design: Lam Partners
photography: Daniel Snyder, Gildner Maddox



page 34 - 35

project: Mälardalen University
location: Eskilstuna, Sweden
lighting design: Chiara Carucci
photography: Erik Hagström



page 37

project: Harrods Lingerie & Lounge
location: London, UK
lighting design: Lighting Design International
photography: Andrew Beasley



page 41

project: DNA Pendant
location: Washington, DC
architect: Fox Architects
photography: Erin Kelleher Photography



page 55

project: Sadler West Addition
location: College of William & Mary, Williamsburg, VA
architect: Grimm + Parker Architects
photography: Halkin | Mason Photography



back cover

project: BWI Airport Concourse D
location: Baltimore, MD
architect: JMT Architecture
lighting design: MCLA
photography: Nathan Cox Photography





inter•lux

inter-lux.com