

# 2.4" ProTools Downlight

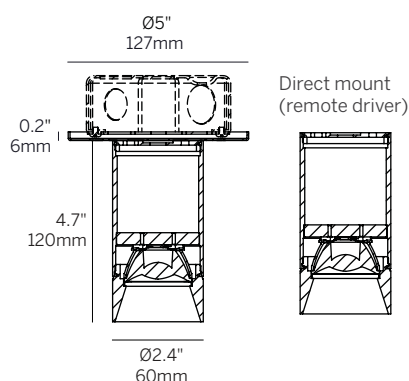
## Round Cylinder

inter•lux



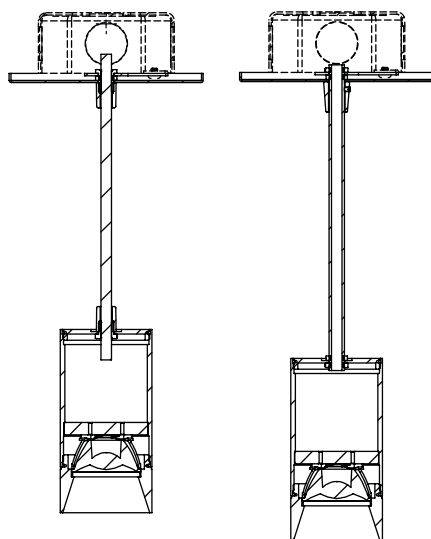
Ordering Information											
WG-60RPTDL							RRC				
Model	Mounting	Canopy	Power <sup>2</sup>	CRI	CCT <sup>3</sup>	Driver <sup>4</sup>	Cover	Lens	Beam	Finish <sup>6</sup>	Options
WG-60RPTDL	SM SC1 <sup>1</sup> SC2 <sup>1</sup> SC3 <sup>1</sup> SR1 SR2 SR3 SRX	5 X	L M H	92 98	27 30 35 40 WD	RS010 RD010 RSPH RPEQ0 RD2S X <sup>5</sup>	RRC	OA SOL LSL HL	15 20 25 35 50	W (std) B S F	EM WL AWNRF

Surface mount (SM)

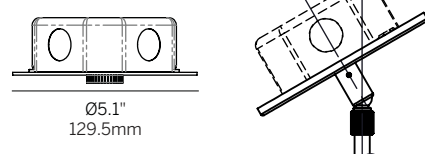


Suspended cable (SC)

Suspended rigid stem (SR)



Canopy (5" dia, 4" j-box)



### Luminaire

- 2.4" round ceiling mounted cylinder downlight.
- Surface, suspended cable and rigid stem mounting.
- Wide range of LED CCTs and reflectors.
- High lumen output and excellent color rendition for all applications. Efficacy up to 140 lumens per watt (delivered).
- UGR < 19 for some configurations to comply with WELL requirements.
- CREE 2 step McAdam LEDs.
- CRI >92+ standard, >98+ available.
- Warm Dim 1800 - 3000K.
- Long life L70 55,000 hrs based on LM-80 & TM-21 applicable test data.
- Constant current drivers.
- 0-10V, Phase, Lutron, DALI and DMX options available.
- 5 Year warranty.

### Mounting

- SM = Surface mounted
- SC1 = Suspended cable 39.4" (1m)<sup>1</sup>
- SC2 = Suspended cable 78.7" (2m)<sup>1</sup>
- SC3 = Suspended cable 118.1" (3m)<sup>1</sup>
- SR1 = Suspended rigid swivel stem 39.4" (1m)
- SR2 = Suspended rigid swivel stem 78.7" (2m)
- SR3 = Suspended rigid swivel stem 118.1" (3m)
- SRX = Suspended rigid swivel stem (specify to nearest 0.25", 118.1" max.)

### Canopy

- 5 = 5" dia. for 4" j-box
- X = No Canopy (surface mount only)

### Power<sup>2</sup>

- L = Low Power, 6.3W @ 350mA
- M = Mid Power, 9W @ 250mA
- H = High Power, 12W @ 350mA

### CRI

- 92 = 92 CRI
- 98 = 98 CRI (n/a for WD)

### CCT<sup>3</sup>

- 27 = 2700K
- 30 = 3000K
- 35 = 3500K
- 40 = 4000K
- WD = Warm Dimming 1800 - 3000K

### Remote Driver<sup>4</sup>

- RS010 = Remote eldoLED 0-10V 1% dimming, 120-277V (22W, 50W or 100W)
- RD010 = Remote eldoLED 0-10V 0.1% dimming, 120-277V (22W, 50W or 100W)
- RSPH = Remote phase (2-wire) 3% dimming, 120V only (20W)
- RPEQ0 = Remote Lutron Hi-Lume Premier 0.1% EcoSystem dimming, 120-277V (20W)
- RD2S = Remote DALI-2 (DT6) for Static White 0.1% dimming, 120-277V (22W, 50W or 100W)
- X = No Driver<sup>5</sup>

### Cover

- RRC = Round Recessed Cone

### Lens (one accessory per fixture)

- OA = Open Aperture
- SOL = Solite Lens
- LSL = Linear Spread Lens
- HL = Honeycomb Louver

### Beam

- 15 = 15° Beam Angle (n/a for WD)
- 20 = 20° Beam Angle
- 25 = 25° Beam Angle
- 35 = 35° Beam Angle (40° for WD)
- 50 = 50° Beam Angle

### Housing / Reflector Finish<sup>6</sup>

- W = White, RAL 9003 (standard)
- B = Black, RAL 9017
- S = Silver, RAL 9006
- F = Custom finish, specify RAL code

### Options

- EM = Emergency LED battery backup (remote only)
- WL = Wet location (IP65)
- AWNRf = Lutron Athena Wireless Node RF (RS010, RD010, RD2S drivers only)

- Suspended cable field adjustable.
- Wattage shown does not include power supplies/drivers.
- See photometric data sheet for delivered lumens.
- See driver information for details.
- Refer to driver information page for driver options that can power multiple fixtures. Ordered separately.
- Fixture, stem and canopy finish match.

Powered by I B L

whitegoods

410 381 1497 inter-lux.com answers@inter-lux.com  
Inter-lux reserves the right to make technical changes without notice.



Updated 5.2025 1