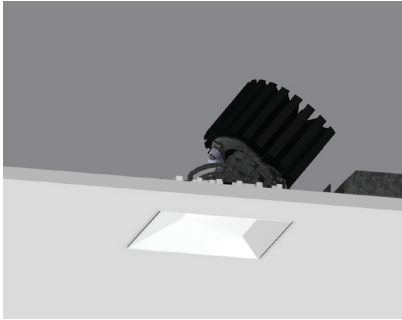


1. **4" ProTools DL Adjustable Square Asymmetric Cover**
WG-100SPTDLA-RPT-SAC
2. **4" ProTools DL Adjustable Round Regressed Pinhole Cover**
WG-100RPTDLA-RPT-RPT
3. **4" ProTools DL Adjustable Wall Wash Square Asymmetric Cover and Shift Lens**
WG-100SPTDLWW-RBT-SWW
4. **4" ProTools DL Downlight Round Regressed Pinhole Cover**
WG-100RPTDLF-RBT-RRP
5. **4" ProTools D Downlight Round Flush Diffuser**
WG-100RPTD-RPT-RFOD

6. SRC = Square Regressed Cone - White
7. SRC = Square Regressed Cone - Gray
8. FSOD = Flush Square Opal Diffuser
9. RRC = Round Regressed Cone - White
10. RRC = Round Regressed Cone W/ Satin Lens
11. RRC = Round Regressed Cone - Gray
12. Laser Aim Stick
13. Driver Housing

ProTools Large Sample Case Guide



4" ProTools DL Adjustable Square Asymmetric Cover

WG-100SPTDLA-RPT-SAC

- 4" ceiling aperture
- 2" light aperture
- 3/4" regressed lens
- Breakaway trim tabs
- 4 power levels
- Up to 2171 lumens
- 40° tilt
- 16° - 32° - 41° optics

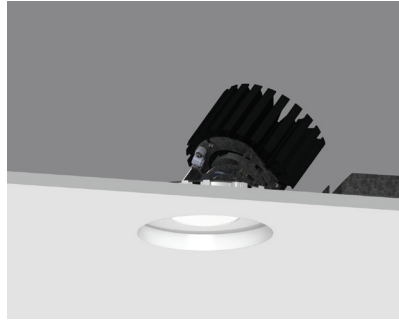
Power

- L = Low Power, 5.7W @ 350mA
- M = Mid Power, 8.4W @ 500mA
- H = High Power, 12.0W @ 700mA
- XH = Extra High Power, 17.8W @ 1050mA

CRI/CCT

90+ CRI
(Low/Medium/High/Extra High)

- 927 = 2700K,
(720/999/1344/1884 lm)
- 930 = 3000K,
(775/1075/1447/2027 lm)
- 935 = 3500K,
(775/1075/1447/2027 lm)
- 940 = 4000K,
(830/1151/1549/2171 lm)



4" ProTools DL Adjustable Round Regressed Pinhole Cover

WG-100RPTDLA-RPT-RPT

- 4" ceiling aperture
- 2" light aperture
- 1/2" regressed lens
- 4 power levels
- Up to 2171 lumens
- 16° - 32° - 41° optics

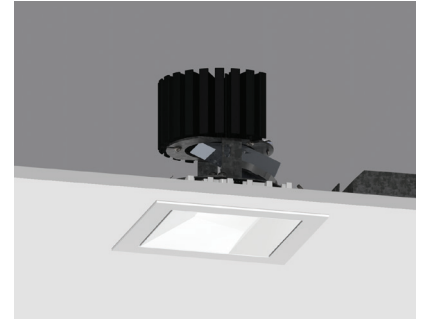
Power

- L = Low Power, 5.7W @ 350mA
- M = Mid Power, 8.4W @ 500mA
- H = High Power, 12.0W @ 700mA
- XH = Extra High Power, 17.8W @ 1050mA

CRI/CCT

90+ CRI
(Low/Medium/High/Extra High)

- 927 = 2700K,
(720/999/1344/1884 lm)
- 930 = 3000K,
(775/1075/1447/2027 lm)
- 935 = 3500K,
(775/1075/1447/2027 lm)
- 940 = 4000K,
(830/1151/1549/2171 lm)



4" ProTools DL Adjustable Wall Wash Square Asymmetric Cover and Shift Lens

WG-100SPTDLWW-RBT-SWW

- 4" ceiling aperture
- 2" light aperture
- 3/4" regressed lens
- 4 power levels
- Up to 2171 lumens
- Wall wash distribution

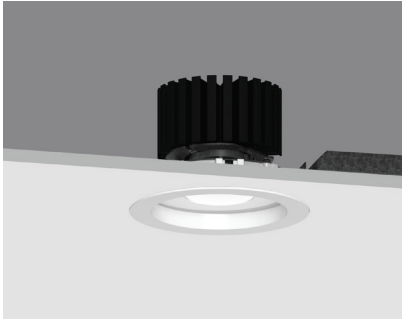
Power

- L = Low Power, 5.7W @ 350mA
- M = Mid Power, 8.4W @ 500mA
- H = High Power, 12.0W @ 700mA
- XH = Extra High Power, 17.8W @ 1050mA

CRI/CCT

90+ CRI
(Low/Medium/High/Extra High)

- 927 = 2700K,
(720/999/1344/1884 lm)
- 930 = 3000K,
(775/1075/1447/2027 lm)
- 935 = 3500K,
(775/1075/1447/2027 lm)
- 940 = 4000K,
(830/1151/1549/2171 lm)



4" ProTools DL Downlight Round Regressed Pinhole Cover

WG-100RPTDLF-RBT-RRP

- 4" ceiling aperture
- 2" light aperture
- ½" regressed lens
- Breakaway trim tabs
- 4 power levels
- Up to 2171 lumens
- 16° - 32° - 41° optics

Power

- Low Power, 5.5W @ 350mA
- Mid Power, 8W @ 500mA
- High Power, 11.4W @ 700mA

CRI/CCT

90+ CRI (Low/Medium/High Power)

- 2700K, (759/1074/1488 lm)
- 3000K, (771/1092/1512 lm)
- 3500K, (795/1128/1566 lm)
- 4000K, (834/1188/1638 lm)



4" ProTools D Downlight Round Flush Diffuser

WG-100RPTD-RPT-RFOD

- 4" ceiling aperture
- Satin opal flush lens
- 3 power levels
- Up to 1638 lumens
- High angle illumination

Power

- Low Power, 5.5W @ 350mA
- Mid Power, 8W @ 500mA
- High Power, 11.4W @ 700mA

CRI/CCT

90+ CRI (Low/Medium/High Power)

- 2700K, (759/1074/1488 lm)
- 3000K, (771/1092/1512 lm)
- 3500K, (795/1128/1566 lm)
- 4000K, (834/1188/1638 lm)