

1.5" ProTools Downlight

Square Recessed

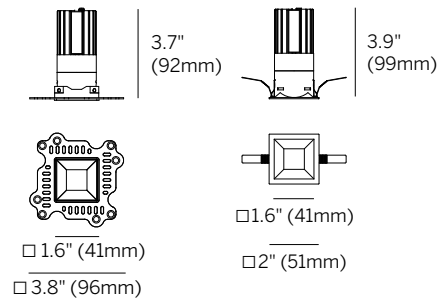
inter•lux



Recessed Plaster Trim (RPT)

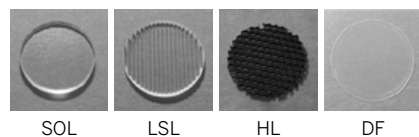


Recessed Bezel Trim (RBT)



Plaster Trim (RPT)
Cutout: □ 2" (50mm)

Bezel Trim (RBT)
Cutout: □ 1.8" (46mm)



whitegoods

Ordering Information										
WG-40SPTDL		M	92			OA				
Model	Fixation	Power ¹	CRI	CCT ²	Driver ^{3,4}	Cover	Beam	Trim Finish	Housing ⁴	Options
WG-40SPTDL	RBT RPT	M	92	27 30 35 40 WD	S1* S2* SPH* D010* PEQ0* DALI*	OA	20 25 35 50	W (std) B S F	NC LP IC CP X ⁵	SOL ⁶ LSL ⁶ HL ⁶ DF WL EM

*Add 'R' for remote driver, ex. 'RS2'

Luminaire

- Part of a complete family of 1.5" aperture matching downlights.
- General illumination allows 6' spacing on 9' ceiling height for 15+FC maintained.
- Very small aperture, low brightness downlight for general and accent illumination.
- High lumen output and excellent color rendition for all applications.
- Multiple housing styles for mounting into all ceiling types.
- Very shallow ceiling depth required for both integral and remote drivers.
- L70 (TM21 Projected 85°C) = Static White 33,300 hours Warm Dim 55,000 hours.

Fixation

- RPT = Recessed Plaster Trim
- RBT = Recessed Bezel Trim

Power¹

- M = Mid Power, 9.1W @ 500mA

CRI

- 92 = 92 CRI

CCT (Mid)²

- 27 = 2700K
- 30 = 3000K
- 35 = 3500K
- 40 = 4000K
- WD = Warm Dimming 1800 - 3000K

Integral Driver NC / IC / CP Housings

Accessible Ceiling^{3,4}

- S1 = standard eldoLED non-dim or 1% 0-10V dimming, 120-277V, 12W
- S2 = standard eldoLED non-dim or 1% 0-10V dimming, 120-277V, 22W
- SPH = standard phase (2-wire) 10% dimming, 120V only, 12W
- D010 = eldoLED 1% 0-10V dimming, 120-277V, 30W
- PEQ0 = Lutron Hi-Lume Premier 0.1% EcoSystem, 120-277V, 20W
- DALI = eldoLED DALI-2 0.1% dimming, 120-277V, 20W

Remote Driver for NC / LP / IC / CP^{3,4}

- RS1 = standard eldoLED non-dim or 1% 0-10V dimming, 120-277V, 12W, for 1 fixture
- RS2 = standard eldoLED non-dim or 1% 0-10V dimming, 120-277V, 22W, for 1-2 fixtures
- RSPH = standard phase (2-wire) 10% dimming, 120V only, 12W, for 1 fixture
- RD010 = eldoLED 0.1% 0-10V dimming, 120-277V, 100W, for 1-8 fixtures
- RPEQ0 = Lutron Hi-Lume Premier 0.1% EcoSystem, 120-277V, 20W, for 1-2 fixtures
- RDALI = eldoLED DALI-2 0.1% dimming, 120-277V, 100W, for 1-4 fixtures

Cover

- OA = Open Aperture (clear lens provided standard, see options below)

Beam

- 20 = 20° Beam Angle
- 25 = 25° Beam Angle
- 35 = 35° Beam Angle
- 50 = 50° Beam Angle

Trim Finish

- W = White, 15% gloss, RAL 9003 / Tiger Drylac 49/11350 (standard)
- B = Black, 15% gloss, RAL 9005 / Tiger Drylac 044/90053
- S = Silver, 15% gloss, RAL 9006 / Tiger Drylac 49/90500
- F = Custom finish, specify RAL code

Housing⁴

- NC = New Construction Housing (integral driver for accessible ceilings only)
- LP = Landing Pan (for remote driver)
- IC = Insulated Ceiling Housing (integral driver for accessible ceilings only)
- CP = Chicago Plenum Housing (integral driver for accessible ceilings only)
- X = No Housing⁵

Options

- SOL = Solite Lens⁶
- LSL = Linear Spread Lens⁶
- HL = Honeycomb Louver⁶
- DF = Diffusing Film
- WL = Wet Location
- EM = Emergency LED battery backup (remote only)

1. Wattage shown is for LED only, system wattage varies depending on driver selected.
2. See photometric data sheet for delivered lumens.
3. See driver information page for details.
4. Refer to housings detail page for additional information.
5. Fixtures can be installed without housing.
6. One accessory per fixture.

