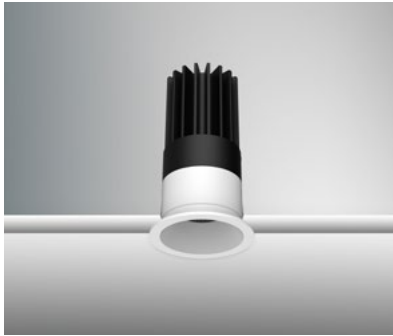


# 1.5" ProTools Downlight

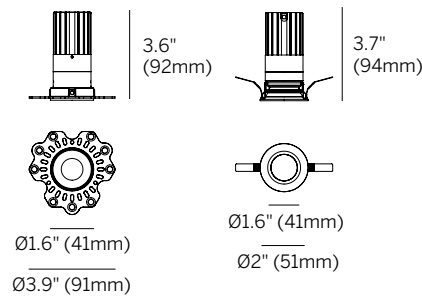
## Round Recessed



Recessed Plaster Trim (RPT)

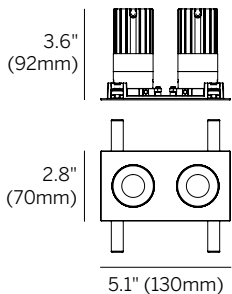


Recessed Bezel Trim (RBT)

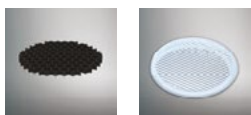


Plaster Trim (RPT)  
Cutout: Ø2.1" (54mm)

Bezel Trim (RBT)  
Cutout: Ø1.8" (45mm)



Twin Trim (TT)  
Cutout: 1.4" x 4.7" (60 x 120mm)



HL MPL

Ordering Information										
Model	Fixation	Power <sup>2</sup>	CRI	CCT <sup>3</sup>	Driver <sup>4,5</sup>	Cover	Beam	Trim Finish	Housing <sup>5</sup>	Options
WG-40RPTDL		M	92			OA				
WG-40RPTDL	RBT RPT TT <sup>1</sup>	M	92	27 30 35 40 WD	S1* S2* SPH* DO10* PEQ0* DALI*	OA	20 25 35 50	W (std) B S F	NC LP IC CP X <sup>6</sup>	HL MPL WL EM

\*Add 'R' for remote driver, ex. 'RS2'

### Luminaire

- Part of a complete family of 1.5" aperture matching downlights.
- General illumination allows 6' spacing on 9' ceiling height for 15+FC maintained.
- Very small aperture, low brightness downlight for general and accent illumination.
- High lumen output and excellent color rendition for all applications.
- Multiple housing styles for mounting into all ceiling types.
- Very shallow ceiling depth required for both integral and remote drivers.
- L70 (TM21 Projected 85°C) = Static White 33,300 hours Warm Dim 55,000 hours.

### Fixation

- RPT = Recessed Plaster Trim
- RBT = Recessed Bezel Trim
- TT = Twin Trim<sup>1</sup>

### Power<sup>2</sup>

- M = Mid Power, 9.1W @ 500mA

### CRI

- 92 = 92 CRI

### CCT (Mid)<sup>3</sup>

- 27 = 2700K
- 30 = 3000K
- 35 = 3500K
- 40 = 4000K
- WD = Warm Dimming 1800 - 3000K

### Integral Driver NC / IC / CP Housings

#### Accessible Ceiling<sup>4,5</sup>

- S1 = standard eldoLED non-dim or 1% 0-10V dimming, 120-277V, 12W
- S2 = standard eldoLED non-dim or 1% 0-10V dimming, 120-277V, 22W
- SPH = standard phase (2-wire) 10% dimming, 120V only, 12W
- DO10 = eldoLED 1% 0-10V dimming, 120-277V, 30W
- PEQ0 = Lutron Hi-Lume Premier 0.1% EcoSystem, 120-277V, 20W
- DALI = eldoLED DALI-2 0.1% dimming, 120-277V, 20W

### Remote Driver for NC / LP / IC / CP<sup>4,5</sup>

- RS1 = standard eldoLED non-dim or 1% 0-10V dimming, 120-277V, 12W, for 1 fixture
- RS2 = standard eldoLED non-dim or 1% 0-10V dimming, 120-277V, 22W, for 1-2 fixtures
- RSPH = standard phase (2-wire) 10% dimming, 120V only, 12W, for 1 fixture
- RD010 = eldoLED 0.1% 0-10V dimming, 120-277V, 100W, for 1-8 fixtures
- RPEQ0 = Lutron Hi-Lume Premier 0.1% EcoSystem, 120-277V, 20W, for 1-2 fixtures
- RDALI = eldoLED DALI-2 0.1% dimming, 120-277V, 100W, for 1-4 fixtures

### Cover

- OA = Open Aperture

### Beam

- 20 = 20° Beam Angle
- 25 = 25° Beam Angle
- 35 = 35° Beam Angle
- 50 = 50° Beam Angle

### Trim Finish

- W = White, 15% gloss, RAL 9003 / Tiger Drylac 49/11350 (standard)
- B = Black, 15% gloss, RAL 9005 / Tiger Drylac 044/90053
- S = Silver, 15% gloss, RAL 9006 / Tiger Drylac 49/90500
- F = Custom finish, specify RAL code

### Housing<sup>5</sup>

- NC = New Construction Housing (integral driver for accessible ceilings only)
- LP = Landing Pan (for remote driver)
- IC = Insulated Ceiling Housing (integral driver for accessible ceilings only)
- CP = Chicago Plenum Housing (integral driver for accessible ceilings only)
- X = No Housing<sup>6</sup>

### Options

- HL = Honeycomb louver
- MPL = Micro-prismatic lens
- WL = Wet location
- EM = Emergency LED battery backup (remote only)

1. TT Twin Trim will be provided with (2) matching fixtures, unless specified otherwise.
2. Wattage shown is for LED only, system wattage varies depending on driver selected.
3. See photometric data sheet for delivered lumens.
4. See driver information for details.
5. Refer to Housings detail page for additional information.
6. Fixture can be installed without housing.