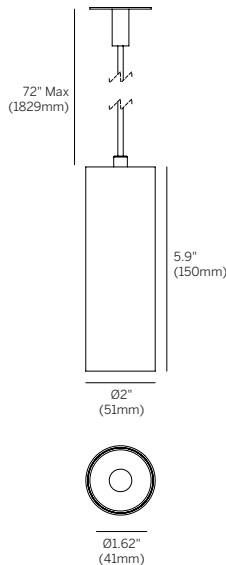


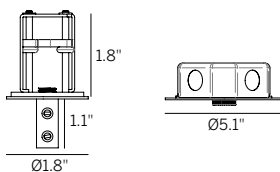
# 1.5" ProTools Downlight

## Round Suspended Cylinder

inter•lux

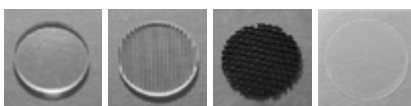


Canopy



2" dia

5" dia for  
4" j-box



SOL LSL HL DF

### Ordering Information

WG-40RPTDL	S		M	92			RRC					
Model	Suspension	Canopy	Power <sup>1</sup>	CRI	CCT <sup>2</sup>	Driver <sup>3</sup>	Cover	Lens	Beam	Cover Finish	Housing Finish	Options
WG-40RPTDL	S	2 5	M	92	27 30 35 40 WD	RS010 RD010 RSPH RPEQ0 RD2S X	RRC	OA <sup>4</sup> SOL <sup>4</sup> LSL <sup>4</sup> HL <sup>4</sup> DF	20 25 35 50	W B S F	W B S F	EM AWNRF

### Luminaire

- Part of a complete family of 1.5" aperture matching downlights.
- 2" diameter suspended cylinder downlight with 1.6" round aperture with 0.8" light aperture regressed 0.5" from bottom of fixture.
- Efficacy up to 83 lumens per watt (delivered).
- UGR < 19 for some configurations to comply with WELL requirements.
- CREE 3-step MacAdam LEDs.
- CRI 92+ standard.
- L70 (TM21 Projected 85°C) Static White 33,300 hours. Warm Dim 55,000 hours.
- ETL and ETL-C for dry and damp locations.
- Housings available (see housings page).
- 5-year warranty.

### Suspension

- S = Suspension, 72" standard length, field adjusted

### Canopy

- 2 = 2" dia. surface mount
- 5 = 5" dia. for 4" j-box

### Power<sup>1</sup>

- M = Mid Power, 9.1W @ 500mA

### CRI

- 92 = 92 CRI

### CCT<sup>2</sup>

- 27 = 2700K
- 30 = 3000K
- 35 = 3500K
- 40 = 4000K
- WD = Warm Dimming 1800 - 3000K

### Remote Driver<sup>3</sup>

- RS010 = Remote eldoLED 0-10V 1% dimming, 120-277V (22W, 50W or 100W)
- RD010 = Remote eldoLED 0-10V 0.1% dimming, 120-277V (22W, 50W or 100W)
- RSPH = Remote phase (2-wire) 3% dimming, 120V only (20W)
- RPEQ0 = Remote Lutron Hi-Lume Premier 0.1% EcoSystem dimming, 120-277V (20W)
- RD2S = Remote DALI-2 for Static White 0.1% dimming, 120-277V (22W, 50W or 100W)
- X = No Driver

### Cover

- RRC = Round Recessed Cone

### Lens

- OA = Open Aperture (clear lens provided standard)<sup>4</sup>
- SOL = Solite Lens<sup>4</sup>
- LSL = Linear Spread Lens<sup>4</sup>
- HL = Honeycomb Louver<sup>4</sup>
- DF = Diffusing Film

### Beam

- 20 = 20° Beam Angle
- 25 = 25° Beam Angle
- 35 = 35° Beam Angle
- 50 = 50° Beam Angle

### Cover Finish

- W = White, 15% gloss, RAL 9003 (standard)
- B = Black, 15% gloss, RAL 9005
- S = Silver, 15% gloss, RAL 9006
- F = Custom finish, specify RAL code

### Housing Finish

- W = White, 15% gloss, RAL 9003 (standard)
- B = Black, 15% gloss, RAL 9005
- S = Silver, 15% gloss, RAL 9006
- F = Custom finish, specify RAL code

### Options

- EM = Emergency (remote only)
- AWNRF = Lutron Athena Wireless Node RF (RS010, RD010, RD2S drivers only)

1. Wattage shown does not include power supplies / drivers.
2. See photometric data sheet for delivered lumens.
3. See driver information page for details.
4. One accessory per fixture.