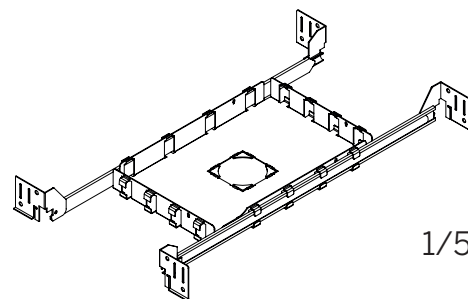


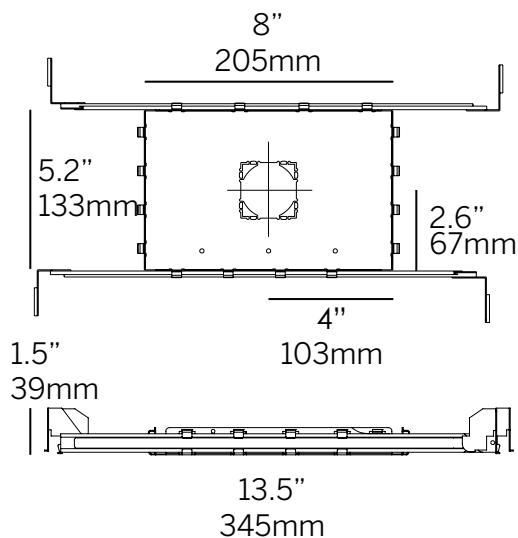
1.5" ProTools Downlights

Landing Pan

Housing Information



1/5



Landing Pan

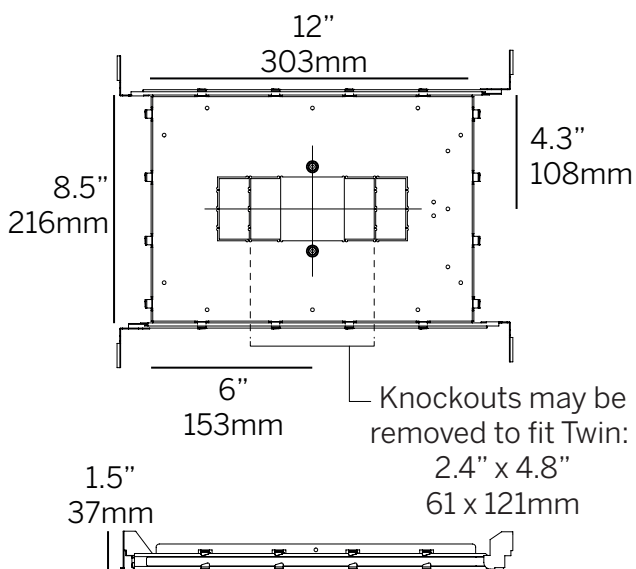
- Galvanized steel constructions
- Housing compatible with:
 - Round/square inserts for plaster and bezel trims
 - Twin trim
- Supplied with hanger bars that adjust between 13.6" and 24.5"

Driver (Remote only)

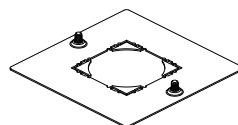
- RS010 = Standard eldoLED 1%, 0-10V dimming, 120-277V
- RD010 = Standard eldoLED 0.1%, 0-10V dimming, 120-277V
- RSPH = Triac/ELV (2-wire) 3% dimming, 120V only
- RPEQ0 = Lutron Hi-lume Premier 0.1% EcoSystem, 120-277V
- RD2S = eldoLED DALI-2 0.1% dimming, 120-277V
- EM= Iota 7W or 12W Emergency Driver, 120-277V

Hanger bars adjustable from 13.6 to 24.5" (345 to 622mm)

Refer to the chart on page 4 for more information on Housing/Driver compatibility.

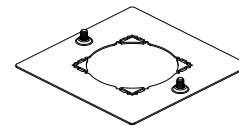


Round/Square Insert for Bezel Trim



Round Cutout: 1.75"/45mm
Square Cutout: 1.8"/46mm

Round/Square Insert for Plaster Trim

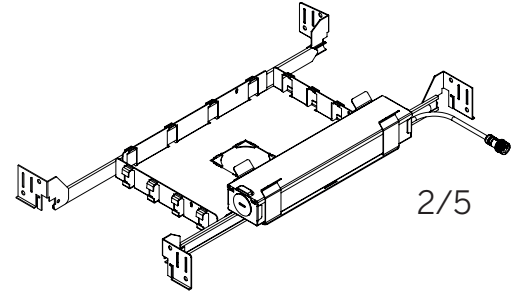
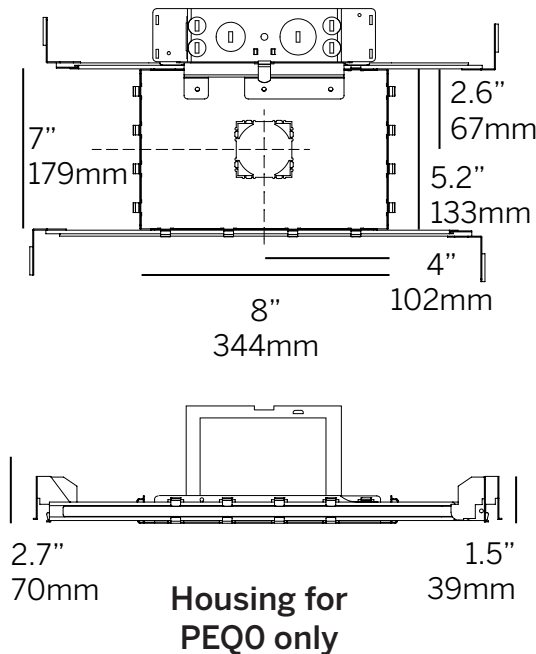
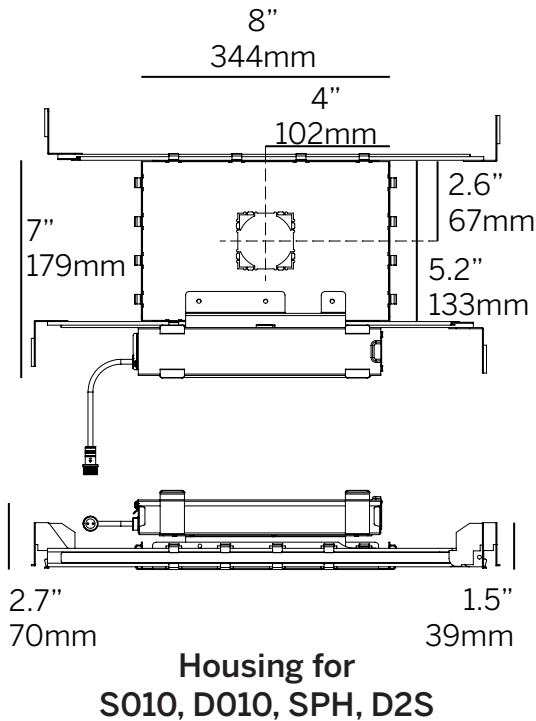


Round Cutout: 2.1"/54mm
Square Cutout: 2"/50mm

1.5" ProTools Downlights

New Construction

Housing Information



New Construction

- New Construction housing for accessible ceilings only
- Housing compatible with round/ square inserts for plaster/bezel
- Integral junction box and driver accessible from adjacent accessible ceiling
- Supplied with hanger bars that adjust between 13.6" and 24.5"
- Galvanized steel constructions

Driver

- S010 = eldoLED 1%, 0-10V dimming, 120-277V
- D010 = eldoLED 0.1%, 0-10V dimming, 120-277V
- SPH = Triac/ELV (2-wire) 3% dimming, 120V only
- PEQ0 = Hi Lume Premier EcoSystem 0.1% dimming, 120-277V
- D2S = standard eldoLED 0.1% DALI-2 dimming, 120-277V
- EM= Bodine 6W Emergency Driver, 120-277V
- EM= Iota 7W or 12W Emergency Driver, 120-277V (Remote only)

Refer to the chart on page 4 for more information on Housing/ Driver compatability.

Twin Trim and Emergency Driver
Housings shown next page

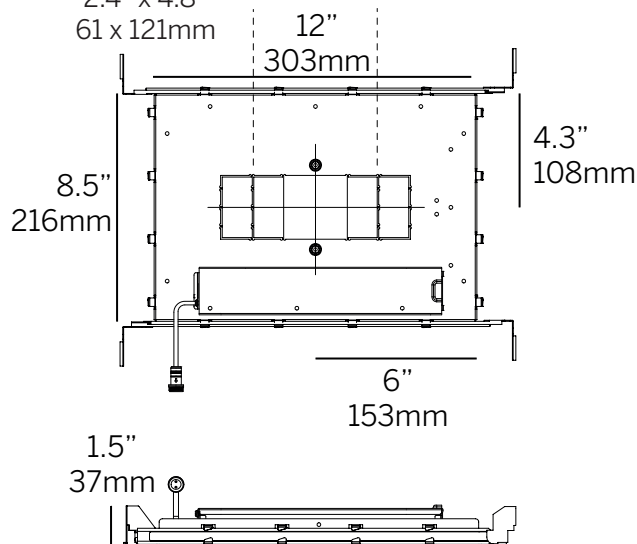
Housing Information

New Construction
Twin Trim Housing

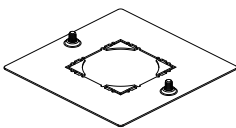
3/5

Knockouts may be removed to fit Twin:

2.4" x 4.8"
61 x 121mm

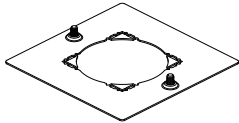


Round/Square Insert
for Bezel Trim



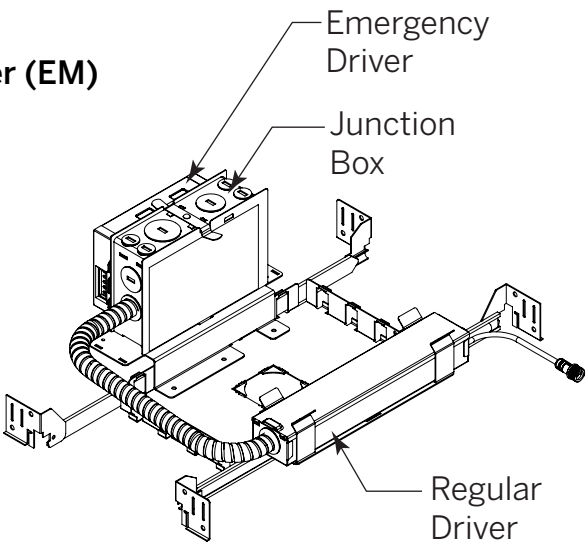
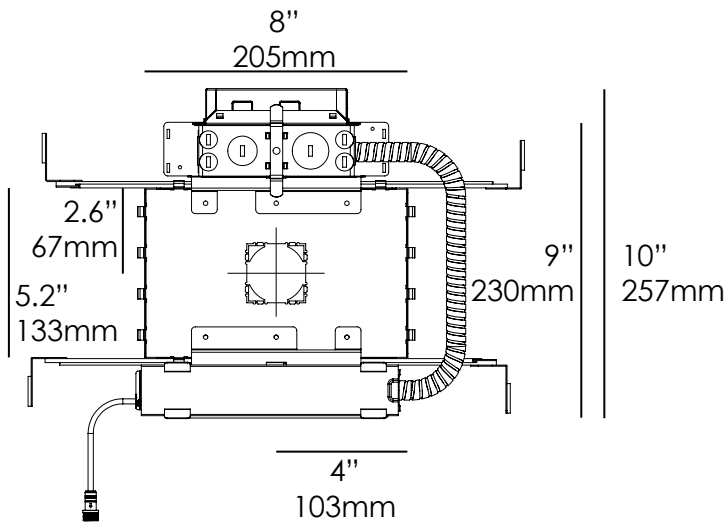
Round Cutout: 1.75"/45mm
Square Cutout: 1.8"/46mm

Round/Square Insert
for Plaster Trim



Round Cutout: 2.1"/54mm
Square Cutout: 2"/50mm

Emergency Driver (EM)

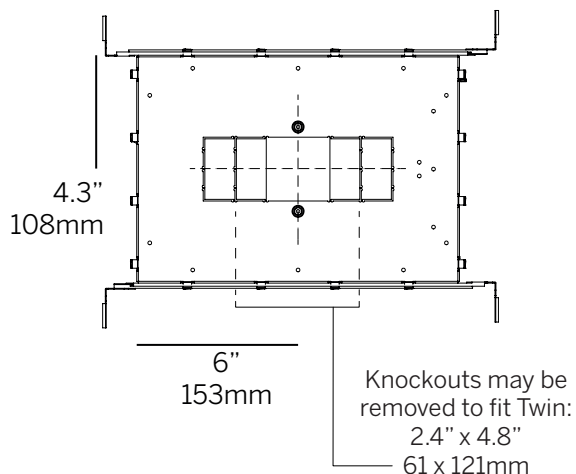
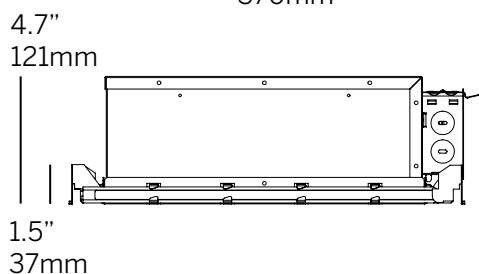
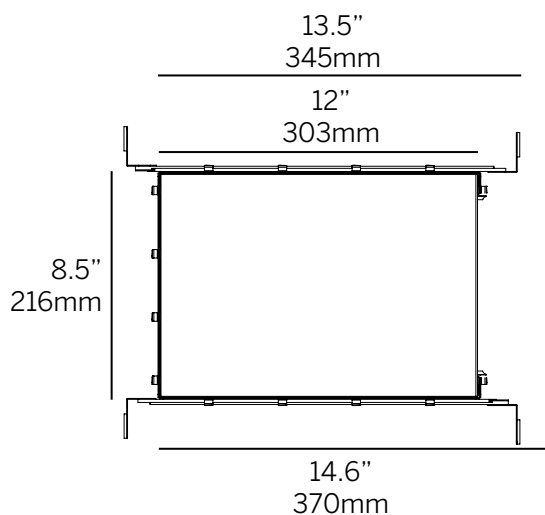
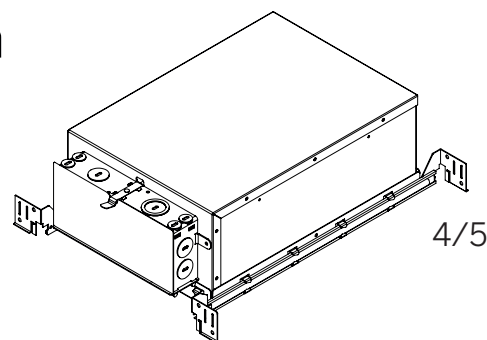


NOTE: When the PEQO driver is specified with the EM Emergency Driver, a second junction box will be added.

1.5" ProTools Downlights

Insulated Ceiling Chicago Plenum

Housing Information



IC/CP

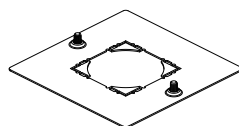
- IC/CP housing for accessible ceilings only
- Housing compatible with:
 - Round/square inserts for plaster and bezel trims
 - Twin trim
- Galvanized steel construction
- Fully caulked corners
- Gasketed mating plaster frame surfaces and of integral junction box
- Integral junction box for wire splice from external power source (optional)
- Supplied with hanger bars that adjust between 13.6" and 24.5"
- Anti-vibration embossing
- Designed for an airflow rate not to exceed 2 CFM

Driver

- S010/RS010 = eldoLED 1%, 0-10V dimming, 120-277V
- D010/RD010 = eldoLED 0.1%, 0-10V dimming, 120-277V
- SPH/RSPH = Triac/ELV 3% dimming, 120V *only*
- PEQ0/RPEQ0 = Lutron Hi-lume Premier 0.1% EcoSystem, 120-277V
- D2S/RD2S = eldoLED DALI-2 0.1% dimming, 120-277V
- EM= Bodine 6W Emergency Driver, 120-277V
- EM= Iota 7W or 12W Emergency Driver, 120-277V (Remote only)

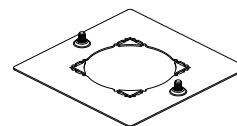
Refer to the chart on page 4 for more information on Housing/Driver compatibility.

Round/Square Insert for Bezel Trim



Round Cutout: 1.75"/45mm
Square Cutout: 1.8"/46mm

Round/Square Insert for Plaster Trim



Round Cutout: 2.1"/54mm
Square Cutout: 2"/50mm

NOTE: When the PEQ0 driver is specified with the EM Emergency Driver, a second junction box will be added.

Driver Chart

5/5

Driver	Driver Wattage	Control Protocol	Dimming Level	Fixtures/Driver Medium Power 9.1W@500mA	Housing (Integral)	Housing (Remote)
S010/RS010	22W	0-10V	1%	1 – 2	NC - IC - CP	LP - IC - CP
RS010	50W	0-10V	1%	1 – 3	-	LP - IC - CP
RS010	100W	0-10V	1%	1 – 6	-	LP - IC - CP
D010/RD010	22W	0-10V	0.1%	1 – 2	NC - IC - CP	LP - IC - CP
RD010	50W	0-10V	0.1%	1 – 4	-	LP - IC - CP
RD010	100W	0-10V	0.1%	1 – 8	-	LP - IC - CP
SPH/RSPH	20W	Triac/ELV	3%	1 – 2	NC - IC - CP	LP - IC - CP
PEQ0/RPEQ0	20W	EcoSystem	0.1%	1 – 2	NC - IC - CP	LP - IC - CP
D2S/RD2S	22W	DALI-2 (DT6)	0.1%	1 – 2	NC - IC - CP	LP - IC - CP
RD2S	50W	DALI-2 (DT6)	0.1%	1 – 4	-	LP - IC - CP
RD2S	100W	DALI-2 (DT6)	0.1%	1 – 6	-	LP - IC - CP
EM	6W	Emergency	–	1	NC - IC - CP	LP - IC - CP
EM	7W, 12W	Emergency	–	1	-	LP - IC - CP

NOTES: An “integral” driver must be installed in an accessible ceiling. Specify remote driver for all non-accessible ceiling types.
Prefix R = Remote