



# ORMA

 **linea**  
**light**  
i-LÈD



# ORMA

For greater design expression, Orma combines a wide offering of light distributions to achieve any affect. Orma can be recessed into the ceiling or wall, as well as recessed in grade using the available installation housings to achieve a consistent appearance and performance in any outdoor environment.

Downlight

Wall

Uplight

## VAST RANGE

Orma is a complete family of recessed luminaires with compact dimensions made of robust and reliable materials, with high degrees of protection: temporary IK10 and IP68, ideal for tight installation spaces. In addition to the round models, the Orma range is enriched with the brand new square shape. The flush-mounted steel flange is completed by the version with a flush-mounted all-glass front and path marker with concentric optics.

The Adjustable versions can be swivelled quickly and easily by turning the screw with a flat screwdriver, without having to open the lamp body and thus risking compromising the watertightness.

Orma has been conceived with a unique versatility of application, offering the designer a wide range of possible combinations of shapes, finishes and optics. Whether flush, all-glass or metal, Orma fits into any environment, even the most unusual, thanks to a choice of eight diameters and an innovative square flange. In terms of technical lighting, new optics packages are introduced: Spot, Flood, Wide Flood, Extra Wide Flood, General, Elliptic, Adjustable Wall Wash optics.



# UPLIGHTS OR DOWNLIGHTS, SIMPLY CHOOSE WHERE TO INSTALL THEM

**All the technology combined in 2 inches**

An uplight with extremely compact dimensions, with a height of up to 2 inches. Orma is designed for easy installation.

2 inch



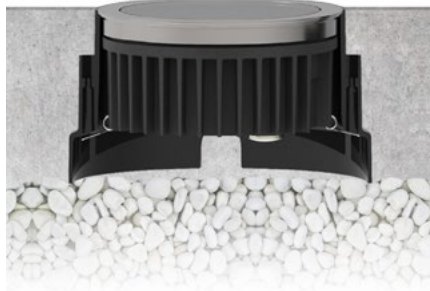
**Orma Adjustable**

Adding the benefits of adjustability to Orma allows the designer to finely adjust the effect. The adjustment of -20°/+20° is made with a flat-blade screwdriver on the exterior of the housing, maintaining the integrity of a sealed optical compartment.

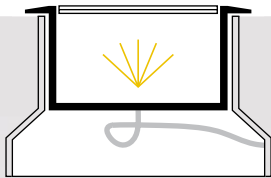


**Locking system**

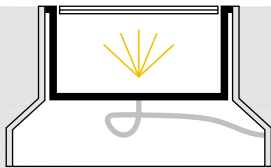
The properly adjusted luminaire is then locked in place with the installation housing, preventing the need to re-aim for the perfect effect.



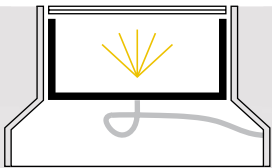
**Trim options**



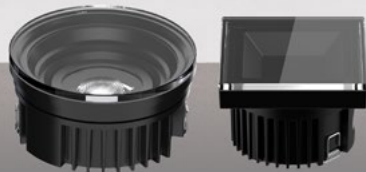
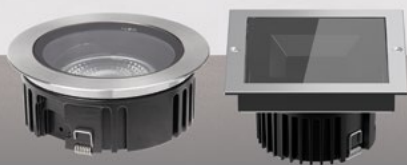
Semi-Flush Trim



Flush Trim



Trimless



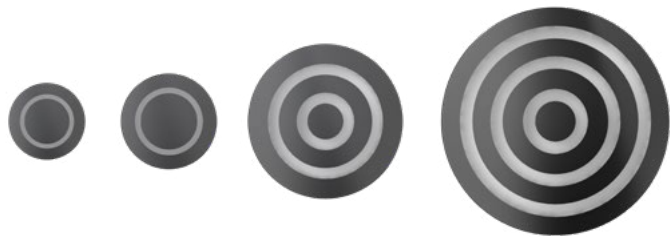
**Blade Optics**

The Blade optics let you light window wells, arches and architraves, emphasizing the architecture and its details. The entirely recess-mounted luminaire lets the window open and close without interference. The light beam is very narrow laterally and then opens up to almost 180° at the front, enhancing the inner face of the openings without glare or light pollution.



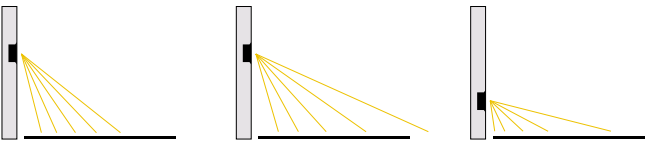
**Concentric Optics**

An exclusive design, recess mounted path marker, flush with the pavement, is capable of creating beautiful effects and giving the paths correct directionality with a sturdy structure capable of withstanding traffic weighing up to 4400 lbs. The family includes four diameters: 1.6", 2.2", 3.4", 5.0".

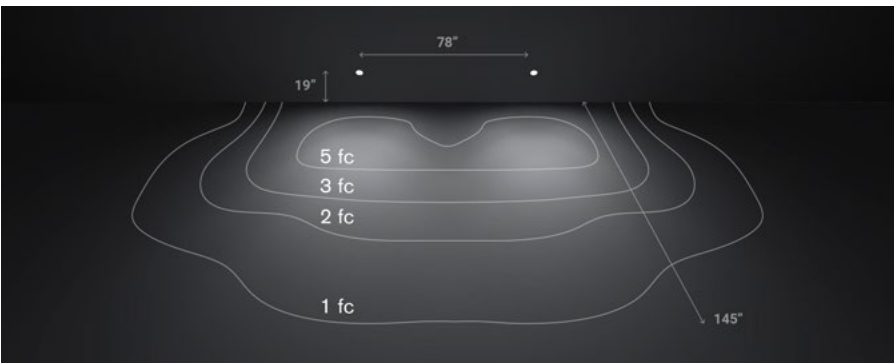


**Adjustable Wall Washer Optics**

Optics conceived for wall and floor recessed installation, they allow the design of perfectly marked and visible luminous paths. The WallWash optics allow the luminous beam to be directed to the intended path without light above the 90 degree plane for maximum visual comfort. The easy adjustment can be made to fine tune the luminous beam.



Thanks to the tilting system built into the optics compartment, Orma Wall Wash is able to adapt to different installation heights, defining the diffusion of the light up to 10 feet away from the source.



**Product installed**

Orma semi-flush Trim  
Optic: Adj. WW  
3000K

ORMA Round range



	Orma Trimless Flush Optics	Orma Trimless Flush Frosted	Orma Trim Optics	Orma Trim Optics RGBW	Orma Trim Frosted	Orma Trim Frosted RGBW	Orma Trim Adjustable Wall Washer		Orma Blade	Orma Concentric	Orma Ceiling
0.9"Ø	1W CC 1.5W CV	1W CC 1.5W CV	-	-	-	-	-		-	-	-
1.6"Ø	-	-	-	-	-	-	-		-	1.5W CV	-
2.1-2.2"Ø	4W CC 5W CV	1W CC 1.5W CV	(Flush Trim) 4W CC 5W CV	-	(Flush Trim) 1W CC 1.5W CV	-	(Flush Trim) 4W CC 5W CV		-	1W CC 1.5W CV	-
2.5"Ø	-	-	(Semi-Flush) 4W CC 5W CV	-	(Semi-Flush) 1W CC 1.5W CV	-	(Semi-Flush) 4W CC 5W CV		-	-	4W CC 5W CV
3.3-3.4"Ø	8W CC 9W CV	2W CC 2.5W CV	(Flush Trim) 8W CC 9W CV	(Flush Trim) 8W CC	(Flush Trim) 2W CC 2.5W CV	(Flush Trim) 8W CC	(Flush Trim) 8W CC 9W CV		(Flush Trim) 8W CC 9W CV	2W CC 2.5W CV	-
3.8"Ø	-	-	(Semi-Flush) 8W CC 9W CV	(Semi-Flush) 8W CC	(Semi-Flush) 2W CC 2.5W CV	(Semi-Flush) 8W CC	(Semi-Flush) 8W CC 9W CV		(Semi-Flush) 8W CC 9W CV	-	8W CC 9W CV
4.9-5.0"Ø	12W CC	4W CC 5W CV	(Flush Trim) 12W CC		(Flush Trim) 4W CC 5W CV	-	(Flush Trim) 12W CC		-	4W CC 5W CV	-
5.4"Ø	-	-	(Semi-Flush) 12W CC		(Semi-Flush) 4W CC 5W CV	-	(Semi-Flush) 12W CC		-	-	12W CC
CCT	2700K 3000K 4000K	2700K 3000K 4000K	2700K 3000K 4000K	RGBW - 3000K RGBW - 4000K	2700K 3000K 4000K	RGBW - 3000K RGBW - 4000K	2700K 3000K 4000K		2700K 3000K 4000K	2700K 3000K 4000K	2700K 3000K 4000K
Optic	Spot Flood Wide Flood Elliptical	General	Spot Flood Wide Flood Elliptical	Narrow Spot Spot Flood	General	General	Asymmetric		Radial	Rings	Spot Flood Wide Flood Elliptical
Adjustable	OR-TL-A	-	OR-FT-A OR-SFST-A OR-SFBT-A	-	-	-	-		-	-	ORC-SFST-A ORC-SFBT-A
Anti-glare filter	Honeycomb Darklight	-	Honeycomb Darklight	-	-	-	-		-	-	Honeycomb Darklight
Finish	Glass/Alu	Glass/Alu	St. Steel/ Brass	St. Steel / Brass	St. Steel/ Brass	St. Steel/ Brass	St. Steel/ Brass		St. Steel/ Brass	Black - White - Grey	St. Steel/ Brass
Driver	Remote	Remote	Remote	Remote	Remote	Remote	Remote		Remote	Remote	Remote

ORMA Square range



	Orma Square Trimless Flush Optics	Orma Square Trimless Flush Frosted	Orma Square Semi-Flush Trim Optics	Orma Square Semi-Flush Trim Frosted
1.4" sq.	2W CC 2.5W CV	1W CC 1.5W CV	-	-
2.4" sq.	4W CC 5W CV	1.5W CC 2W CV	1.5W CV	-
3.3" sq.	-	-	4W CC 5W CV	1.5W CC 2W CV
3.5" sq.	8W CC 9W CV	2W CC 2.5W CV	-	-
4.4" sq.	-	-	8W CC 9W CV	2W CC 2.5W CV
CCT	2700K 3000K 4000K	2700K 3000K 4000K	2700K 3000K 4000K	2700K 3000K 4000K
Optic	Spot Flood Wide Flood	General	Spot Flood Wide Flood	General
Adjustable	ORS-TL-A	-	ORS-SFST-A	-
Anti-glare filter	Honeycomb	-	Honeycomb	-
Finish	Glass/Alu	Glass/Alu	St. Steel/Alu	St. Steel/Alu
Driver	Remote	Remote	Remote	Remote





inter•lux

[inter-lux.com](http://inter-lux.com)