

Periskop RGBW

inter•lux



General: The Periskop outdoor family of flood lights represents a versatile landscaping solution for trees, bushes, sculptures, as well as building facades. Periskop is available in multiple sizes and optics (including a Narrow Spot beam for dramatic effects), with multiple installation solutions available and a selection of accessories to control and shape the beam to your desire.

Fixture Body: Open-pore Anodized and Powder Coated Die-Cast Aluminum.
White RAL9003 / Black RAL9005 / Gray RAL9006 / Green 6031 / Dark Brown (Weathering Steel-like finish).

Glass: Extra-clear Tempered glass.

Bracket: Anodized Aluminum (1.8") or Powder Coated Steel Bracket, Black Painted. Bracket adjustability are the following, based on fixture size:

1.8" size: bracket pivots -95°/+20° on the vertical plane (no horizontal plane adjustment).

3.2" & 4.4" size: bracket pivots -90°/+20° on the vertical plane and swivels +/-43.5° on the horizontal plane (+/-38° horizontal swivel for 3.2" size).

6.2" size: bracket pivots -90°/+5° on the vertical plane and swivels +/-43.5° on the horizontal plane.

Mounting details: Fixture can be installed straight into concrete or onto different surfaces by using one of the several mounting accessories available within the family.

Dimensions/Weight: 1.8" (0.44 lbs) – 3.2" (1.80 lbs) – 4.4" (3.31 lbs) – 6.2" (8.82 lbs)

Driver: 1.8" - 3.2" - 4.4" available with Remote Driver, 120-277V Constant current DMX.
6.2" equipped with Integral Driver, 120-277V + DMX interface.

Wattages: 4.5W (1.8") – 8W (3.2") – 18W (4.4") – 40W (6.2")

Cable: Fixture comes with 3.28' of power cable and it's equipped with TCS safety system to shield circuits from moisture.

IP rating: IP66 for protection against dust and water jets from any angle.

IK rating: IK 05 (1.8") – IK 09 (3.2" & 6.2") – IK 10 (4.4")

ETL Certification: ETL, wet location

Optics: 1.8": Spot – Wide Flood. **3.2":** Ultra Spot 6° – Spot – Medium Wide Flood.

4.4": Narrow Flood – Flood – Wide Flood. **6.2":** Narrow Flood – Flood – Wide Flood.

Color temperatures: RGB – RGBW with 3000K Warm White – RGBW with 4000K Neutral White.

CRI: 80+

Lumen Maintenance: L70 projections tested at Tj 65° C and Ta 25°.

Warranty: 5-year Limited Warranty on fixtures. 1-year Limited Warranty on Remote Drivers.



1.8" (4.5W) SWH



3.2" (8W) SBL



4.4" (18W) SGR



6.2" (40W) SDB



6.2" (40W) SGN

Nominal Lumens RGB/RGBW	1.8"	3.2"	4.4"	6.2"
Red	80	74	177	518
Green	124	121	320	695
Blue	47	21	75	150
White 3K/4K	–	122/153	422/–	818/–

Ordering Information									
PER		F							
Product	Trim/Finish	Type	Size	Wattage/ Operation	Color Temp	Optic	+	Driver ^{3,4}	Cables ^{4,5} Accessories ⁵
PER = Periskop	SWH = Square White SBL = Square Black SGR = Square Gray SDB = Square Dark Brown SGN = Square Green	F = Fixed	18 = 1.8"	4.5 CCDCMX = 4.5W / Remote DMX CC (500mA)	RGB = RGB	SP = Spot (14°) WFL = Wide Flood (50°)		PWR50W-500 ⁴	– Peg E98550 Sand Peg E98624
			32 = 3.2"	8 CCDCMX = 8W / Remote DMX CC (600mA)	R3 = RGBW (3K) R4 = RGBW (4K)	USP = Ultra Spot (6°) SP = Spot (33°) MWFL = Medium Wide Flood (44°)		PWR50W-600 ⁴	– Peg E98549 Tree belt E99802 Anti-glare E-U300023 Snoot E-U300026
			44 = 4.4"	18 CCDCMX = 18W / Remote DMX CC (500mA)	R3 = RGBW (3K)	NFL = Narrow Flood (25°) FL = Flood (35°) WFL = Wide Flood (60°)		PWR50W-500 ⁴	– Peg E98549 Tree belt E99802 Anti-Glare E-U300024 Snoot E-U300027
			62 = 6.2"	40 IDMX = 40W / Integral Driver with DMX interface	R3 = RGBW (3K)	NFL = Narrow Flood (20°) FL = Flood (27°) WFL = Wide Flood (51°)		– E98660 E98661 E98662 E98663 E98986	Peg E98549 Tree belt E99802 Anti-Glare E98968 Snoot E98971

³ Required 18, 32, 44

⁴ See page 2

⁵ Required 62

⁶ See page 3



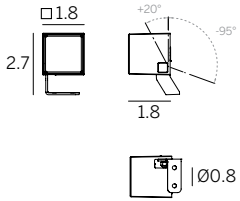
410 381 1497 inter-lux.com answers@inter-lux.com

Inter-lux reserves the right to make technical changes without notice.



Updated 4.2025

1.8" 4.5W 500mA



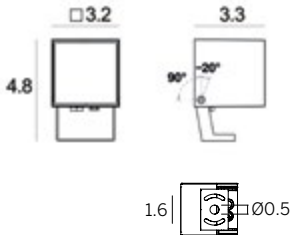
DRIVER OPTIONS (pick one)

C.C. Power supply options (remote only)

PWR50W-500

DMX driver, EldoLED POWERdrive 50W Factory pre-programmed or RDM programmable, DMX control not included/Ordered separately 50W for 1-9 fixtures

3.2" 8W 600mA



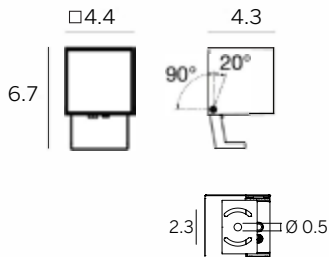
DRIVER OPTIONS (pick one)

C.C. Power supply options (remote only)

PWR50W-600

DMX driver, EldoLED POWERdrive 50W Factory pre-programmed or RDM programmable, DMX control not included/Ordered separately 50W for 1-5 fixtures

4.4" 18W 500mA



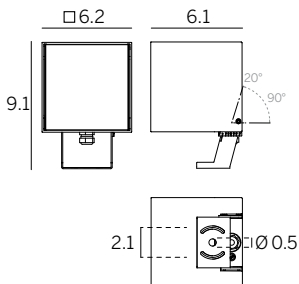
DRIVER OPTIONS (pick one)

C.C. Power supply options (remote only)

PWR50W-500

DMX driver, EldoLED POWERdrive 50W Factory pre-programmed or RDM programmable, DMX control not included/Ordered separately 50W for 1-2 fixtures

6.2" 40W*



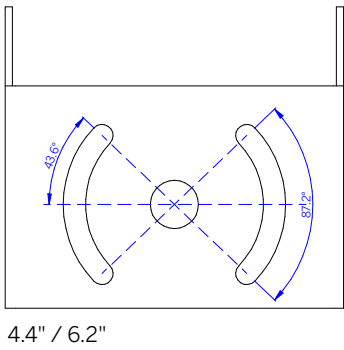
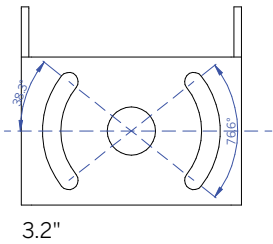
Integral Driver with DMX interface (included)

Cables power+DMX (Required for 6.2" 40 only)

E98660	E98661	E98662	E98663	E98986
39.4" feed cable all in one power + DMX M+F 6 pin shield	196.9" feed cable all in one power + DMX M+F 6 pin shield	39.4" extension all in one power + DMX M+F 6 pin shield	196.9" extension all in one power + DMX M+F 6 pin shield	DMX 120Ω terminator

*Fixture includes in-and-out 9.8" cables with connectors.
One feed cable required per every 12x fixtures.
One DMX Terminator required per every 12x fixtures (or every 32x fixtures if the DMX data is separated from the power).
Extensions required between fixtures. Consult factory for custom extension lengths.

HORIZONTAL PIVOTING BRACKET



ACCESSORIES



E98550

6" Steel Peg
for soft ground
(1.8" ONLY)



E98624

6.3" Steel Peg
for sand
(1.8" ONLY)



E98549

8" Peg for
soft ground
(N/A for 1.8")



E99802

Tree belt
For trees max
diameter of 39"



E-U300023 for 3.2"
E-U300024 for 4.4"
E98968 for 6.2"

Anti-glare Visor



E-U300026 for 3.2"
E-U300027 for 4.4"
E98971 for 6.2"

Anti-glare Snoot