



General: Orma is a compact and shallow family of round LED in-grades suitable to illuminate outdoor architectural elements such as facades, columns as well as landscape and pathway lighting.

The overall depth of roughly 3" including the housing makes it one of the most compact fixtures on the market. The new trimless version combines style and performance in a package that includes multiple beam spreads, color temperatures, the choice to use Constant Current or Constant Voltage and new housings for either concrete or tile applications. Orma' special optics like Blade (spreading light 180°).

Fixture Body: Die-Cast Aluminum 6060, anodized black (15 µm)

Trim: Flush (Stainless Steel) or Semi-Flush (Stainless Steel or Brass) Trim. Brass is untreated and will patina naturally. Extra-clear, Tempered glass.

Mounting/Housing: Black, ABS housings available for both Concrete or Tile Flush installation.

Walk-over: walk-over rated.

Dimensions (Flush – Semi-Flush)/Weight: 3.3"/3.8" (1.1 lbs).

Driver: Remote, 120-277V Dimmable 0-10V or Non-Dim. Available in both Constant Current (CC) and Constant Voltage (CV) to leave flexibility of installation.

CC features: Less susceptible to voltage drop (exceeding 32' distance); Allows for dimming down to 0.1%; Fixtures need to be wired in series.

CV features: Possibility to use higher wattage drivers and feed multiple fixtures with less drivers; fixtures need to be wired in parallel.

Wattages (CC/CV): 8W/9W (3.3" & 3.8").

Cable: Fixture comes with 3.28' of power cable and built-in Aquastop® (anti-wicking) system

IP rating: IP68 for temporary submersion up to 15' depth for up to a maximum of 90 mins.

IK rating: IK 10

ETL Certification: ETL, wet location

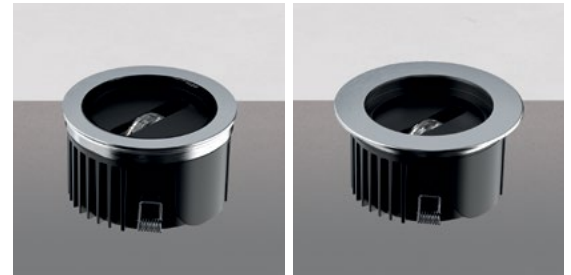
Optics: Fixed, Radial.

Color temperatures: 2700K – 3000K – 4000K.

CRI: 80+

Lumen Maintenance: L70 projections tested at Tj 65° C and Ta 25°.

Warranty: 5-year Limited Warranty on fixtures. 1-year Limited Warranty on Remote Drivers.



3.3" 8W C.C. / 9W C.V.

3.8" 8W C.C. / 9W C.V.



| Delivered Lumens* | | 3.3"/3.8" |
|-------------------|--|-----------|
| Blade/Radial | | 218 |

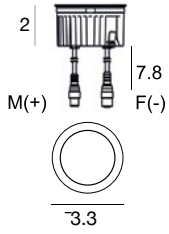
*Values shown for 3000K

| Ordering Information | | | | | | | (Required) | | |
|----------------------|--|------------|-----------|--|--|-------------|------------|--|--|
| Product | Trim | Type | Diameter | Wattage/Operation | Color Temp | Optic | + | Housing ¹ | Driver ¹ |
| OR = ORMA | FT = Flush Trim St. Steel | BL = Blade | 33 = 3.3" | 8 CC = 8W / Constant Current (350mA) 9 CV = 9W / Constant Voltage (24VDC) | 27 = 2700K 30 = 3000K 40 = 4000K | RA = Radial | | E99651 E99563 ² E99856 ² E83252 | CC: ECO30W-350 SOLO50W-350 SOLO100W-350 CV: OT96-D010 OT96-JBX |
| | SFST = Semi-Flush St. Steel Trim SFBT = Semi-Flush Brass Trim | BL = Blade | 38 = 3.8" | 8 CC = 8W / Constant Current (350mA) 9 CV = 9W / Constant Voltage (24VDC) | | | | | |

¹ See page 2

² 3.3" (FT) ONLY

3.3" Blade - 8W DC - 630mA / 9W C.V. DC 24VDC



Housing OPTIONS (pick one)

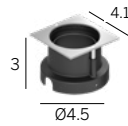
E99651
Concrete Housing
PVC



E99563¹
Round Vandal Resistant Housing
PVC



E99856¹
Square Vandal Resistant Housing
PVC



E83252
Tile Housing
PVC



C.C. Power supply options (remote only)

ECO30W-350
0-10V EldoLED
ECOdrive 30W
for 1-3 fixtures

SOLO50W-350
0-10V EldoLED
SOLOdrive 50W
for 1-4 fixtures

SOLO100W-350
0-10V EldoLED
SOLOdrive 100W
for 1-8 fixtures

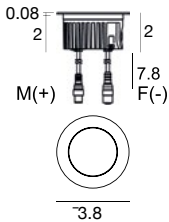
C.V. Power supply options (remote only)

OT96-D010
Osram, 10% 0-10V dim, 96W, 24VDC, 120-277VAC, supplied in a Dry location enclosure

OT96-JBX
Osram, Non-dim 24VDC, 120-277VAC, Wet location

¹ Note: Vandal resistant housings make the Flush Trim fixtures become Semi-flush Trim.

3.8" Blade - 8W DC - 630mA / 9W C.V. DC 24VDC



Housing OPTIONS (pick one)

E99651
Concrete Housing
PVC



E83252
Tile Housing
PVC



C.C. Power supply options (remote only)

ECO30W-350
0-10V EldoLED
ECOdrive 30W
for 1-3 fixtures

SOLO50W-350
0-10V EldoLED
SOLOdrive 50W
for 1-4 fixtures

SOLO100W-350
0-10V EldoLED
SOLOdrive 100W
for 1-8 fixtures

C.V. Power supply options (remote only)

OT96-D010
Osram, 10% 0-10V dim, 96W, 24VDC, 120-277VAC, supplied in a Dry location enclosure

OT96-JBX
Osram, Non-dim 24VDC, 120-277VAC, Wet location