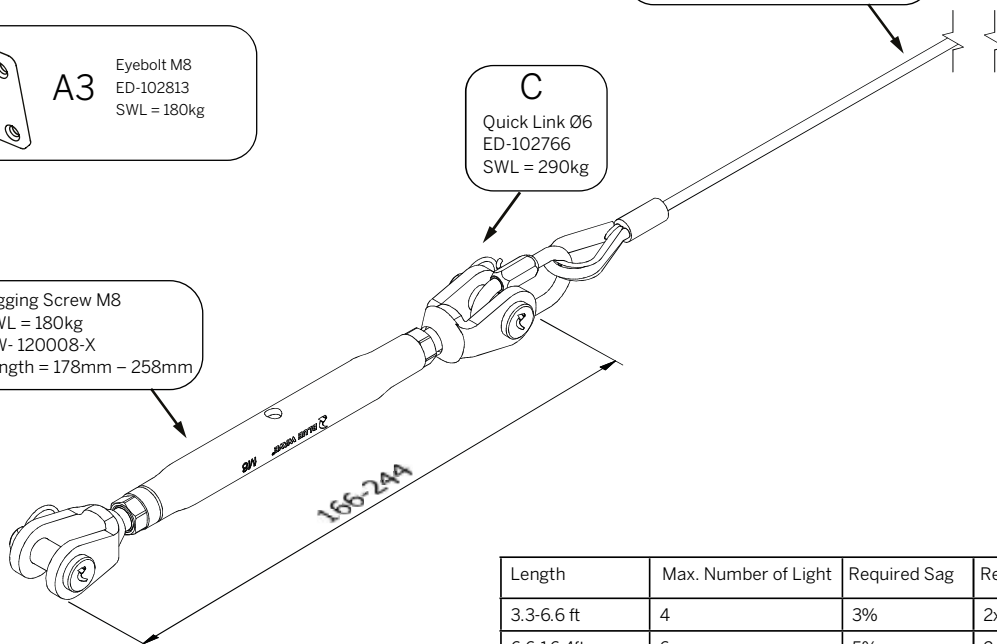
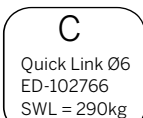
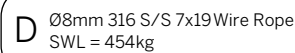


Note:

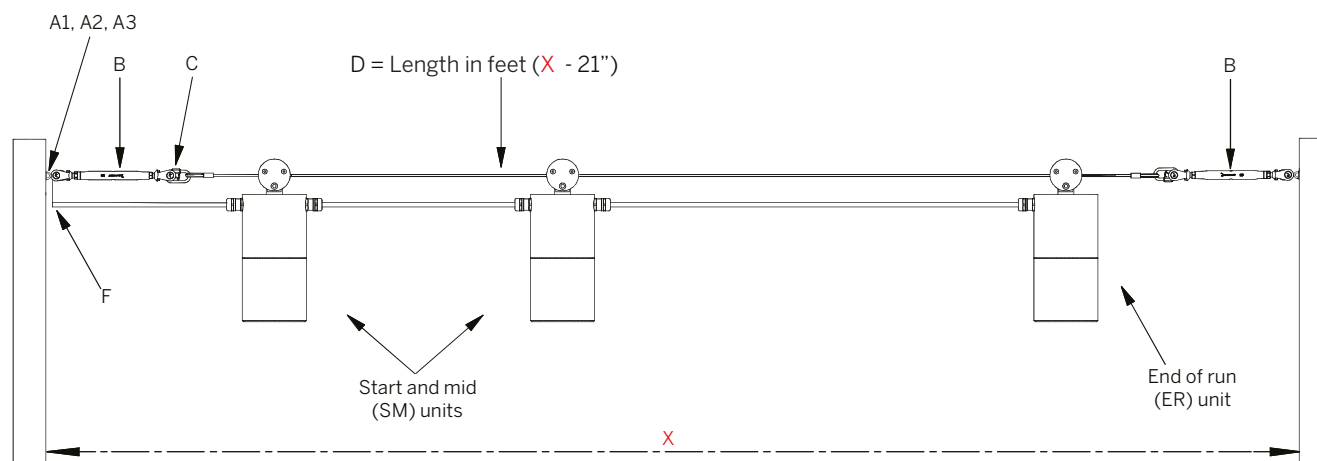
- Local wind loadings, other environmental factors and considerations to be assessed and endorsed by others.
- Anchor point strength assessment and correct anchoring component selection by others.
- The list of components should be treated as a guide and due diligence needs to be given to the exact application.



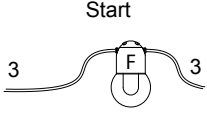
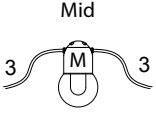
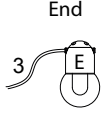
Length	Max. Number of Light	Required Sag	Recommended Bill of Materials
3.3-6.6 ft	4	3%	2xA, 1xB, 2xC, 1xD, 4xE
6.6-16.4ft	6	5%	2xA, 1xB, 2xC, 1xD, 6xE
16.4-32.8ft	6	5%	2xA, 2xB, 2xC, 1xD, 6xE
32.8-49.2ft	8	7%	2xA, 2xB, 2xC, 1xD, 8xE
49.2-65.5ft	12	10%	2xA, 2xB, 2xC, 1xD, 12xE

Sample order code: 4 x 2xA2, 2xB, 1xD 12ft, 6xE

System of Components

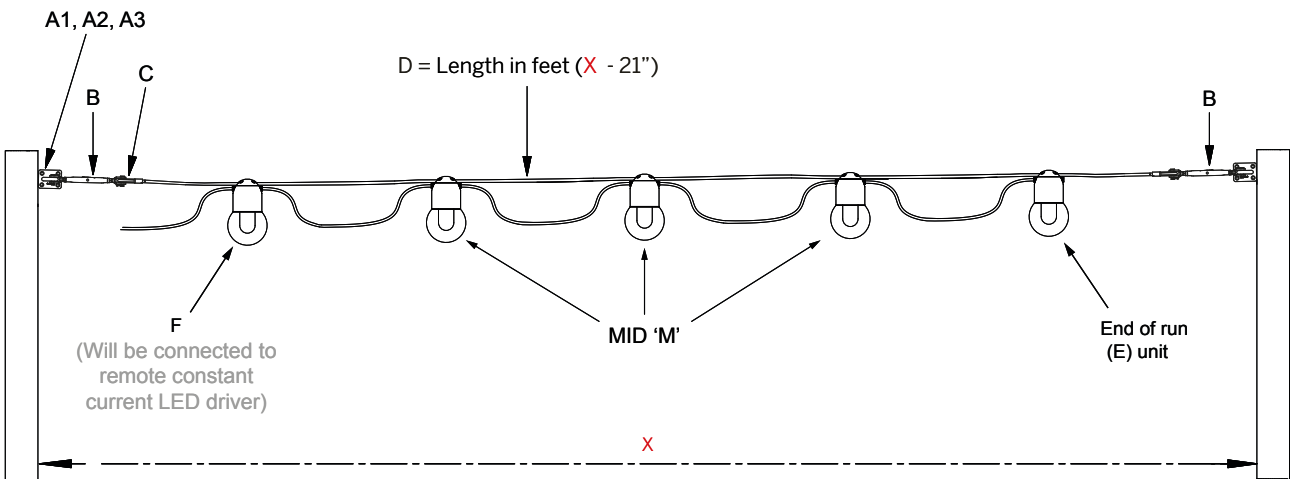


Catenary Suspension

	Start	Mid	End	
				
	1. Feed Cable_QTY	2. MID Fixture_QTY	3. END_QTY	4. Circuits
Catenary run 1	3F_1 *F_*	3M3_3 *M*_*	3E_1 *E_*	1 (5 Max) 2 (10 Max) 4 (20 Max)
Catenary run 2				

- 1. Feed Cable** Specify the length of the feed to the first Mini G-Cat
 3F_1 = 3ft input cable (standard) with a single start fitting.
 F_ = specify the input cable length in feet, followed by the number of
- 2. MID Fixture**
 3M3_3 = 3ft input cable, 3 ft output cable (standard) with 3 MID fittings.
 *M*_QTY = Specify the input cable length, output cable length and quantity of MID(M) fixtures.
- 3. E** (A fixture with only an input cable, used at the end of a circuit.)
 3E_1 = 3ft input cable (standard) with a single end fitting.
 E_ = Specify the input cable length and the quantity of end fittings
- 4. Circuit** (refer to the [Circuit examples](#) page for more information)
 1 = All fitting on one circuit powered via a single driver.
 2 = All fittings on two circuits powered via two drivers.
 3 = All fittings on four circuits powered via two drivers.

System of Components



Catenary Suspension

Refer to Product Details - Suspension Components for more information

	1. A1	2. A2	3. A3	4. B	5. C	6. D	7. E
Catenary System 1	*	*	*	*	*	L***	3***
Catenary System 2							
Catenary System 3							
Catenary System 4							
Catenary System 5							
Catenary System 6							
Catenary System 7							
Catenary System 8							

1. A1 M8 Eye Bolt

* = Enter Qty required

2. A2 M8 Eye Nut

* = Enter Qty required

3. A3 Eye Deck Plate M8

* = Enter Qty required

4. B Rigging Screw M8

* = Enter Qty required

5. C Quick Link

* = Enter Qty required

6. D 6mm Suspension wire Length

L*** = Specify length in feet

7. E Nylon Clip

* = Enter Qty required

System of Components

