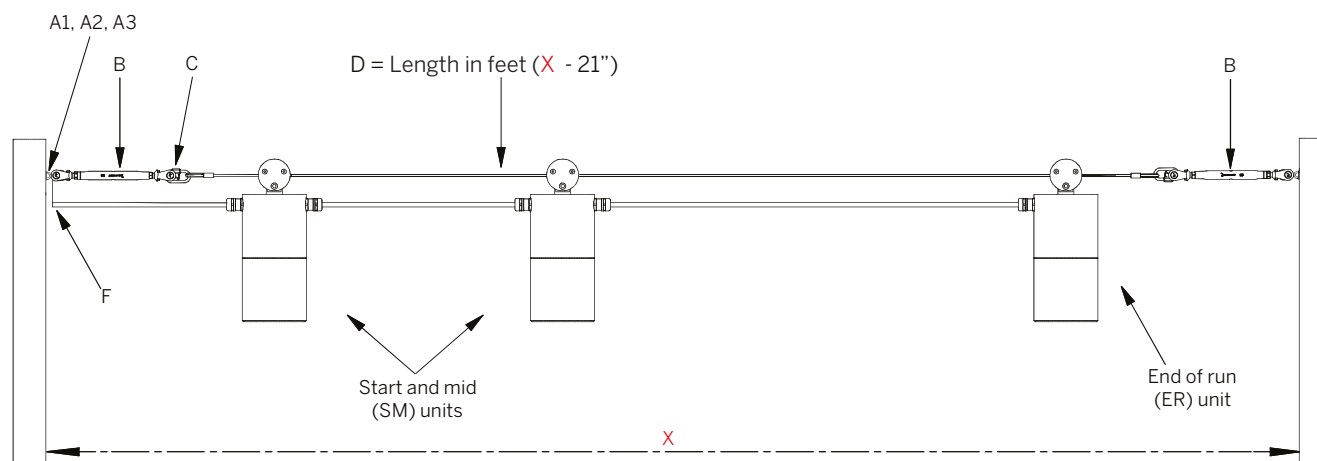
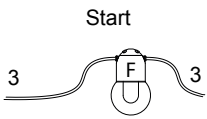
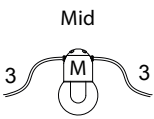
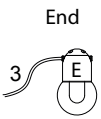


Sample order code: 4 x 2xA2, 2xB, 1xD 12ft, 6xE

System of Components

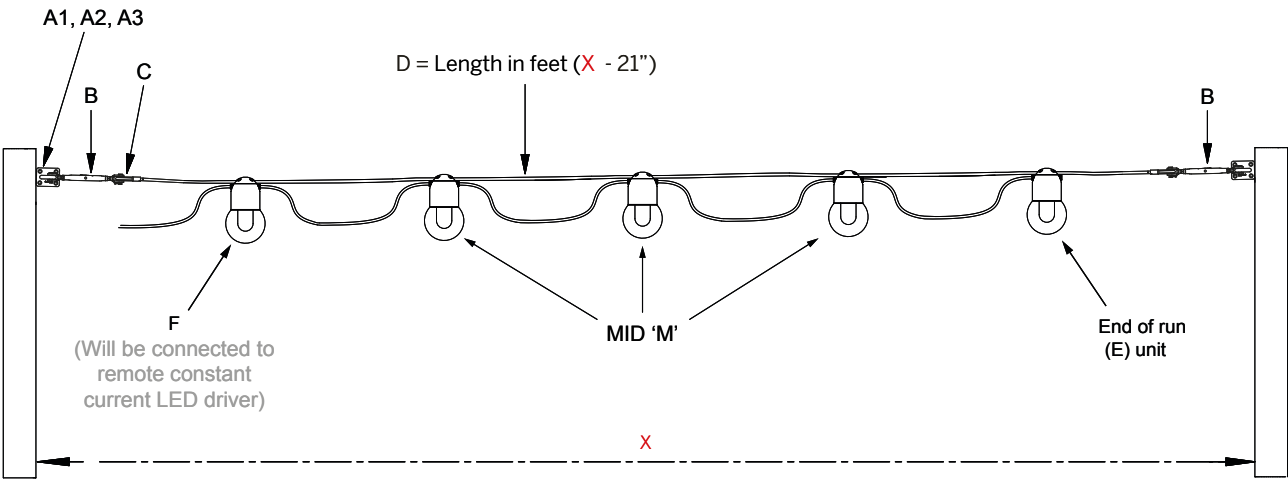


Catenary Suspension

| | | | | |
|----------------|---|---|---|---------------------------------------|
| |  |  |  | |
| | 1. Feed Cable_QTY | 2. MID Fixture_QTY | 3. END_QTY | 4. Circuits |
| Catenary run 1 | 3F_1 *F_* | 3M3_3 *M*_* | 3E_1 *E_* | 1 (5 Max) 2 (10 Max) 4 (20 Max) |
| Catenary run 2 | | | | |

1. Feed Cable Specify the length of the feed to the first Mini G-Cat
3F_1 = 3ft input cable (standard) with a single start fitting.
F_ = specify the input cable length in feet, followed by the number of
2. MID Fixture
3M3_3 = 3ft input cable, 3 ft output cable (standard) with 3 MID fittings.
*M*_QTY = Specify the input cable length, output cable length and quantity of MID(M) fixtures.
3. E (A fixture with only an input cable, used at the end of a circuit.)
3E_1 = 3ft input cable (standard) with a single end fitting.
E_ = Specify the input cable length and the quantity of end fittings
4. Circuit (refer to the Circuit examples page for more information)
1 = All fitting on one circuit powered via a single driver.
2 = All fittings on two circuits powered via two drivers.
3 = All fittings on four circuits powered via two drivers.

System of Components



Catenary Suspension

Refer to Product Details - Suspension Components for more information

| | 1. A1 | 2. A2 | 3. A3 | 4. B | 5. C | 6. D | 7. E |
|-------------------|-------|-------|-------|------|------|------|------|
| Catenary System 1 | * | * | * | * | * | L*** | 3*** |
| Catenary System 2 | | | | | | | |
| Catenary System 3 | | | | | | | |
| Catenary System 4 | | | | | | | |
| Catenary System 5 | | | | | | | |
| Catenary System 6 | | | | | | | |
| Catenary System 7 | | | | | | | |
| Catenary System 8 | | | | | | | |

1. A1 M8 Eye Bolt
* = Enter Qty required
2. A2 M8 Eye Nut
* = Enter Qty required
3. A3 Eye Deck Plate M8
* = Enter Qty required
4. B Rigging Screw M8
* = Enter Qty required
5. C Quick Link
* = Enter Qty required
6. D 6mm Suspension wire Length
L*** = Specify length in feet
7. E Nylon Clip
* = Enter Qty required

System of Components

