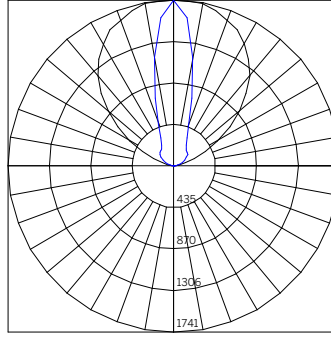


XE-W-OB-...-CV-NFL...

Delivered Lumens - Narrow Flood

		Length [Wattage]				
		14 [7 CV]	25 [13 CV]	37 [20 CV]	48 [26 CV]	60 [33 CV]
CCT	27-	455	910	1382	1835	2294
	30-	474	949	1441	1922	2402
	35-	474	949	1441	1922	2402
	40-	482	964	1463	1950	2514
		Polar Plot / Cone Of Light Multiplier				
		14 [7 CV]	25 [13 CV]	37 [20 CV]	48 [26 CV]	60 [33 CV]
		0.25	0.49	0.75	1.00	1.25



Beam Angle (0-180) = 26.8
Beam Angle (90-270) = 101.6

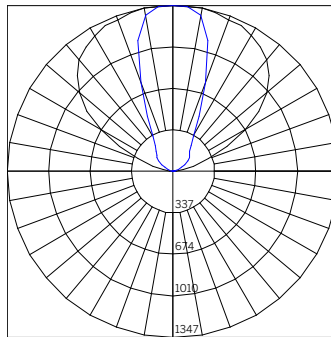
CONE OF LIGHT - 27.8W 3000K Narrow Flood XE-W-OB-48-26-CV-30-NFL*

Throw Distance [Ft]	Illuminance [fc at max cd]	Beam Width [Ft]
20	4	9.5
18	5	8.6
16	7	7.6
14	9	6.7
12	12	5.7
10	17	4.8
8	27	3.8
6	48	2.9
4	109	1.9
2	435	1.0

XE-W-OB-...-CV-MWFL...

Delivered Lumens - Medium Wide Flood

		Length [Wattage]				
		14 [7 CV]	25 [13 CV]	37 [20 CV]	48 [26 CV]	60 [33 CV]
CCT	27-	496	992	1513	2013	2514
	30-	518	1036	1581	2108	2635
	35-	518	1036	1581	2108	2635
	40-	525	1051	1605	2140	2756
		Polar Plot / Cone Of Light Multiplier				
		14 [7 CV]	25 [13 CV]	37 [20 CV]	48 [26 CV]	60 [33 CV]
		0.25	0.49	0.75	1.00	1.25



Beam Angle (0-180) = 43.4
Beam Angle (90-270) = 120.0

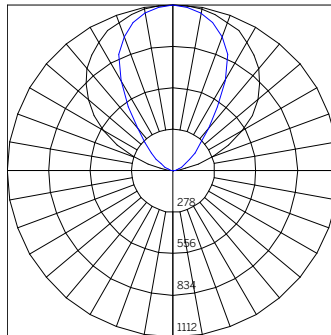
CONE OF LIGHT - 27.8W 3000K Medium Wide Flood XE-W-OB-48-26-CV-30-MWFL*

Throw Distance [Ft]	Illuminance [fc at max cd]	Beam Width [Ft]
20	3	15.9
18	4	14.3
16	5	12.7
14	7	11.1
12	9	9.6
10	13	8.0
8	21	6.4
6	37	4.8
4	84	3.2
2	337	1.6

XE-W-OB-...-CV-EWFL...

Delivered Lumens - Extra Wide Flood

		Length [Wattage]				
		14 [7 CV]	24 [13 CV]	36 [20 CV]	48 [26 CV]	60 [33 CV]
CCT	27-	540	1080	1641	2183	2729
	30-	564	1129	1716	2288	2861
	35-	564	1129	1716	2288	2861
	40-	572	1145	1742	2322	2992
		Polar Plot / Cone Of Light Multiplier				
		14 [7 CV]	24 [13 CV]	36 [20 CV]	48 [26 CV]	60 [33 CV]
		0.25	0.49	0.75	1.00	1.25



Beam Angle (0-180) = 67.8
Beam Angle (90-270) = 118.2

CONE OF LIGHT - 28.6W 3000K Extra Wide Flood XE-W-OB-48-26-CV-30-EWFL*

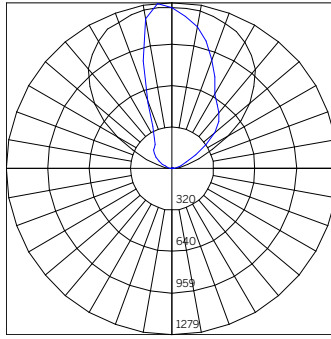
Throw Distance [Ft]	Illuminance [fc at max cd]	Beam Width [Ft]
20	3	26.9
18	3	24.2
16	4	21.5
14	6	18.8
12	8	16.1
10	11	13.4
8	17	10.8
6	31	8.1
4	70	5.4
2	278	2.7

*Polar Plot and Cone of Light are applicable to part number noted; use Multiplication Factor table to approximate other models or refer to online photometry.

XE-W-OB-...-CV-WW...

Delivered Lumens - Wall Washer

		Length [Wattage]				
		14 [7 CV]	24 [13 CV]	36 [20 CV]	48 [26 CV]	60 [33 CV]
CCT	27-	508	1017	1534	2042	2551
	30-	531	1063	1603	2138	2674
	35-	531	1063	1603	2138	2674
	40-	539	1079	1627	2169	2797
		Polar Plot / Cone Of Light Multiplier				
		14 [7 CV]	24 [13 CV]	36 [20 CV]	48 [26 CV]	60 [33 CV]
		0.25	0.50	0.75	1.00	1.25

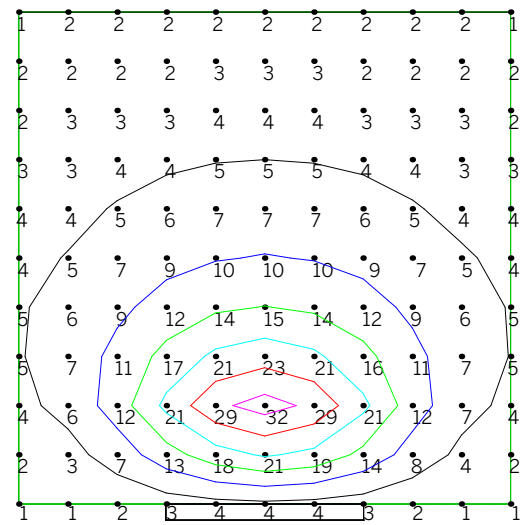


Beam Angle (0-180) = Asymmetric
Beam Angle (90-270) = Asymmetric

ISOILLUMINANCE DIAGRAM - 28.6W 3000K

Wall Washer¹

XE-W-OB-48-26-CV-30-WW²



Value [Fc]	Color	Value [Fc]	Color	Value [Fc]	Color
5	Black	25	Red	45	Teal
10	Blue	30	Magenta	50	Brown
15	Cyan	35	Dark Blue	55	Purple
20	Light Blue	40	Green	60	Olive

- 1 Isoillumination diagram note illuminance values in foot-candles for the fixture part number noted. Illuminance points spaced 1'-0" on center.
- 2 Fixture is offset 2'-0" from the illuminated surface.