

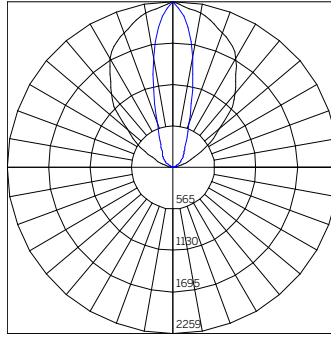
Xenia Recessed Optics – Remote Driver

RECESSED FRAMELESS

XE-RF-F-...-CV-NFL...

Delivered Lumens - Narrow Flood

		Length [Wattage]				
		14 [7 CV]	24 [13 CV]	36 [20 CV]	48 [26 CV]	60 [33 CV]
CCT	27-	607	971	1456	1941	2426
	30-	636	1018	1526	2035	2543
	35-	636	1018	1526	2035	2543
	40-	665	1064	1596	2128	2660
Polar Plot / Cone Of Light Multiplier						
		14 [7 CV]	24 [13 CV]	36 [20 CV]	48 [26 CV]	60 [33 CV]
		0.31	0.50	0.75	1.00	1.25



Beam Angle (0-180) = 27.2
Beam Angle (90-270) = 89.0

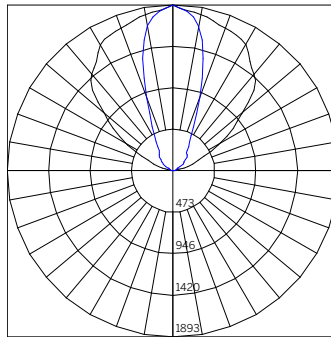
CONE OF LIGHT - 28.6W 3000K Narrow Flood XE-RF-F-48-26-CV-30-NFL'

Throw Distance [Ft]	Illuminance [fc at max cd]	Beam Width [Ft]
20	6	9.7
18	7	8.7
16	9	7.7
14	12	6.8
12	16	5.8
10	23	4.8
8	35	3.9
6	63	2.9
4	141	1.9
2	565	1.0

XE-RF-F-...-CV-MWFL...

Delivered Lumens - Medium Wide Flood

		Length [Wattage]				
		14 [7 CV]	24 [13 CV]	36 [20 CV]	48 [26 CV]	60 [33 CV]
CCT	27-	664	1062	1593	2124	2654
	30-	696	1113	1670	2226	2782
	35-	696	1113	1670	2226	2782
	40-	728	1164	1746	2328	2910
Polar Plot / Cone Of Light Multiplier						
		14 [7 CV]	24 [13 CV]	36 [20 CV]	48 [26 CV]	60 [33 CV]
		0.31	0.50	0.75	1.00	1.25



Beam Angle (0-180) = 38.8
Beam Angle (90-270) = 103.8

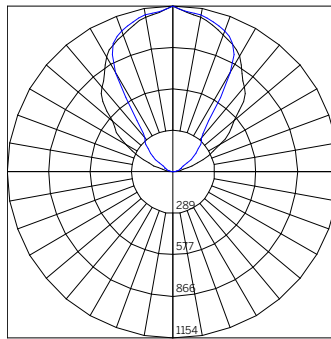
CONE OF LIGHT - 28.6W 3000K Medium Wide Flood XE-RF-F-48-26-CV-30-MWFL'

Throw Distance [Ft]	Illuminance [fc at max cd]	Beam Width [Ft]
20	5	14.1
18	6	12.7
16	7	11.3
14	10	9.9
12	13	8.5
10	19	7.0
8	30	5.6
6	53	4.2
4	118	2.8
2	473	1.4

XE-RF-F-...-CV-EWFL...

Delivered Lumens - Extra Wide Flood

		Length [Wattage]				
		14 [7 CV]	24 [13 CV]	36 [20 CV]	48 [26 CV]	60 [33 CV]
CCT	27-	621	994	1491	1987	2484
	30-	651	1042	1563	2083	2604
	35-	651	1042	1563	2083	2604
	40-	681	1090	1634	2179	2724
Polar Plot / Cone Of Light Multiplier						
		14 [7 CV]	24 [13 CV]	36 [20 CV]	48 [26 CV]	60 [33 CV]
		0.31	0.50	0.75	1.00	1.25



Beam Angle (0-180) = 65.8
Beam Angle (90-270) = 98.2

CONE OF LIGHT - 28.6W 3000K Extra Wide Flood XE-RF-F-48-26-CV-30-EWFL'

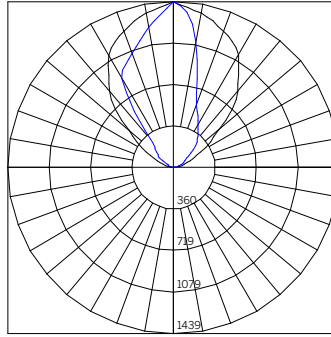
Throw Distance [Ft]	Illuminance [fc at max cd]	Beam Width [Ft]
20	3	25.9
18	4	23.3
16	5	20.7
14	6	18.1
12	8	15.5
10	12	12.9
8	18	10.4
6	32	7.8
4	72	5.2
2	289	2.6

RECESSED FRAMELESS

XE-RF-F-...-CV-WW...

Delivered Lumens - Wall Washer

		Length [Wattage]				
		14 [7 CV]	24 [13 CV]	36 [20 CV]	48 [26 CV]	60 [33 CV]
CCT	27-	588	941	1411	1881	2351
	30-	616	986	1479	1972	2464
	35-	616	986	1479	1972	2464
	40-	645	1031	1547	2062	2578
		Polar Plot / Cone Of Light Multiplier				
		14 [7 CV]	24 [13 CV]	36 [20 CV]	48 [26 CV]	60 [33 CV]
		0.31	0.50	0.75	1.00	1.25

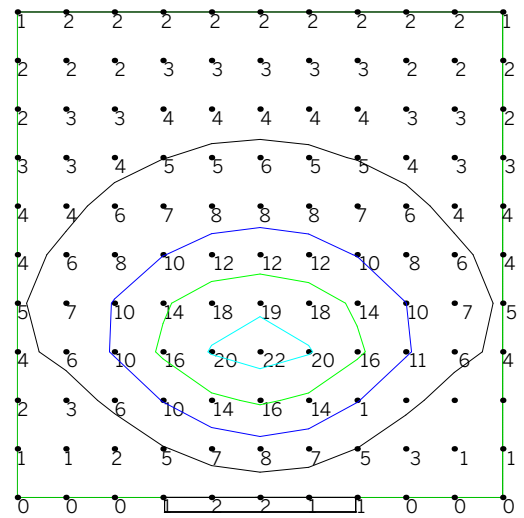


Beam Angle (0-180) = Asymmetric
Beam Angle (90-270) = Asymmetric

ISOILLUMINANCE DIAGRAM - 28.6W 3000K

Wall Washer¹

XE-RF-F-48-26-CV-30-WW



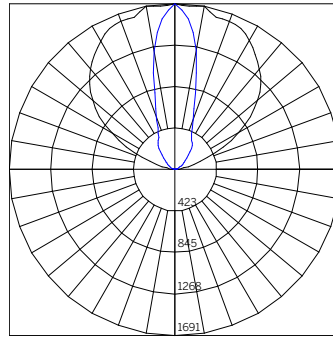
Value [Fc]	Color	Value [Fc]	Color	Value [Fc]	Color
5	Black	25	Red	45	Teal
10	Blue	30	Magenta	50	Brown
15	Cyan	35	Dark Blue	55	Purple
20	Light Blue	40	Green	60	Olive

1 Isoilluminance diagram note illuminance values in foot-candles for the fixture part number noted. Illuminance points spaced 2'-0" on center.

Xenia Recessed Optics – Remote Driver

RECESSED ALUMINUM FRAME

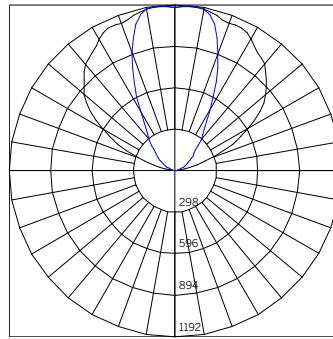
XE-RAF-F....CV-NFL...						
Delivered Lumens - Narrow Flood						
		Length [Wattage]				
		14 [7 CV]	24 [13 CV]	36 [20 CV]	48 [26 CV]	60 [33 CV]
CCT	27-	631	1009	1513	2018	2522
	30-	661	1058	1586	2115	2644
	35-	661	1058	1586	2115	2644
	40-	692	1106	1659	2212	2765
Polar Plot / Cone Of Light Multiplier						
		14 [7 CV]	24 [13 CV]	36 [20 CV]	48 [26 CV]	60 [33 CV]
		0.31	0.50	0.75	1.00	1.25



Beam Angle (0-180) = 28.0
Beam Angle (90-270) = 89.4

CONE OF LIGHT - 28.6W 3000K Narrow Flood XE-RAF-F-48-26-CV-30-NFL*		
Throw Distance [Ft]	Illuminance [fc at max cd]	Beam Width [Ft]
20	6	10.0
18	7	9.0
16	9	8.0
14	12	7.0
12	16	6.0
10	23	5.0
8	35	4.0
6	63	3.0
4	141	2.0
2	565	1.0

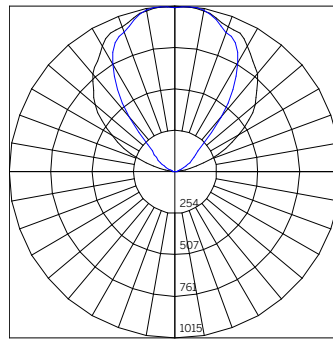
XE-RAF-F....CV-MWFL...						
Delivered Lumens - Medium Wide Flood						
		Length [Wattage]				
		14 [7 CV]	24 [13 CV]	36 [20 CV]	48 [26 CV]	60 [33 CV]
CCT	27-	691	1106	1658	2211	2763
	30-	724	1159	1738	2317	2896
	35-	724	1159	1738	2317	2896
	40-	758	1212	1818	2424	3029
Polar Plot / Cone Of Light Multiplier						
		14 [7 CV]	24 [13 CV]	36 [20 CV]	48 [26 CV]	60 [33 CV]
		0.31	0.50	0.75	1.00	1.25



Beam Angle (0-180) = 42.2
Beam Angle (90-270) = 103.4

CONE OF LIGHT - 28.6W 3000K Medium Wide Flood XE-RAF-F-48-26-CV-30-MWFL*		
Throw Distance [Ft]	Illuminance [fc at max cd]	Beam Width [Ft]
20	5	15.4
18	6	13.9
16	7	12.3
14	9	10.8
12	13	9.3
10	18	7.7
8	29	6.2
6	51	4.6
4	115	3.1
2	460	1.5

XE-RAF-F....CV-EWFL...						
Delivered Lumens - Extra Wide Flood						
		Length [Wattage]				
		14 [7 CV]	24 [13 CV]	36 [20 CV]	48 [26 CV]	60 [33 CV]
CCT	27-	667	1066	1599	2132	2665
	30-	699	1118	1676	2235	2793
	35-	699	1118	1676	2235	2793
	40-	731	1169	1753	2338	2922
Polar Plot / Cone Of Light Multiplier						
		14 [7 CV]	24 [13 CV]	36 [20 CV]	48 [26 CV]	60 [33 CV]
		0.31	0.50	0.75	1.00	1.25



Beam Angle (0-180) = 77.0
Beam Angle (90-270) = 98.6

CONE OF LIGHT - 28.6W 3000K Extra Wide Flood XE-RAF-F-48-26-CV-30-EWFL*		
Throw Distance [Ft]	Illuminance [fc at max cd]	Beam Width [Ft]
20	3	31.8
18	4	28.6
16	4	25.5
14	6	22.3
12	8	19.1
10	11	15.9
8	18	12.7
6	32	9.5
4	72	6.4
2	286	3.2

*Polar Plot and Cone of Light are applicable to part number noted; use Multiplication Factor table to approximate other models or refer to online photometry.

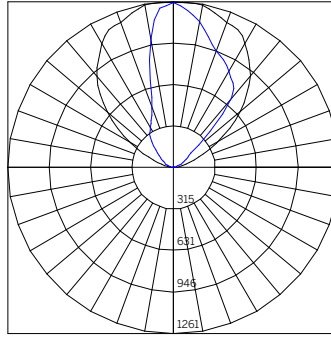
Xenia Recessed Optics – Remote Driver

RECESSED ALUMINUM FRAME

XE-RAF-F-...-CV-WW...

Delivered Lumens - Wall Washer

		Length [Wattage]				
		14 [7 CV]	24 [13 CV]	36 [20 CV]	48 [26 CV]	60 [33 CV]
CCT	27-	619	990	1485	1980	2475
	30-	649	1038	1557	2076	2595
	35-	649	1038	1557	2076	2595
	40-	679	1086	1629	2171	2714
		Polar Plot / Cone Of Light Multiplier				
		14 [7 CV]	24 [13 CV]	36 [20 CV]	48 [26 CV]	60 [33 CV]
		0.31	0.50	0.75	1.00	1.25

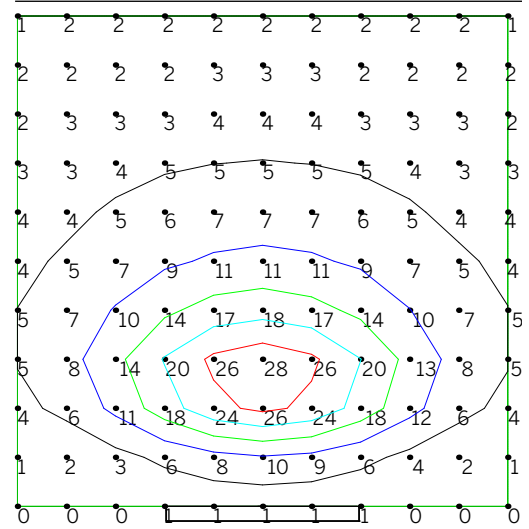


Beam Angle (0-180) = Asymmetric
Beam Angle (90-270) = Asymmetric

ISOILLUMINANCE DIAGRAM - 28.6W 3000K

Wall Washer¹

XE-RAF-F-48-26-CV-30-WW²



Value [Fc]	Color	Value [Fc]	Color	Value [Fc]	Color
5	Black	25	Red	45	Teal
10	Blue	30	Magenta	50	Brown
15	Cyan	35	Dark Blue	55	Purple
20	Light Blue	40	Green	60	Olive

- 1 Isoilluminance diagram note illuminance values in foot-candles for the fixture part number noted. Illuminance points spaced 1'-0" on center.
- 2 Fixture is offset 2'-0" from the illuminated surface.