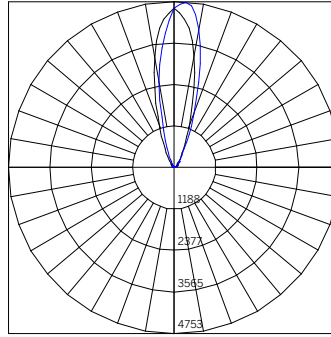


XEP-...-FML-...-NSP...

Delivered Lumens - Narrow Flood

		Length [Wattage]				
		14 [8 IND]	24 [17 IND]	36 [25 ID]	48 [33 ID]	60 [41 ID]
CCT	27-	410	819	1159	1540	1935
	30-	439	878	1242	1659	2076
	35-	439	878	1242	1659	2076
	40-	469	937	1325	1762	2206
		Polar Plot / Cone Of Light Multiplier				
		14 [8 IND]	24 [17 IND]	36 [25 ID]	48 [33 ID]	60 [41 ID]
		0.26	0.53	0.75	1.00	1.25



Beam Angle (0-180) = 25.4
Beam Angle (90-270) = 28.4

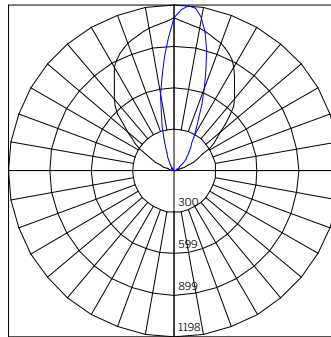
CONE OF LIGHT - 41.3W 3000K Narrow Spot XEP-RAF-FML-48-33-IND-30-NSP'

Throw Distance [Ft]	Illuminance [fc at max cd]	Beam Width [Ft]
20	12	9.0
18	15	8.1
16	19	7.2
14	24	6.3
12	33	5.4
10	48	4.5
8	74	3.6
6	132	2.7
4	297	1.8
2	1189	0.9

XEP-...-FML-...-NFL...

Delivered Lumens - Narrow Flood

		Length [Wattage]				
		14 [8 IND]	24 [17 IND]	36 [25 ID]	48 [33 ID]	60 [41 ID]
CCT	27-	269	538	761	1016	1271
	30-	288	576	816	1089	1363
	35-	288	576	816	1089	1363
	40-	308	615	870	1162	1454
		Polar Plot / Cone Of Light Multiplier				
		14 [8 IND]	24 [17 IND]	36 [25 ID]	48 [33 ID]	60 [41 ID]
		0.26	0.53	0.75	1.00	1.25



Beam Angle (0-180) = 31.4
Beam Angle (90-270) = 91.8

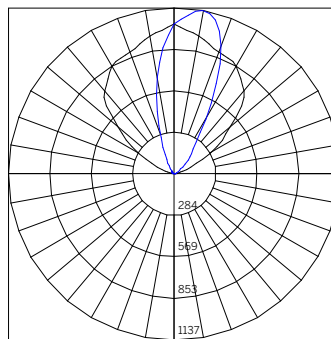
CONE OF LIGHT - 41.3W 3000K Narrow Flood XEP-RAF-FML-48-33-IND-30-NFL'

Throw Distance [Ft]	Illuminance [fc at max cd]	Beam Width [Ft]
20	3	11.2
18	4	10.1
16	5	9.0
14	6	7.9
12	8	6.7
10	12	5.6
8	19	4.5
6	33	3.4
4	75	2.2
2	300	1.1

XEP-...-FML-...-MWFL...

Delivered Lumens - Medium Wide Flood

		Length [Wattage]				
		14 [8 IND]	24 [17 IND]	36 [25 ID]	48 [33 ID]	60 [41 ID]
CCT	27-	300	600	848	1133	1417
	30-	322	643	909	1214	1519
	35-	322	643	909	1214	1519
	40-	343	686	970	1295	1621
		Polar Plot / Cone Of Light Multiplier				
		14 [8 IND]	24 [17 IND]	36 [25 ID]	48 [33 ID]	60 [41 ID]
		0.27	0.53	0.75	1.00	1.25



Beam Angle (0-180) = 34.3
Beam Angle (90-270) = 99.0

CONE OF LIGHT - 41.3W 3000K Medium Wide Flood XEP-RAF-FML-48-33-IND-30-MWFL'

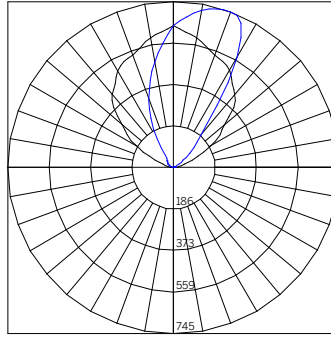
Throw Distance [Ft]	Illuminance [fc at max cd]	Beam Width [Ft]
20	3	12.4
18	4	11.1
16	4	9.9
14	6	8.7
12	8	7.4
10	11	6.2
8	18	4.9
6	32	3.7
4	71	2.5
2	285	1.2

*Polar Plot and Cone of Light are applicable to part number noted; use Multiplication Factor table to approximate other models or refer to online photometry.

XEP-...-FML-...-EWFL...

Delivered Lumens - Extra Wide Flood

		Length [Wattage]				
		14 [8 IND]	24 [17 IND]	36 [25 ID]	48 [33 ID]	60 [41 ID]
CCT	27-	245	490	693	925	1158
	30-	263	525	743	992	1241
	35-	263	525	743	992	1241
	40-	280	560	792	1058	1324
		Polar Plot / Cone Of Light Multiplier				
		14 [8 IND]	24 [17 IND]	48 [33 ID]	60 [41 ID]	60 [41 ID]
		0.27	0.53	1.00	1.25	1.20

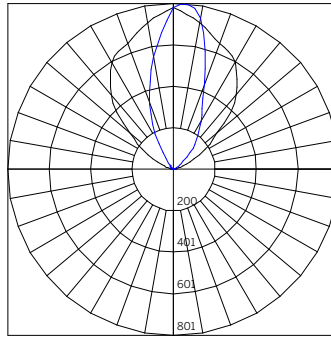


Beam Angle (0-180) = 28.7
Beam Angle (90-270) = 97.6

XEP-...-FML-...-WW...

Delivered Lumens - Wall Washer

		Length [Wattage]				
		14 [8 IND]	24 [17 IND]	36 [25 ID]	48 [33 ID]	60 [41 ID]
CCT	27-	207	413	584	779	975
	30-	221	442	626	835	1045
	35-	221	442	626	835	1045
	40-	236	472	667	891	1115
		Polar Plot / Cone Of Light Multiplier				
		14 [8 IND]	24 [17 IND]	36 [25 ID]	48 [33 ID]	60 [41 ID]
		0.26	0.53	0.75	1.00	1.25



Beam Angle (0-180) = Asymmetric
Beam Angle (90-270) = Asymmetric

CONE OF LIGHT - 41.3W 3000K

Extra Wide Flood

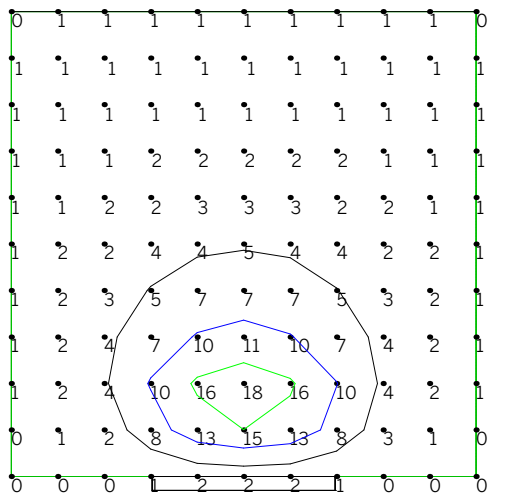
XEP-RAF-FML-48-33-IND-30-EWFL'

Throw Distance [Ft]	Illuminance [fc at max cd]	Beam Width [Ft]
20	2	10.2
18	2	9.2
16	3	8.2
14	4	7.2
12	5	6.1
10	7	5.1
8	12	4.1
6	21	3.1
4	47	2.0
2	187	1.0

ISOILLUMINANCE DIAGRAM - 41.3W 3000K

Wall Washer¹

XEP-RAF-FML-48-33-IND-30-WW²



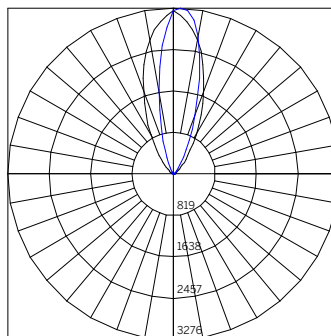
Value [Fc]	Color	Value [Fc]	Color	Value [Fc]	Color
5	Black	25	Red	45	Teal
10	Blue	30	Magenta	50	Brown
15	Green	35	Dark Blue	55	Purple
20	Cyan	40	Dark Green	60	Olive

- 1 Isoilluminance diagram note illuminance values in foot-candles for the fixture part number noted. Illuminance points spaced 1'-0" on center.
- 2 Fixture is offset 1'-0" from the illuminated surface.

XEP-...-FML-...-EL...

Delivered Lumens - Elliptical/Grazer

		Length [Wattage]				
		14 [8 IND]	24 [17 IND]	36 [25 ID]	48 [33 ID]	60 [41 ID]
CCT	27-	373	746	1055	1408	1762
	30-	400	799	1131	1510	1890
	35-	400	799	1131	1510	1890
	40-	427	853	1207	1610	2014
		Polar Plot / Cone Of Light Multiplier				
		14 [8 IND]	24 [17 IND]	36 [25 ID]	48 [33 ID]	60 [41 ID]
		0.26	0.53	0.75	1.00	1.25



Beam Angle (0-180) = 29.1
Beam Angle (90-270) = 42.7

CONE OF LIGHT - 41.3W 3000K

Elliptical/Grazer

XEP-RAF-FML-48-33-IND-30-EL'

Throw Distance [Ft]	Illuminance [fc at max cd]	Beam Width [Ft]
20	2	10.4
18	2	9.4
16	3	8.3
14	4	7.3
12	6	6.2
10	8	5.2
8	13	4.2
6	22	3.1
4	50	2.1
2	201	1.0

*Polar Plot and Cone of Light are applicable to part number noted; use Multiplication Factor table to approximate other models or refer to online photometry.