



General: Guardian is a family of outdoor LED down lights available in different sizes, output and trim finishes. Several beam spreads, color temperatures and recessed casings suitable for brick or concrete installation make Guardian the solution for most outdoor down light needs.

Fixture Body: Open pore anodized and Powder Coated Die-Cast Aluminum, anodized black.

Trim: Open pore anodized and Powder Coated Die-Cast Aluminum. Extra-clear, Tempered glass. Available in Black, Grey and White finish.

Mounting: Outer casing for brick or concrete-mounted installation.

Dimensions/Weight: 4.3" (2.21 lbs) – 6.1" (3.97 lbs) – 9.1" (6.61 lbs)

Driver: Remote, 120-277V Dimmable 0-10V or Non-Dim (4.3" & 6.1"). Integral 120/277VAC Non-Dim (9.1").

Wattages: 7.2W (4.3") – 12.6W (6.1") – 33.6W (9.1")

Cable: Fixture comes with 3.28' of power cable and built-in Aquastop® (anti-wicking) system.

IP rating: IP67 for temporary flooding up to 3.28' depth for up to a maximum of 30 mins.

IK rating: IK 10

ETL Certification: ETL, wet location

Optics: Fixed or Adjustable. Available in Spot – Flood – Wide Flood. Fixed variants can also mount Honeycomb louvers.

Color temperatures: 2700K – 3000K – 4000K.

CRI: 80+

Lumen Maintenance: L70 projections tested at Tj 65° C and Ta 25°.

Warranty: 5-year Limited Warranty on fixtures. 1-year Limited Warranty on Remote Drivers



4.3" (7.2W)

6.1" (12.6W)



9.1" (33.6W)

Fixed Delivered Lumens ¹	4.3"	6.1"	9.1"
SP	540	978	2928
FL	569	1145	3294
WFL	504	1089	2840

¹Values shown for 3000K

Fixed HoneyComb Delivered Lumens ¹	4.3"	6.1"	9.1"
SP	477	651	1593
FL	453	697	1817
WFL	326	493	1182

¹Values shown for 3000K

Adjustable Delivered Lumens ¹	4.3"	6.1"	9.1"
SP	625	914	3123
FL	559	1021	3069
MWFL	–	1183	2979
WFL	573	–	–

¹Values shown for 3000K

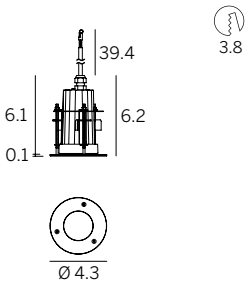
Ordering Information									
Product	Trim/Film	Type	Diameter	Wattage/Operation	Color Temp	Optic	+	Housing ³	Driver (Required) ³
GUA = Guardian	SFWH = Semi-Flush White Trim SFBL = Semi-Flush Black Trim SFGR = Semi-Flush Gray Trim	F = Fixed FHC = Fixed HoneyComb A = Adjustable	43 = 4.3" 61 = 6.1" 91 = 9.1"	7 CC = 7.2W / Constant Current (630mA) 13 CC = 12.6W / Constant Current (350mA) 34 IND = 33.6W / Integral 120/277VAC Non-Dim	27 = 2700K 30 = 3000K 40 = 4000K	SP = Spot FL = Flood MWFL = Medium Wide Flood ¹ WFL = Wide Flood ²		E99673 (43) E99674 (61) E99675 (91)	CC: ECO30W-XXX SOLO50W-XXX SOLO100W-XXX

¹ 6.1" & 9.1" Adj. ONLY.

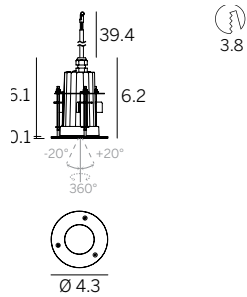
² N/A for 6.1" & 9.1" Adj.

³ See page 2

4.3" 7.2W CC



fixed



adjustable

DRIVER OPTIONS (pick one)

C.C. Power supply options (remote only)

ECO30W-630
0-10V EldoLED
ECOdrive 30W
for 1-3 fixtures

SOLO50W-630
0-10V EldoLED
SOLOdrive 50W
for 1-4 fixtures

SOLO100W-630
0-10V EldoLED
SOLOdrive 100W
for 1-8 fixtures

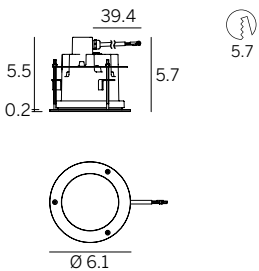
RECESSED HOUSING

E99673

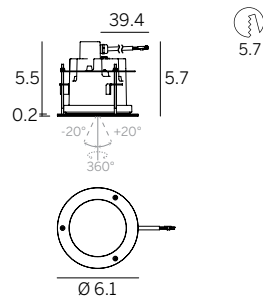
Housing for
brick or concrete
mounted
installation



6.1" 12.6W CC



fixed



adjustable

DRIVER OPTIONS (pick one)

C.C. Power supply options (remote only)

ECO30W-350
0-10V EldoLED
ECOdrive 30W
for 1 fixture

SOLO50W-350
0-10V EldoLED
SOLOdrive 50W
for 1-2 fixtures

SOLO100W-350
0-10V EldoLED
SOLOdrive 100W
for 1-4 fixtures

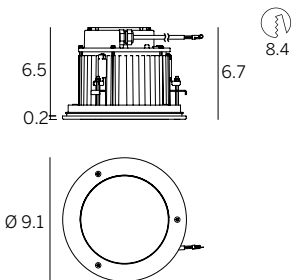
RECESSED HOUSING

E99674

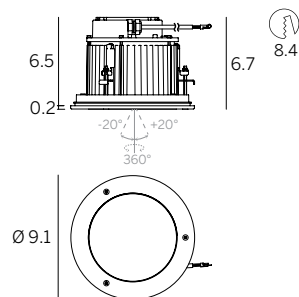
Housing for
brick or concrete
mounted
installation



9.1" 33.6W IND



fixed



adjustable

INTEGRAL DRIVER

RECESSED HOUSING

E99675

Housing for
brick or concrete
mounted
installation

