



exterior linear contents

Archiline 6



**Archiline\_F**  
Length  
13/20/39"  
12 W/ft  
136 lm/W\*



**Archiline\_I**  
Length  
15/22/42"  
12 W/ft  
136 lm/W\*



**Archiline Pro\_W**  
Length  
14/20.3/40"  
26W/ft  
113 lm/W\*



**Archiline\_F  
Anti-glare**  
Length  
13/20/39"  
12 W/ft  
140 lm/W\*



**Archiline\_I  
Anti-glare**  
Length  
15/22/42"  
12 W/ft  
140 lm/W\*



**Archiline\_FL**  
Length  
13/20/39"  
4 W/ft  
138 lm/W\*



**Archiline Pro\_I**  
Length  
23/49.2"  
26W/ft  
113 lm/W\*



**Archiline\_A**  
Length  
15/22/41/61"  
12 W/ft  
122 lm/W\*



**Archiline\_W**  
Length  
13/24/36/48/60"  
12 W/ft  
126 lm/W\*



**Archiline\_A  
Anti-glare**  
Length  
15/22/41"  
12 W/ft  
140 lm/W\*



**Archiline\_W  
Anti-glare**  
Length  
13/24/36/48"  
12 W/ft  
140 lm/W\*

Xenia 10



**Xenia\_W**  
Length  
14/25/37/48/60"  
7 W/ft  
121 lm/W\*



**Xenia\_W Pro**  
Length  
14/25/37/48/60"  
8 W/ft  
112 lm/W\*



**Xenia\_A**  
Length  
14/24/36/48/60"  
7 W/ft  
123 lm/W\*



**Xenia\_A Pro**  
Length  
14/24/36/48/60"  
8 W/ft  
129 lm/W\*

Paseo 12



**Paseo\_L**  
Length  
20/45/57"  
6 W/ft  
109 lm/W\*



**Paseo\_L  
Anti-glare**  
Length  
20/45"  
6 W/ft  
109 lm/W\*



**Paseo\_X**  
Length  
23/45"  
7 W/ft  
131 lm/W\*

Dirigo 14

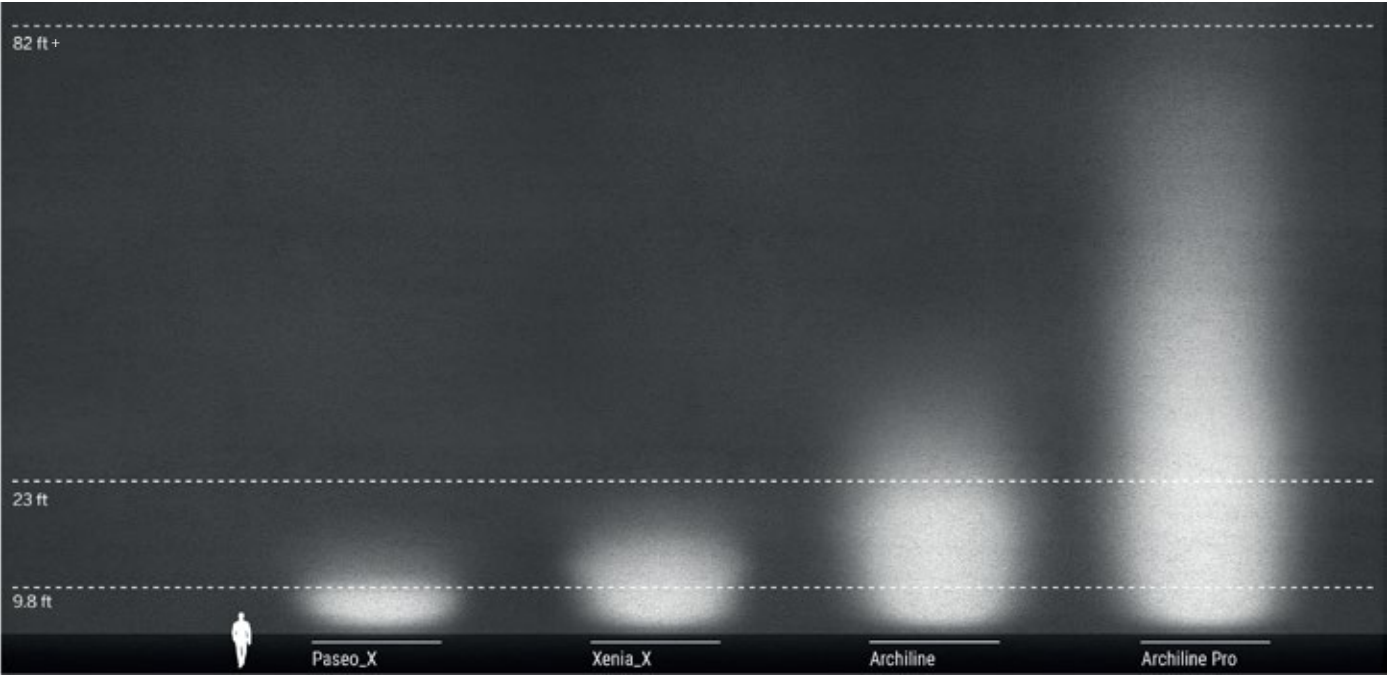


**Dirigo**  
Length  
40"  
14 W/ft  
100 lm/W\*

Refer to specific product pages for RGBW options  
\*Source lumens shown for 3000K

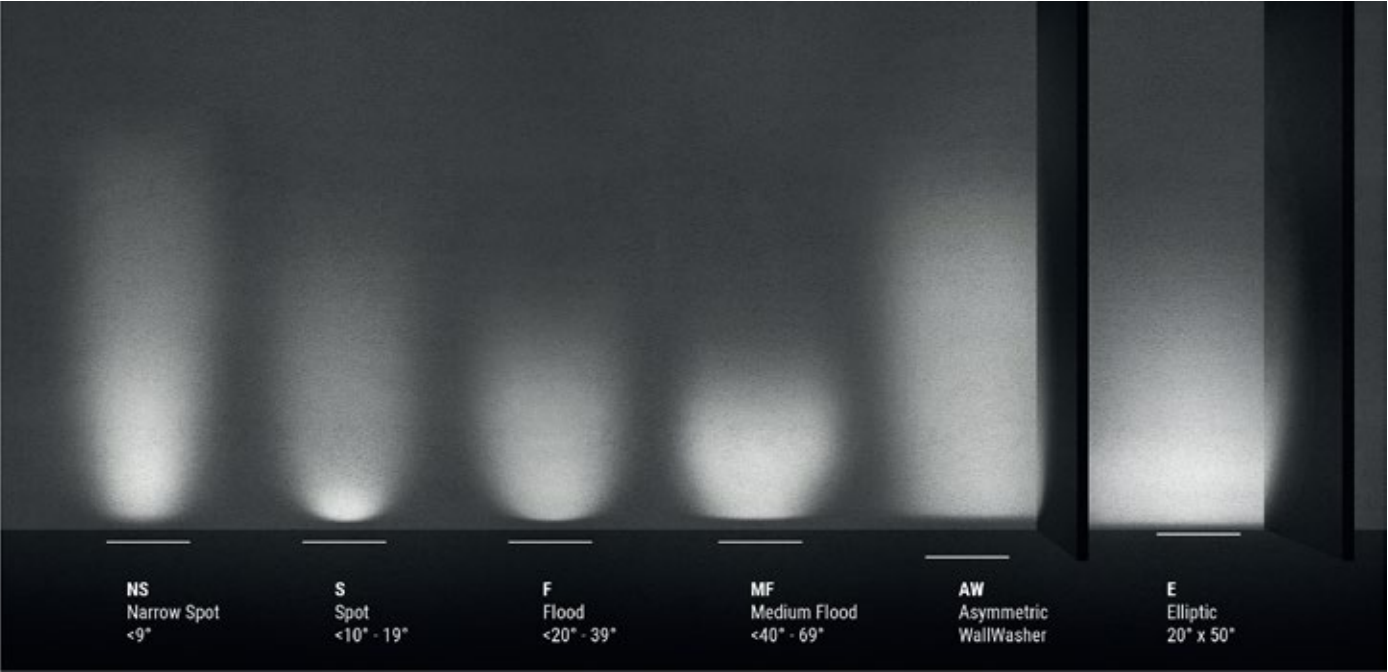


# exterior linear range



## Performance for every need

Each family of lights includes different outputs to meet the largest possible range of requirements. Paseo, Xenia, Archiline and Archiline PRO offer a particularly wide selection.



## Optical range

The Linear Lights series offers specific products for every context, and lighting solutions that vary depending on the optics you choose. There are spots, narrow spots for small or very small angles, various floods, and diffuse and wall washer lights. The Elliptic 20°x50° gives an oval grazing wash for tall narrow walls, and Asymmetric provides a directional beam that washes the wall evenly.

Fire brigade museum | Riga, Latvia



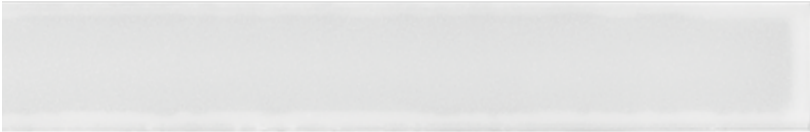


# Archiline

Archiline\_F



Archiline\_FL



Archiline\_A



Archiline\_I



Archiline\_I Pro



Archiline\_W



Archiline\_W Pro



Click images to go to product pages

**ARCHILINE\_F** trimless with extra-clear 0.5-inch tempered glass and black screenprinted optical compartment, with or without darklight +RGBW. Designed for wall lighting, and can be placed in continuous lines.

**ARCHILINE\_FL** trimless with extra-clear 0.5-inch tempered glass and white ceramic varnish, monochrome or RGBW versions. Designed for path marking in parks, squares, drives, and public spaces. Can be placed in continuous lines.

**ARCHILINE\_A** 6060 aluminum alloy flange with extra-clear 0.5-inch tempered glass and black-screenprinted optical compartment, with or without darklight +RGBW. Designed for wall lighting.

**ARCHILINE\_I** AISI 316L stainless steel flange with extra-clear 0.5-inch tempered glass and black-screenprinted optical compartment, with or without darklight +RGBW. Designed for wall lighting.

**ARCHILINE\_I Pro** recessed with stainless steel frame (AISI 316L) comes with Dark Light glare control system incorporated and allows for an unprecedented 160' illumination of facades. PRO is available also in RGBW with a Quad-Chip LED that blends colors seamlessly while pushing light up to new limit for such fixtures.

**ARCHILINE\_W** The surface mount and wall mount is made from 6060 aluminum extrusion with 10-micron anodized protective finish. The adjustable brackets are made from graduated stainless steel. Features maximum glare control and multiple optics

**ARCHILINE\_W Pro** Wall mounted comes with Dark Light glare control system incorporated and allows for an unprecedented 160' illumination of facades. PRO is available also in RGBW with a Quad-Chip LED that blends colors seamlessly while pushing light up to new limit for such fixtures.

Parliament Building | Muscat, Oman





Archiline Recessed range

	Archiline_F 12.6 - 39.4 in 13/20/40 W	Archiline_F Anti-glare 12.6 - 39.4 in 12/20/40 W	Archiline_FL 12.6 - 39.4 in 3.5/6/12 W	Archiline_A 14.6 - 41.4 in 13/20/40/59 W	Archiline_A Anti-glare 14.6 - 41.4 in 12/20/40 W	Archiline_I 14.8/22.2/41.5 in 13/20/40 W	Archiline_I Anti-glare 14.8 - 41.9 in 14.8/22.2/41.5 W	Archiline Pro_I 23/49.2 in 37/80.5W
powerLED	2700K 3000K 3500K 4000K RGBW	2700K 3000K 3500K 4000K	2700K 3000K 3500K 4000K RGBW	2700K 3000K 3500K 4000K RGBW	2700K 3000K 3500K 4000K RGBW	2700K 3000K 3500K 4000K RGBW	2700K 3000K 3500K 4000K	2700K 3000K 4000K
Optics	Narrow S. Spot Medium Fl. Flood Elliptic Asymmetric	Spot Medium Fl. Flood Elliptic	General	Narrow S. Spot Medium Fl. Flood Elliptic Asymmetric	Spot Medium Fl. Flood Elliptic	Narrow S. Spot Medium Fl. Flood Elliptic Asymmetric	Spot Medium Fl. Flood Elliptic	Narrow Sp. Spot Flood Elliptic
Driver	120/277V 0-10V	120/277V 0-10V	120/277V 0-10V	120/277V 0-10V	120/277V 0-10V	120/277V 0-10V	120/277V 0-10V	120/277V 0-10V

Archiline Recessed RGBW range

	Archiline_F RGBW 12.6 - 39.4 in 13/22/44 W	Archiline_FL RGBW 12.6 - 39.4 in 8.5/14/24 W	Archiline_A RGBW 14.6 - 41.4 in 13/22/44 W	Archiline_I RGBW 14.8/22.2/41.5 in 113/22/44 W	Archiline Pro_I RGBW 23/49.2 in 46/84 W
powerLED	RGBW-Q (4000K) RGBW-V (3000K)	RGBW-Q (4000K) RGBW-V (3000K)	RGBW-Q (4000K) RGBW-V (3000K)	RGBW-Q (4000K) RGBW-V (3000K)	RGBW-Q (4000K) RGBW-V (3000K)
Optics	Spot Medium Fl. Flood Elliptic Asymmetric	General	Spot Medium Fl. Flood Elliptic Asymmetric	Spot Medium Fl. Flood Elliptic Asymmetric	Narrow Sp. Spot Medium Fl. Flood Elliptic
Driver	120/277V + DMX	120/277V + DMX	120/277V + DMX	120/277V + DMX	120/277V + DMX

High-quality construction

Archiline bodies are made from extruded 6060 aluminum alloy Anodized to 10 microns.

These two processes provide superior passive heat dissipation and, most importantly, higher corrosion resistance.

The caps are diecast.



Safety systems


We have developed a variety of corrosion protection technology to maximize the lifespan of our lights.

They also have overtension and electrical discharge protection, TCS® to shield their circuits from moisture, and AquaStop® water protection.



The perfect mix

Combined-optic RGBW technology makes color mixing better and more uniform. This takes place within the optics, using treated lenses optimized for maximum efficiency and high-performance RGBW LEDs. One diode combines pure warm or natural white and red, green and blue, mixing the colors better than traditional systems and creating an infinite variety of shades, as well as obtaining pure mwhite without the influence of the RGB. The optical compartment is screenprinted in black, with darklight screening giving perfect control over glare, sectioning the beam to eliminate the direct outward component and lighting only the wall.



Archiline Wall range

	Archiline_W 12.6 - 48 in 13/24/37.5/ 48.5 W	Archiline_W Anti-glare 12.6 - 48 in 12/24/36/48.5 W	Archiline_W RGBW 12.6 - 48 in 13/26/40/53 W	Archiline Pro_W 14/20.3/40 in 32/46/80W	Archiline Pro_W RGBW 14/20.3/40 in 25/37/74W
powerLED	3000K 3500K 4000K	3000K 3500K 4000K	RGBW+W RGBW+N	2700K 3000K 4000K	RGBW+W RGBW+N
Optics	Narrow Spot Spot Medium Flood Flood Elliptic Asymmetric	Spot Medium Flood Flood Elliptic	Spot Medium Flood Flood Elliptic Asymmetric	Spot Flood Elliptic Narrow Spot	Spot Medium Flood Flood Wide Flood Elliptic
Driver	120/277V 0-10V	120/277V 0-10V	120/277V + DMX	120/277V 0-10V	120/277V + DMX

Optics

The Archiline range has optics for every type of design need.

SPOT and NARROW SPOT for accent lighting

FLOOD and MEDIUM FLOOD for soft lighting of parts of walls

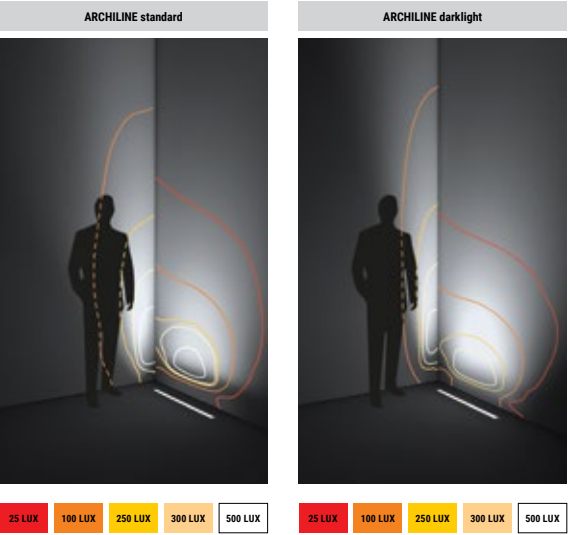
ELLIPTIC 20°x50°, which projects an oval beam, ideal for grazing illumination of high and narrow walls

ASYMMETRIC for a wallwasher effect.

Other features:

Darklight versions, which section the beam by eliminating the direct component to the exterior and lighting only the wall.

Ability to create continuous lines without affecting the evenness of the light near the ends of each module. In the Archiline\_F no-darklight versions, the diodes are arranged so as to maintain the same distance between each one, and between the last ones at each end.



College Place d'Armes | Yverdon-les-Bains, Switzerland



# Xenia

The Xenia family comprises a very wide range of linear lights, with numerous configurations for every lighting need. They provide a high-performance solution for lighting professionals, offering reliable safety technology including OVP, ESD, TCS® and AquaStop®. There is also a wide choice of topLED and powerLED outputs, and optics. The range is available in warm white, natural white, and RGBW versions.

## IP66



Xenia\_W Top LED



Xenia\_W Power LED



Xenia\_W PRO Power LED

Via Broletto, ESA engineering | Milan, Italy



Click images to go to product pages

# Xenia range

	Xenia_W	Xenia_W Pro	Xenia_A	Xenia_AL	Xenia_A Pro
	14.4 - 60.2 in 6.5/13/20/26/33 W	20.2 - 57.2 in 8/15/23/32/37 W	14.1 - 59.8 in 6.5/13/20/26/33 W	14.1 - 59.8 in 2/3.5/5.5/7/9 W	14.1 - 59.8 in 8/15/23/32/37 W
topLED	2700K 3000K 3500K 4000K RGBW+W RGBW+N	-	2700K 3000K 3500K 4000K RGBW+W RGBW+N	2700K 3000K 3500K 4000K	-
powerLED	-	2700K 3000K 3500K 4000K RGBW(3K) RGBW(4K)	-	-	2700K 3000K 3500K 4000K RGBW(3K) RGBW(4K)
Optics	Narrow Flood Flood Wide Flood Asymmetric General	Narrow Spot Narrow Flood Flood Wide Flood Elliptic Asymmetric	Narrow Flood Flood Wide Flood Asymmetric	General	Narrow Spot Narrow Flood Flood Wide Flood Elliptic Asymmetric
Remote Driver	24V	-	24V 24V + DMX (RGBW)	24V	-
Integral Driver	120V On/Off	120V On/Off 120V + DMX (RGBW)	120V + DMX (RGBW)		120V On/Off 120V + DMX (RGBW)

### High-quality construction

Xenia is made from very high-quality materials and components. Because of the ways in which they are used, these lights must be durable and able to maintain their performance in temperatures ranging from a glacial -20°C to a sultry +60°C. They are also highly corrosion resistant, thanks to their use of 6060 aluminum alloy and 10-micron anodization.

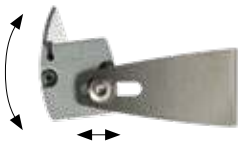
### Safety systems

We have developed a variety of corrosion protection technology to maximize the lifespan of our lights. They also have overvoltage and electrical discharge protection, TCS® to protect their circuits from moisture.



### Wall-mounted versions

- Multiple fixing sizes for made-to measure grazing installations
- Graduated body rotation
- Anti-glare shield
- Five sizes, from 14.2 to 59.1 inch
- Optics: Flood, Narrow Flood , Wide Flood, Asymmetric, General



### Recessed versions

- Extra-thin housing: frame only 0.1 inch □
- Housing has no end caps, so multiple lights can be positioned in series to create continuous lines.
- The end cap can then be placed at the end of the run and adapted to the housing so that the whole of the body is enclosed.
- Five sizes, from 14.2 to 59.1 inch
- Optics: Flood, Narrow Flood, Wide Flood, Asymmetric, General





Paseo

Click images to go to product pages



Paseo\_L General



Paseo\_L Anti-glare



Paseo\_L RGBW



Paseo\_X



Paseo\_RGBW

Paseo is a highly functional and versatile range of lights. Paseo\_L, with a topLED source and antiglare and RGBW versions, is designed for architectural illumination. It has a range of optics, from flood to asymmetric and diffuse. Paseo\_X has a powerLED source for high-output illumination, and and is available with flood, medium flood, asymmetric, elliptic and diffuse optics and a wide selection of control options in the standard and RGBW versions.

IP67



Agemar | Athens, Greece

Paseo range

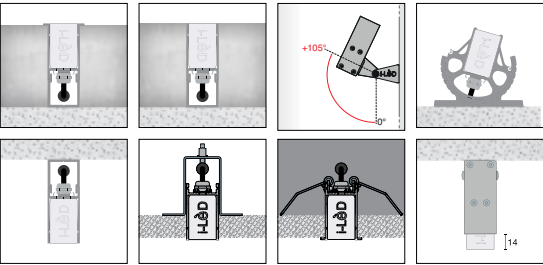
	Paseo_L 20.2 - 57.2 in 6/13/19 W	Paseo_L Anti-glare 20.2 - 57.2 in 6/13/19 W	Paseo_L RGBW 20.2 - 57.2 in 6/13/19 W	Paseo_X 20.2 - 57.2 in 7.5/15 W	Paseo_X RGBW 20.2 - 57.2 in 7.5/15 W
topLED	2700K 3000K 3500K 4000K	2700K 3000K 3500K 4000K	RGBW	-	-
powerLED	-	-	-	2700K 3000K 3500K 4000K	RGBW+W
Optics	Medium Flood Asymmetric General	Medium Flood Asymmetric	General	Narrow Spot Spot MediumFlood Flood Elliptic Asymmetric General	Elliptic
Remote Driver	24V	24V	24V + DMX	-	-
Integral Driver	120V On/Off	120V On/Off	-	120V On/Off 120V + 0-10V	120V + DMX

Minimal size

The new Paseo models are even thinner and more versatile, with heights of 0.9 to 1.5 inch that adapt easily to any design need. Their very small size is combined with simple, minimalist aesthetics.



The Paseo range comes with a wide choice of optics, lengths, color temperatures, and controls. These include 0-10V, and RGBW DMX and RGB pixel for dynamic lighting management and spectacular architectural illumination. The housings and numerous accessories mean Paseo can be recessed or fitted to a wall, ceiling or floor.



Maximum protection

An electrostatic discharge occurs when there's a transfer of charges between two bodies that are close or in contact with each other. This often damages electronics and LED modules. Paseo fixtures with integral drivers come with an up to 4KV electrostatic discharge (ESD) protection.

Ultrasonic-welded caps offer perfect mechanical resistance and light continuity

Thermoplastic PUR cables with IP67 4 pin or 5-pin M12 quick-connectors

Steel spring clips allow you to easily install the Paseo profile into the outer casing

TCS® valve, to avoid the formation of humidity in the profile 4KV electrostatic discharge (ESD) protection.



# Dirigo

The Dirigo series is a new lighting concept for outdoor spaces. Available as single elements or modules to create continuous lines, it is a ground profile designed to illuminate walkways and other foot traffic areas, and be placed along paths and walls to mark out routes. It can be safely walked on, and its distinctive and award-winning design features a hidden light source that creates controlled, ground-hugging and glare-free illumination.

316L Stainless steel or aluminum construction with black, gray or cor-ten like finish standard.

IP66

## range

	StripLED	Optics	Remote Driver	Integral Driver
<b>Dirigo_FL1 Steel</b> 40 in / 14.4 W	3000K/4000K	General	24V	-
<b>Dirigo_FL2 Aluminum</b> 40 in / 14.4 W	3000K/4000K	General	24V	-



Click images to go to product pages



Dirigo\_FL1 Steel  
(40" Standalone)

Dirigo\_FL2 Aluminum  
(40" Standalone)

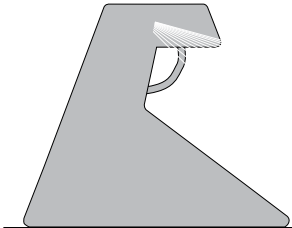
Dirigo\_M1 Steel  
(For continuous runs)

Dirigo\_M2 Aluminum  
(For continuous runs)

# Dirigo

## Grazing light

The internal Led source gradient was studied for the best lighting distribution, along the pathways.



## Range

Dirigo is available as single module or prepared for continuous line installation.

Single module (L. 39.4 inch)

Sealed and complete source profile, end caps.

Continuous LED installation modules

Continuous LED strips up to 14 feet. Feeds from either end allow for 28 feet of continuous strips. Minimal light interruption when joining multiple units greater than 28 feet. Mechanical connection between profiles. Remote Driver 24VDC.



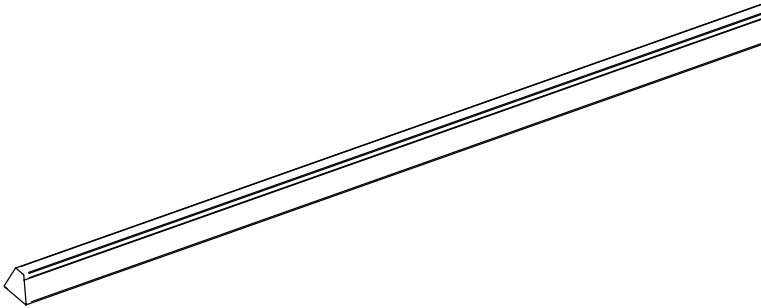
Complete element version

System

\*\*Dirigo Profiles are not field cuttable. For any cut lengths, please consult the factory.

## Robust design

The opposing level structure of Dirigo's single profile makes this appliance particularly sturdy and resistant. The absence of raw edges makes it ideal for public and private outdoor applications. Dirigo can be walked on and is extremely safe for users.







**inter•lux**  
[inter-lux.com/linealight](https://inter-lux.com/linealight)

**linea**  
**light**  
i-LÉD