

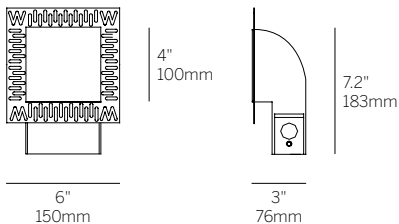
4" Square Ceiling / Floor Wash



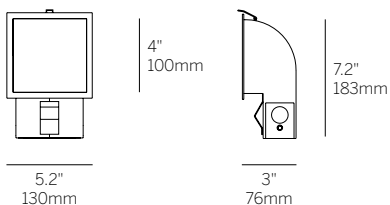
Recessed Plaster Trim



Recessed Bezel Trim



Recessed Plaster Trim (RPT)



Recessed Bezel Trim (RBT)

cut-out dimensions 4 5/8" x 4 5/8"

Ordering Information

WG-100SCFW					W	
Model	Fixation	Power ¹	CRI/CCT ²	Driver ³	Finish	Options
WG-100SCFW	RPT RBT	L M H	927 930 935 940	X S S010 SPH D010 PEQ0	W (std)	EM

Luminaire

- Bezel Trim or Plaster Trim 4" ceiling or floor washer for drywall.
- Installation from room side of the wall for remodel or new construction.
- 'Easy click' tool free installation of diecast aluminum lamp insert module.
- Heavy gauge steel trim housing.
- L70 (TM21 Projected 85C) 55,400 hours.
- ETL and ETL-C for dry and damp location.

Fixation

- RPT = Recessed plaster trim
- RBT = Recessed bezel trim

Power¹

- L = Low power, 8.1W @ 250mA
- M = Mid power, 11.5W @ 350mA
- H = High power, 16.8W @ 500mA

CRI/CCT (90+ CRI)²

- 927 = 2700K
- 930 = 3000K
- 935 = 3500K
- 940 = 4000K

Power Supply (remote only)³

- X = No driver
- S = Standard non-dim driver, 120-277V
- S010 = 0-10V >10% dimming, 120-277V
- SPH = Standard Phase Dimming, 120VAC (available in Low power only)
- D010 = EldoLED, 1%, 0-10V dimming, 120-277V
- PEQ0 = Lutron Hi-lume Premier 0.1% EcoSystem, 120-277V

Finish

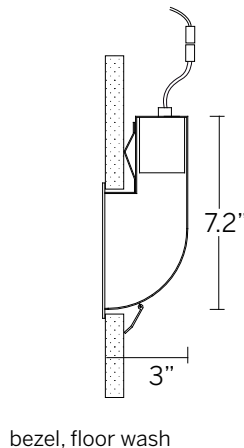
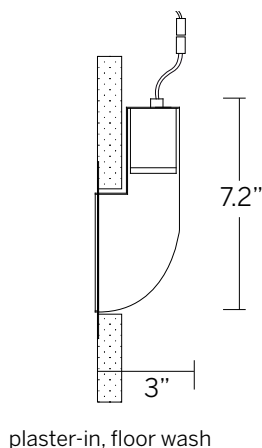
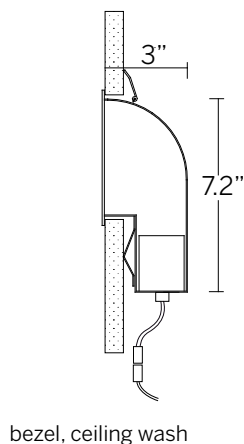
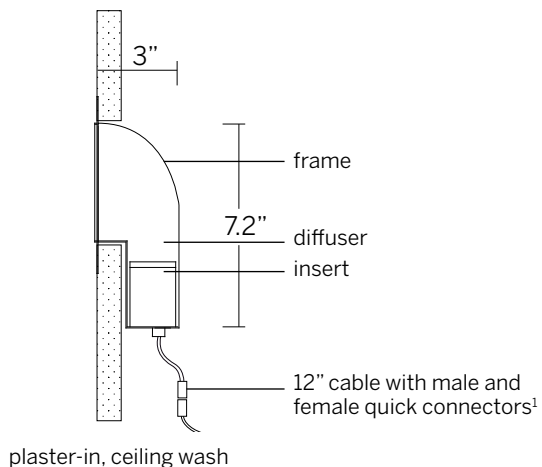
- W = White, 15% gloss, Tiger Drylac 49/11350

Options

- EM = Emergency (remote)

- 1 Wattage shown does not include power supplies/drivers. System wattage adds 10-20%, dependent upon driver selection.
- 2 See photometric data sheet for delivered lumens.
- 3 Refer to power supply page for details.

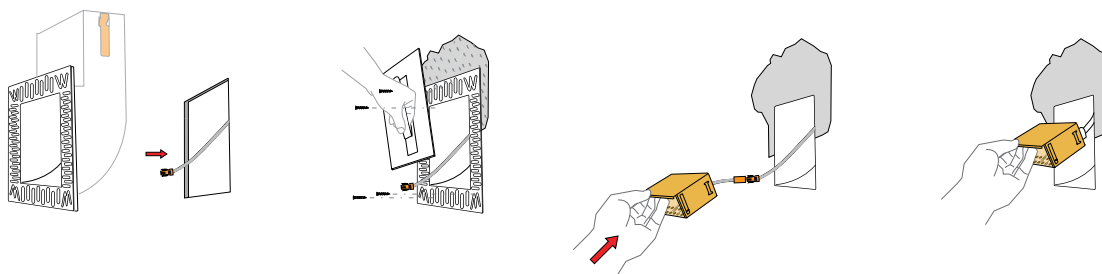
4" Square Ceiling / Floor Wash



cut-out dimensions 4 5/8" x 4 5/8"

¹Connectors included. Class II low voltage wire supplied by others. See power supply page for details.

Plaster-in instructions



Bezel instructions

