

4" Square Ceiling / Floor Wash

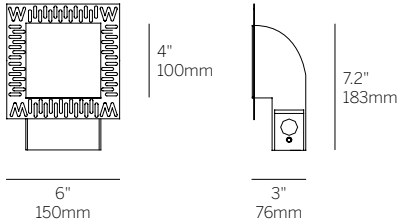
inter•lux



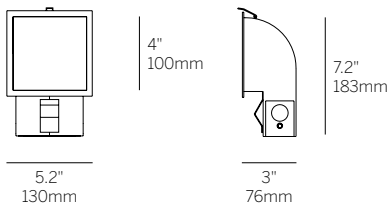
Recessed Plaster Trim



Recessed Bezel Trim



Recessed Plaster Trim (RPT)



Recessed Bezel Trim (RBT)

cut-out dimensions 4 5/8" x 4 5/8"

Ordering Information

WG-100SCFW					W	
Model	Fixation	Power ¹	CRI/CCT ²	Driver ³	Finish	Options
WG-100SCFW	RPT RBT	L M H	927 930 935 940	X S S010 SPH D010 PEQ0 DFPN	W (std)	EM

Luminaire

- Bezel Trim or Plaster Trim 4" ceiling or floor washer for drywall.
- Installation from room side of the wall for remodel or new construction.
- 'Easy click' tool free installation of diecast aluminum lamp insert module.
- Heavy gauge steel trim housing.
- L70 (TM21 Projected 85C) 55,500 hours.
- ETL and ETL-C for dry and damp location.

Fixation

- RPT = Recessed plaster trim
- RBT = Recessed bezel trim

Power¹

- L = Low power, 8.8W @ 250mA
- M = Mid power, 12.3W @ 350mA
- H = High power, 17.5W @ 500mA

CRI/CCT (90+ CRI)²

- 927 = 2700K
- 930 = 3000K
- 935 = 3500K
- 940 = 4000K

Power Supply (remote only)³

- X = No driver
- S = Standard non-dim driver, 120-277V
- S010 = 0-10V >10% dimming, 120-277V
- SPH = Standard Phase Dimming, 120VAC (available in Low power only)
- D010 = EldoLED, 1%, 0-10V dimming, 120-277V
- PEQ0 = Lutron Hi-lume Premier 0.1% EcoSystem, 120-277V
- DFPN = Lutron Forward Phase 1% 120VAC

Finish

- W = White, 15% gloss, Tiger Drylac 49/11350

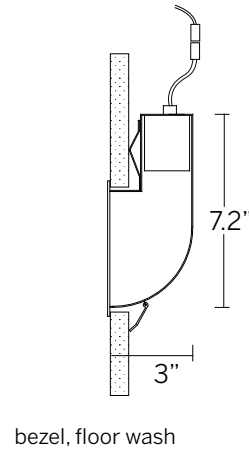
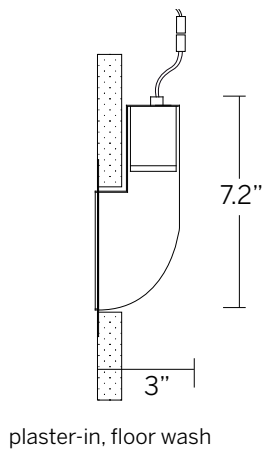
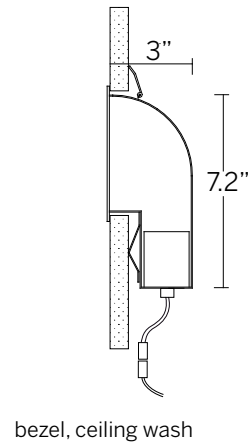
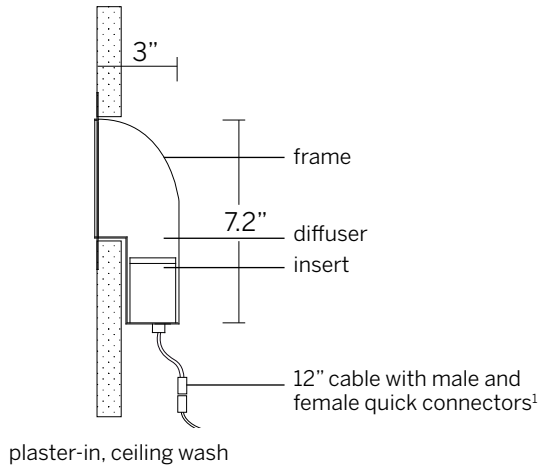
Options

- EM = Emergency (remote)

- 1 Wattage shown does not include power supplies/drivers.
- 2 See photometric data sheet for delivered lumens.
- 3 Refer to power supply page for details.

4" Square Ceiling / Floor Wash

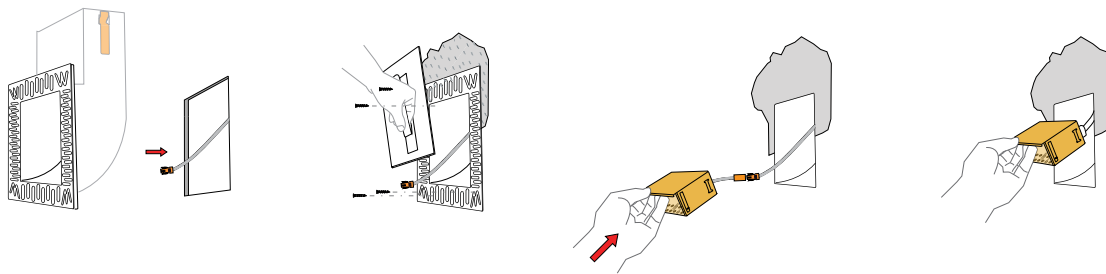
inter•lux



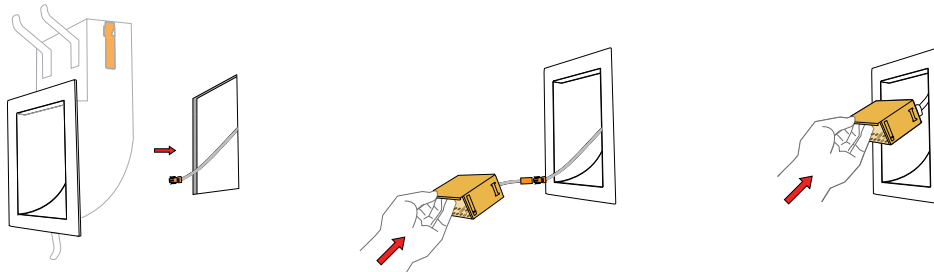
cut-out dimensions 4 5/8" x 4 5/8"

¹Connectors included. Class II low voltage wire supplied by others. See power supply page for details.

Plaster-in instructions



Bezel instructions



inter•lux

ILLUMINANCE - HIGH POWER 3500K WG-100SCFW-...H-935-...-W*		
Offset Distance [ft]	Illuminance [fc at max cd]	Beam Width [ft]
2	134	7.4
4	34	14.7
6	15	22.1
8	8	29.4
10	5	36.8
12	4	44.2
14	3	51.5
16	2	58.9
18	2	66.2
20	1	73.6

**UGR value noted is the maximum UGR (crosswise) with 935 LEDs at noted Power level.