



STOANE LIGHTING  
EXTERIOR

inter•lux

## BESPOKE DESIGN

## EXTERIOR

Stoane Lighting is a specialist manufacturer of architectural lighting equipment founded by Mike in 1995 producing lights in his garage..

We design, engineer and manufacture everything to order, by hand, at our factory in Edinburgh, Scotland.

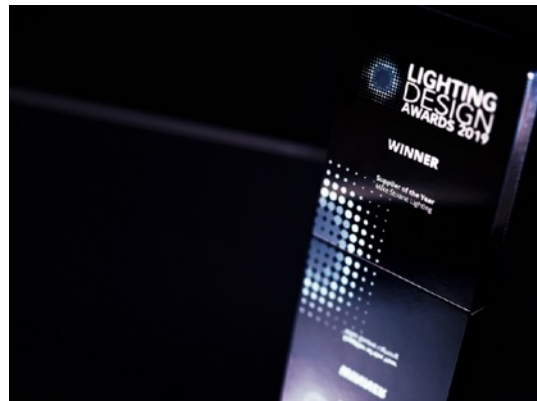
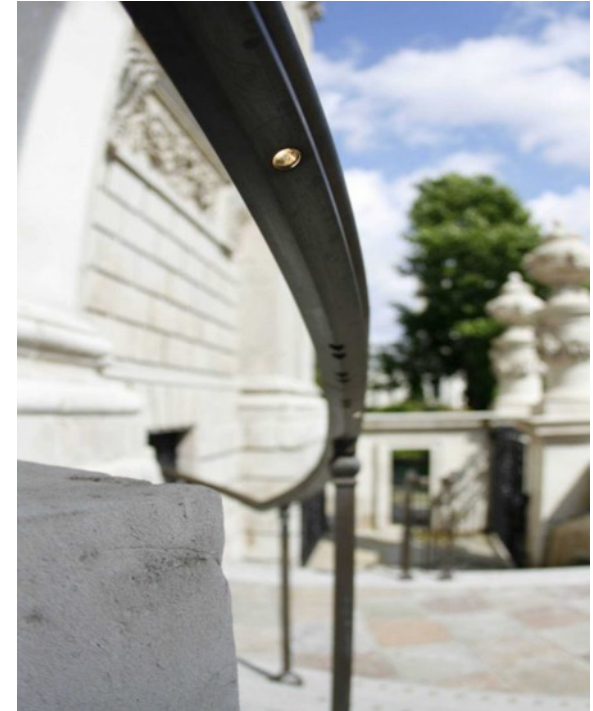
Having developed a comprehensive range of standard products for interior and exterior application, a large proportion of the lights we made are modified standards and specials that have never been made before, and are in response to a specific requirement.

Through manufacturing components ourselves to order and with local subcontractors, we can control the process and maximize our support for the local economy as well as reduce our carbon footprint and eliminate wasteful stock.

We are always learning something new and the knowledge we gain often influences our future direction









### Gasholder Triplets

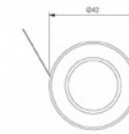
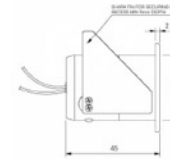
The Gasholder Triplets project has won a huge amount of architectural and lighting awards.

We supplied hundreds of handrail modules, spot lights on spikes for the gardens, bespoke glass lanterns for the lobbies and roof garden and individually pre-focused modules built into triangular ledge mounted enclosures to light all the columns of these restored Grade II listed cast-iron Gasholders.





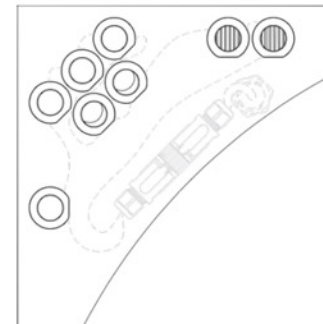
## Mole



IP66 rated miniature wall or floor recessed fitting. Suitable for use in areas subject to foot traffic only. Also suitable for recessing into ceiling canopies if specified with wings. Ø1.3" cutout required.

Our standard product was built into a bespoke enclosure that was designed and fabricated by Stoane Lighting. Each enclosure comprised of 8x Mole fittings with varying optics and level of diffusion to light the columns of the cast iron gas holder structure.

Enclosures were Magnetically mounted to the structure and tethered on via a safety wire. 4 enclosures attached around each column, over several tiers.





4

### Gasholder Triplets

A bespoke IP66 rated surface mountable decorative lantern. Utilizing a decorative fluted glass with a copper mesh inside the lantern, illuminated by a Xicato source.

Aluminum base and cap in aluminum with an Anolok Bronze finish.

Ø5" x 15.7" tall. Other diameters and lengths available.





### One Devonshire Square

#### Bespoke pendants

Bespoke feature pendants for an exterior courtyard. A central frosted acrylic tube with AR111 lamps and an outer decorative cage that was produced from steel with a rust finish applied.



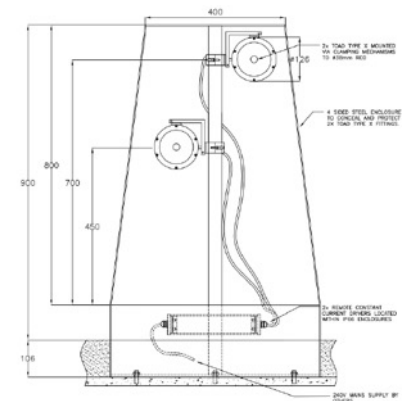


### The Scott Monument

#### Toad Type X in a bespoke enclosure

Our standard IP66 rated adjustable and lockable spot light for use with Xicato module and Ø4.3" accessories.

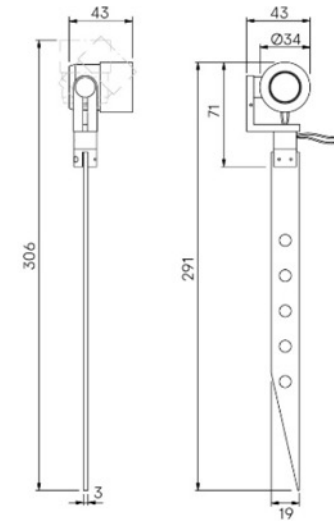
Built into bespoke enclosures mounted at the bottom of the monument.







**Bombay Sapphire Distillery,  
Laverstoke Mill**



### **Tadpole Spike**

Lockable mini LED spotlight on stainless steel spike.

Our miniature IP66 rated spike mounted Tadpole fittings were arrayed within the glasshouses of the distillery.

Tadpole is also available in a surface mount version or fixed wall mounted version.



### Queen Elizabeth Olympic Park

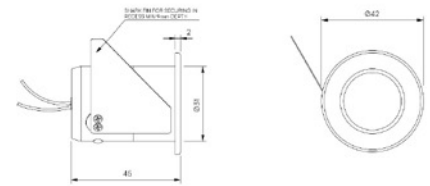
#### Olympic Park Catenary luminaire

A bespoke IP66 version of our standard G-CAT product shown below. The version for this project included a higher output, integrated gear and a domed diffuser. Also included a large radially laser cut metal shade to create a dappled lighting effect.





Rosslyn Chapel Visitors Centre



**Mole**

LED ground or wall recessed fitting. Optional installation sleeve for ground recessing

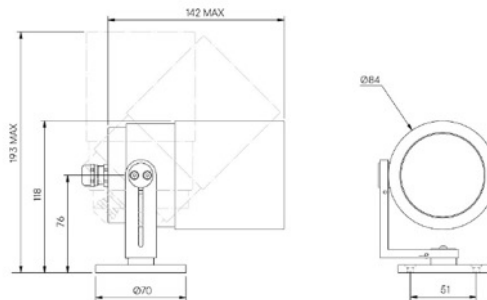


**Stratford Island**

## **Croc Type X**

IP66 rated adjustable and lockable spot light for use with Xicato module and Ø2.8" accessories.

8



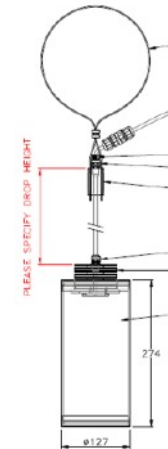




### Wood Green London

#### Bespoke IP66 Tree lantern

A series of bespoke lanterns available in three different sizes. Included Xicato module with a frosted diffuser on the top and bottom of each lantern. Outer casing was finished in a bronze powder coat and luminaires were attached to trees with adjustable rubber strapping. Used in various Public Realm areas throughout London.

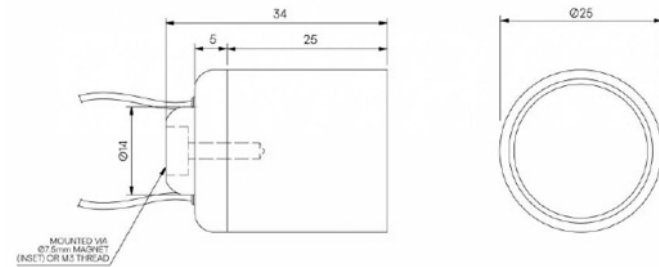




## St Paul's Cathedral Handrail

### Module Star

Versatile IP66 LED module. Fixed by either magnet or stud fixing.







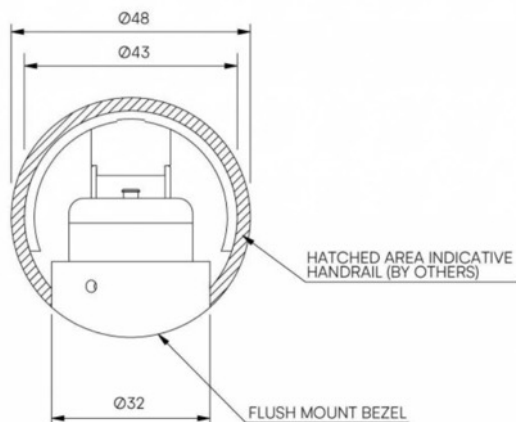
#### Indehandrail Module

IP66 rated flush mount LED module for use in Ø1.9" handrail systems.  
Ø1.3" cutout required.

Can be adapted for different diameter handrail systems.

Available with an anodized aluminum, stainless steel, brass or bronze bezel.

Available with frosted or clear glass lens with cropping shield.

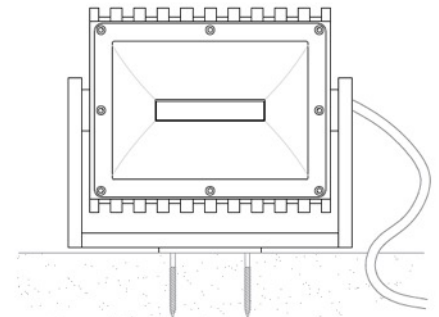
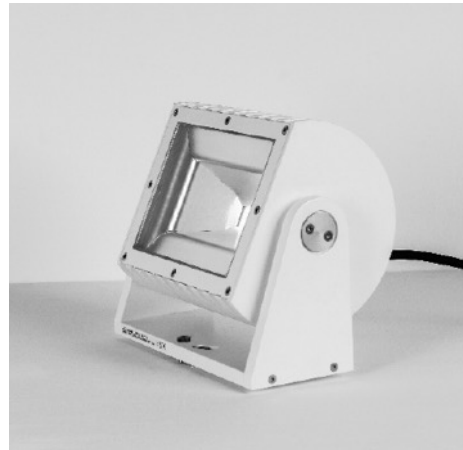




Château de Versailles

### Platypus

Large exterior IP66 surface mounted wash light with lockable tilt and pan for use with Xicato XLM LED Module (obsolete).

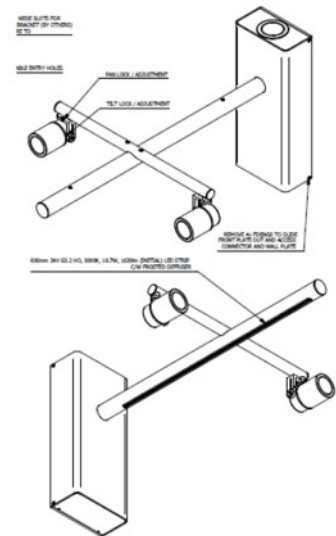




## Coal Drops Yard

Commissioned by Studio29 to replace the existing sign lighting at Coal Drop Yard.

Stoane Lighting produced ten different variants of signage lighting that included up and down linear solutions, an uplighting spot and some with adjustable spots. Each unit included integral DALI dimmable gear in an IP rated enclosure.







11

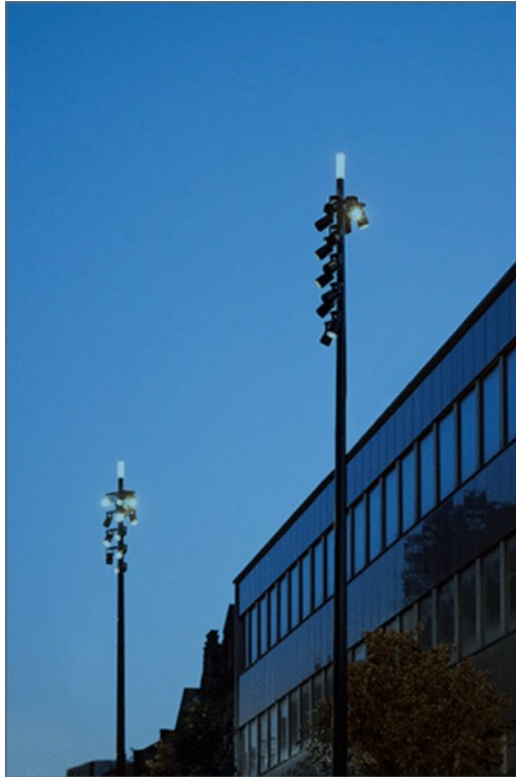
### Twin Sails Bridge Poole, Dorset

Bespoke IP66 rated CDMR111 adjustable spots designed and built for a marine environment.

Mounted in pairs on the underside of this bridge. They included an indexed spread lens and integral gear. A bespoke mounting detail was produced that allowed for fitting to be rotated for a lamp change from above and then set back to their precise position to avoid refocusing.



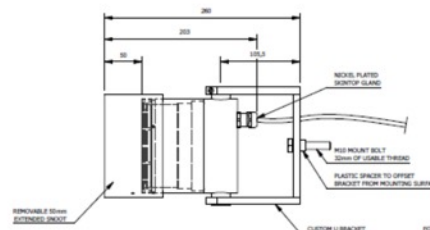
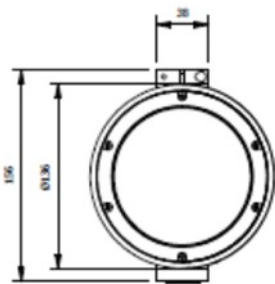
11



## Highbury Corner

### Toad Type X

Our standard IP66 rated adjustable and lockable spot light for use with Xicato module and Ø4.3" accessories. This version was modified to include a U Bracket with bespoke mount detail for integration into the lighting columns. The luminaire also include a snoot for additional glare protection.







12



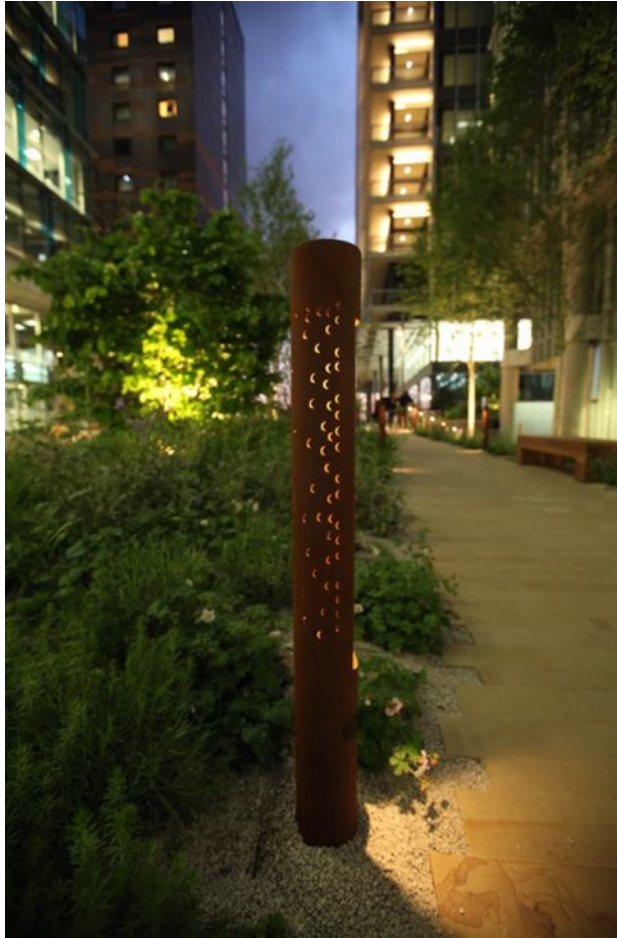
12

### Dover Yard

A bespoke version of our recessed in ground IP66 Badger fitting.

Including a square stainless steel bezel. Controlled via DMX and attached to a bespoke thermal camera the lighting reacted dynamically to the movement of those who walked through this passageway.





### Kingdom Street, Paddington

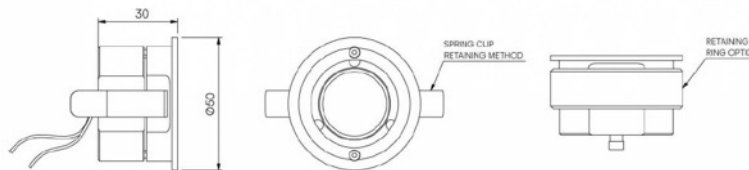
A series of bespoke bollards commissioned by ARUP Lighting.

We produced these columns in stainless steel with a bespoke laser cut pattern and cut out to allow for light distribution onto the pathway.

The product integrated our IP66 adjustable Iris fitting, this was modified to include a higher output LED chip.

The control gear was located integrally and some columns included microwave sensors to detect movement and allow for a dynamic lighting effect onto the pathway.

The Stainless Steel was sprayed in a Corten Replica finish.



## 1. Gasholder Triplets

Lighting Design: Speirs and Major  
Photography: Benz Roos

## 2. Gasholder Triplets

Lighting Design: Speirs and Major  
Photography: Benz Roos

## 3. Gasholder Triplets

Lighting Design: Speirs and Major  
Photography: Benz Roos

## 4. Gasholder Triplets

Lighting Design: Speirs and Major  
Photography: Benz Roos

## 5. 1 Devonshire Square

Lighting Design: Speirs and Major

## 6. Bombay Sapphire Distillery, Laverstoke Mill

Lighting Design: Light Medium  
Architect: Heatherwick  
Studio Photography: Iwan Baan

## 7. Rosslyn Chapel Visitors Centre

Lighting Design: Foto-Ma

## 8. Stratford Island

Lighting Design: LAPD  
Photography: Redshift Photography

## 9. St Paul's Cathedral Handrail

Lighting Design: Speirs and Major

## 10. Château de Versailles

Lighting Design: Les Éclairagistes  
Associés  
Photography: Joseph Frey

## 11. Twin Sails Bridge Poole, Dorset

Lighting Design: Speirs and Major

## 12. Dover Yard

Lighting Design: Jason Bruges  
Studio