



General: Orma is a compact and shallow family of round LED in-grades suitable to illuminate outdoor architectural elements such as facades, columns as well as landscape and pathway lighting.

The overall depth of roughly 3" including the housing makes it one of the most compact fixtures on the market. The new trimless version combines style and performance in a package that includes multiple beam spreads, color temperatures, the choice to use Constant Current or Constant Voltage and new housings for either concrete or tile applications. Orma' special optics like Blade (spreading light 180°).

Fixture Body: Die-Cast Aluminum 6060, anodized black (15 µm)

Trim: Trimless version has Extra-clear, Tempered glass with silk-screening on underside – Semi-flush version has clear glass rings and sandblasted rounds.

Mounting/Housing: Black, ABS housings available for both Concrete or Tile Flush installation.

Drive-over: 1.6"/2.2" up to 4,409 lbs.

Walk-over: 3.4"/5.0" walk-over.

Dimension/Weight: 1.65" (0.2 lbs) – 2.2" (0.44 lbs) – 3.43" (1.1 lbs) – 5.0" (1.98 lbs)

Driver: Remote, 120-277V Dimmable 0-10V or Non-Dim. Available in both Constant Current (CC) and Constant Voltage (CV) to leave flexibility of installation.

CC features: Less susceptible to voltage drop (exceeding 32' distance); Allows for dimming down to 0.1%; Fixtures need to be wired in series.

CV features: Possibility to use higher wattage drivers and feed multiple fixtures with less drivers; fixtures need to be wired in parallel.

Wattages (CC/CV): 1.5W (1.65", CV Only) – 1W/1.5W (2.2") – 2W/2.5W (3.4") – 4W/5W (5")

Cable: Fixture comes with 3.28' of power cable and built-in Aquastop® (anti-wicking) system

IP rating: IP68 for temporary submersion up to 15' depth for up to a maximum of 90 mins.

IK rating: IK 10

ETL Certification: ETL, wet location

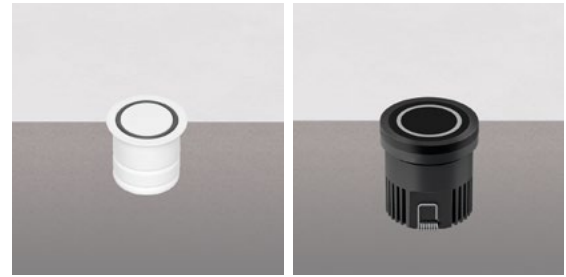
Optics: General Illumination / Concentric Rings of light.

Color temperatures: 2700K – 3000K – 4000K.

CRI: 80+

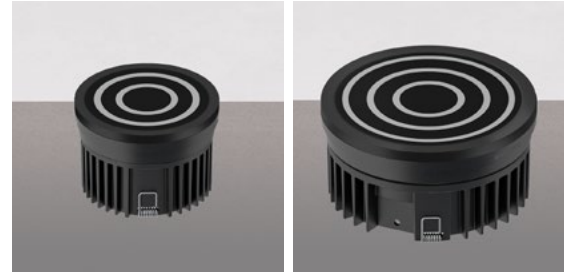
Lumen Maintenance: L70 projections tested at Tj 65° C and Ta 25°.

Warranty: 5-year Limited Warranty on fixtures. 1-year Limited Warranty on Remote Drivers.



1.6" 1.5W C.V.

2.2" 1W C.C / 1.5W C.V.



3.4" 2W C.C. / 2.5W C.V.

5.0" 4W C.C. / 5W C.V.



Delivered Lumens*	1.6"	2.2"	3.4"	5"
General Illumination	60	7	14	34

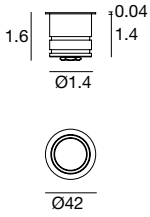
*Values shown for 3000K

Ordering Information							(Required)	
OR		CO				GE		
Product	Trim	Type	Diameter	Wattage/Operation	Color Temp	Optic	+	Housing ²
OR = ORMA	TL = Trimless Flush	CO = Concentric	16 ¹ = 1.65"	1.5 CV = 1.5W / Constant Voltage (24VDC)	27 = 2700K 30 = 3000K 40 = 4000K	GE = General illumination	+	E98291 (1.6")
	SFWT = Semi-Flush White Trim		22 = 2.2"	1 CC = 1W / Constant Current (350mA) 1.5 CV = 1.5W / Constant Voltage (24VDC)				E98292 (1.6")
	SFBLT = Semi-Flush Black Trim		34 = 3.4"	2 CC = 2W / Constant Current (630mA) 2.5 CV = 2.5W / Constant Voltage (24VDC)				E83038 (2.2")
	SFGT = Semi-Flush Gray Trim		50 = 5.0"	4 CC = 4W / Constant Current (350mA) 5 CV = 5W / Constant Voltage (24VDC)				E99922 (2.2")
								E83039 (3.4")
								E99923 (3.4")
								E83040 (5")
								E99924 (5")
								CC: ECO30W-XXX SOLO50W-XXX SOLO100W-XXX
								CV: OT96-D010 OT96-JBX

¹ Only available with 1.5W CV

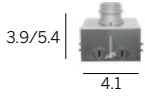
² See page 2

1.6" 1.5W C.V. DC - 24VDC



HOUSING OPTIONS (pick one)

E98291
Concrete Housing
PVC



E98292
Tile Housing
PVC



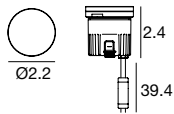
DRIVER OPTIONS (pick one)

C.V. Power supply options (remote only)

OT96-D010
Osram, 10% 0-10V dim, 96W, 24VDC, 120-277VAC, supplied in a Dry location enclosure

OT96-JBX
Osram, Non-dim 24VDC, 120-277VAC, Wet location

2.2" 1W C.C. DC - 350mA / 1.5W C.V. DC - 24VDC



HOUSING OPTIONS (pick one)

E83038
Concrete Housing
PVC



E99922
Tile Housing
PVC



DRIVER OPTIONS (pick one)

C.C. Power supply options (remote only)

ECO30W-350
0-10V EldoLED
ECODrive 30W
for 1-10 fixtures

SOLO50W-350
0-10V EldoLED
SOLOdrive 50W
for 1-20 fixtures

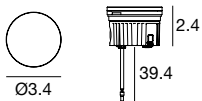
SOLO100W-350
0-10V EldoLED
SOLOdrive 100W
for 1-40 fixtures

C.V. Power supply options (remote only)

OT96-D010
Osram, 10% 0-10V dim, 96W, 24VDC, 120-277VAC, supplied in a Dry location enclosure

OT96-JBX
Osram, Non-dim 24VDC, 120-277VAC, Wet location

3.4" 2W C.C. DC - 630mA / 2.5W C.V. DC - 24 VDC



HOUSING OPTIONS (pick one)

E83039
Concrete Housing
PVC



E99923
Tile Housing
PVC



DRIVER OPTIONS (pick one)

C.C. Power supply options (remote only)

ECO30W-630
0-10V EldoLED
ECODrive 30W
for 1-10 fixture

SOLO50W-630
0-10V EldoLED
SOLOdrive 50W
for 1-16 fixtures

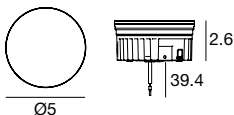
SOLO100W-630
0-10V EldoLED
SOLOdrive 100W
for 1-32 fixtures

C.V. Power supply options (remote only)

OT96-D010
Osram, 10% 0-10V dim, 96W, 24VDC, 120-277VAC, supplied in a Dry location enclosure

OT96-JBX
Osram, Non-dim 24VDC, 120-277VAC, Wet location

5.0" 12W C.C. - 350mA



HOUSING OPTIONS (pick one)

E83040
Concrete Housing
PVC



E99924
Tile Housing
PVC



DRIVER OPTIONS (pick one)

C.C. Power supply options (remote only)

ECO30W-350
0-10V EldoLED
ECODrive 30W
for 1-3 fixture

SOLO50W-350
0-10V EldoLED
SOLOdrive 50W
for 1-6 fixtures

SOLO100W-220
0-10V EldoLED
SOLOdrive 100W
for 1-12 fixtures

C.V. Power supply options (remote only)

OT96-D010
Osram, 10% 0-10V dim, 96W, 24VDC, 120-277VAC, supplied in a Dry location enclosure

OT96-JBX
Osram, Non-dim 24VDC, 120-277VAC, Wet location