



**General:** Orma is a compact and shallow family of round LED in-grades suitable to illuminate outdoor architectural elements such as facades, columns as well as landscape and pathway lighting.

The overall depth of roughly 3" including the housing makes it one of the most compact fixtures on the market. The new trimless version combines style and performance in a package that includes multiple beam spreads, color temperatures, the choice to use Constant Current or Constant Voltage and new housings for either concrete or tile applications. Orma' special optics like Blade (spreading light 180°).

**Fixture Body:** Die-Cast Aluminum 6060, anodized black (15 µm)

**Trim:** Flush (Stainless Steel) or Semi-Flush (Stainless Steel or Brass) Trim. Brass is untreated and will patina naturally. Extra-clear, Tempered glass.

**Mounting/Housing:** Black, ABS housings available for both Concrete or Tile Flush installation.

**Drive-over:** Up to 4,409 lbs.

**Dimensions (Flush – Semi-Flush)/Weight:** 3.3"/3.8" (1.1 lbs).

**Driver:** Remote, 120-277V Dimmable 0-10V or Non-Dim. Available in both Constant Current (CC) and Constant Voltage (CV) to leave flexibility of installation.

**CC features:** Less susceptible to voltage drop (exceeding 32' distance); Allows for dimming down to 0.1%; Fixtures need to be wired in series.

**CV features:** Possibility to use higher wattage drivers and feed multiple fixtures with less drivers; fixtures need to be wired in parallel.

**Wattages (CC/CV):** 8W/9W (3.3" & 3.8").

**Cable:** Fixture comes with 3.28' of power cable and built-in Aquastop® (anti-wicking) system

**IP rating:** IP68 for temporary submersion up to 15' depth for up to a maximum of 90 mins.

**IK rating:** IK 10

**ETL Certification:** ETL, wet location

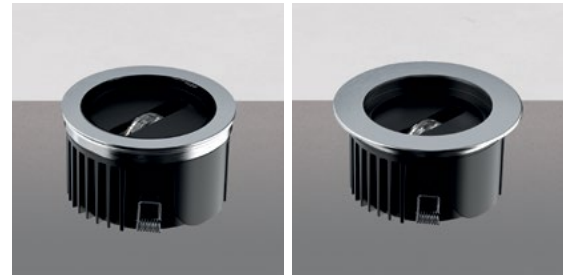
**Optics:** Fixed, Radial.

**Color temperatures:** 2700K – 3000K – 4000K.

**CRI:** 80+

**Lumen Maintenance:** L70 projections tested at Tj 65° C and Ta 25°.

**Warranty:** 5-year Limited Warranty on fixtures. 1-year Limited Warranty on Remote Drivers.



3.3" 8W C.C. / 9W C.V.

3.8" 8W C.C. / 9W C.V.



Delivered Lumens*	3.3"/3.8"
Blade/Radial	218

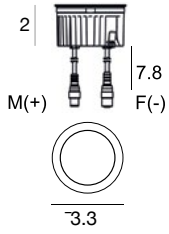
\*Values shown for 3000K

Ordering Information							(Required)	
Product	Trim	Type	Diameter	Wattage/Operation	Color Temp	Optic	Housing <sup>1</sup>	Driver <sup>1</sup>
OR = ORMA	FT = Flush Trim St. Steel	BL = Blade	33 = 3.3"	8 CC = 8W / Constant Current (350mA) 9 CV = 9W / Constant Voltage (24VDC)	27 = 2700K 30 = 3000K 40 = 4000K	RA = Radial	E99651 E99563 <sup>2</sup> E99856 <sup>2</sup> E83252	<b>CC:</b> ECO30W-350 SOLO50W-350 SOLO100W-350  <b>CV:</b> OT96-D010 OT96-JBX
	SFST = Semi-Flush St. Steel Trim SFBT = Semi-Flush Brass Trim	BL = Blade	38 = 3.8"	8 CC = 8W / Constant Current (350mA) 9 CV = 9W / Constant Voltage (24VDC)				

<sup>1</sup> See page 2

<sup>2</sup> 3.3" (FT) ONLY

## 3.3" Blade - 8W DC - 630mA / 9W C.V. DC 24VDC



### Housing OPTIONS (pick one)

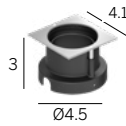
**E99651**  
Concrete Housing  
PVC



**E99563<sup>1</sup>**  
Round Vandal  
Resistant Housing  
PVC



**E99856<sup>1</sup>**  
Square Vandal  
Resistant Housing  
PVC



**E83252**  
Tile Housing  
PVC



### C.C. Power supply options (remote only)

**ECO30W-350**  
0-10V EldoLED  
ECOdrive 30W  
for 1-3 fixtures

**SOLO50W-350**  
0-10V EldoLED  
SOLOdrive 50W  
for 1-4 fixtures

**SOLO100W-350**  
0-10V EldoLED  
SOLOdrive 100W  
for 1-8 fixtures

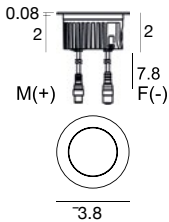
### C.V. Power supply options (remote only)

**OT96-D010**  
Osram, 10% 0-10V dim, 96W,  
24VDC, 120-277VAC, supplied  
in a Dry location enclosure

**OT96-JBX**  
Osram, Non-dim 24VDC,  
120-277VAC, Wet location

<sup>1</sup> Note: Vandal resistant housings make the Flush Trim fixtures become Semi-flush Trim.

## 3.8" Blade - 8W DC - 630mA / 9W C.V. DC 24VDC



### Housing OPTIONS (pick one)

**E99651**  
Concrete Housing  
PVC



**E83252**  
Tile Housing  
PVC



### C.C. Power supply options (remote only)

**ECO30W-350**  
0-10V EldoLED  
ECOdrive 30W  
for 1-3 fixtures

**SOLO50W-350**  
0-10V EldoLED  
SOLOdrive 50W  
for 1-4 fixtures

**SOLO100W-350**  
0-10V EldoLED  
SOLOdrive 100W  
for 1-8 fixtures

### C.V. Power supply options (remote only)

**OT96-D010**  
Osram, 10% 0-10V dim, 96W,  
24VDC, 120-277VAC, supplied  
in a Dry location enclosure

**OT96-JBX**  
Osram, Non-dim 24VDC,  
120-277VAC, Wet location