

# archiline



Archiline is a linear outdoor light offering a high level of luminosity and flexibility. This extremely wide and competitive range is the result of many years' research. Each item is precision engineered using top-quality materials, and each Archiline family offers a range of outputs, with dedicated narrow, wide, elliptical and asymmetric wallwasher beams and optical compartments designed to ensure a uniquely pure beam, easy to plug connectors for simpler installation, various dimming protocols, a choice of monochrome warm and natural white or RGBW, with the colors being mixed in the optic.

#### **Recessed model materials**

Anodized 6060 aluminum alloy or AISI 316L stainless steel flange  
Extra-clear tempered glass or white ceramic varnished tempered glass diffuser

#### **Wall/ceiling model materials**

Anodized 6060 aluminum alloy or AISI 316L stainless steel body  
Extra-clear tempered glass diffuser



# archiline\_W range

Archiline\_W



Archiline\_W Pro



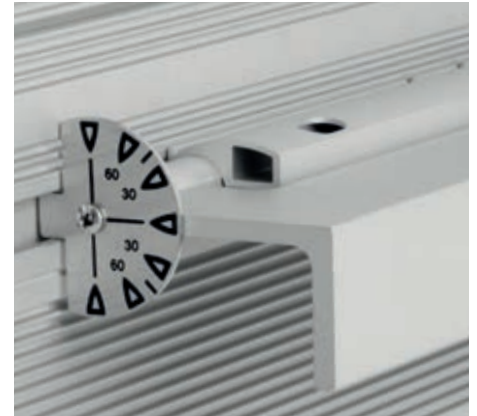
	_W	_W Anti-glaring	_W RGBW
12.6 in	13W	12W	13W
14 in	-	-	-
20.3 in	-	-	-
24.4 in	24W	24W	26W
36.2 in	37.5W	36W	40W
39.4 in	-	-	-
48 in	48.5W	48.5W	53W
Finish	■	■	■
powerLED	3000K 3500K 4000K	3000K 3500K 4000K	RGBW+W RGBW+N
Optics	Narrow Spot Spot Medium Flood Flood Elliptical Asymmetric	Spot Medium Flood Flood Elliptical	Spot Medium Flood Flood Elliptical Asymmetric
Driver	120/277VAC On/Off, 0-10V	120/277VAC On/Off, 0-10V	120/277VAC DMX

## A wide range of applications

Archiline\_W is a linear element for installation on the wall itself. It combines the functions of a spot with the shape and size of an outdoor bar.

The body is made from 10-micron- Anodized 6060 extruded aluminum alloy.

Archiline\_W has an adjustable graduated stainless steel bracket that fixes to a wall or ceiling, and the distance from the wall is also adjustable.



DMX  
512

DALI



IK10

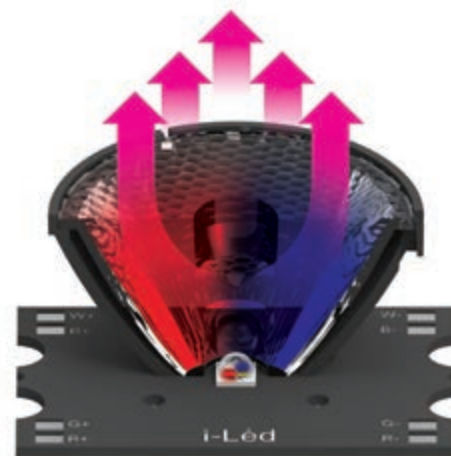
IP67



## The perfect mix

Combined-optic RGBW technology makes color mixing better and more uniform. This takes place within the optics, using treated lenses optimized for maximum efficiency and high-performance RGBW LEDs. One diode combines pure warm or natural white and red, green and blue, mixing the colors better than traditional systems and creating an infinite variety of shades, as well as obtaining pure white without the influence of the RGB. The optical compartment is screenprinted in black, with dark-light screening giving perfect control over glare, sectioning the beam to eliminate the direct outward component and lighting only the wall.

Perfect mixing

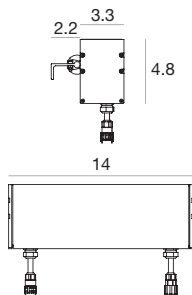


## State-of-the-art engineering: Archiline\_W PRO

The PRO version is the star of the Archiline range, made entirely from dedicated components, including the powerLED diode sources and extremely high-performance integrated drivers. Archiline\_W PRO has an efficiency of 100 lm/W, developing a luminous flux of over 3400 lumens per foot! It is therefore strongly recommended for very high walls, thanks partly to its optics covered with 0.2-inch extra-clear glass, black screenprinted edges and high-efficiency elliptical, narrow or flood beam. The 6-degree-optic version will project a beam to a height of 164 feet! Available in an ON/OFF or RGBW version with DMX dimmer protocol. In this model, the power tension and DMX signal both pass through the connector.



**Archiline PRO\_W | Linear profiles | 120-277V | powerLED | Wet location IP67 | Integral Driver | 27.5W/ft**



**32W**

Anod. AL.	<b>On/Off E90458</b>	2700K	3629 lm	<b>M</b>	Spot	<b>15</b>
Anod. AL.	<b>0-10V E83703</b>	3000K	3629 lm	<b>W</b>	Flood	<b>30</b>
		3500K	3629 lm	<b>T</b>	Elliptical	<b>25</b>
		4000K	3917 lm	<b>N</b>		
Anod. AL.	<b>On/Off E81447</b>	2700K	3629 lm	<b>M</b>	Narrow Spot	<b>06</b>
Anod. AL.	<b>0-10V E83704</b>	3000K	3629 lm	<b>W</b>		
		3500K	3629 lm	<b>T</b>		
		4000K	3917 lm	<b>N</b>		

**Cables On/Off**

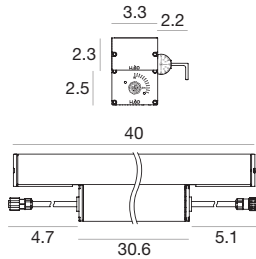
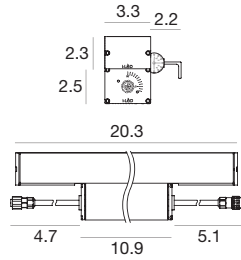
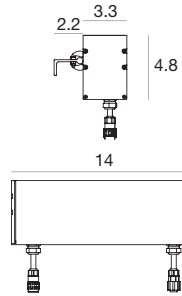
<b>E99057</b>	<b>E98147</b>	<b>E98146</b>
78.7 in power supply cable F 3 pin	196.9 in extension M+F 3 pin	393.7 in extension M+F 3 pin

**Cables 0-10V**

<b>E99826</b>	<b>E99822</b>	<b>E99823</b>	<b>E99824</b>	<b>E99825</b>
39.4 in power supply cable + 0-10V dimming F 5 pin	196.9 in power supply cable + 0-10V dimming F 5 pin	39.4 in extension cable for power + 0-10V dimming M+F 5 pin	196.9 in extension cable for power + 0-10V dimming M+F 5 pin	393.7 in extension cable for power + 0-10V dimming M+F 5 pin

technical information

Archiline PRO\_W RGBW DMX | Linear profiles | 120-277V | powerLED | Wet location IP67 | Integral Driver | 22W/ft



32W

Steel	<b>E90459</b>	RGBW natural white	<b>Q</b>	Spot	<b>15</b>
		RGBW warm white	<b>V</b>	Medium Flood	<b>30</b>
				Medium Flood	<b>45</b>
				Elliptical	<b>25</b>
Steel	<b>E81450</b>	RGBW natural white	<b>Q</b>	Narrow Spot	<b>06</b>
		RGBW warm white	<b>V</b>		

38W

Steel	<b>E90462</b>	RGBW natural white	<b>Q</b>	Spot	<b>15</b>
		RGBW warm white	<b>V</b>	Medium Flood	<b>30</b>
				Medium Flood	<b>45</b>
				Elliptical	<b>25</b>
Steel	<b>E81451</b>	RGBW natural white	<b>Q</b>	Narrow Spot	<b>06</b>
		RGBW warm white	<b>V</b>		

76W

Steel	<b>E90463</b>	RGBW natural white	<b>Q</b>	Spot	<b>15</b>
		RGBW warm white	<b>V</b>	Medium Flood	<b>30</b>
				Medium Flood	<b>45</b>
				Elliptical	<b>25</b>
Steel	<b>E81452</b>	RGBW natural white	<b>Q</b>	Narrow Spot	<b>06</b>
		RGBW warm white	<b>V</b>		

Cables power+DMX

<b>E98662</b>	<b>E98663</b>	<b>E98662</b>	<b>E98663</b>	<b>E98986</b>
39.4 in feed cable all in one power + DMX M+F 6 pin shield	196.9 in feed cable all in one power + DMX M+F 6 pin shield	39.4 in extension all in one power + DMX M+F 6 pin shield	196.9 in extension all in one power + DMX M+F 6 pin shield	DMX 120Ω terminator

technical information