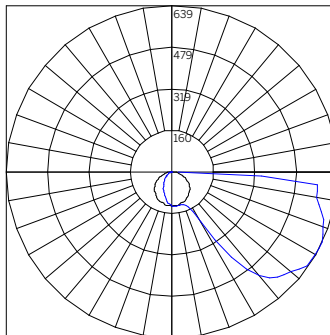
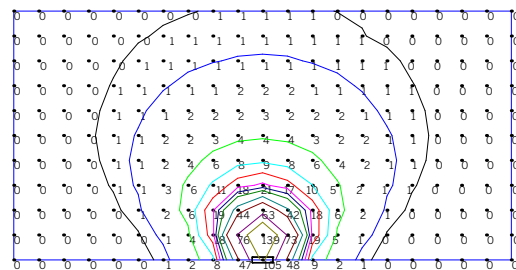


<b>EN66-RRWH-ME-...-AS...</b>			
Delivered Lumens - Asymmetric			
<b>Diameter [Wattage]</b>			
		106 [11 CV]	
		106 [17 CV]	
<b>CCT</b>	30-	714	1087
	40-	743	1131
<b>Polar Plot / Cone Of Light Multiplier</b>			
		106 [11 CV]	106 [17 CV]
		0.66	1.00



Beam Angle (0-180) = Asymmetric  
Beam Angle (90-270) = Asymmetric

**ISOILLUMINANCE DIAGRAM - 1W 3000K Asymmetric<sup>1</sup>**  
**EN66-SRWH-ME-47-1-CV-40-AS<sup>2</sup>**



Value [Fc]	Color	Value [Fc]	Color	Value [Fc]	Color
0.5	Black	15	Red	40	Teal
1	Blue	20	Magenta	50	Brown
5	Green	25	Dark Blue	75	Purple
10	Cyan	30	Dark Green	100	Olive

- 1 Illuminance values in foot-candles for the fixture part number noted. Illuminance points spaced 1'-0" on center.
- 2 Fixture is mounted 1'-0" above the illuminated surface.