

dirigo



The Dirigo series is a new lighting concept for outdoor spaces. Available as single elements or modules to create continuous lines, it is a ground profile designed to illuminate walkways and other foot traffic areas, and be placed along paths and walls to mark out routes. It can be safely walked on, and its distinctive and award-winning design features a hidden light source that creates controlled, ground-hugging and glare-free illumination.

Materials

Aluminum or AISI 316L stainless steel body



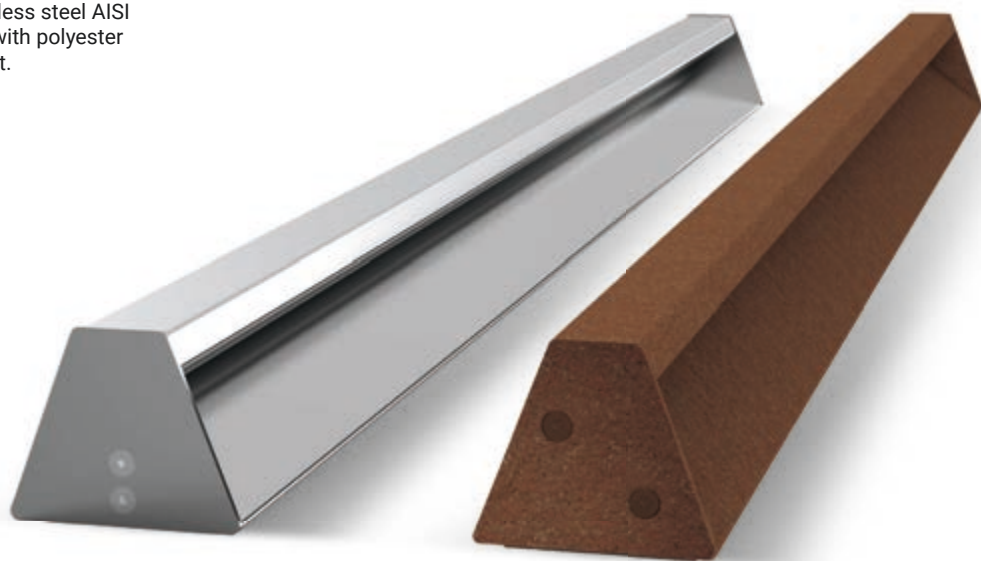
dirigo lighting concept

Concept

Invisible during the day. Main actor during the night. Dirigo creates lighting paths through an elegant opposite plans game, hiding the source. Its peculiar profile's section makes the fixture compact and solid, perfectly integrated in all outdoor contexts.

Technology and materials

Dirigo series available in brushed stainless steel AISI 316L or anodized extruded aluminum with polyester powder pre-coating antioxiide treatment.

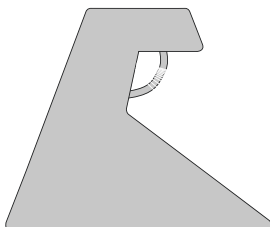


Dirigo FL (Full Light): Single standalone module (39.4 inch)



Grazing light

The internal Led source gradient was studied for the best lighting distribution, along the pathways.



Range

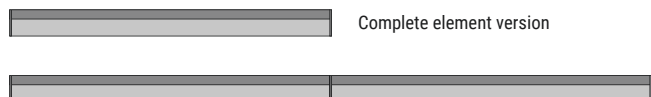
Dirigo is available as single module or prepared for continuous line installation.

Dirigo FL (Full Light): Single standalone module (39.4 inch)

Sealed profile with light unit and end caps. Requires remote 24VDC driver (s) ordered separately.

Dirigo M (Modular): For continuous installations

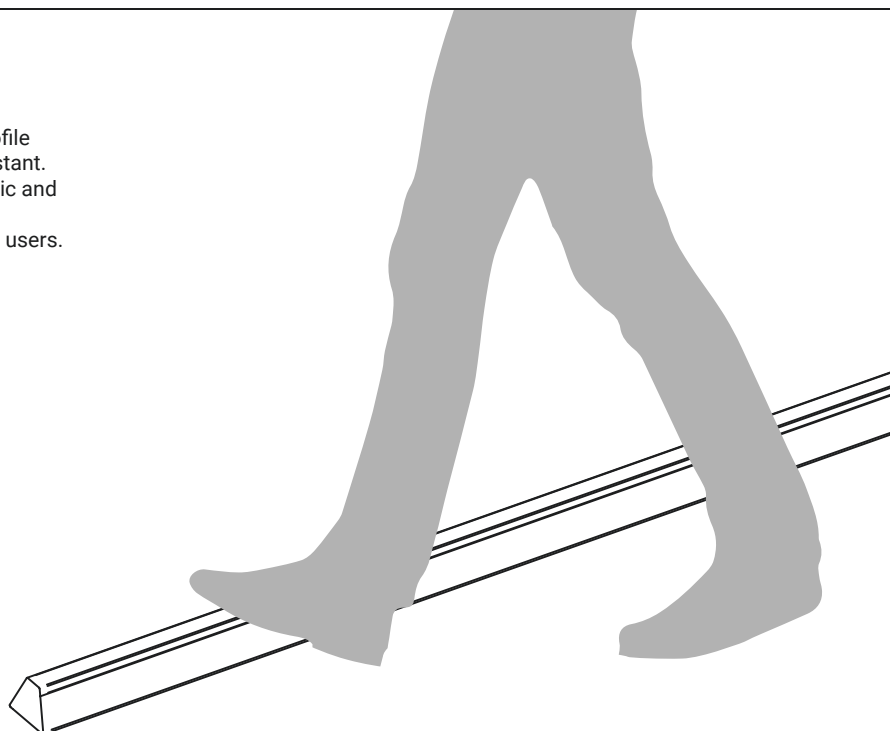
Continuous LED strips up to 16.4 feet. Feeds from either end. Minimal light interruption when joining multiple modules beyond 16.4'. Mechanical connection between profiles. Requires remote 24VDC driver (s) ordered separately.



**Dirigo Profiles are not field cuttable. Please consult factory for custom Dirigo M2 (Aluminum) lengths. Dirigo M1 (Stainless Steel) is not customizable.

Robust design

The opposing level structure of Dirigo's single profile makes this appliance particularly sturdy and resistant. The absence of raw edges makes it ideal for public and private outdoor applications. Dirigo can be walked on and is extremely safe for users.



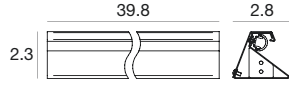
* Only available in straight runs

Dirigo_M1 Stainless Steel MASTER | Linear profiles



Grey **E64591**

39.8 in



Master

To be completed with dedicated installation accessories, lighting unit and remote driver

Dirigo_M1 Stainless Steel SECONDARY | Linear profiles



Grey **E64648**

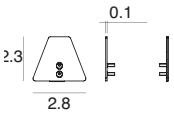
39.4 in



Secondary

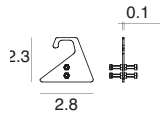
To be completed with dedicated installation accessories, lighting unit and remote driver

ACCESSORIES AND CONFIGURATION



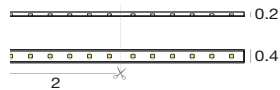
E64592 End caps set

Stainless steel
2 pcs



E64593 Junction set

Stainless steel
1 pc



E62403 Lighting unit

LED strip 4.4W/ft, 3000K, 196.9", with 12" Female connector



E89629 Connection cable

Feed cable 39.4", with Male connector

E62403N Lighting unit

LED strip 4.4W/ft, 4000K, 196.9", with 12" Female connector

Power supply options (remote only)

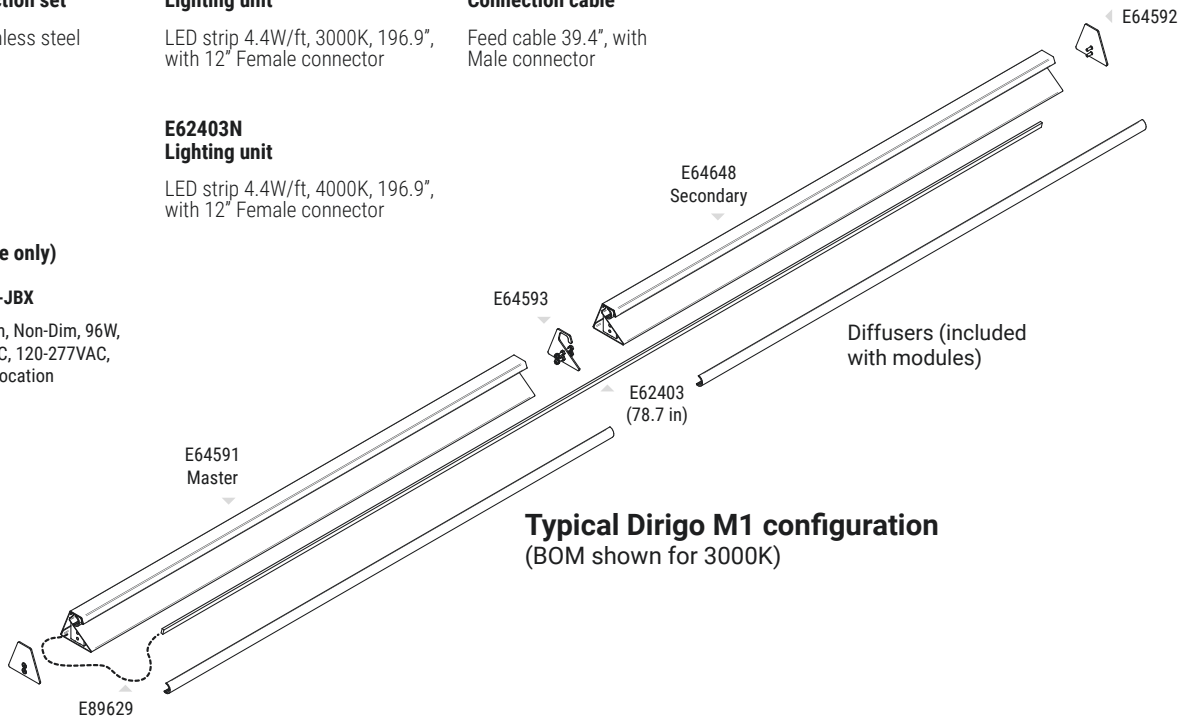
OT96-D010

Osram, 10% 0-10V dim, 96W, 24VDC, 120-277VAC, supplied in a Dry location enclosure

OT96-JBX

Osram, Non-Dim, 96W, 24VDC, 120-277VAC, Wet Location

technical information



Typical Dirigo M1 configuration
(BOM shown for 3000K)