

# 4" ProTools Downlight (Shallow)

## Round Recessed

inter•lux



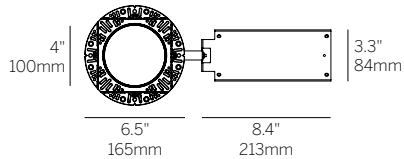
RPT / RFD / SOD



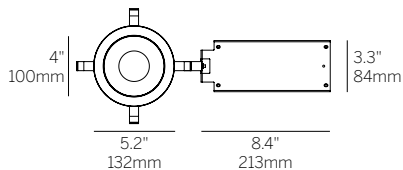
RBT / RRC / RSC



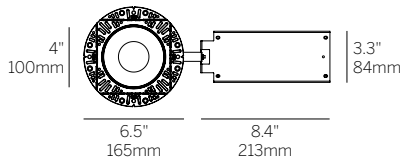
RPT / RRP / RSC



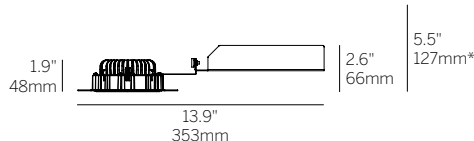
RPT / RFD



RBT / RRC



RPT / RRP



### Ordering Information

WG-100RPTD			92									
Model	Fixation	Power <sup>1</sup>	CRI	CCT <sup>2</sup>	Driver <sup>3</sup>	Cover	Lens	Beam	Trim Finish	Cover Finish	Housing	Options
WG-100RPTD	RPT RBT	L M H	92	27 30 35 40	S010 D010 SPH PEQ0 D2S	RFD RRC RRP	SOD RSC	LAM 110	W B S F	W B S F	LP NC IC CP X	WL TC MLC EM

### Luminaire

- Part of a complete family of 4" aperture matching downlights.
- 4" (100mm) round aperture downlight for wide distribution general illumination. Available with round recessed cone or regressed pinhole with 0.5" regressed 2" round light aperture or high transmission, evenly illuminated flush full aperture diffuser.
- Efficacy up to 77 lumens per watt (delivered).
- CREE 3-step McAdam LEDs.
- CRI >92+ standard.
- L70 (TM21 Projected 85° C) Static White = 102,000 hours.
- ETL and ETL-C for dry and damp location standard, Wet location optional.
- Luminaire and driver installed and maintained from below the ceiling. Maximum ceiling thickness 1".
- Housings available (see housings page).
- Multiple luminaire configurations for plaster trim (see detail page).
- 5-year warranty.

### Fixation

- RPT = Recessed Plaster Trim
- RBT = Recessed Bezel Trim

### Power<sup>1</sup>

- L = Low Power, 11W @ 350mA
- M = Mid Power, 15W @ 500mA
- H = High Power, 22.5W @ 700mA

### CRI

- 92 = 92+ CRI

### CCT<sup>2</sup>

- 27 = 2700K
- 30 = 3000K
- 35 = 3500K
- 40 = 4000K

### Driver<sup>3</sup>

- S010 = eldoLED 0-10V 1% dimming, 120-277V (30W)
- D010 = eldoLED 0-10V 0.1% dimming, 120-277V (30W)
- SPH = Phase (2-wire) 3% dimming, 120V only (20W) [N/A for H power]
- PEQ0 = Lutron Hi-Lume Premier 0.1% EcoSystem dimming, 120-277V (20W) [n/a for High Power]
- D2S = DALI-2 for Static White 0.1% dimming, 120-277V (30W)

### Cover

- RFD = Round Flush Diffuser
- RRC = Round Recessed Cone
- RRP = Round Regressed Pinhole

### Lens

- SOD = Satin Opal Diffuser
- RSC = Recessed Satin Clear Lens

### Beam

- LAM = Lambertian
- 110 = 110° Beam Angle

### Trim / Cover Finish (Cover N/A for RFD)

- W = White, 15% gloss, RAL 9003 (standard)
- B = Black, 15% gloss, RAL 9005
- S = Silver, 15% gloss, RAL 9006
- F = Custom finish, specify RAL code

### Housing (optional)<sup>4</sup>

- LP = Landing Pan
- NC = New Construction Housing
- IC = Insulated Ceiling Housing
- CP = Chicago Plenum Housing
- X = No Housing

### Options

- WL = Wet Location (RRC only)
- TC = Thick Ceiling Clip (see detail page)
- MLC = Multiple luminaire configurations (see detail page)
- EM = Emergency (remote only)

<sup>1</sup> Wattage shown does not include power supplies/drivers.

<sup>2</sup> See photometric data sheet for delivered lumens.

<sup>3</sup> See driver information for details.

<sup>4</sup> See housings pages for details.

\* Minimum of 5.5" (127mm) ceiling void is required to install the integral driver from below the ceiling.

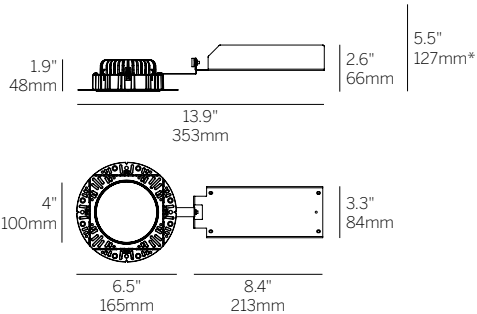
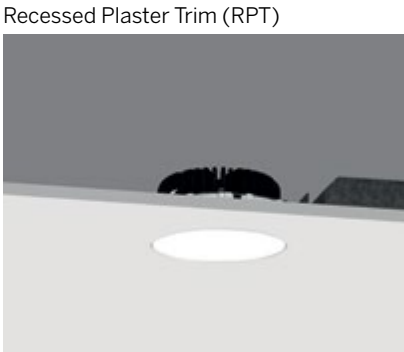
Cut Out: Ø 4.75" / 121mm

# 4" ProTools Downlight (Shallow)

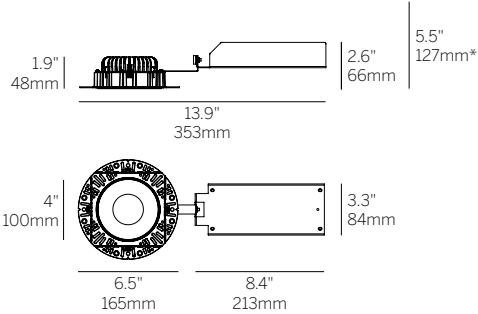
## Round Recessed



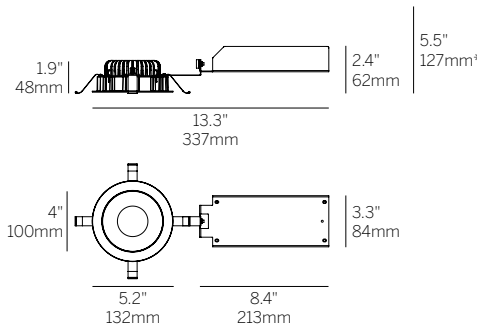
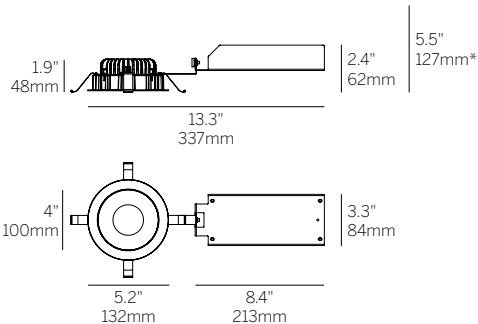
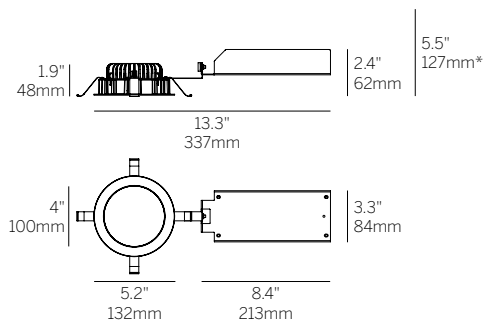
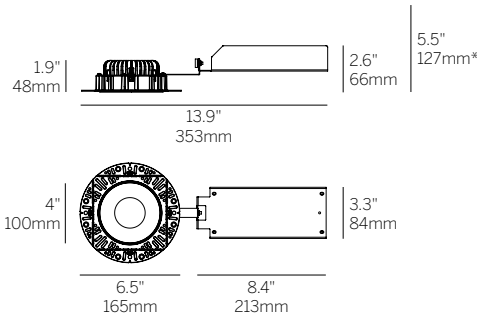
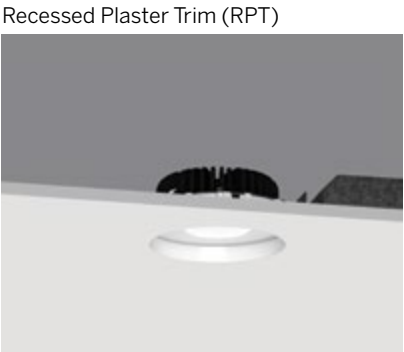
### Round Flush Diffuser (RFD)



### Round Recessed Cone (RRC)



### Round Regressed Pinhole (RRP)



\*Minimum of 5.5" (127mm) ceiling void is required to install the integral driver from below the ceiling.

Cut Out: Ø 4.75" / 121mm