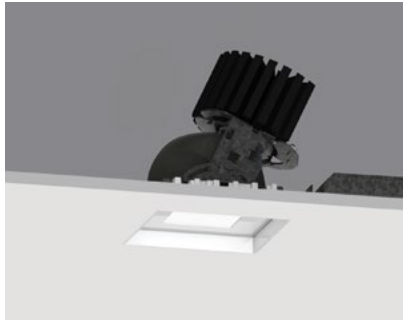
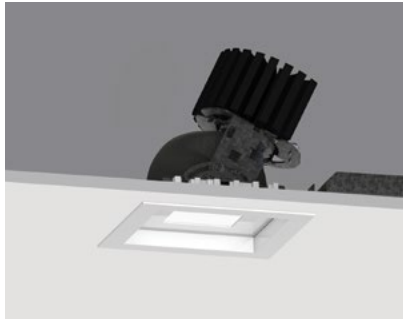


# 4" ProTools DLX Adjustable Square Regressed Pinhole



Recessed Plaster Trim



Recessed Bezel Trim

## Ordering Information

| Model        | Fixation   | Power <sup>1,2</sup>                       | CRI/<br>CCT <sup>4</sup>                          | Driver <sup>5</sup>            | Cover | Lens             | Beam           | Finish <sup>6</sup> | Options        |
|--------------|------------|--|---|--------------------------------|-------|------------------|----------------|---------------------|----------------|
| WG-100SPTDLX |            |  |   |                                | SRP   |                  |                |                     |                |
| WG-100SPTDLX | RPT<br>RBT | L<br>M<br>H<br>XH<br>TW<br>WD <sup>3</sup> | 927<br>930<br>935<br>940<br>TW<br>WD <sup>3</sup> | X<br>S<br>D010<br>PEQ0<br>DALI | SRP   | OA<br>MPL<br>RSC | 16<br>32<br>41 | W<br>S <sup>7</sup> | LP<br>CP<br>IC |

### Luminaire

- 4" square adjustable downlight with 2" light aperture.
- Regressed aperture / lens position.
- 35 degree cut-off.
- No light leak or view into ceiling void from below due to a unique light leak hood.
- Luminaire and driver installed and maintained from below the ceiling.
- Tilt 45°, rotation 365°, 144 step.
- Multiple luminaire configurations for plaster trim. See Multiple Luminaire specsheet for details.

### Fixation

- RPT = Recessed Plaster Trim
- RBT = Recessed Bezel Trim

### Power<sup>1,2</sup>

- L = Low Power, 5.7W @ 350mA
- M = Mid Power, 8.4W @ 500mA
- H = High Power, 12W @ 700mA
- XH = Extra High Power, 17.8W @ 1050mA
- TW = 9W @ 500mA
- WD = 0.4 - 11.8W @ 350mA<sup>3</sup>

### CRI/CCT<sup>4</sup>

- 90+ CRI (Low/Mid/High/Extra High)
- 927 = 2700K, (494/686/923/1293 lm)
  - 930 = 3000K, (532/738/993/1391 lm)
  - 935 = 3500K, (532/738/993/1391 lm)
  - 940 = 4000K, (569/790/1063/1489 lm)
  - TW = Tunable White 1800 - 4000K, (610 - 1060 lm)
  - WD = Warm Dimming 1800 - 3000K, (31 - 1150 lm)<sup>3</sup>

### Driver<sup>5</sup>

- X = Remote driver, ordered separately
- S = Standard non-dim driver, 120-277V
- D010 = EldoLED, 1%, 0-10V Driver, 120-277V
- PEQ0 = Lutron Hi-lume Premier 0.1% EcoSystem, SoftOn/FadeToBlack, 120-277V
- DALI = EldoLED, 0.1%, DALI dimming (TW), 120-277V

### Cover

- SRP = Square Regressed Pinhole

### Lens

- OA = Open Aperture
- MPL = Micro-prismatic Lens
- RSC = Satin Clear

### Beam

- 16 = 16° Beam Angle
- 32 = 32° Beam Angle
- 41 = 41° Beam Angle

### Finish<sup>6</sup>

- W = White, 15% gloss, Tiger Drylac 49/11350 (standard)
- S = Silver, 15% gloss, Tiger Drylac 49/90500<sup>7</sup>

### Options

ProTools downlights require no additional options kits for remodel & new construction

- LP = Landing Pan
- CP = Chicago Plenum Housing
- IC = IC/NC Housing

### Optical Accessory Holder (Check up to 3 lenses and/or accessories below)

- HX = Hex Louver
- FG = Frosted Glass
- LS = Linear Spread Lens
- SOL = Solite Lens

<sup>1</sup> Other lumen packages available, consult factory.

<sup>2</sup> Wattage shown does not include power supplies/drivers. System wattage adds 10-20%.

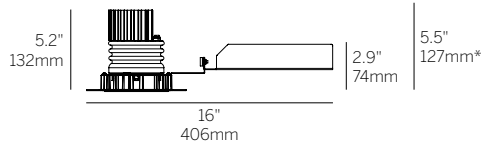
<sup>3</sup> Available with PEQ0 driver only.

<sup>4</sup> Delivered lumen data shown for WG-100SPTDLX... - SRP-OA-16-W. Refer to page 2 for delivered lumen data for other product configurations. Source lumen data is shown for TW and WD options.

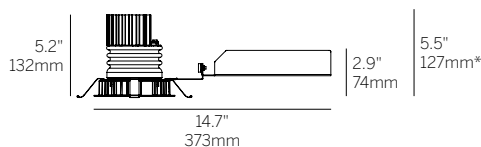
<sup>5</sup> See power supply page for details.

<sup>6</sup> See Tiger Drylac color chart: [inter-lux.com/tiger](http://inter-lux.com/tiger)

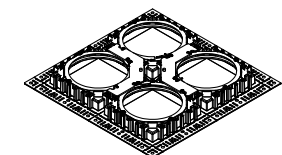
<sup>7</sup> Plaster trim version includes white frame and silver cover.



Recessed Plaster Trim (RPT)



Recessed Bezel Trim (RBT)



Multiple luminaire configurations for plaster trim. See Multiple Luminaire specsheet for details.

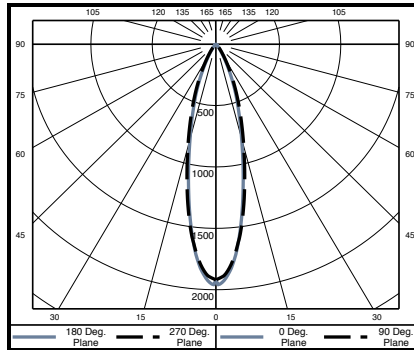
\*Minimum of 5.5" (127mm) ceiling void is required to install the integral driver from below the ceiling.

Cut Out:  $\square$ 4.75" / 121mm

# 4" ProTools DLX Adjustable Square Regressed Pinhole

## WG-100SPTDLX-...-SRP-OA-16-W

|       |      | Delivered Lumens |       |       |       |
|-------|------|------------------|-------|-------|-------|
| Power | W    | 2700K            | 3000K | 3500K | 4000K |
| L     | 5.7  | 494              | 532   | 532   | 569   |
| M     | 8.4  | 686              | 738   | 738   | 790   |
| H     | 12   | 923              | 993   | 993   | 1063  |
| XH    | 17.8 | 1293             | 1391  | 1391  | 1489  |



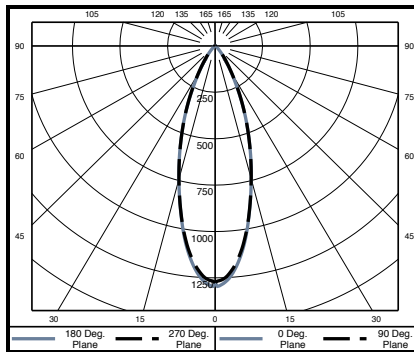
Polar Plot

| Cone of Light Tabulation* |                      |               |
|---------------------------|----------------------|---------------|
| Mounting Height (Ft)      | Footcandles at Nadir | Diameter (Ft) |
| 4                         | 120                  | 1.8           |
| 6                         | 53.3                 | 2.8           |
| 8                         | 30                   | 3.7           |
| 10                        | 19.2                 | 4.6           |
| 12                        | 13.3                 | 5.5           |
| 14                        | 9.8                  | 6.4           |
| 16                        | 7.5                  | 7.4           |

\*Tabulation uses Mid Power / 935 LED

## WG-100SPTDLX-...-SRP-OA-32-W

|       |      | Delivered Lumens |       |       |       |
|-------|------|------------------|-------|-------|-------|
| Power | W    | 2700K            | 3000K | 3500K | 4000K |
| L     | 5.7  | 456              | 490   | 490   | 525   |
| M     | 8.4  | 632              | 680   | 680   | 728   |
| H     | 12   | 851              | 915   | 915   | 980   |
| XH    | 17.8 | 1192             | 1282  | 1282  | 1373  |



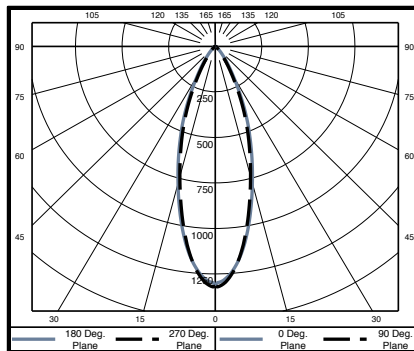
Polar Plot

| Cone of Light Tabulation* |                      |               |
|---------------------------|----------------------|---------------|
| Mounting Height (Ft)      | Footcandles at Nadir | Diameter (Ft) |
| 4                         | 79.7                 | 2.3           |
| 6                         | 35.4                 | 3.4           |
| 8                         | 19.9                 | 4.5           |
| 10                        | 12.8                 | 5.7           |
| 12                        | 8.9                  | 6.8           |
| 14                        | 6.5                  | 7.9           |
| 16                        | 5                    | 9.1           |

\*Tabulation uses Mid Power / 935 LED

## WG-100SPTDLX-...-SRP-OA-41-W

|       |      | Delivered Lumens |       |       |       |
|-------|------|------------------|-------|-------|-------|
| Power | W    | 2700K            | 3000K | 3500K | 4000K |
| L     | 5.7  | 466              | 501   | 501   | 537   |
| M     | 8.4  | 646              | 696   | 696   | 745   |
| H     | 12   | 870              | 936   | 936   | 1002  |
| XH    | 17.8 | 1219             | 1312  | 1312  | 1404  |



Polar Plot

| Cone of Light Tabulation* |                      |               |
|---------------------------|----------------------|---------------|
| Mounting Height (Ft)      | Footcandles at Nadir | Diameter (Ft) |
| 4                         | 82.3                 | 2.2           |
| 6                         | 36.6                 | 3.4           |
| 8                         | 20.6                 | 4.5           |
| 10                        | 13.2                 | 5.6           |
| 12                        | 9.1                  | 6.7           |
| 14                        | 6.7                  | 7.9           |
| 16                        | 5.1                  | 9             |

\*Tabulation uses Mid Power / 935 LED

### Delivered Lumen Lens Multipliers

|                            |      |
|----------------------------|------|
| Open Aperture (OA)         | 1.00 |
| Micro-prismatic Lens (MPL) | 0.90 |
| Satin Clear (RSC)          | 0.88 |