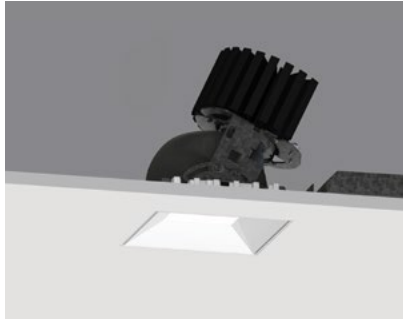


4" ProTools DLX Adjustable Square Recessed Cone



Recessed Plaster Trim



Recessed Bezel Trim

Ordering Information

Model	Fixation	Power ^{1,2}	CRI/CCT ⁴	Driver ⁵	Cover	Lens	Beam	Finish ⁶	Options ⁸
WG-100SPTDLX					SRC				
WG-100SPTDLX	RPT RBT	L M H XH TW WD ³	927 930 935 940 TW WD ³	X S D010 PEQ0 DALI	SRC	OA MPL RSC	16 32 41	W S ⁷	LP CP IC WL

Luminaire

- 4" square downlight with 2" light aperture.
- Regressed aperture / lens position.
- 35 degree cut-off.
- No light leak or view into ceiling void from below due to a unique light leak hood.
- Luminaire and driver installed and maintained from below the ceiling.
- Tilt 45°, rotation 365°, 144 step.
- Multiple luminaire configurations for plaster trim. See Multiple Luminaire specsheet for details.

Fixation

- RPT = Recessed Plaster Trim
- RBT = Recessed Bezel Trim

Power^{1,2}

- L = Low Power, 5.7W @ 350mA
- M = Mid Power, 8.4W @ 500mA
- H = High Power, 12W @ 700mA
- XH = Extra High Power, 17.8W @ 1050mA
- TW = 9W @ 500mA
- WD = 0.4 - 11.8W @ 350mA³

CRI/CCT⁴

- 90+ CRI (Low/Mid/High/Extra High)
- 927 = 2700K, (552/766/1031/1445 lm)
- 930 = 3000K, (594/824/1110/1555 lm)
- 935 = 3500K, (594/824/1110/1555 lm)
- 940 = 4000K, (636/883/1188/1664 lm)
- TW = Tunable White 1800 - 4000K, (610-1060 lm)
- WD = Warm Dimming 1800 - 3000K, (31 - 1150 lm)³

Driver⁵

- X = Remote driver, ordered separately
- S = Standard non-dim driver, 120-277V
- D010 = EldoLED, 1%, 0-10V Driver, 120-277V
- PEQ0 = Lutron Hi-lume Premier 0.1% EcoSystem, SoftOn/FadeToBlack, 120-277V
- DALI = EldoLED, 0.1%, DALI dimming (TW), 120-277V

Cover

- SRC = Square Recessed Cone

Lens

- OA = Open Aperture
- MPL = Micro-prismatic Lens
- RSC = Satin Clear

Beam

- 16 = 16° Beam Angle
- 32 = 32° Beam Angle
- 41 = 41° Beam Angle

Finish⁶

- W = White, 15% gloss, Tiger Drylac 49/11350 (standard)
- S = Silver, 15% gloss, Tiger Drylac 49/90500⁷

Options⁸

ProTools downlights require no additional options kits for remodel & new construction

- LP = Landing Pan
- CP = Chicago Plenum Housing
- IC = IC/NC Housing
- WL = Wet Location (not available with open aperture)

Optical Accessory Holder (Check up to 3 lenses and/or accessories below)

- HX = Hex Louver
- FG = Frosted Glass
- LS = Linear Spread Lens
- SOL = Solite Lens

¹ Other lumen packages available, consult factory.

² Wattage shown does not include power supplies/drivers. System wattage adds 10-20%.

³ Available with PEQ0 driver only.

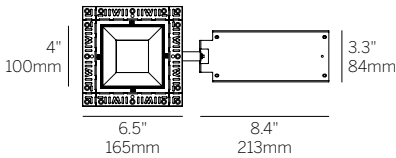
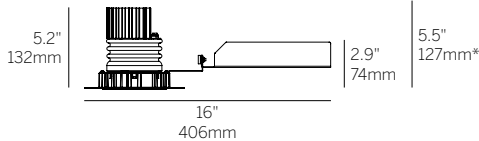
⁴ Delivered lumen data shown for WG-100SPTDLX...-SRC-OA-16-W. Refer to page 2 for delivered lumen data for other product configurations. Source lumen data is shown for TW and WD options.

⁵ See power supply page for details.

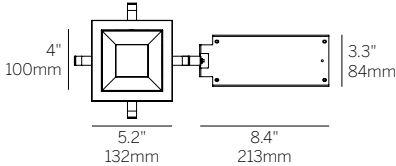
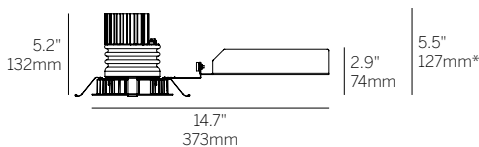
⁶ See Tiger Drylac color chart: inter-lux.com/tiger

⁷ Plaster trim version includes white frame and silver cover.

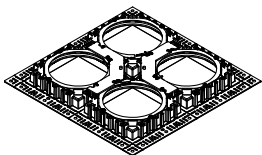
⁸ To specify multiple options, select the appropriate grouped codes from the dropdown e.g. LP-WL.



Recessed Plaster Trim (RPT)



Recessed Bezel Trim (RBT)



Multiple luminaire configurations for plaster trim. See Multiple Luminaire specsheet for details.

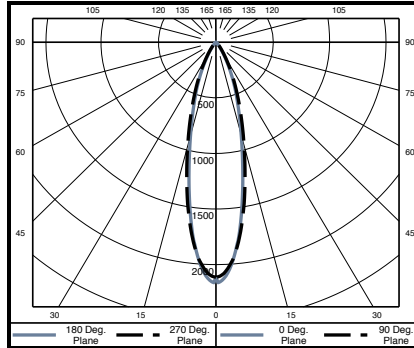
*Minimum of 5.5" (127mm) ceiling void is required to install the integral driver from below the ceiling.

Cut Out: \varnothing 4.75" / 121mm

4" ProTools DLX Adjustable Square Recessed Cone

WG-100SPTDLX-...-SRC-OA-16-W

		Delivered Lumens			
Power	W	2700K	3000K	3500K	4000K
L	5.7	552	594	594	636
M	8.4	766	824	824	883
H	12	1031	1110	1110	1188
XH	17.8	1445	1555	1555	1664



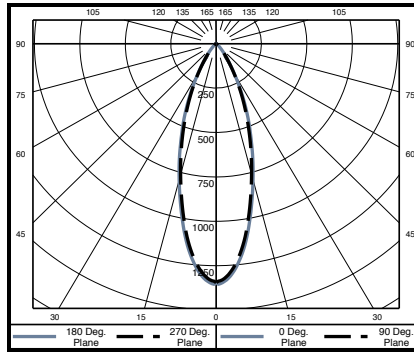
Polar Plot

Cone of Light Tabulation*		
Mounting Height (Ft)	Footcandles at Nadir	Diameter (Ft)
4	132	1.8
6	58.7	2.8
8	33	3.7
10	21.1	4.6
12	14.7	5.5
14	10.8	6.4
16	8.3	7.4

*Tabulation uses Mid Power / 935 LED

WG-100SPTDLX-...-SRC-OA-32-W

		Delivered Lumens			
Power	W	2700K	3000K	3500K	4000K
L	5.7	485	521	521	558
M	8.4	672	723	723	774
H	12	905	974	974	1042
XH	17.8	1267	1364	1364	1460



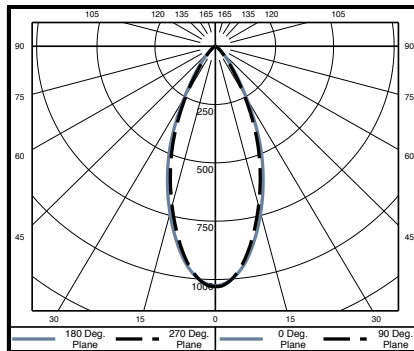
Polar Plot

Cone of Light Tabulation*		
Mounting Height (Ft)	Footcandles at Nadir	Diameter (Ft)
4	84.1	2.2
6	37.4	3.4
8	21	4.5
10	13.5	5.6
12	9.3	6.7
14	6.9	7.8
16	5.3	9

*Tabulation uses Mid Power / 935 LED

WG-100SPTDLX-...-SRC-OA-41-W

		Delivered Lumens			
Power	W	2700K	3000K	3500K	4000K
L	5.7	494	531	531	569
M	8.4	685	737	737	789
H	12	921	992	992	1062
XH	17.8	1291	1389	1389	1487



Polar Plot

Cone of Light Tabulation*		
Mounting Height (Ft)	Footcandles at Nadir	Diameter (Ft)
4	64.2	2.7
6	28.5	4.1
8	16.1	5.5
10	10.3	6.9
12	7.1	8.3
14	5.2	9.6
16	4	11

*Tabulation uses Mid Power / 935 LED

Delivered Lumen Lens Multipliers

Open Aperture (OA)	1.00
Micro-prismatic Lens (MPL)	0.90
Satin Clear (RSC)	0.88