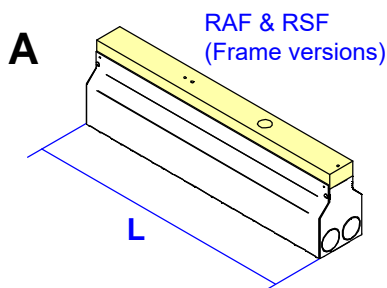
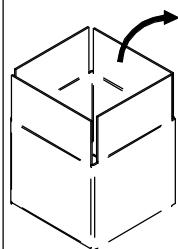
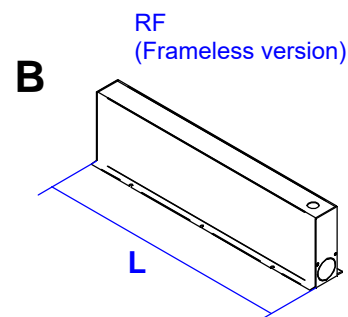


ARCHILINE OUTERCASINGS

A	Code	E98671	E98672	E98673	E99760
	L=Length (in)	14.01	21.5	40.78	60.08
B	Code	E99771	E99772		
	L=Length (in)	22.16	48.34		



	Code	E98724	E98725	E98726
	L=Length (in)	12.67	20.2	39.49

**WARNING:**

INSTALL PRODUCT IN ACCORDANCE WITH LOCAL AND NATIONAL ELECTRICAL CODES BY A QUALIFIED ELECTRICIAN

**WARNING:**

FAILURE TO COMPLY WITH THE INSTALLATION INSTRUCTIONS MAY RESULT IN DEATH OR SEVERE INJURY.

**WARNING:**

READ ALL SAFETY INSTRUCTIONS INCLUDED WITH LUMINAIRE BEFORE INSTALLING LUMINAIRE. SAVE INSTRUCTIONS FOR FUTURE USE.

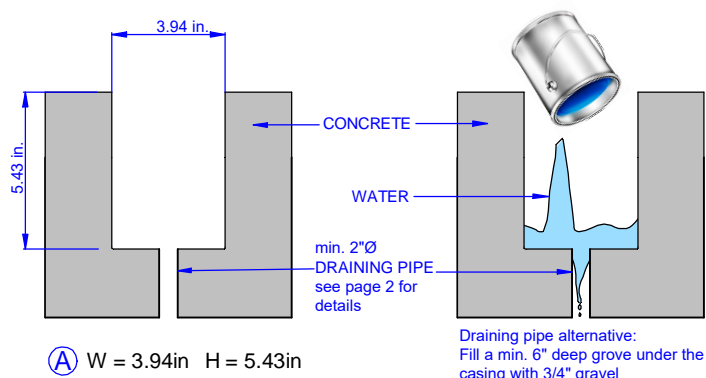
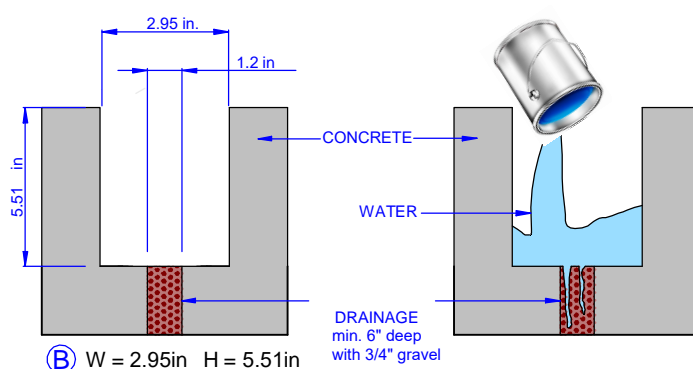
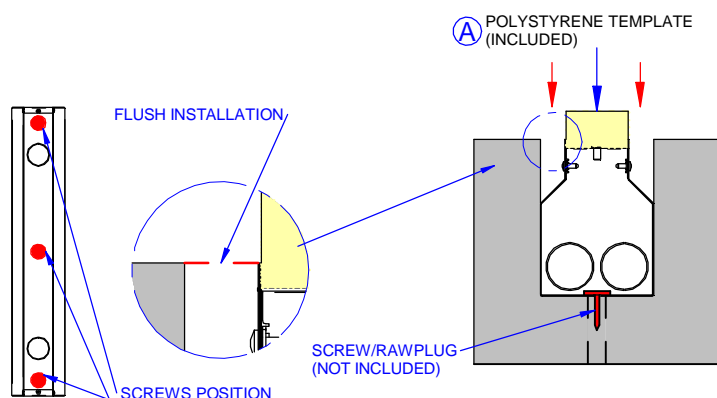
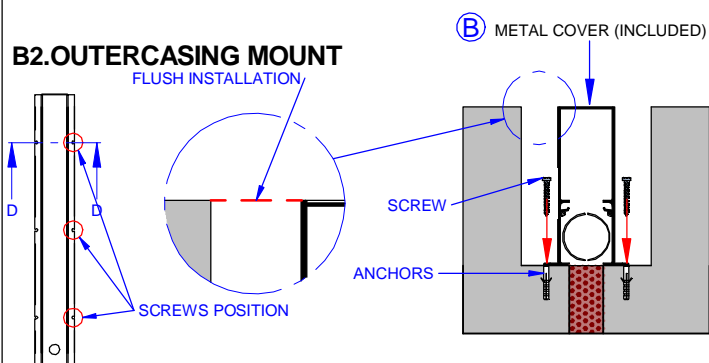
CAUTION:

THIS IS AN ELECTRONIC DEVICE. CARE MUST BE TAKEN DURING STORAGE AND HANDLING. STORE IN A CLEAN, COOL AND DRY LOCATION. ELECTROSTATIC DISCHARGE (ESD) CAN HARM THIS PRODUCT. AVOID STATIC DISCHARGE WHILE HANDLING THIS PRODUCT.

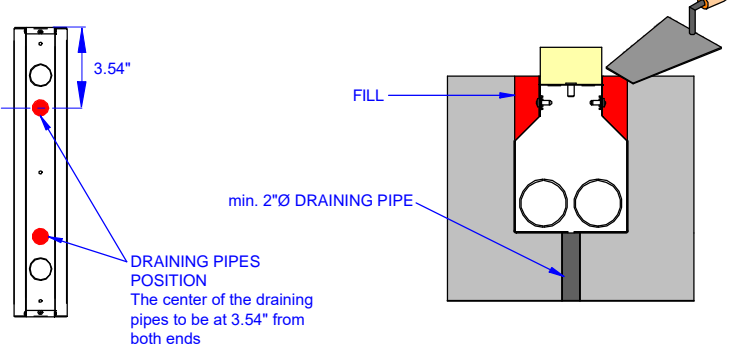
CAUTION:

INTER-LUX IS NOT RESPONSIBLE FOR THE STRUCTURAL INTEGRITY OF THE BUILDING TO SUPPORT THE LUMINAIRE. ADDITIONAL BACKING MAY BE REQUIRED.

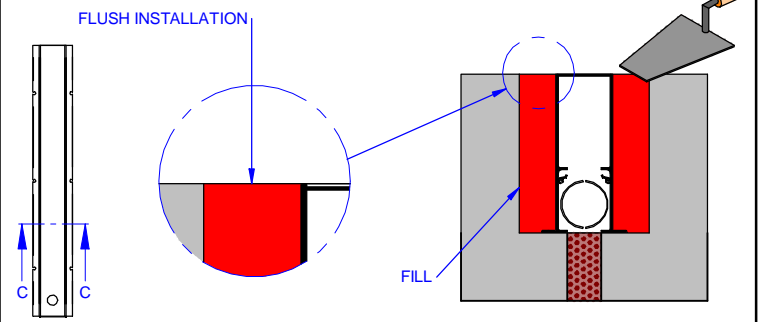
LOCATE AND REVIEW ANY CONSTRUCTION PLANS AND INTER-LUX RECORD DRAWINGS FOR ALL FIXTURE RUNS. IT IS RECOMMENDED TO LOCARE AND LAY OUT ALL COMPONENTS FOR EACH FIXTURE "RUN". A FIXTURE RUN TYPICALLY CONSISTS OF JOINERS, LENGTHS OF HOUSING, AND ENDCAPS. BE SURE TO IDENTIFY ALL CORRECT LENGTHS FOR EACH FIXTURE RUN.

INSTALLATION INSTRUCTIONS**RAF & RSF (Frame versions)****A1. GROUND PREPARATION AND DRAINAGE TEST****RF (Frameless version)****B1. GROUND PREPARATION AND DRAINAGE TEST****A2. OUTERCASING MOUNT****B2. OUTERCASING MOUNT**

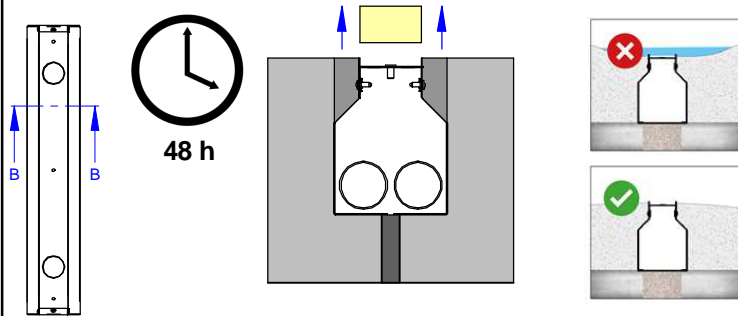
A3. CONCRETE FILLING RAF & RSF (Frame versions)



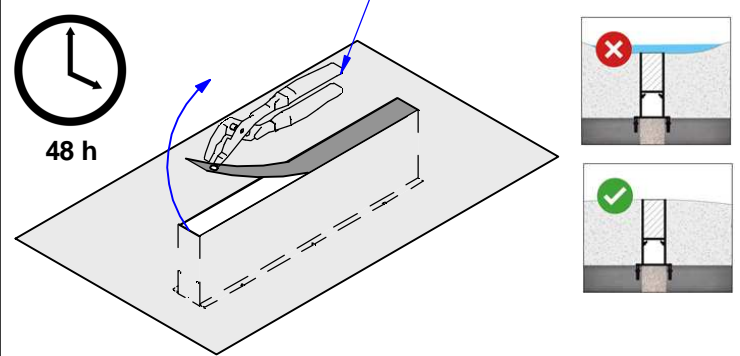
B3. CONCRETE FILLING RF (Frameless version)



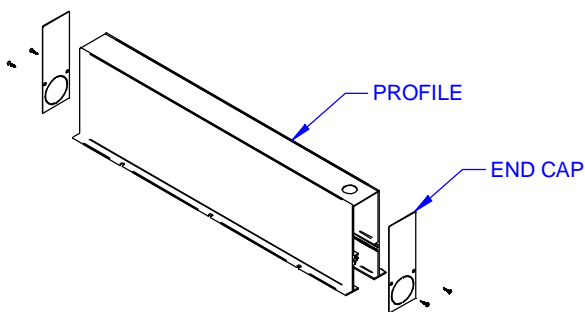
A4. COVER REMOVAL



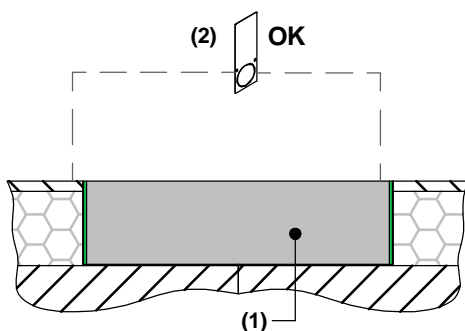
B4. TAB REMOVAL



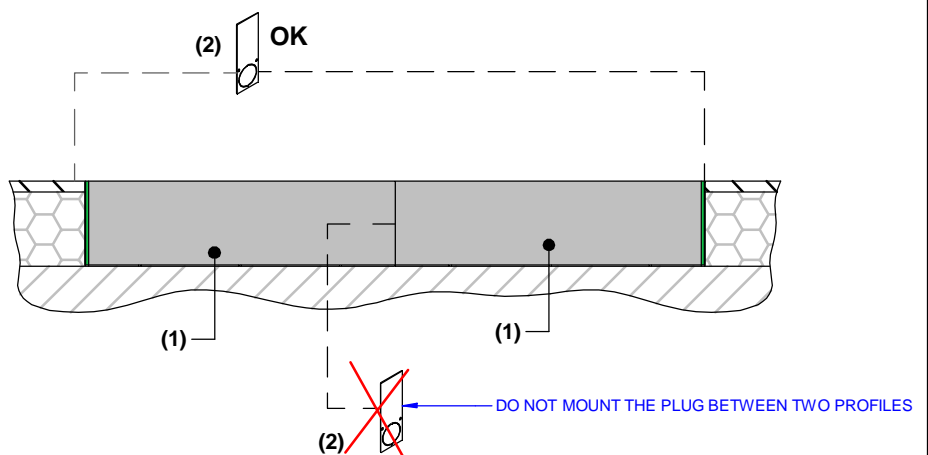
B.5 SINGLE RUN INSTALLATION



SINGLE FIXTURE INSTALLATION



CONTINUOUS RUN INSTALLATION



· MOUNTING INSTRUCTIONS

- Keep all of the instructions for future reference
- Turn off power before installing fixture
- Installation is to be performed by a qualified electrician only
- All installations must conform to the National Electrical Code as well as all local jurisdictional codes and regulations
- Any modification of the luminaire will void any and all written or implied warranties
- The manufacturer accepts no responsibility for damage to persons or property arising through improper use or installation