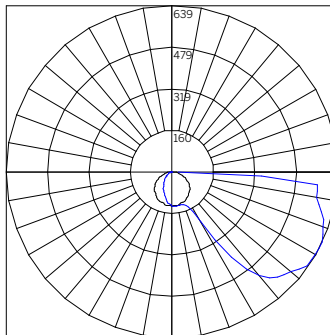


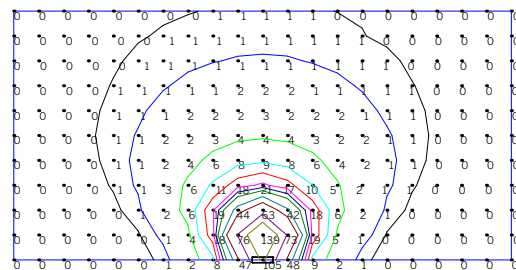
Envelope IP66 Surface Mount Rectangular

EN66-RRWH-ME-...-AS...		
Delivered Lumens - Asymmetric		
Diameter [Wattage]		
67 [7 CV]		
CCT	30-	465
	40-	483
Polar Plot / Cone Of Light Multiplier		
67 [7 CV]		
0.43		



Beam Angle (0-180) = Asymmetric
Beam Angle (90-270) = Asymmetric

ISOILLUMINANCE DIAGRAM - 1W 3000K Asymmetric¹ EN66-SRWH-ME-47-1-CV-40-AS²



Value [Fc]	Color	Value [Fc]	Color	Value [Fc]	Color
0.5	Black	15	Red	40	Teal
1	Blue	20	Magenta	50	Brown
5	Green	25	Dark Blue	75	Purple
10	Cyan	30	Dark Green	100	Olive

- 1 Illuminance values in foot-candles for the fixture part number noted. Illuminance points spaced 1'-0" on center.
- 2 Fixture is mounted 1'-0" above the illuminated surface.