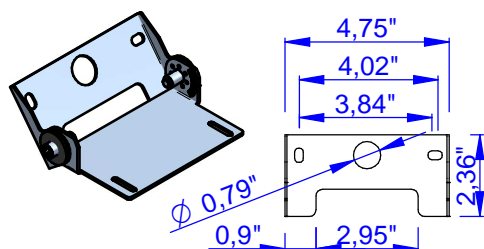
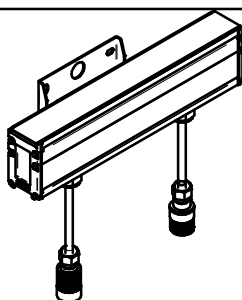
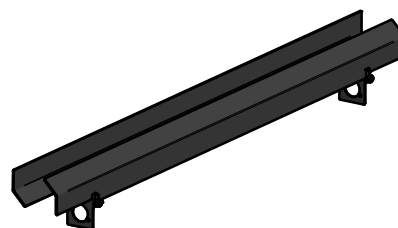


BRACKET

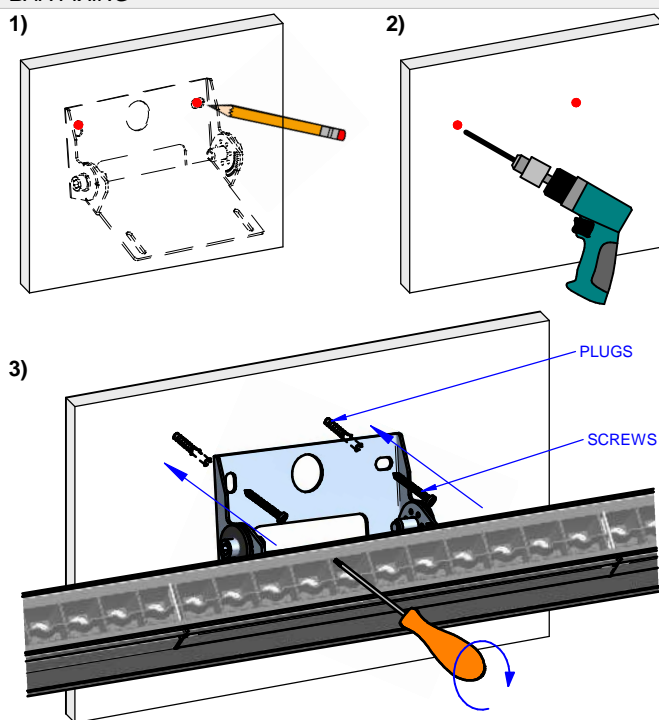


FLAP ACCESSORY

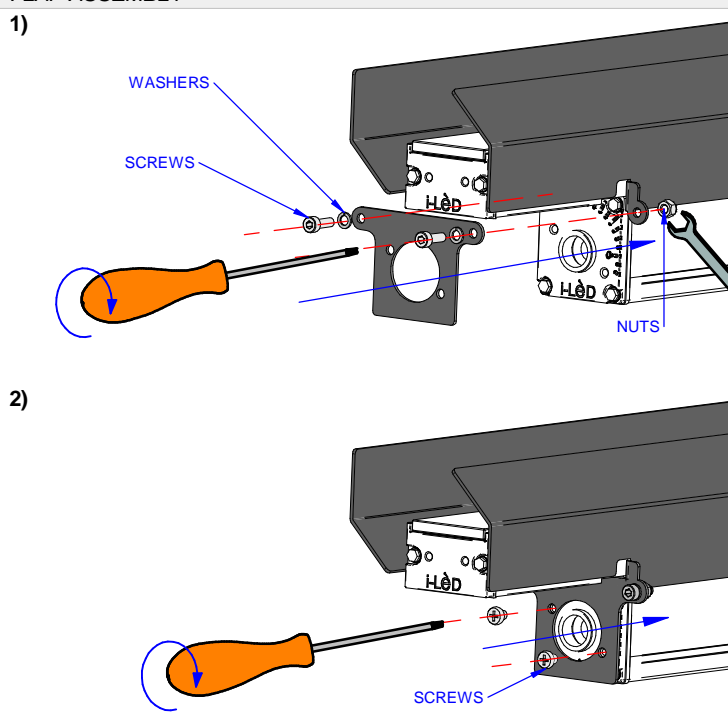


COD.	L (inch)
98675	24,41"
98676	36,22"
98677	48,03"

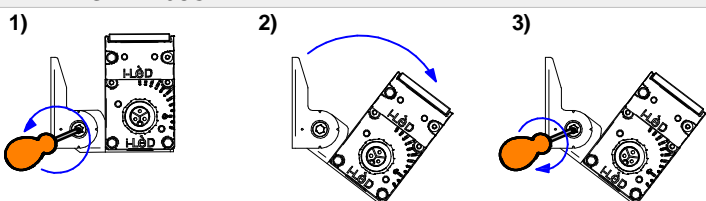
BAR FIXING



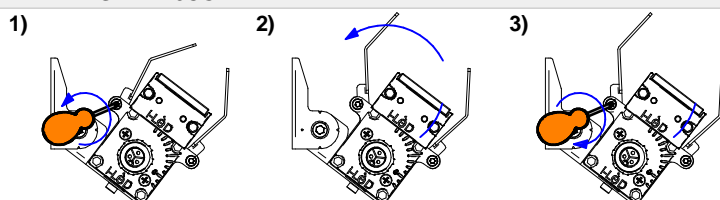
FLAP ASSEMBLY



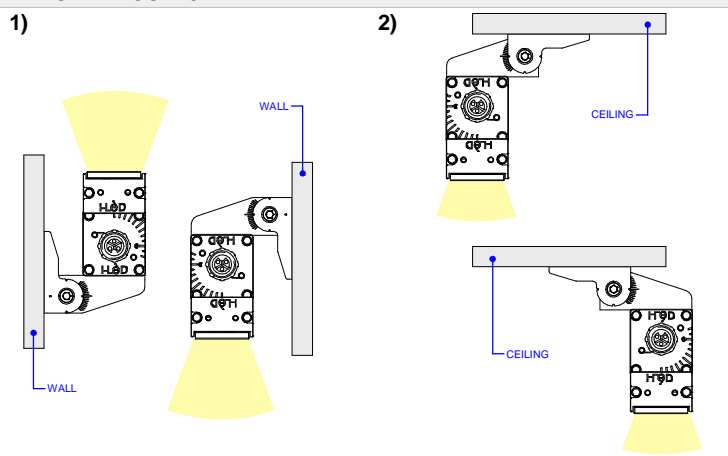
BAR ANGLE ADJUSTMENT



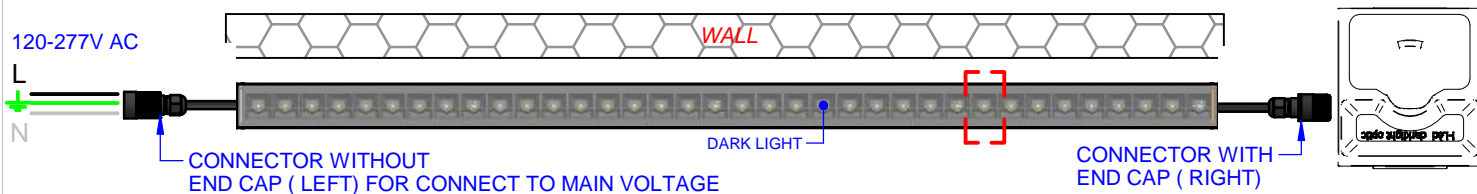
FLAP ANGLE ADJUSTMENT



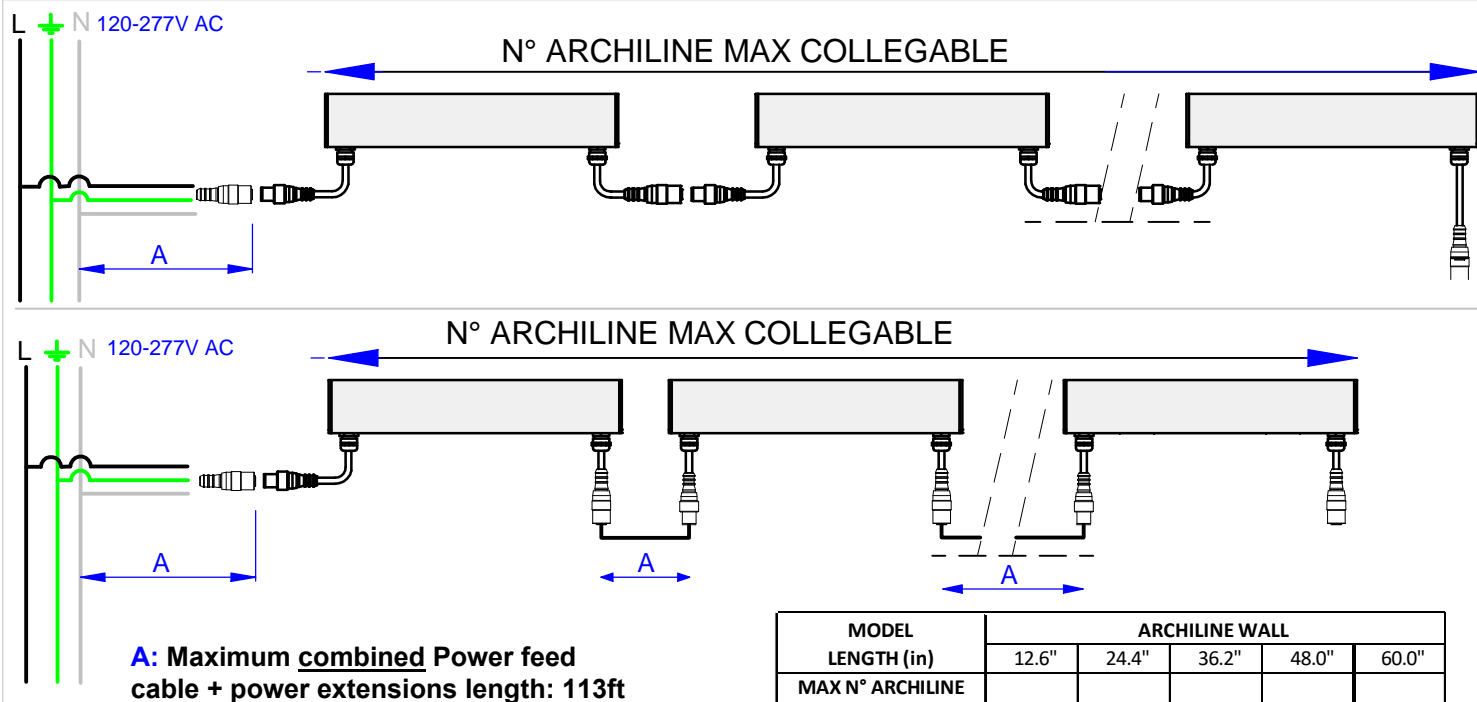
BRACKET POSITION



## BAR POSITIONING FOR DARK LIGHT EFFECT



## Cabling scheme



MODEL LENGTH (in)	ARCHILINE WALL				
	12.6"	24.4"	36.2"	48.0"	60.0"
MAX N° ARCHILINE CONNECTABLE ON A SINGLE RUN @ 120Vac	37	20	13	10	8
MAX N° ARCHILINE CONNECTABLE ON A SINGLE RUN @ 277Vac	74	40	26	20	16
SINGLE RUN MAX LENGHT	80ft @277Vac, 40ft @120Vac NOTE: SINGLE RUN MAX LENGTHS DO NOT INCLUDE EXTENSION CABLES BETWEEN FIXTURES				

THIS PRODUCT MUST BE INSTALLED IN ACCORDANCE WITH THE APPLICABLE INSTALLATION CODE BY A PERSON FAMILIAR WITH THE CONSTRUCTION AND OPERATION OF THE PRODUCT AND THE HAZARDS INVOLVED

## MOUNTING INSTRUCTIONS

READ ALL OF THESE INSTRUCTIONS BEFORE INSTALLING FIXTURES

- Keep all of the instructions for future reference
- Turn off power before installing fixture
- Installation is to be performed by a qualified electrician only
- All installations must conform to the National Electrical Code as well as all local jurisdictional codes and regulations
- Any modification of the luminaire will void any and all written or implied warranties
- The manufacture accepts no responsibility for damage to persons or property arising through improper use or installation

## INSTALLATION SEQUENCE

- Instal the outercasing with the appropriate instructions
- Ensure power is off before connecting the Archiline to the main voltage
- Insert the Archiline into the outercasing following the images
- Fix the Archiline on the outercasing
- Energize
- \* To calculate the maximum extension cable, please contact the tecnical service with the tecnical specifications of the cable used

## WARNING !!! (ARCHILINE\_W MONO WHITE LIGHT)

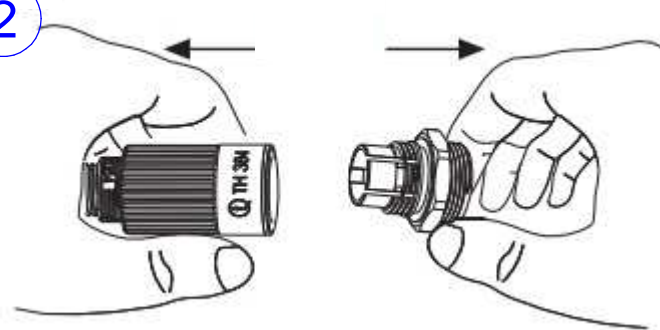
- The light source contained in this luminaire shall only be replaced by the manufacturer or his service agent or a similar qualified person.
- Photobiological risk: unlimited RG1.

# CONNECTORS FOR CABLE REEL: 20 AWG min - 12 max AWG O.D. CABLE 0,275" min - 0,47" max

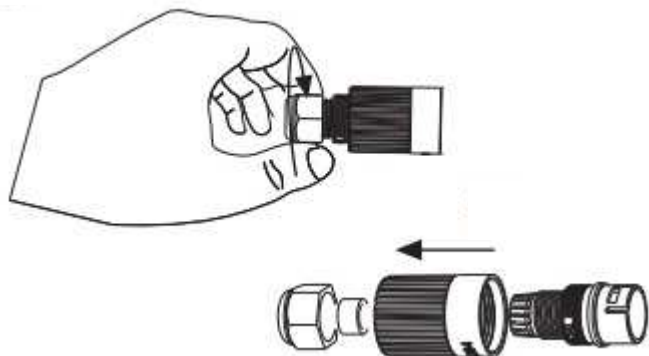
1



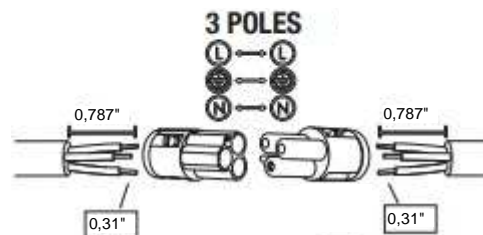
2



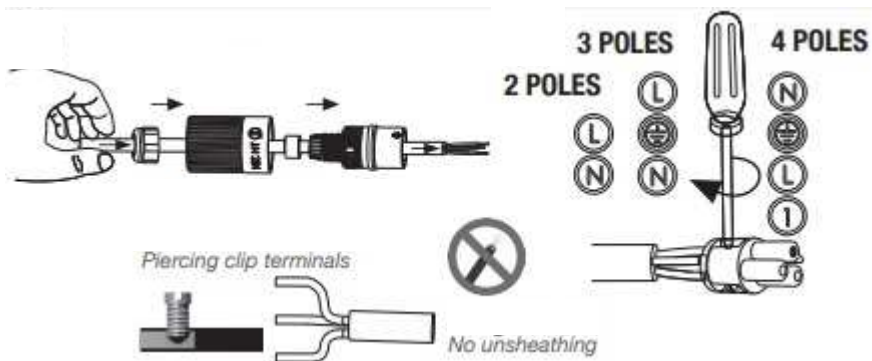
3



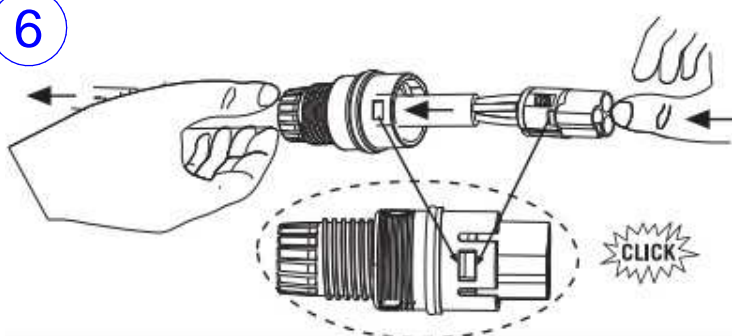
4



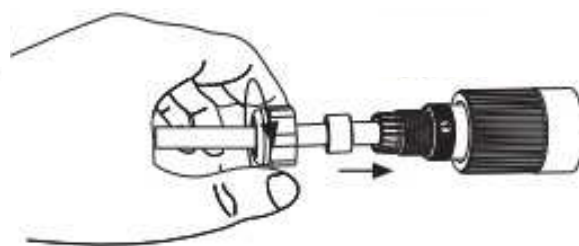
5



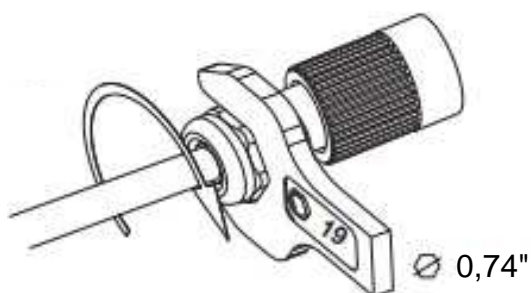
6



7



8



9

