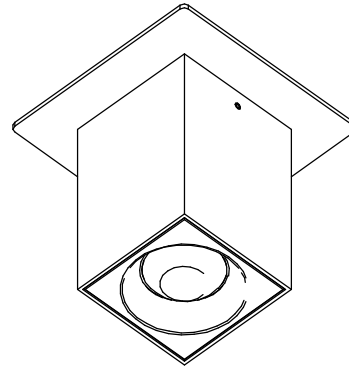
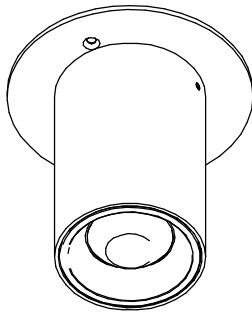
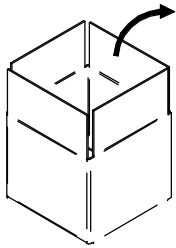


**BATON_Q 7.3W / BATON_R 7.3W****WARNING:**

INSTALL PRODUCT IN ACCORDANCE WITH LOCAL AND NATIONAL ELECTRICAL CODES BY A QUALIFIED ELECTRICIAN

**WARNING:**

FAILURE TO COMPLY WITH THE INSTALLATION INSTRUCTIONS MAY RESULT IN DEATH OR SEVERE INJURY.

**WARNING:**

READ ALL SAFETY INSTRUCTIONS INCLUDED WITH LUMINAIRE BEFORE INSTALLING LUMINAIRE. SAVE INSTRUCTIONS FOR FUTURE USE.

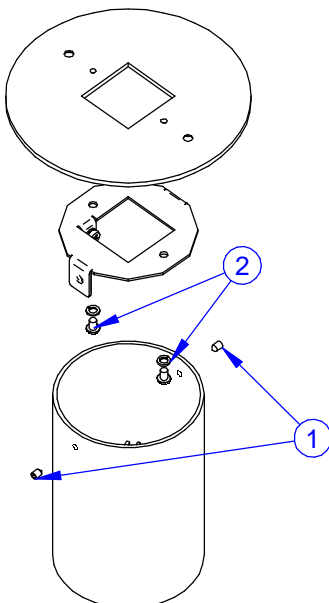
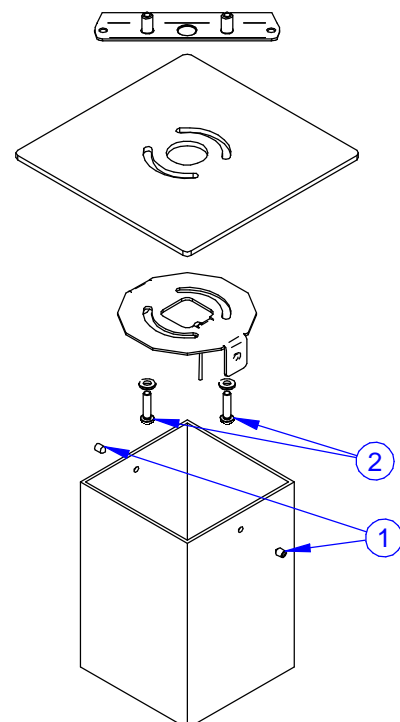
CAUTION:

THIS IS AN ELECTRONIC DEVICE. CARE MUST BE TAKEN DURING STORAGE AND HANDLING. STORE IN A CLEAN, COOL AND DRY LOCATION. ELECTROSTATIC DISCHARGE (ESD) CAN HARM THIS PRODUCT. AVOID STATIC DISCHARGE WHILE HANDLING THIS PRODUCT.

CAUTION:

INTER-LUX IS NOT RESPONSIBLE FOR THE STRUCTURAL INTEGRITY OF THE BUILDING TO SUPPORT THE LUMINAIRE. ADDITIONAL BACKING MAY BE REQUIRED.

LOCATE AND REVIEW ANY CONSTRUCTION PLANS AND INTER-LUX RECORD DRAWINGS FOR ALL FIXTURE RUNS. IT IS RECOMMENDED TO LOCARE AND LAY OUT ALL COMPONENTS FOR EACH FIXTURE "RUN". A FIXTURE RUN TYPICALLY CONSISTS OF JOINERS, LENGTHS OF HOUSING, AND ENDCAPS. BE SURE TO IDENTIFY ALL CORRECT LENGTHS FOR EACH FIXTURE RUN.

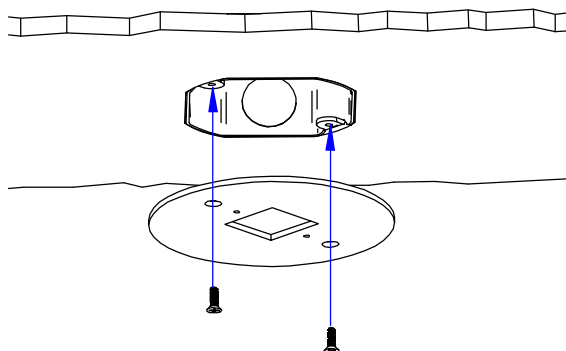
INSTALLATION INSTRUCTIONS**PRELIMINARY OPERATIONS****A.1****C.1****B.1****D.1**

1. Loosen the grub screw and remove the lamp from the bracket.
2. Remove the screws+washers to unmount the bracket from the backplate.

1. Loosen the grub screw and remove the lamp from the bracket.
2. Remove the screws+washers to unmount the brackets from the backplate.

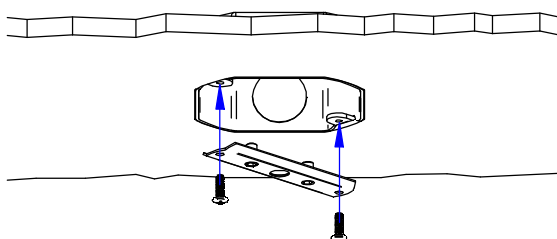
INSTALLATION SEQUENCE WITH OPTIONAL BACKPLATE (INCLUDED)

A.2



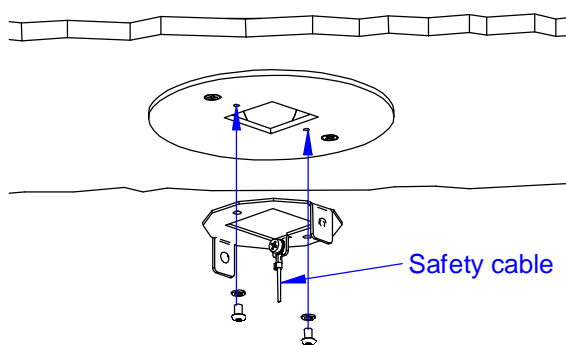
Mount the backplate on the junction box (not included) using the included screws (phillips head).

B.2



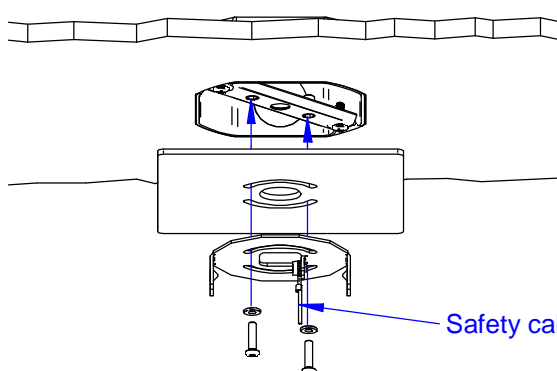
Mount the bracket on the junction box (not included) using the included screws (phillips head).

A.3



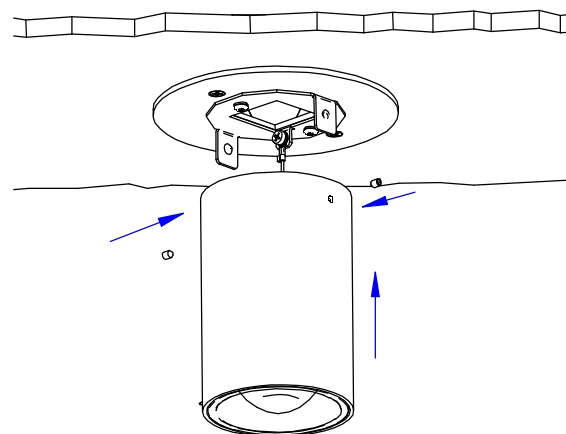
Mount the fixture bracket on the backplate using the included screws + washers (7/64 hex key).
If necessary, disconnect the safety cable to facilitate assembly.

B.3



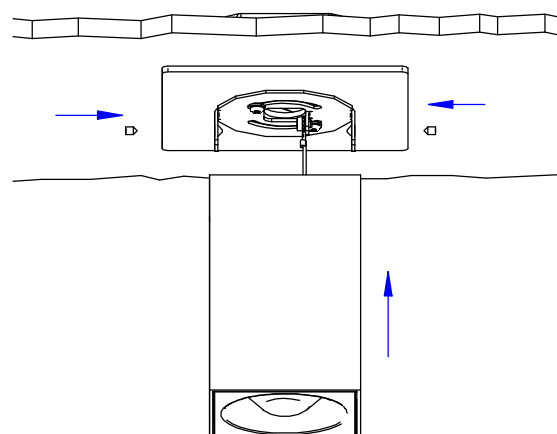
Mount the fixture bracket and the backplate on the jbox bracket using the included screws + washers (7/64 hex key). Adjust the backplate and fixture bracket alignment before tightening the screws.
If necessary, disconnect the safety cable to facilitate assembly.

A.4



Reassemble the safety cable if previously removed.
Now with the lamp suspended from the safety cable it is possible to make the wirings as shown in the wiring diagram on the next page.
Once done, insert the lamp body on the bracket and tighten the grub screws.

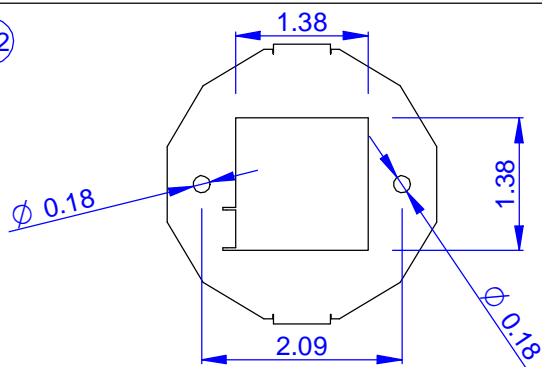
B.4



Reassemble the safety cable if previously removed.
Now with the lamp suspended from the safety cable it is possible to make the wirings as shown in the wiring diagram on the next page.
Once done, insert the lamp body on the bracket and tighten the grub screws.

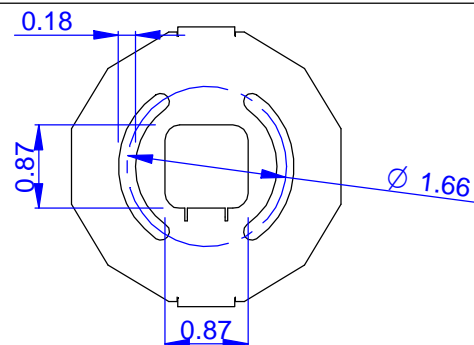
INSTALLATION SEQUENCE WITHOUT OPTIONAL BACKPLATE (INCLUDED)

C.2

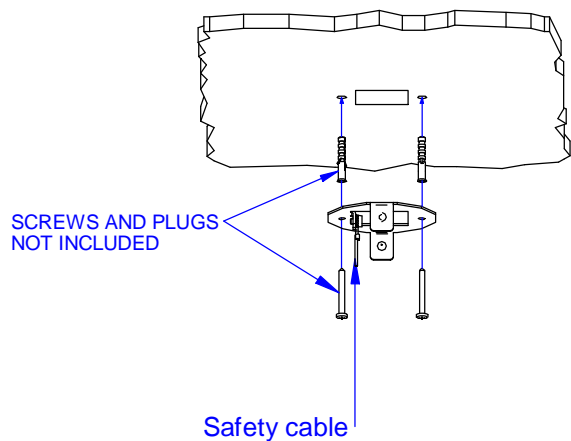


Once the C.1 point is done, cut the opening for the cable passage and drill the holes in the ceiling to mount the bracket with screws and rawplugs (not included)

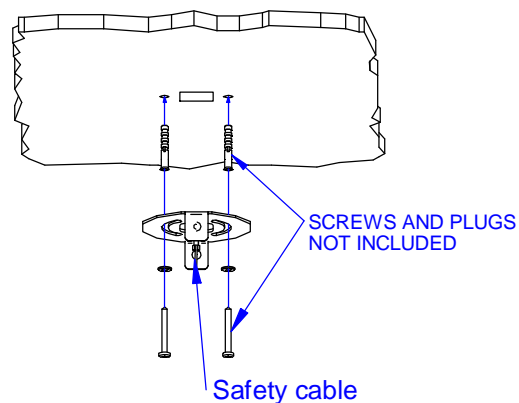
D.2



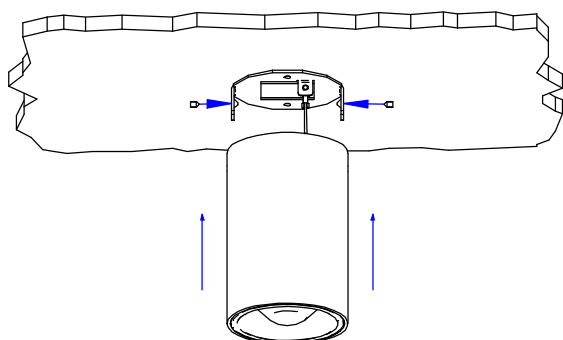
Once the D.1 point is done, cut the opening for the cable passage and drill the holes in the ceiling to mount the bracket with screws and rawplugs (not included)



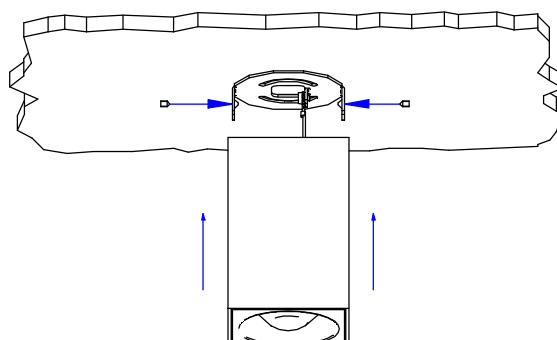
Mount the fixture bracket on the ceiling. Choose the correct plugs and screws according to your ceiling type.
If necessary, disconnect the safety cable to facilitate assembly.



Mount the fixture bracket on the ceiling. Choose the correct plugs and screws according to your ceiling type.
If necessary, disconnect the safety cable to facilitate assembly.



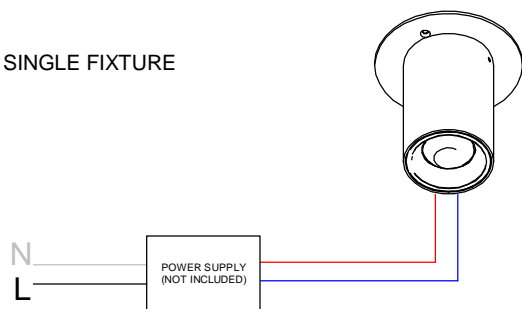
Reassemble the safety cable if previously removed.
Now with the lamp suspended from the safety cable it is possible to make the wirings as shown in the wiring diagram on the next page.
Once done, insert the lamp body on the bracket and tighten the grub screws.



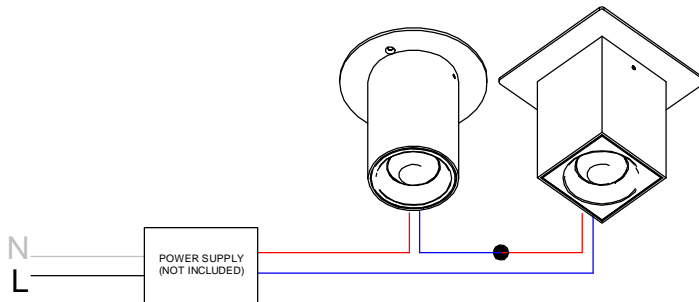
Reassemble the safety cable if previously removed.
Now with the lamp suspended from the safety cable it is possible to make the wirings as shown in the wiring diagram on the next page.
Once done, insert the lamp body on the bracket and tighten the grub screws.

WIRING DIAGRAM

SINGLE FIXTURE



MULTIPLE FIXTURES WIRED IN SERIES (Constant Current)



THIS PRODUCT MUST BE INSTALLED IN ACCORDANCE WITH THE APPLICABLE INSTALLATION CODE BY A PERSON FAMILIAR WITH THE CONSTRUCTION AND OPERATION OF THE PRODUCT AND THE HAZARDS INVOLVED

MOUNTING INSTRUCTIONS

READ ALL OF THESE INSTRUCTIONS BEFORE INSTALLING FIXTURES

- CAUTION: USE ONLY WITH CLASS 2 POWER UNIT
- Keep all of the instructions for future reference
- Turn off power before installing fixture
- Installation is to be performed by a qualified electrician only
- All installations must conform to the National Electrical Code as well as all local jurisdictional codes and regulations
- Any modification of the luminaire will void any and all written or implied warranties
- The manufacture accepts no responsibility for damage to persons or property arising through improper use or installation

INSTALLATION SEQUENCE

- Mount remote driver in accessible well ventilated space
- Ensure power is off before connecting driver to line voltage
- Install the fixture following the steps indicated in this instruction sheet
- WARNING: Be sure secondary wiring is connected to driver BEFORE energizing to avoid LED failure
- Energize

Secondary Cable Colours	Pole
Red wire	+
Blue wire	-