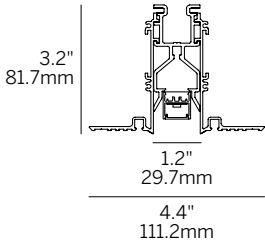
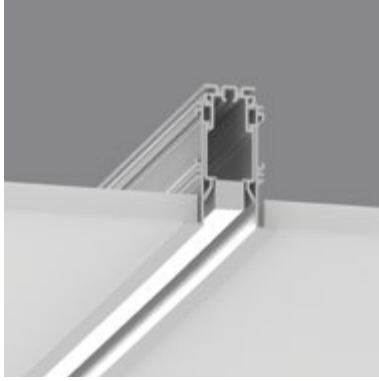


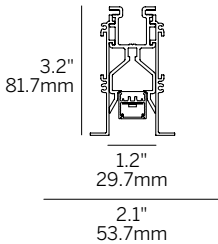
# 20 Linear Recessed Flush



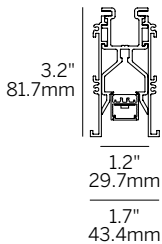
inter•lux



Recessed Plaster Trim (RPT)

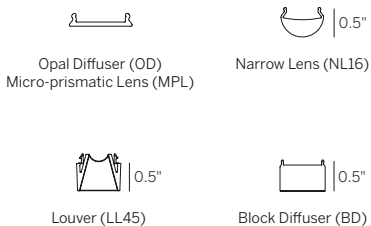


Recessed Bezel Trim (RBT)  
Recessed Grid Trim (RGT9/RGT15)



Recessed Return Trim (RRT)

## Lenses/Accessories



## Ordering Information

Model	Fixation	Pattern	Length	Power <sup>2</sup>	CRI/CCT <sup>3</sup>	Driver <sup>4</sup>	Lens	Finish	Options
WG-20LRF	RPT RBT RRT RGT9 RGT15	S P <sup>1</sup> PZ <sup>1</sup>	A A x B A x B x C A x B x A x B	L M H	927 930 935 940 WD RGBW	X S D010 DPH L3DAE L3D0E EL96 DMX	OD (std) MPL NL16 LL45B LL45W LL45S BDO <sup>5</sup> BDC <sup>5</sup>	W (std) B S F	EM WL <sup>6</sup>

## Luminaire

- Recessed fixture with fully recessed light for continuous mounting to any desired length (1/4" increments), as well as standard grid multiples.
- Multiple lens options for diffuse, high efficiency and luminous effect.
- Remote driver options (required). Field replaceable LED boards.
- Lengths and angles factory cut to exact field dimension.
- Supplied with 4' class 2 plenum rated feed cable per fixture lengths.
- 90+ CRI, 3 steps MacAdam.
- L70 (TM21 Projected 85C) Static White 60,000 hours, RGBW 50,000 hours, WD 36,000 hours.
- ETL and ETL-C for dry and damp location.

## Fixation

- RPT = Recessed plaster trim
- RBT = Recessed bezel trim
- RRT = Recessed return trim
- RGT9 = Recessed grid trim 9/16"
- RGT15 = Recessed grid trim 15/16"

## Pattern

- S = Straight run
- P = Standard patterns 2, 3 or 4 sided with 90° corners on the same plane<sup>1</sup>
- PZ = Non-standard patterns and/or corners other than 90° on multiple planes, consult factory<sup>1</sup>

## Length

- A, B, C = specify inches to the nearest 0.25" (i.e. 72.25") For patterns specify each length (i.e. 2 sided: A x B = 72.25" x 48"; 3 sided: A x B x C; 4 sided: A x B x A x B)
- For 2 and 4 foot fixtures to fit ceiling grids specify 24" and 48" lengths

## Power<sup>2</sup>

- L = 3W/ft low power (WD 2.7 W/ft) (24V)
- M = 6W/ft mid power (WD 5.5 W/ft) (24V) (RGBW - 7.6 W/ft)
- H = 10W/ft high power (WD 8 W/ft) (24V)

## Cutout Dimensions

RPT - 2.25" width / length + 1/4"  
RBT - 1.75" width / length + 1/4"  
RRT - 1.75" width / length + 1/4"

## CRI/CCT (90+ CRI)<sup>3</sup>

- 927 = 2700K
- 930 = 3000K
- 935 = 3500K
- 940 = 4000K
- WD = Warm Dimming 1800 - 3000K
- RGBW = 3000K White (M power only)

## Driver (remote)<sup>4</sup>

- X = No driver, ordered separately
- S = Standard driver 120-277V
- D010 = Osram, 10%, 0-10V dimming, 120-277V
- DPH = Phase Dimming, 1% dimming, 120V only
- L3DAE = Lutron Hi-lume 1% EcoSystem, 120-277V
- L3D0E = Lutron Hi-lume Premier 0.1% EcoSystem, 120-277V
- EL96 = Osram / EldoLED, 24V, 0.1% 0-10V Dimming
- DMX = Osram / EldoLED, 24V, 0.1% DMX Dimming

## Lens

- OD = Satin opal diffuser (standard)
- MPL = Micro-prismatic lens
- NL16 = Linear narrow lens, 16°
- LL45B = Linear louver black
- LL45W = Linear louver white
- LL45S = Linear louver satin
- BDO = Block diffuser opal<sup>5</sup>
- BDC = Block diffuser clear<sup>5</sup>

## Finish

- W = White, 15% gloss, RAL 9010 (standard)
- B = Black, 15% gloss, RAL 9005
- S = Silver, 15% gloss, RAL 9006
- F = Custom finished trim, specify RAL

## Options

- EM = Emergency LED driver (remote only)
- WL = Wet Location Under Canopy / Cover<sup>6</sup>

- 1 See pattern spec sheet.
- 2 Wattage shown is for LED boards only, system wattage varies depending on driver selected.
- 3 See photometric data sheet for delivered lumens.
- 4 Remote power supply required. See power supply page for details.
- 5 Butt seam (lens) when in continuous run, straight runs only.
- 6 Wet Location option available for OD / MPL lenses and recessed / surface ceiling applications only.

whitegoods

410 381 1497 inter-lux.com answers@inter-lux.com  
Inter-lux reserves the right to make technical changes without notice.

Patent: 10190738 (930-20267-REV.E) 1

