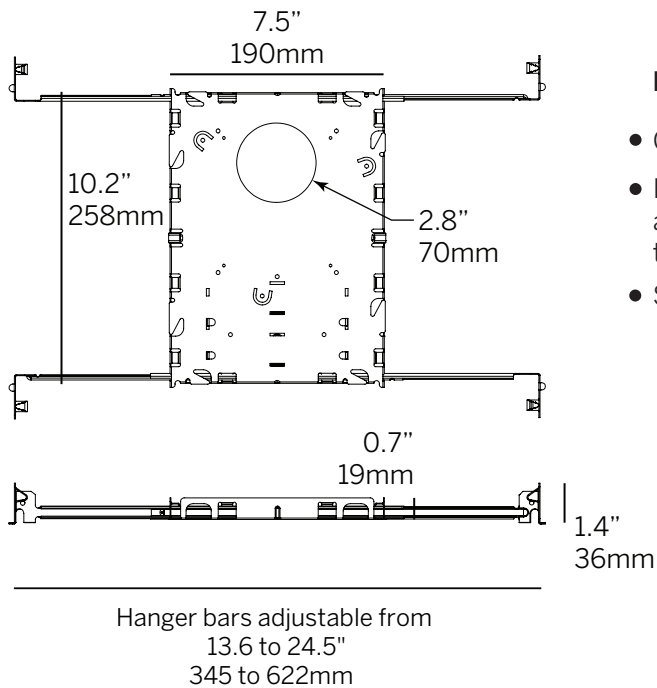
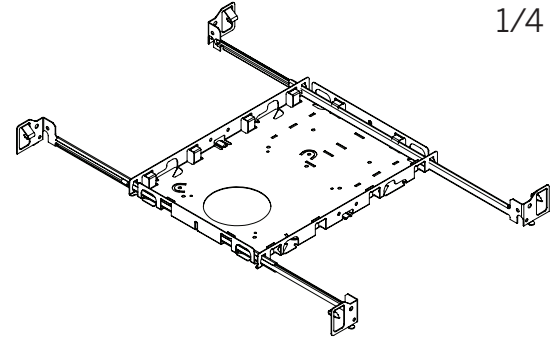


2.4" General Downlights

Housing Information

Landing Pan

1/4



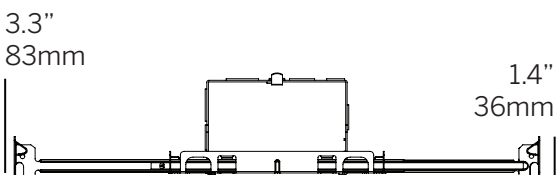
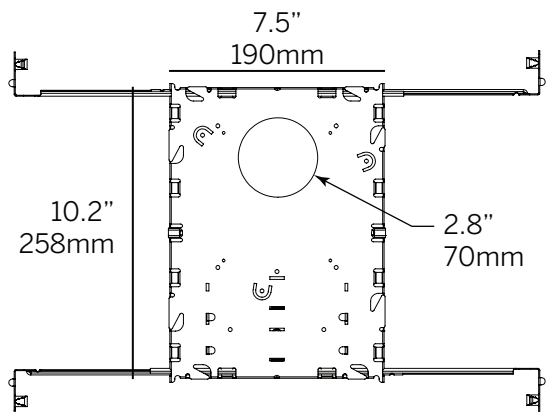
Landing Pan

- Galvanized steel constructions
- Integral junction box and driver accessible through ceiling aperture.
- Supplied with hanger bars that adjust between 13.6" and 24.5"

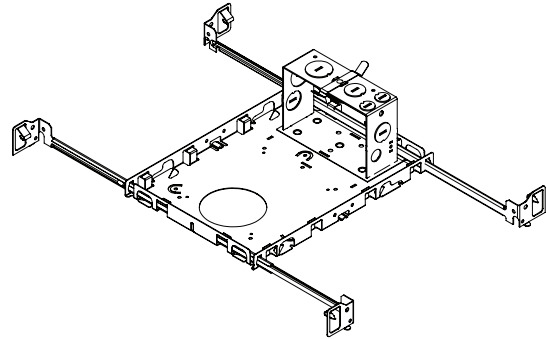
Drivers

- S010 = Magtech 10% 0-10V dimming, 120-277V
- RS010 = eldoLED 1% 0-10V dimming, 120-277V
- RD010 = eldoLED 0.1% 0-10V dimming, 120-277V
- SPH = Triac/ELV 3% dimming, 120V only
- PEQ0 = Lutron Hi-lume Premier 0.1% EcoSystem, 120-277V
- EM= Bodine 6W Emergency Driver, 120-277V
- EM= Iota 7W or 12W Emergency Driver, 120-277V (Remote only)

Refer to the chart on page 4 for more information on Housing/Driver compatibility.



Hanger bars adjustable from
13.6 to 24.5"
345 to 622mm



New Construction

- New Construction Housing for accessible ceilings only
- Galvanized steel constructions
- Integral junction box and driver accessible from adjacent accessible ceiling
- Supplied with hanger bars that adjust between 13.6" and 24.5"

Drivers

- S010 = Magtech 10% 0-10V dimming, 120-277V
- RS010 = eldoLED 1% 0-10V dimming, 120-277V
- RD010 = eldoLED 0.1% 0-10V dimming, 120-277V
- SPH = Triac/ELV 3% dimming, 120V *only*
- PEQ0 = Lutron Hi-lume Premier 0.1% EcoSystem, 120-277V
- EM= Bodine 6W Emergency Driver, 120-277V
- EM= Iota 7W or 12W Emergency Driver, 120-277V (Remote only)

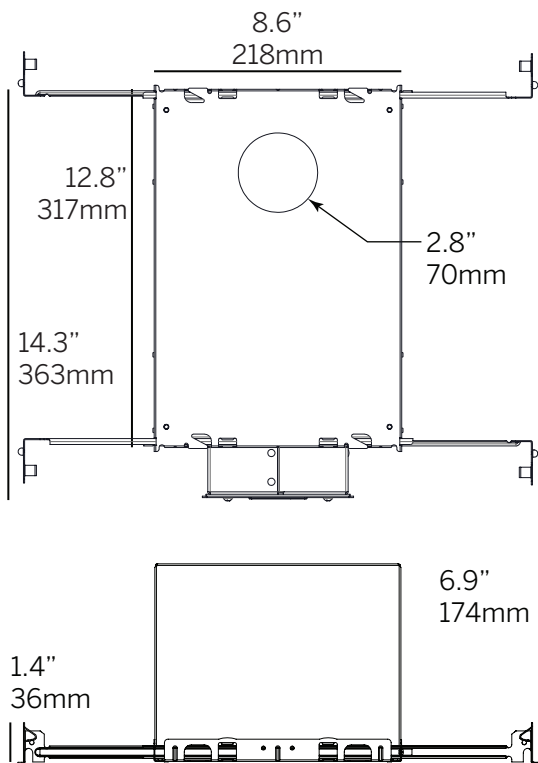
Refer to the chart on page 4 for more information on Housing/Driver compatibility.

2.4" General Downlights

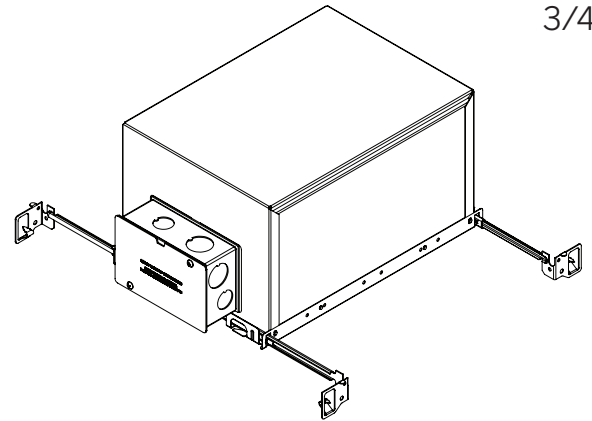
Housing Information

Insulated Ceiling Chicago Plenum

3/4



Hanger bars adjustable from
13.6 to 24.5"
345 to 622mm



IC/CP

- IC/CP housing for accessible ceilings only
- Galvanized steel construction
- Fully caulked corners
- Gasketed mating plaster frame surfaces and of integral junction box
- Integral junction box for wire splice from external power source (optional)
- Supplied with hanger bars that adjust between 13.6" and 24.5"
- Anti-vibration embossing
- Designed for an airflow rate not to exceed 2 CFM

Drivers

- S010 = Magtech 10% 0-10V dimming, 120-277V
- RS010 = eldoLED 1% 0-10V dimming, 120-277V
- RD010 = eldoLED 0.1% 0-10V dimming, 120-277V
- SPH = Triac/ELV 3% dimming, 120V *only*
- PEQ0 = Lutron Hi-lume Premier 0.1% EcoSystem, 120-277V
- EM= Bodine 6W Emergency Driver, 120-277V
- EM= Iota 7W or 12W Emergency Driver, 120-277V (Remote only)

Refer to the chart on page 4 for more information on Housing/Driver compatability.

2.4 General Downlights

Landing Pan New Construction Insulated Ceiling Chicago Plenum

Housing Information

4/4

Driver	Driver Wattage	Control Protocol	Dim Level	Fixtures/Driver			Housing (Integral)	Housing (Remote)
				Low 5.7W @350mA	Medium 8.4W @500mA	High 12W @700mA		
S010	20W	0-10V	10%	–	–	1	LP - NC - IC - CP	LP - IC - CP
RS010	22W	0-10V	1%	1 – 2	1 – 2	1	–	LP - IC - CP
RS010	50W	0-10V	1%	1 – 3	1 – 3	1 – 3	–	LP - IC - CP
RS010	100W	0-10V	1%	1 – 6	1 – 6	1 – 6	–	LP - IC - CP
RD010	22W	0-10V	0.1%	1 – 2	1 – 2	1	–	LP - IC - CP
RD010	50W	0-10V	0.1%	1 – 6	1 – 4	1 – 4	–	LP - IC - CP
RD010	100W	0-10V	0.1%	1 – 12	1 – 8	1 – 8	–	LP - IC - CP
SPH	20W	Triac/ELV	3%	1	1	1	LP - NC - IC - CP	LP - IC - CP
PEQ0	20W	EcoSystem	0.1%	1	1	1	LP - NC - IC - CP	LP - IC - CP
EM	6W	Emergency	-	-	1	-	LP - NC - IC - CP	LP - IC - CP
EM	7W, 12W	Emergency	-	-	1	-	–	LP - IC - CP

NOTES: An “integral” driver must be installed in an accessible ceiling. Specify remote driver for all non-accessible ceiling types.

Prefix R = Remote