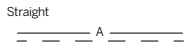
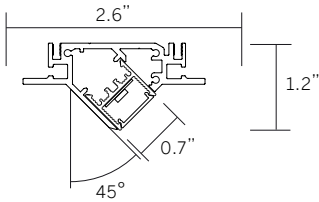


20 Linear Bezel Semi-Recessed Wallwash LED Specifications



Ordering Information									
Model	Type	Length	LED ²	Color ³	Voltage	Power	Diffuser	Mount	Options
WG-SRB20LWW	S							HC	
WG-SRB20LWW	S	A	L M	827 830 835 840 927 930 935 940	UNV 120	S D010 D3W DES DFPN	OD (std) SD	HC	C4 (std) C10 C20 C30 DL



Luminaire

- Continuous, evenly illuminated snap-in lens without visible LED pattern.
- Standard Opal Diffuser for even illumination and no LED appearance. Satin Diffuser for high efficiency and minimal LED appearance.
- Field replaceable LED boards.
- 80+ CRI, 3 steps MacAdam.
- Lengths factory cut to exact field dimensions.
- Powder coat painted white - RAL 9010.
- 4' class 2 plenum rated feed cable standard (Options – "C4").

Type

- S = Straight run

Length

- A = specify feet & inches to the nearest 0.25" (i.e. 6' 5.5")

LED²

- L = Low Power (3.2W/ft)
- M = Mid Power (6.4W/ft)

Color / Lumens³

- 80+ CRI minimum (Low/Mid)
- 827 = 2700K (316/534 lm/ft)
- 830 = 3000K (343/579 lm/ft)
- 835 = 3500K (343/579 lm/ft)
- 840 = 4000K (355/601 lm/ft)
- For 90+ CRI specify 927, 930, etc.

Voltage

- UNV = 120 - 277V
- 120 = 120V (DFPN only)

Power Supply (remote)⁴

- S = standard driver 120-277V
- D010 = 10%, 0-10V dimming, 120-277V
- D3W = Lutron, 1%, 3-wire dimming, 120-277V
- DES = Lutron, 1%, EcoSystem E1/E2 digital dimming, 120-277V
- DFPN = Lutron 1% forward phase with neutral, 120V only

Diffuser

- OD = Opal diffuser (standard)
- SD = Satin diffuser

Mounting

- HC = Hard ceiling

Options

- C4 = 4' tray cable (plenum rated) (standard)
- C10 = 10' tray cable (plenum rated)
- C20 = 20' tray cable (plenum rated)
- C30 = 30' tray cable (plenum rated)
- Contact factory for emergency lighting options
- DL = Damp location
- To specify multiple options select the appropriate grouped codes from the dropdown e.g. C10-DL

- 1 Wattage shown does not include power supplies/drivers.
- 2 Delivered lumens with satin diffuser shown. Lumens for CRI 90(+), are about 16% lower compared to standard CRI 80(+).
- 3 Remote power supply required. See power supply page for details.

20 Linear Bezel Semi-Recessed Wallwash LED Dimensions

