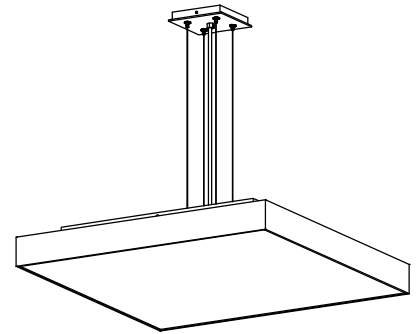
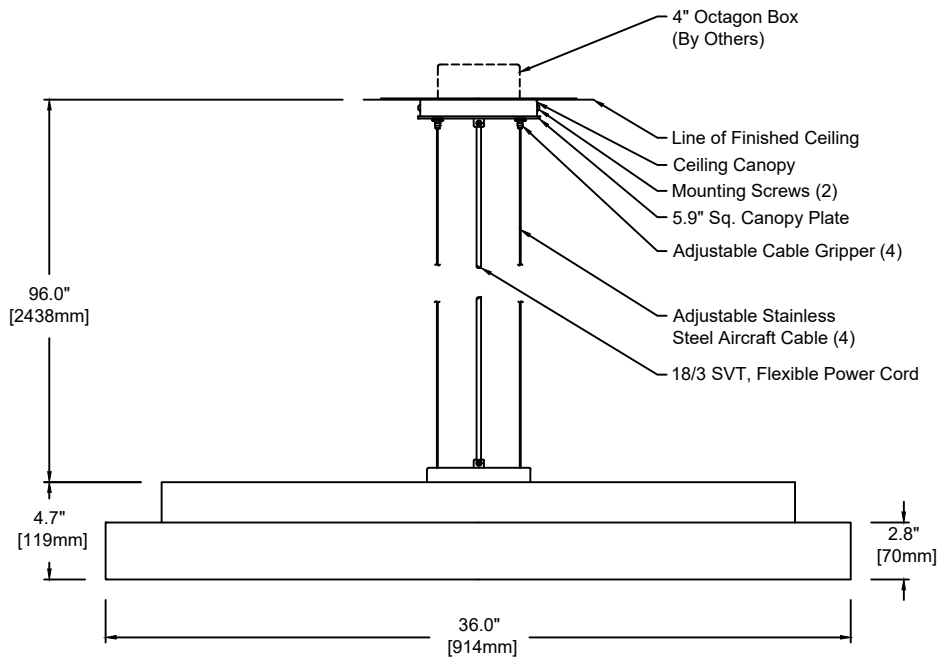


# Step

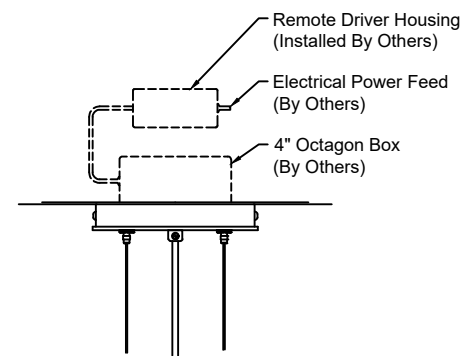
## TECHNICAL SHEET

### Canopy finish:

- Canopy finish matches housing
- For Clear Anodized Aluminum housing, canopy finish will be Painted Anodized Aluminum



PERSPECTIVE VIEW

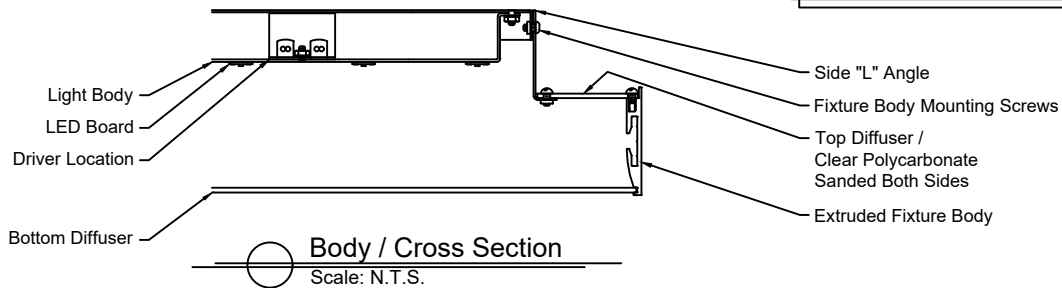


Remote Driver Detail:

Scale: N.T.S.

### Note - Remote Driver:

L3D0E - Lutron Hi-Lume  
Premier 0.1% EcoSystem - Only



Fixture Weight : 32 lbs

1540	P	36	L	830	U	S	SW	16	CC
Model	Type	Size	Wattage	Color Temp	Voltage	Control	Diffuser	Finish	Options
<div><div><div>P - Pendant</div><div>36"</div><div>L</div><div>827 - 2,700K 830 - 3,000K 835 - 3,500K 840 - 4,000K</div><div>1 - 120 VAC only U - 120/277 V</div><div>S D010 DFPN L3DAE L3D0E</div><div>SW - Satin Opal Acrylic</div><div>16 - Clear Anodized Aluminum 21 - Painted White - RAL 9010 Matte 22 - Painted Custom Color</div><div>CC - Clear Insulated Cable (Standard) WC - White Cable BC - Black Cable</div></div></div>									

### Wattage and Control

Control (Integral):  
S - Non-Dim  
D010 - 0-10V 10%  
DFPN - Lutron Forward Phase 1%, 120VAC  
L3DAE - Lutron Hi-Lume 1% EcoSystem

Control (Remote 24V):  
L3D0E - Lutron Hi-Lume Premier 0.1% EcoSystem

Wattage "L" - 77 Watt  
2,700K - 10,267 lm  
3,000K - 10,267 lm  
3,500K - 10,677 lm  
4,000K - 10,883 lm

Technical Data:  
Form - linear, Operating voltage: 24VDC  
Color rendering index Ra min: 82 CRI, Available in 90 CRI  
Viewing angle: 110°  
Lifetime - L70: 60,000h  
Working temperature: -20°C to 60°C (-4°F to 140°F)

Remote Driver:  
Max. wiring distance / Load  
Lutron  
Wire Gauge  
#18AWG 25'  
#16AWG 40'  
#14AWG 60'

inter•lux

inter-lux.com

All specifications subject to change without notice © 2019

almlighting.com

