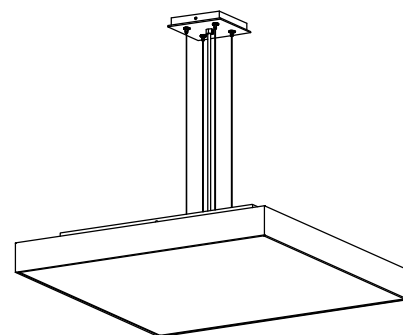
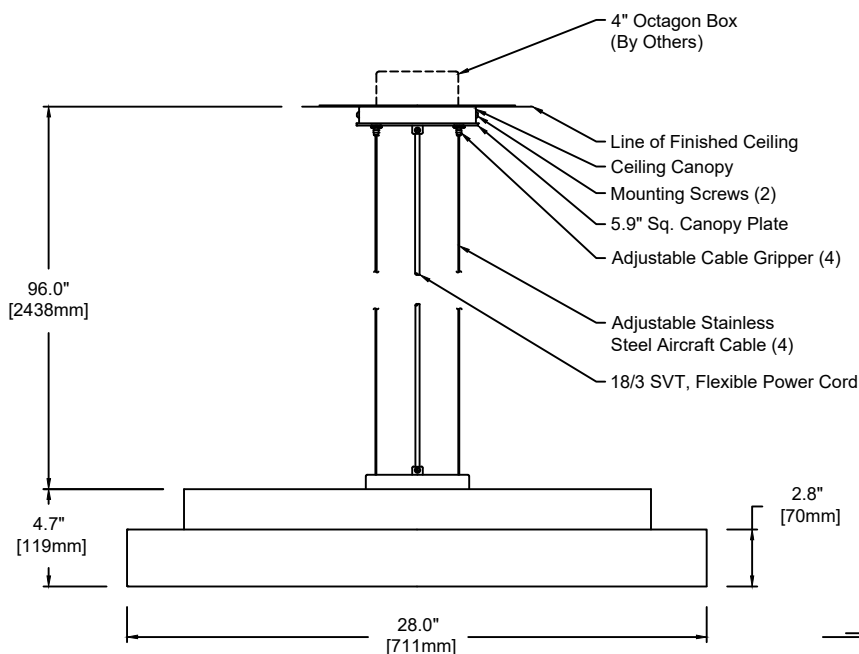


Step

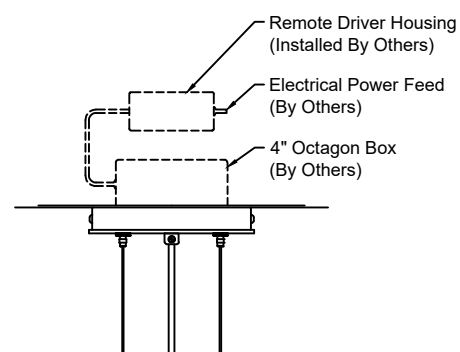
TECHNICAL SHEET

Canopy finish:

- Canopy finish matches housing
- For Clear Anodized Aluminum housing, canopy finish will be Painted Anodized Aluminum

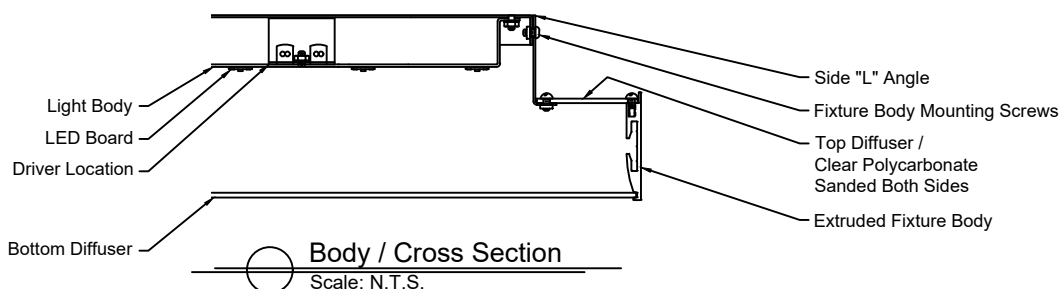


PERSPECTIVE VIEW



Remote Driver Detail:
Scale: N.T.S.

Note - Remote Driver:
L3D0E - Lutron Hi-Lume
Premier 0.1% EcoSystem - Only



Fixture Weight : 22 lbs

1540	P	28	L	830	U	S	SW	16	CC
Model	Type	Size	Wattage	Color Temp	Voltage	Control	Diffuser	Finish	Options
Wattage and Control	P - Pendant	28"	L	827 - 2,700K	1 - 120 VAC only	S	SW - Satin Opal Acrylic	16 - Clear Anodized Aluminum	CC - Clear Insulated
				830 - 3,000K	U - 120/277 V	D010		21 - Painted White - RAL 9010 Matte	Cable (Standard)
				835 - 3,500K		DFPN		22 - Painted Custom Color	WC - White Cable
				840 - 4,000K		L3DAE			BC - Black Cable
						L3D0E			

Wattage and Control

Control (Integral):
S - Non-Dim
D010 - 0-10V 10%
DFPN - Lutron Forward Phase 1%, 120VAC
L3DAE - Lutron Hi-Lume 1% EcoSystem

Wattage "L" - 40 Watt
2,700K - 5,333 lm
3,000K - 5,333 lm
3,500K - 5,547 lm
4,000K - 5,653 lm

Technical Data:
Form - linear, Operating voltage: 24VDC
Color rendering index Ra min: 82 CRI, Available in 90 CRI
Viewing angle: 110°
Lifetime - L70: 60,000h
Working temperature: -20°C to 60°C (-4°F to 140°F)

Remote Driver:
Max. wiring distance / Load
Lutron ≤96W
Wire Gauge
#18AWG 25'
#16AWG 40'
#14AWG 60'

Control (Remote 24V):
L3D0E - Lutron Hi-Lume Premier 0.1% EcoSystem

inter•lux

inter-lux.com

All specifications subject to change without notice © 2019

almlighting.com

