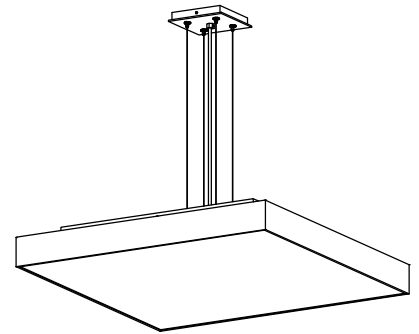
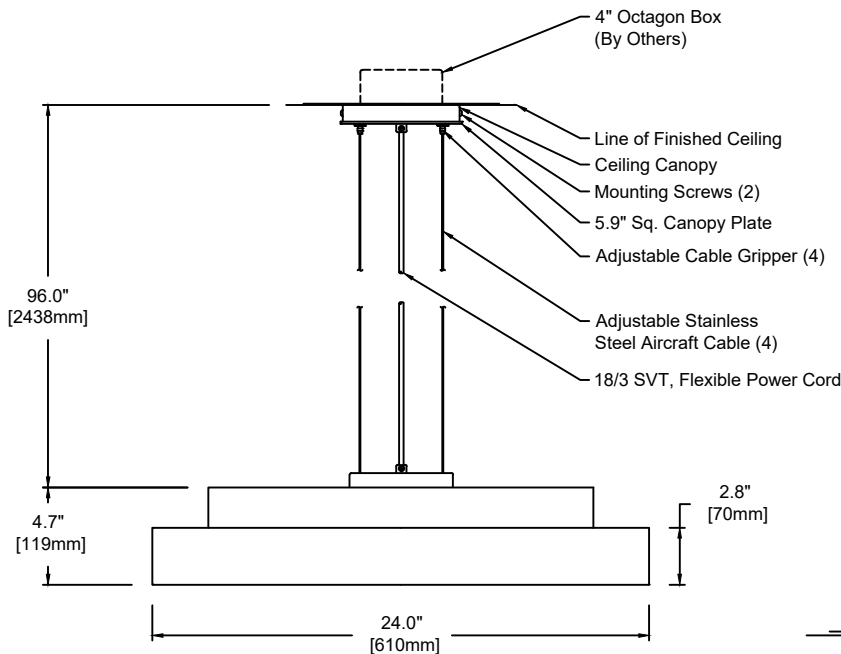


Step

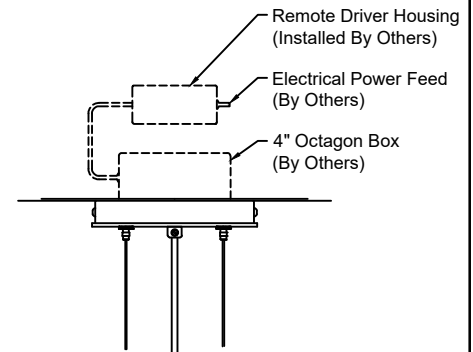
TECHNICAL SHEET

Canopy finish:

- Canopy finish matches housing
- For Clear Anodized Aluminum housing, canopy finish will be Painted Anodized Aluminum

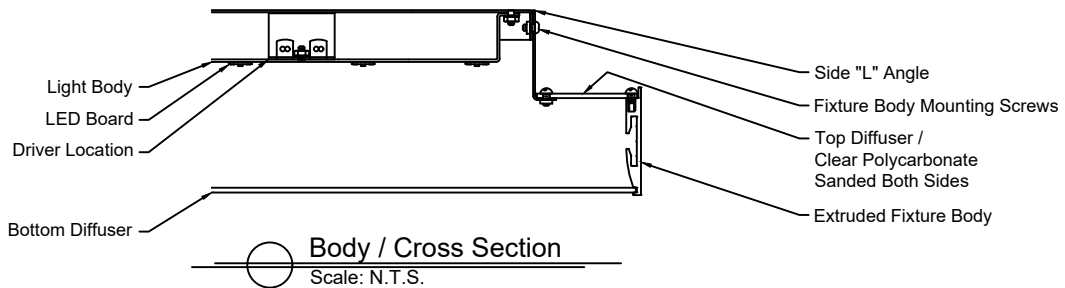


PERSPECTIVE VIEW



Remote Driver Detail:
Scale: N.T.S.

Note - Remote Driver:
L3D0E - Lutron Hi-Lume
Premier 0.1% EcoSystem - Only



Body / Cross Section
Scale: N.T.S.

Fixture Weight : 17 lbs

1540	P	24	L	830	U	S	SW	16	CC			
Model	Type	Size	Wattage	Color Temp	Voltage	Control	Diffuser	Finish	Options			
P - Pendant			24"	L	827 - 2,700K 830 - 3,000K 835 - 3,500K 840 - 4,000K	1 - 120 VAC only U - 120/277 V	S D010 DFPN L3DAE L3D0E	SW - Satin Opal Acrylic	16 - Clear Anodized Aluminum 21 - Painted White - RAL 9010 Matte 22 - Painted Custom Color	CC - Clear Insulated Cable (Standard) WC - White Cable BC - Black Cable		
Wattage and Control												
Control (Integral): S - Non-Dim D010 - 0-10V 10% DFPN - Lutron Forward Phase 1%, 120VAC L3DAE - Lutron Hi-Lume 1% EcoSystem				Wattage "L" - 28 Watt 2,700K - 3,733 lm 3,000K - 3,733 lm 3,500K - 3,883 lm 4,000K - 3,957 lm				Technical Data: Form - linear, Operating voltage: 24VDC Color rendering index Ra min: 82 CRI, Available in 90 CRI Viewing angle: 110° Lifetime - L70: 60,000h Working temperature: -20°C to 60°C (-4°F to 140°F)			Remote Driver: Max. wiring distance / Load Lutron Wire Gauge #18AWG 25' #16AWG 40' #14AWG 60'	
Control (Remote 24V): L3D0E - Lutron Hi-Lume Premier 0.1% EcoSystem												

inter•lux

inter-lux.com

All specifications subject to change without notice © 2019

almlighting.com

