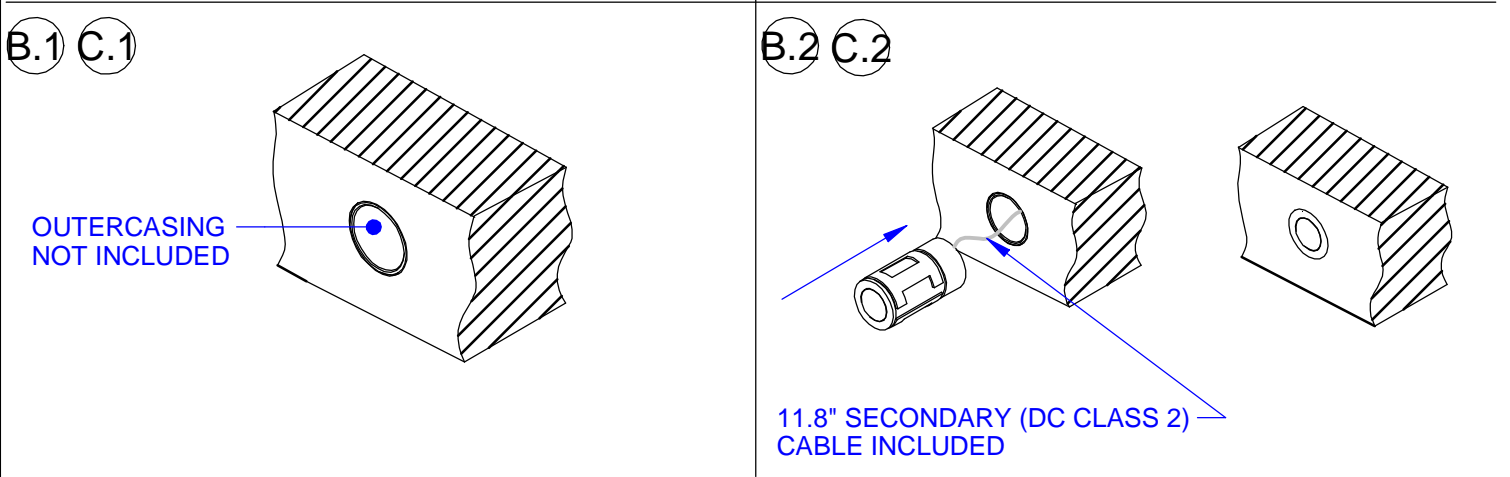
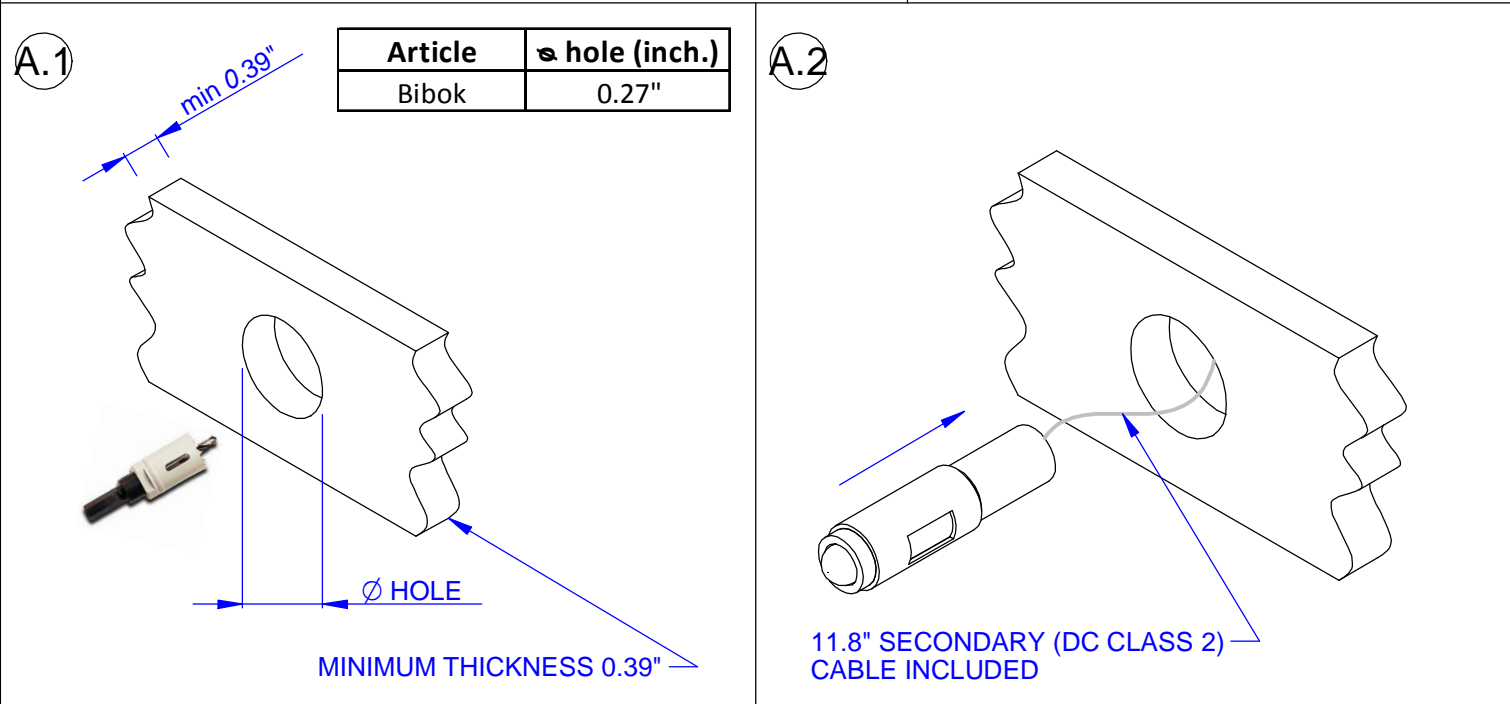


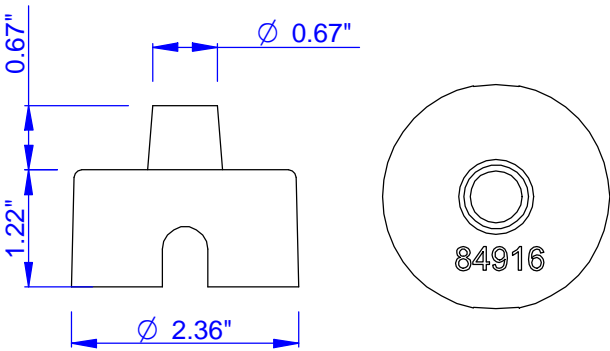
<p> <b>WARNING:</b></p> <p>INSTALL PRODUCT IN ACCORDANCE WITH LOCAL AND NATIONAL ELECTRICAL CODES BY A QUALIFIED ELECTRICIAN</p>	<p> <b>WARNING:</b></p> <p>FAILURE TO COMPLY WITH THE INSTALLATION INSTRUCTIONS MAY RESULT IN DEATH OR SEVERE INJURY.</p>	<p> <b>WARNING:</b></p> <p>READ ALL SAFETY INSTRUCTIONS INCLUDED WITH LUMINAIRE BEFORE INSTALLING LUMINAIRE. SAVE INSTRUCTIONS FOR FUTURE USE.</p>
--	---	--

<p><b>CAUTION:</b></p> <p>THIS IS AN ELECTRONIC DEVICE. CARE MUST BE TAKEN DURING STORAGE AND HANDLING. STORE IN A CLEAN, COOL AND DRY LOCATION. ELECTROSTATIC DISCHARGE (ESD) CAN HARM THIS PRODUCT. AVOID STATIC DISCHARGE WHILE HANDLING THIS PRODUCT.</p>	<p><b>CAUTION:</b></p> <p>INTER-LUX IS NOT RESPONSIBLE FOR THE STRUCTURAL INTEGRITY OF THE BUILDING TO SUPPORT THE LUMINAIRE. ADDITIONAL BACKING MAY BE REQUIRED.</p>
---	---

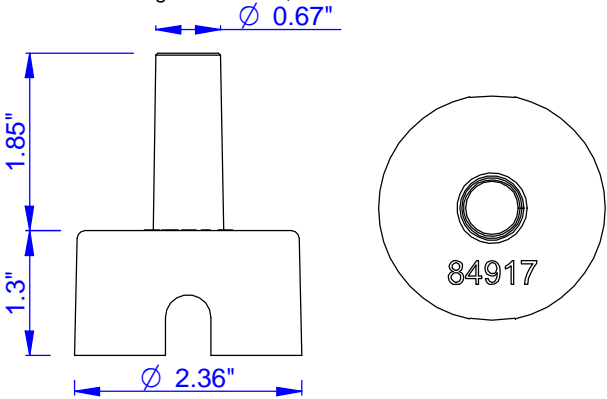
LOCATE AND REVIEW ANY CONTRUCTION PLANS AND INTER-LUX RECORD DRAWINGS FOR ALL FIXTURE RUNS. IT IS RECOMMENDED TO LOCARE AND LAY OUT ALL COMPONENTS FOR EACH FIXTURE "RUN". A FIXTURE RUN TYPICALLY CONSISTS OF JOINERS, LENGHTS OF HOUSING, AND ENDCAPS. BE SURE TO IDENTIFY ALL CORRECT LENGHTS FOR EACH FIXTURE RUN.



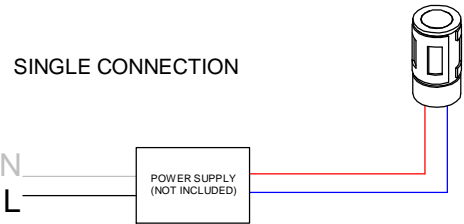
cod. E84916 outercasing for BIBOK 1W



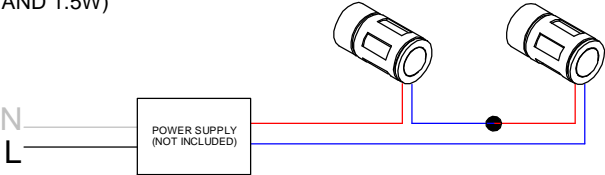
cod. E84917 outercasing for BIBOK 1,5W



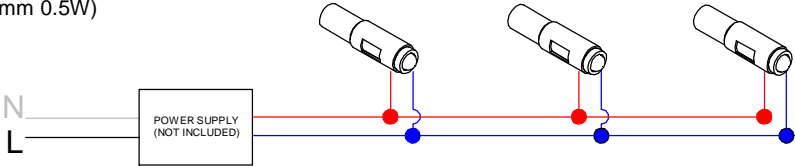
WIRING DIAGRAM



MULTIPLE SERIAL CONNECTION (ONLY FOR BIBOK 1W AND 1.5W)



MULTIPLE PARALLEL CONNECTION (ONLY FOR BIBOK 5mm 0.5W)



THIS PRODUCT MUST BE INSTALLED IN ACCORDANCE WITH THE APPLICABLE INSTALLATION CODE BY A PERSON FAMILIAR WITH THE CONSTRUCTION AND OPERATION OF THE PRODUCT AND THE HAZARDS INVOLVED

MOUNTING INSTRUCTIONS

READ ALL OF THESE INSTRUCTIONS BEFORE INSTALLING FIXTURES

- CAUTION: USE ONLY WITH CLASS 2 POWER UNIT
- Keep all of the instructions for future reference
- Turn off power before installing fixture
- Installation is to be performed by a qualified electrician only
- All installations must conform to the National Electrical Code as well as all local jurisdictional codes and regulations
- Any modification of the luminaire will void any and all written or implied warranties
- The manufacture accepts no responsibility for damage to persons or property arising through improper use or installation

INSTALLATION SEQUENCE BIBOK 5MM

- Mount remote CV 24V driver in accessible well ventilated space
- Ensure power is off before connecting driver to line voltage
- Cut correct size opening in ceiling or wall [A.1]
- Insert the article into the hole [A.2]
- Connect secondary wiring to fixture wiring
- If there are more Bibok 5MM, connected in parallel
- WARNING - Be sure secondary wiring is connected to driver BEFORE energizing to avoid LED failure
- Energize

INSTALLATION SEQUENCE BIBOK 1W - BIBOK 1,5W

- Mount CC remote driver in accessible well ventilated space
- Ensure power is off before connecting driver to line voltage
- Install the outercasing in ceiling or wall [B.1 - C.1]
- Insert the article into the outercasing [B.2 - C.2]
- Connect secondary wiring to fixture wiring
- If there are more Bibok 1W or Bibok 1,5W, connect them in serie
- WARNING - Be sure secondary wiring is connected to driver BEFORE energizing to avoid LED failure
- Energize

Secondary Cable Colours	Pole
Red wire	+
Blue wire	-